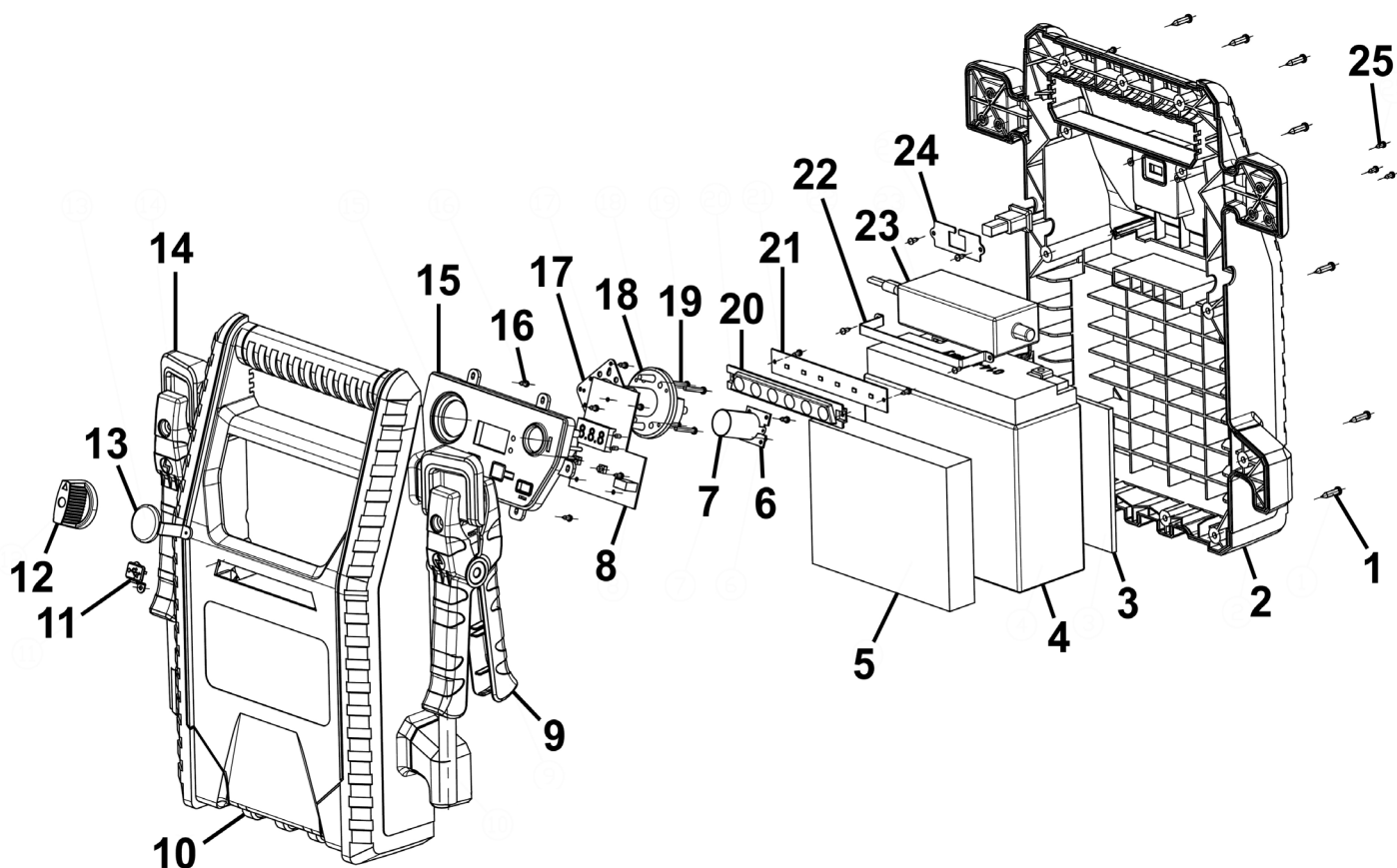


Parts Information:
Premier 12V RoadStart® Jump Starter
2200A
Model No: PRS2200



Item	Part No.	Description	Qty
1	PRS4400-01	Pan Head Tapping Screw ST4.2 x 19	13
2	PRS4400-02	Rear Cover	1
3	PRS4400-03	Backing Foam (170x125x5mm)	1
4	PRS4400-04	Battery 12V 22AH	1
5	PRS2200-05	Protection Foam	1
6	PRS4400-19	Cigarette Lighter Backing Plate	1
7	PRS4400-18	Cigarette Lighter Socket	1
8	PRS4400-07	Main PCB Board	1
9	PRS2200-09	Negative Cable and Clamp Assembly	1
10	PRS2200-10	Front Cover	1
11	PRS4400-10	USB Protective Cover	1
12	PRS2200-12	Conversion Switch Knob	1
13	PRS4400-12	Cigarette Lighter Protective Cover	1

Item	Part No.	Description	Qty
14	PRS2200-14	Positive Cable & Clamp Assembly	1
15	PRS4400-14	Front Panel	1
16	PRS4400-16	Self-Tapping Screw ST3 x 8	19
17	PRS4400-15	Front Plate for Conversion Switch	1
18	PRS2200-18	Conversion Switch 1500A	1
19	PRS2200-19	Pan Head Screw M4 x 25	4
20	PRS4400-06	Protective Panel	1
21	PRS4400-05	LED Lighting Panel	1
22	PRS4400-20	Support Bar	1
23	PRS4400-22	AC Charger 13.8V 3A	1
24	PRS4400-21	Pressure Plate	1
25	PRS4400-23	Self-Tapping Countersunk Screw ST2.9 x 9.5	6

NOTE: It is our policy to continually improve products and as such we reserve the right to alter data, specifications and component parts without prior notice. There may be alternative versions of this product, please contact us should you require this information.

IMPORTANT: No liability is accepted for incorrect use of product. Spare parts must be fitted by a competent person

WARRANTY: Guarantee is 12 months from purchase date, proof of which will be required for any claim.