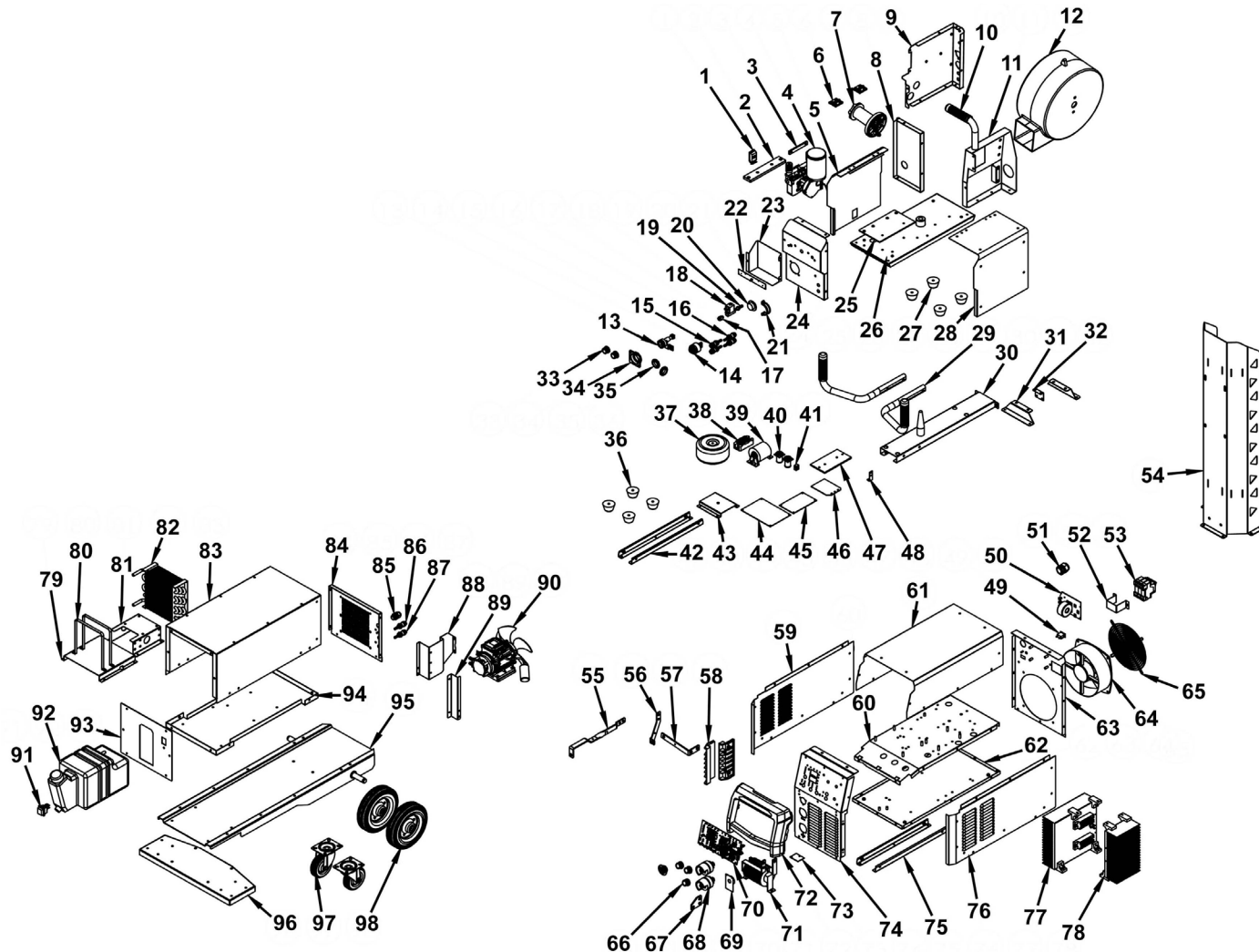




Parts Information:
500A Professional Gas/Gasless MIG/MMA/TIG Inverter Welder With
Portable Wire Feeder & Water Cooler 415V 3ph
Model No: POWERMIG500Wi



NOTE: It is our policy to continually improve products and as such we reserve the right to alter data, specifications and component parts without prior notice.

There may be alternative versions of this product, please contact us should you require this information.

IMPORTANT: No liability is accepted for incorrect use of product. Spare parts must be fitted by a competent person

WARRANTY: Guarantee is 12 months from purchase date, proof of which will be required for any claim.

Sealey Group, Kempson Way, Suffolk Business Park, Bury St Edmunds, Suffolk. IP32 7AR



01284 757500



sales@sealey.co.uk



www.sealey.co.uk



TM

Parts Information:
**500A Professional Gas/Gasless MIG/
 MMA/TIG Inverter Welder With Portable
 Wire Feeder & Water Cooler 415V 3ph
 Model No: POWERMIG500Wi**

Item	Part No.	Description	Qty
1	POWERMIG500Wi-01	Door Latch (for Wire Feed Unit)	1
2	POWERMIG500Wi-02	Brace Insulator	1
3	POWERMIG500Wi-03	Brace Strip	1
4	POWERMIG500Wi-04	Wire Feed Motor	1
5	POWERMIG500Wi-05	Side Panel, Left Side	1
6	POWERMIG500Wi-06	Door Hinge (for Wire Feed Unit)	2
7	POWERMIG500Wi-07	Wire Spool Holder	1
8	POWERMIG500Wi-08	Rear Panel (for Wire Feed Unit)	1
9	POWERMIG500Wi-09	Middle Panel (for Wire Feed Unit)	1
10	POWERMIG500Wi-10	Handle Grip	3
11	POWERMIG500Wi-11	Spool Holder Bracket	1
12	POWERMIG500Wi-12	Wire Feed Cover	1
13	POWERMIG500Wi-13	Euro Torch Connector	1
14	POWERMIG500Wi-14	Dinse Socket Connector	1
15	POWERMIG500Wi-15	Connection Socket (Red - for Wire Feed Unit)	2
16	POWERMIG500Wi-16	Connection Socket (Blue - for Wire Feed Unit)	2
17	POWERMIG500Wi-17	Gas Connector	1
18	POWERMIG500Wi-18	Solenoid Valve	1
19	POWERMIG500Wi-19	Air Inlet Connector	1
20	POWERMIG500Wi-20	Quick Socket	2
21	POWERMIG500Wi-21	U-Clamp	1
22	POWERMIG500Wi-22	Control Panel PCB (for Wire Feed Unit)	1
23	POWERMIG500Wi-23	Control Panel PCB Cover	1
24	POWERMIG500Wi-24	Front Panel (for Wire Feed Unit)	1
25	POWERMIG500Wi-25	Insulating Plate (for Wire Feed Unit)	1
26	POWERMIG500Wi-26	Bottom Panel (for Wire Feed Unit)	1
27	POWERMIG500Wi-27	Rubber Foot (for Wire Feed Unit)	4
28	POWERMIG500Wi-28	Side Panel, Right Side (for Wire Feed Unit)	1
29	POWERMIG500Wi-29	Side Handle (for Wire Feed Unit)	2
30	POWERMIG500Wi-30	Fixed Beam (for Wire Feed Unit)	1
31	POWERMIG500Wi-31	Support Bracket (for Wire Feed Unit)	2
32	POWERMIG500Wi-32	PCB Bracket	1
33	POWERMIG500Wi-33	Potentiometer Knob (for Wire Feed Unit)	2
34	POWERMIG500Wi-34	Insulating Surround (for Wire Feed Unit)	1

Item	Part No.	Description	Qty
35	POWERMIG500Wi-35	Bushing Ring (for Wire Feed Unit)	2
36	POWERMIG500Wi-36	Rubber Foot (for Main Unit)	4
37	POWERMIG500Wi-37	Transformer	1
38	POWERMIG500Wi-38	Bridge Rectifier	1
39	POWERMIG500Wi-39	Capacitance	1
40	POWERMIG500Wi-40	Bushing Ring	2
41	POWERMIG500Wi-41	PCB Base	1
42	POWERMIG500Wi-42	Water Tank Bracket	2
43	POWERMIG500Wi-43	Transformer Bracket	1
44	POWERMIG500Wi-44	Wire Feed Panel PCB	1
45	POWERMIG500Wi-45	Drive PCB	1
46	POWERMIG500Wi-46	Protection PCB	1
47	POWERMIG500Wi-47	Bridge Radiator	1
48	POWERMIG500Wi-48	Bracket (L-Shape)	1
49	POWERMIG500Wi-49	Switch Socket	1
50	POWERMIG500Wi-50	EMC PCB	1
51	POWERMIG500Wi-51	Cable Grip	1
52	POWERMIG500Wi-52	Circuit Breaker Bracket	1
53	POWERMIG500Wi-53	Circuit Breaker	1
54	POWERMIG500Wi-54	Upright Bar	1
55	POWERMIG500Wi-55	Positive Angled Bar	1
56	POWERMIG500Wi-56	Negative Angled Bar	1
57	POWERMIG500Wi-57	Angled Bar	1
58	POWERMIG500Wi-58	Panel Trim Strip	2
59	POWERMIG500Wi-59	Panel, Left Side (for Main Unit)	1
60	POWERMIG500Wi-60	Mounting Beam	1
61	POWERMIG500Wi-61	Top Panel (for Main Unit)	1
62	POWERMIG500Wi-62	Bottom Panel (for Main Unit)	1
63	POWERMIG500Wi-63	Rear Panel (for Main Unit)	1
64	POWERMIG500Wi-64	Fan	1
65	POWERMIG500Wi-65	Fan Cover	1
66	POWERMIG500Wi-66	Potentiometer Knob	3
67	POWERMIG500Wi-67	Quick Connector	1
68	POWERMIG500Wi-68	Joint	2
69	POWERMIG500Wi-69	Panel	1
70	POWERMIG500Wi-70	Control Panel PCB (for Main Unit)	1
71	POWERMIG500Wi-71	Inductance	1
72	POWERMIG500Wi-72	Front Plastic Frame	1
73	POWERMIG500Wi-73	Protection Panel	1
74	POWERMIG500Wi-74	Front Panel (for Main Unit)	1

NOTE: It is our policy to continually improve products and as such we reserve the right to alter data, specifications and component parts without prior notice. There may be alternative versions of this product, please contact us should you require this information.

IMPORTANT: No liability is accepted for incorrect use of product. Spare parts must be fitted by a competent person

WARRANTY: Guarantee is 12 months from purchase date, proof of which will be required for any claim.

Sealey Group, Kempson Way, Suffolk Business Park, Bury St Edmunds, Suffolk. IP32 7AR



01284 757500



sales@sealey.co.uk



www.sealey.co.uk



TM

Parts Information:
**500A Professional Gas/Gasless MIG/
 MMA/TIG Inverter Welder With Portable
 Wire Feeder & Water Cooler 415V 3ph
 Model No: POWERMIG500Wi**

Item	Part No.	Description	Qty
75	POWERMIG500Wi-75	Support Bracket	2
76	POWERMIG500Wi-76	Panel, Right Side (for Main Unit)	1
77	POWERMIG500Wi-77	IGBT PCB	1
78	POWERMIG500Wi-78	Current Transformer	1
79	POWERMIG500Wi-79	Water Tank Plate	1
80	POWERMIG500Wi-80	Water Tank Support Bracket	2
81	POWERMIG500Wi-81	Water Pump Bracket	1
82	POWERMIG500Wi-82	Radiator	1
83	POWERMIG500Wi-83	Water Tank Top Panel Cover	1
84	POWERMIG500Wi-84	Water Tank Rear Panel Cover	1
85	POWERMIG500Wi-85	Cable Grip	1
86	POWERMIG500Wi-86	Connection Socket (Blue - for Water Tank)	1
87	POWERMIG500Wi-87	Connection Socket (Red - for Water Tank)	1
88	POWERMIG500Wi-88	Pressure Plate	1
89	POWERMIG500Wi-89	Water Pipe Bracket	1
90	POWERMIG500Wi-90	Water Pump	1
91	POWERMIG500Wi-91	Toggle Switch	1

Item	Part No.	Description	Qty
92	POWERMIG500Wi-92	Water Tank	1
93	POWERMIG500Wi-93	Water Tank Front Panel	1
94	POWERMIG500Wi-94	Water Tank Bottom Panel	1
95	POWERMIG500Wi-95	Gas Cylinder Tray	1
96	POWERMIG500Wi-96	Roller Support Bracket	1
97	POWERMIG500Wi-97	Swivel Castor Wheel	2
98	POWERMIG500Wi-98	Fixed Wheel	2
--	POWERMIG500Wi-99	Earth Clamp Set 2m (Not Shown)	1
--	POWERMIG500Wi-100	Gas Hose 3m (Not Shown)	1
--	POWERMIG500Wi-101	Electrode Holder Set 2m (Not Shown)	1
--	POWERMIG500Wi-102	Power Cable 2m (Not Shown)	1
--	POWERMIG500Wi-103	Mig Torch 3m (Not Shown)	1
--	POWERMIG500Wi-104	Signal Connection Cable (Not Shown)	1
--	POWERMIG500Wi-105	Power Connection Cable (Not Shown)	1
--	POWERMIG500Wi-106	Cold Water Hose (Not Shown)	1
--	POWERMIG500Wi-107	Hot Water Hose (Not Shown)	1

NOTE: It is our policy to continually improve products and as such we reserve the right to alter data, specifications and component parts without prior notice. There may be alternative versions of this product, please contact us should you require this information.

IMPORTANT: No liability is accepted for incorrect use of product. Spare parts must be fitted by a competent person

WARRANTY: Guarantee is 12 months from purchase date, proof of which will be required for any claim.

Sealey Group, Kempson Way, Suffolk Business Park, Bury St Edmunds, Suffolk. IP32 7AR



01284 757500



sales@sealey.co.uk



www.sealey.co.uk