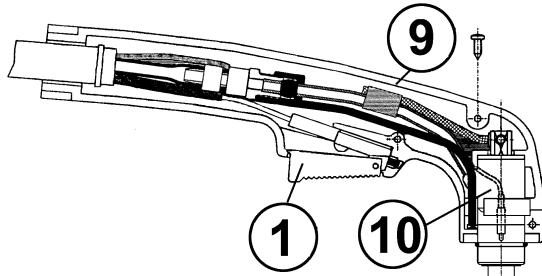
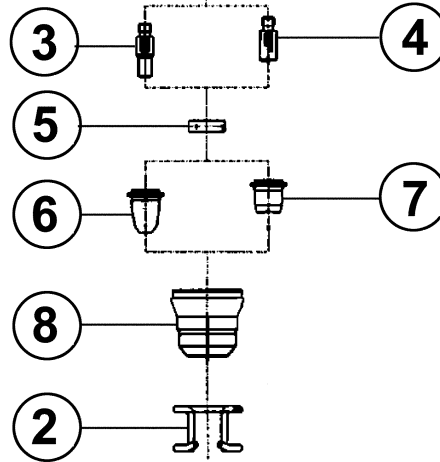


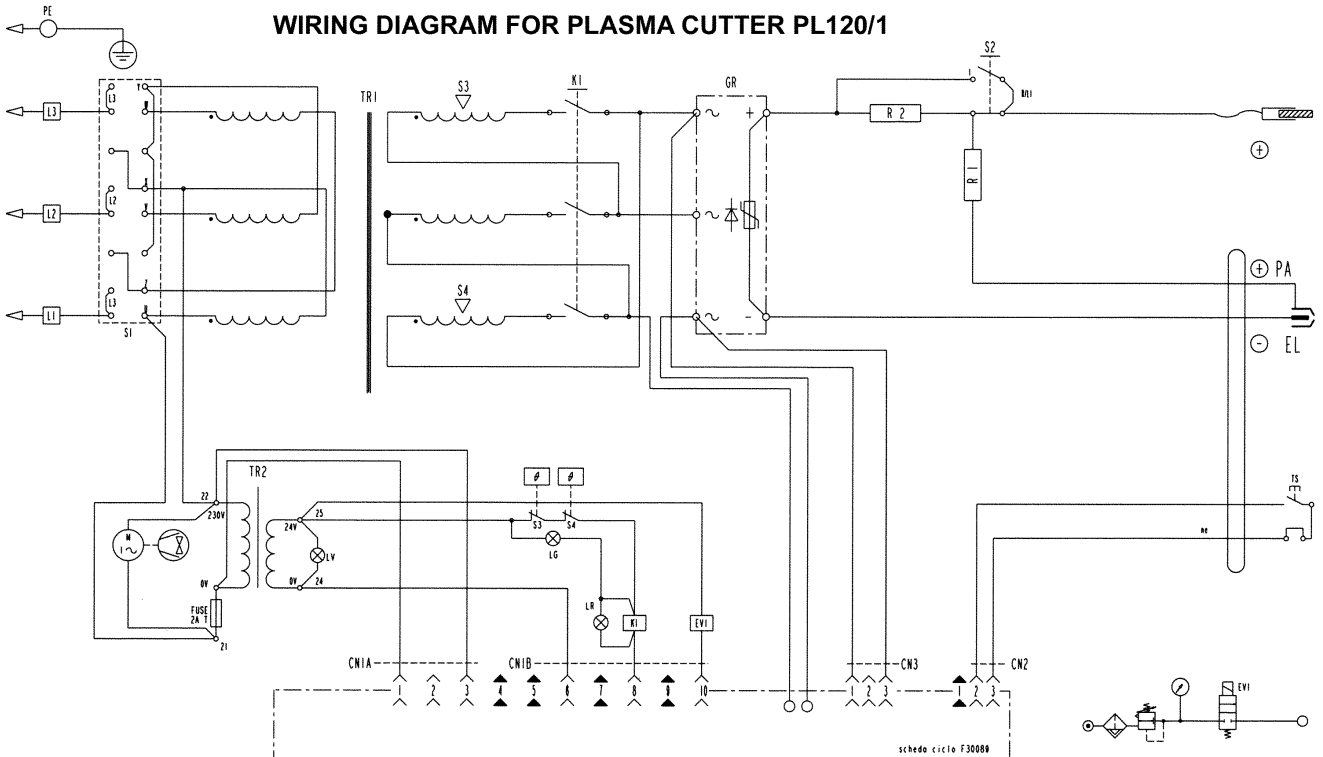
Issue Date: 02/12/02
Issue No: 1

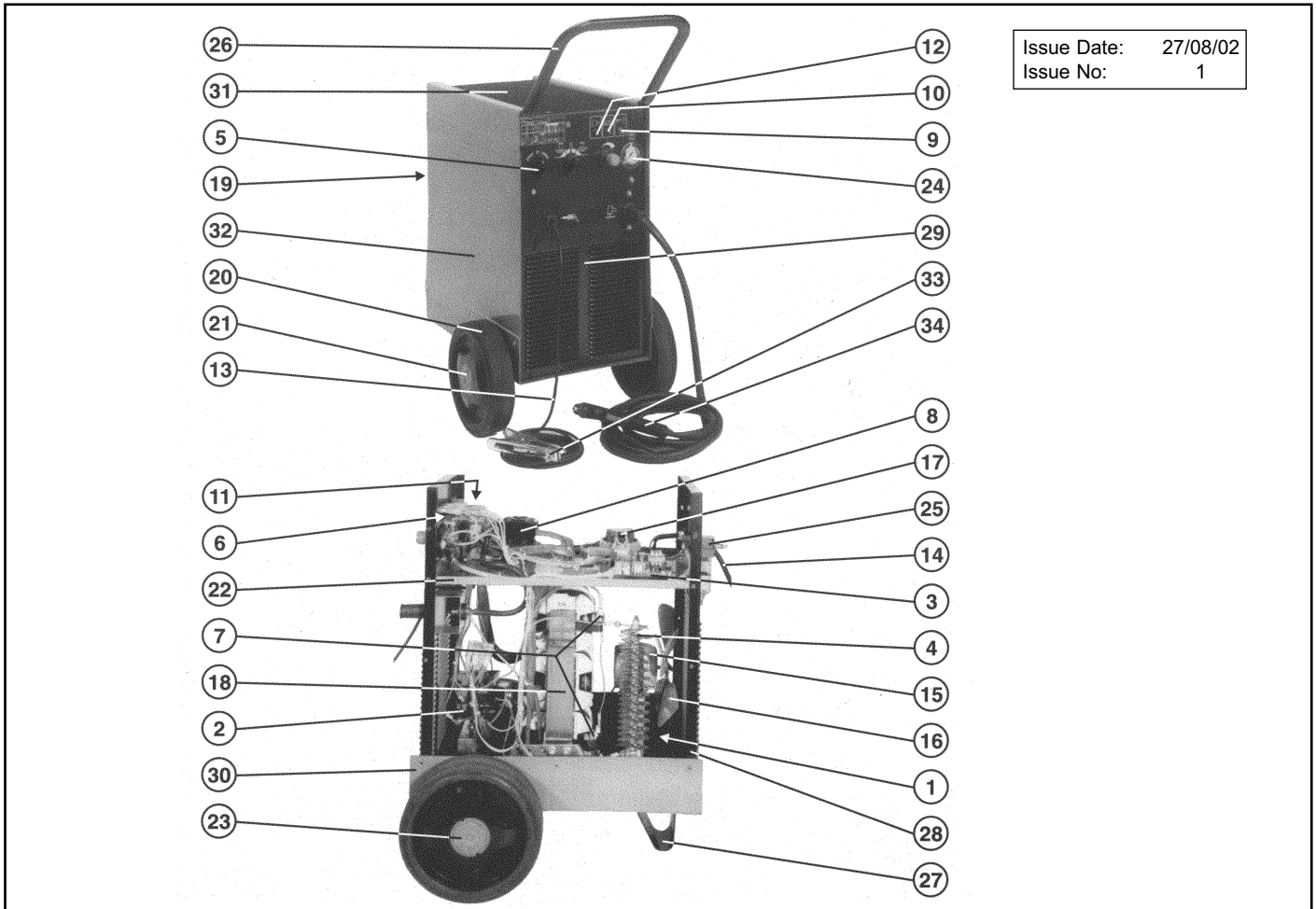


ITEM.	PART NO.	DESCRIPTION
1	120/722677	Torch pushbutton
2	120/802128	Spacer (pack of 5)
3	120/802420	Long electrodes (kit of 5)
4	120/802421	Short electrodes (kit of 5)
5	120/802422	Insulating diffusers (kit of 5)
6	120/802423	Long nozzles (kit of 5)
7	120/802424	Short nozzles (kit of 5)
8	120-802425	Safety cup (kit of 2)
9	120/802426	Complete handle
10	120-802427	Torch connection



WIRING DIAGRAM FOR PLASMA CUTTER PL120/1





ITEM.	PART NO.	DESCRIPTION
1	120-112284	RESISTANCE
2	120-112351	RECTIFIER
3	120-112423	REGULATION CARD
4	120-112547	RESISTANCE
5	120-122058	SWITCH KNOB
6	120-122347	SWITCH
7	120-122525	THERMOSTAT
8	120-122585	CONTACTOR
9	120-122594	YELLOW PILOT LAMP
10	120-122909	PILOT LAMP
11	120-122646	SWITCH
12	120-122709	LAMP
13	120-123252	CABLE 6 MMQ 5 M
14	120-132165	MAINS CABLE 4G2.5 2 M
15	120-152083	MOTOR
16	120-152113	FAN BLADE
17	120-164270	AUXILIARY TRANSFORMER
18	120-164923	TRANSFORMER

ITEM.	PART NO.	DESCRIPTION
19	120-312068	CABLE BUSHING
20	120-322189	FIXED WHEEL
21	120-322190	WHEEL CAP
22	120-482672	DIAPHRAGM
23	120-482680	AXLE
24	120-602022	MANOMETER
25	120-602040	AIR FILTER
26	120-644083	HANDLE
27	120-644408	FOOT
28	120-644629	BACK PANEL
29	120-646765	FRONT PANEL
30	120-650396	BOTTOM
31	120-650397	COVER
32	120-655875	SIDE PANEL
33	120-712001	WORK CLAMP 150 A
34	120-742065	PLASMA TORCH 6 M 50 A
35	120-122497	ELECTRO-VALVE