

NOTE: It is our policy to continually improve products and as such we reserve the right to alter data, specifications and component parts without prior notice.

IMPORTANT: No liability is accepted for incorrect use of product.

WARRANTY: Guarantee is 12 months from purchase date, proof of which will be required for any claim.



Parts Information:
Folding Engine Crane 1tonne
Model No: PH10.V4

Item	Part No.	Description
1	PH10.V4-01	FRAME BASE
2	PH10.V4-02	UPRIGHT
3	PH10.V4-03	LEFT & RIGHT LEG
4	PH10.V4-04	BOOM + COVER
5	PH10.V4-05	BOOM EXTENSION + COVER
6	PH10.V4-06	HYDRAULIC RAM (WITH METAL RELEASE KNOB)
7	PH10.V4-07	SUPPORT STRAP
8	PH10.V4-08	LOCATING PIN
9	PH10.V4-09	SUPPORT BRACE
10	PH10.V4-10	ADJUSTABLE ROD ASSEMBLY
11	PH10.V4-11	HANDLE ASSEMBLY
12	PH10.V4-12	HOOK ASSEMBLY
13	PH10.V4-13	WHEEL,FRONT FIXED (75x18x38)
14	PH10.V4-14	FRONT WHEEL SLEEVE
15	PH10.V4-15	WHEEL,SWIVEL CASTOR (90x9x30x118)
16	PH10.V4-16	FRONT WHEEL WASHER
17	PH10.V4-17	HANDLE
18	SN12.S	STEEL NUT M12 ZINC DIN934(SINGLE)

Item	Part No.	Description
19	PH10.V4-19	BOLT M8 X 20
20	PH10.V4-20	WASHER 8M
21	SN8.S	STEEL NUT M8 ZINC DIN934 (SINGLE)
22	PH10.V4-22	BOLT M8X12
23	HHB14110.S	HEX HEAD BOLT M14x110mm SINGLE
24	HHB1480.S	HEX HEAD BOLT M14x80mm SINGLE
25	HHB1690.S	HEX HEAD BOLT M16x90mm SINGLE
26	SWM14.SB	SPRING WASHER M14 BLACK(SINGLE)
27	SN14.S	STEEL NUT M14 ZINC DIN934(SINGLE)
28	FWM14.S	FLAT WASHER M14 SINGLE
29	PH10.V4-29	FLAT WASHER
30	SN16.S	STEEL NUT M16 ZINC DIN934(SINGLE)
31	PH10.V4-31	BOLT M16 X 75
32	HHB14100.S	HEX HEAD BOLT M14x100mm SINGLE
33	HHB1490.S	HEX HEAD BOLT M14x90mm SINGLE
34	PH10.V4-34	BOLT M12X80
35	PH10.V4-35	SPRING WASHER
36	HHB16110.S	HEX HEAD BOLT M16x110mm SINGLE
--	PH10.V4-FK	FIXING KIT (NOT SHOWN)

NOTE: It is our policy to continually improve products and as such we reserve the right to alter data, specifications and component parts without prior notice.

IMPORTANT: No liability is accepted for incorrect use of product.

WARRANTY: Guarantee is 12 months from purchase date, proof of which will be required for any claim.

Sealey Group, Kempson Way, Suffolk Business Park, Bury St Edmunds, Suffolk. IP32 7AR



01284 757500



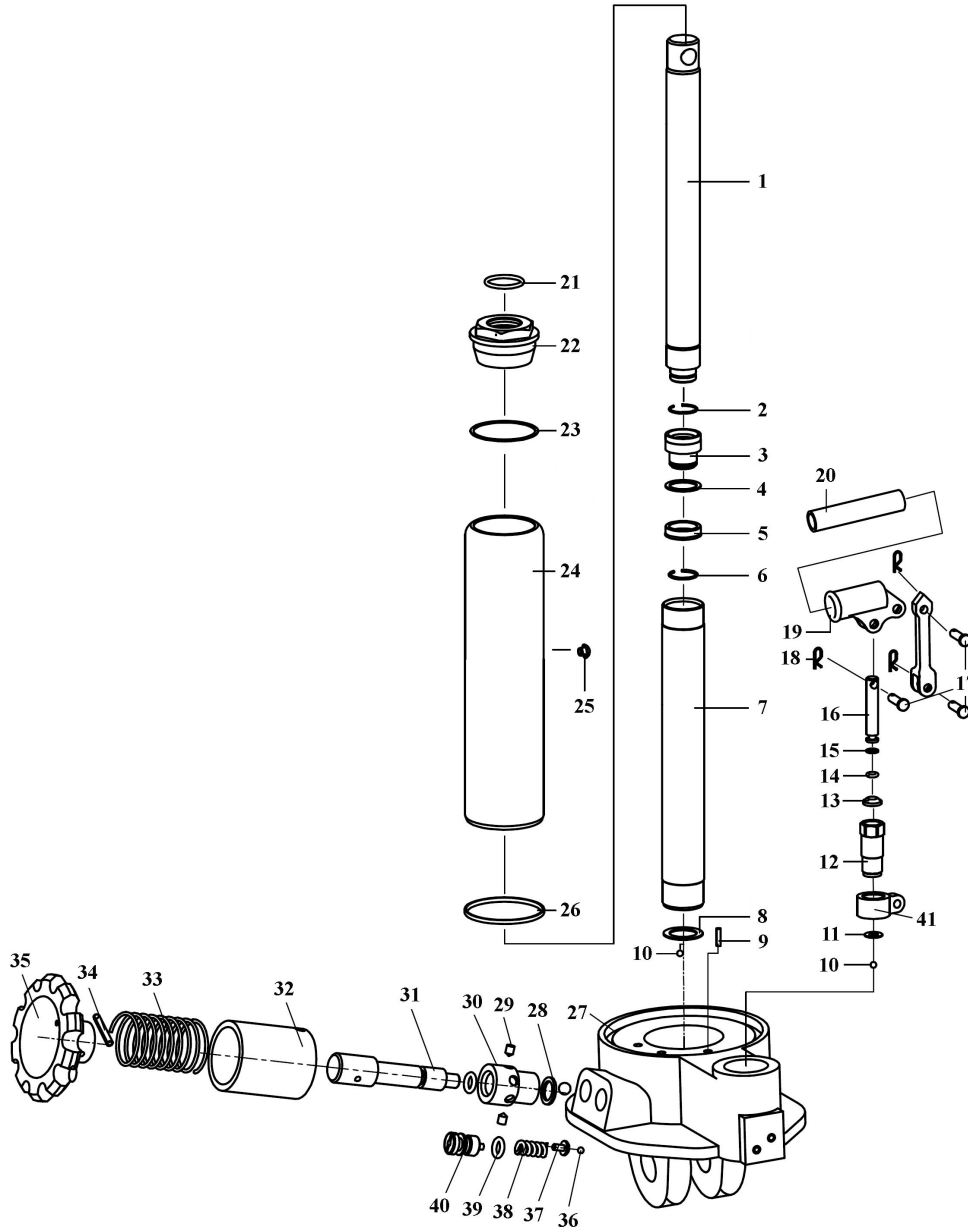
01284 703534



sales@sealey.co.uk



www.sealey.co.uk



NOTE: It is our policy to continually improve products and as such we reserve the right to alter data, specifications and component parts without prior notice.

IMPORTANT: No liability is accepted for incorrect use of product.

WARRANTY: Guarantee is 12 months from purchase date, proof of which will be required for any claim.



Parts Information:
Folding Engine Crane 1tonne
Model No: PH10.V4

Item	Part No.	Description
1	PH10.V4-P01	PISTON ROD
2	PH10.V4-P02	STEEL WIRE WASHER
3	PH10.V4-P03	PLUNGER
4	PH10.V4-P04	BOOM EXT. COVER
5	PH10.V4-P05	Y-RING
6	PH10.V4-P06	STEEL WIRE WASHER
7	PH10.V4-P07	CYLINDER
8	PH10.V4-P08	STEEL WASHER
9	PH10.V4-P09	FILTER OIL TUBE
10	SB-6.0	STEEL BALL 6.0mm
11	PH10.V4-P11	WASHER
12	PH10.V4-P12	PUMP CYLINDER
13	PH10.V4-P13	J-RING
14	PH10.V4-P14	O-RING
15	PH10.V4-P15	PUMP PLUNGER SEAL
16	PH10.V4-P16	PUMP PLUNGER
17	PH10.V4-P17	PIN
18	PH10.V4-P18	TORSION SPRING PIN
19	PH10.V4-P19	HANDLE SOCKET
20	PH10.V4-P20	HANDLE
21	PH10.V4-P21	O-RING

Item	Part No.	Description
22	PH10.V4-P22	TOP CUP
23	PH10.V4-P23	RECTANGLE RING
24	PH10.V4-P24	RESERVOIR
25	PH10.V4-P25	OIL FILLING
26	PH10.V4-P26	TRAPEZIUM RING
27	PH10.V4-P27	BASE
28	PH10.V4-P28	NYLON WASHER
29	PH10.V4-P29	HEX BOLT M6X10
30	PH10.V4-P30	RELEASE VALVE BODY
31	PH10.V4-P31	RELEASE VALVE
32	PH10.V4-P32	BUSH
33	PH10.V4-P33	TORSION SPRING
34	PH10.V4-P34	SPRING COLUMN PIN
35	PH10.V4-P35	HANDWHEEL
36	SB-3.0	STEEL BALL 3.0mm
37	PH10.V4-P37	SPRING BASE
38	PH10.V4-P38	SAFETY VALVE SPRING
39	PH10.V4-P39	O-RING
40	PH10.V4-P40	PLUG SCREW
41	PH10.V4-P41	HANDLE SOCKET BASE

NOTE: It is our policy to continually improve products and as such we reserve the right to alter data, specifications and component parts without prior notice.

IMPORTANT: No liability is accepted for incorrect use of product.

WARRANTY: Guarantee is 12 months from purchase date, proof of which will be required for any claim.

Sealey Group, Kempson Way, Suffolk Business Park, Bury St Edmunds, Suffolk. IP32 7AR



01284 757500



01284 703534



sales@sealey.co.uk



www.sealey.co.uk