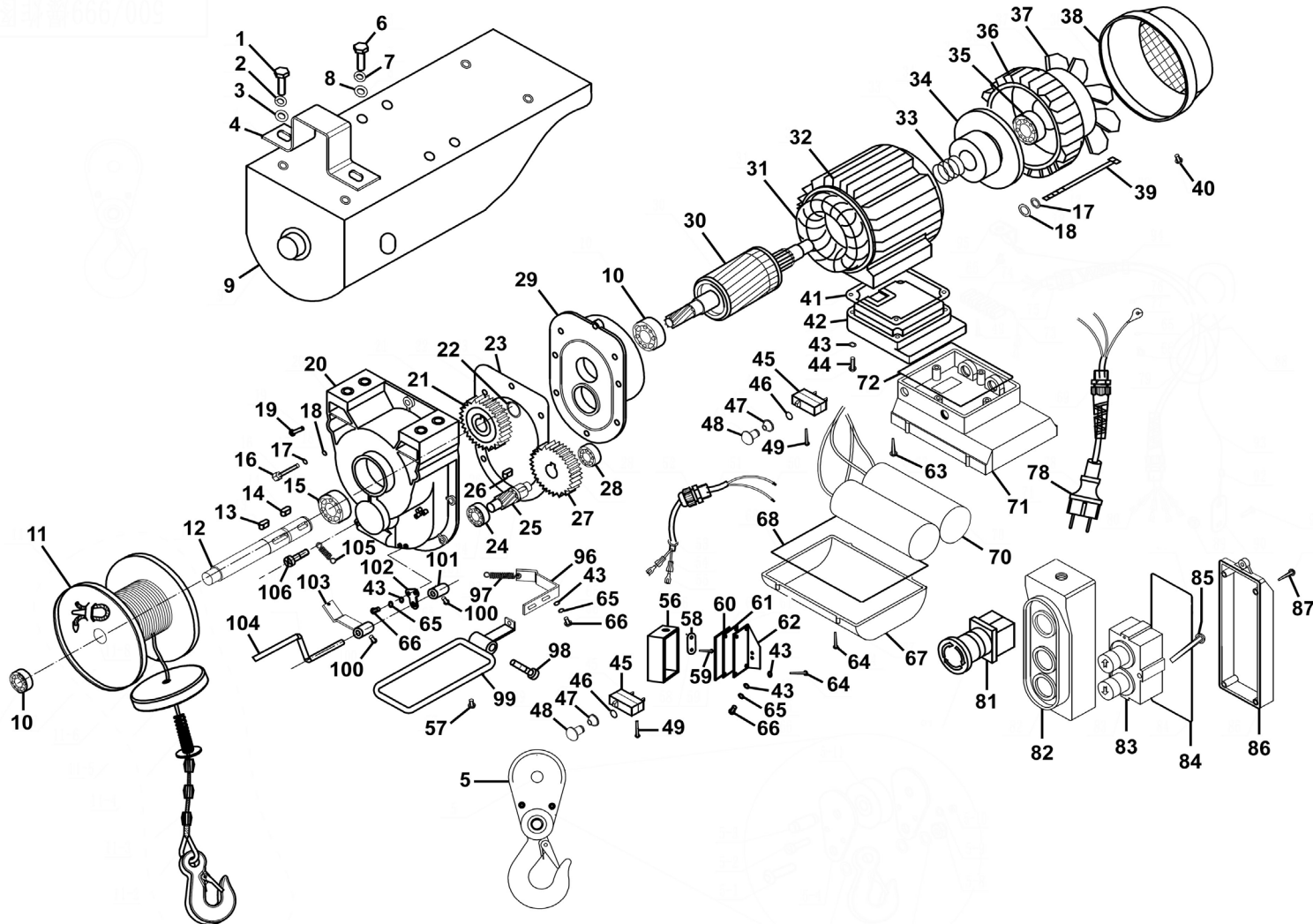




TM

Parts Information: Power Hoist 230V/1ph 1000kg Capacity Model No: PH1000



NOTE: It is our policy to continually improve products and as such we reserve the right to alter data, specifications and component parts without prior notice.

There may be alternative versions of this product, please contact us should you require this information.

IMPORTANT: No liability is accepted for incorrect use of product. Spare parts must be fitted by a competent person

WARRANTY: Guarantee is 12 months from purchase date, proof of which will be required for any claim.

Sealey Group, Kempson Way, Suffolk Business Park, Bury St Edmunds, Suffolk. IP32 7AR



01284 757500



sales@sealey.co.uk



www.sealey.co.uk



Parts Information:
Power Hoist 230V/1ph 1000kg Capacity
Model No: PH1000

Item	Part No.	Description	Qty
1	SS1230.S	Hex Head Set Screw M12 X 30 Zinc	4
2	FWM12.S	Flat Washer M12 Zinc	4
3	SWM12.S	Spring Washer M12 Zinc	4
4	PH1000-04	Top Clamp	2
5	PH1000-05	Pulley Assembly	1
6	SS1025.S	Hex Head Set Screw M10 X 25 Zinc	4
7	SWM10.S	Spring Washer M10 Zinc	4
8	FWM10.S	Flat Washer M10 Zinc	4
9	PH1000-09	Housing Cover	1
10	B/6204	Bearing 6204	2
11	PH1000-11	Wire Rope Assembly	1
12	PH1000-12	Shaft for Rope Drum Ø18x146	1
13	PH1000-13	Flat Key Ø8 x 30	1
14	PH1000-14	Flat Key Ø8 x 20	2
15	B/6205	Bearing 6205	1
16	SCB816.S	Socket Cap Bolt M8 x 16mm	6
17	SWM6.S	Spring Washer M6 Zinc	10
18	FWM6.S	Flat Washer M6 Zinc	10
19	MSP618.S	Machine Screw Pan Head M6 x 18mm	2
20	PH1000-20	Gearbox	1
21	PH1000-21	Stage Gear (Small)	1
22	PH1000-22	External Circlip Ø25	1
23	PH1000-23	Paper Gasket	1
24	B/6202	Bearing 6202	1
25	PH1000-25	Gear Driven Shaft	1
26	PH1000-26	Flat Key Ø6 x 16	1
27	PH1000-27	Stage Gear (Large)	1
28	B/6201	Bearing 6201	1
29	PH1000-29	Front Housing Cover	1
30	PH1000-30	Rotor	1
31	PH1000-31	Stator	1
32	PH1000-32	Motor Housing	1
33	PH1000-33	Brake Spring Ø3.2mm	1
34	PH1000-34	Brake Assembly	1
35	B/6203	Bearing 6203	1
36	PH1000-36	Back Housing Cover	1
37	PH1000-37	Fan	1
38	PH1000-38	Fan Cover	1
39	PH1000-39	Hex Bolt M6x210	4
40	MSP46.S	Machine Screw Pan Head M4 X 6mm	4
41	PH1000-41	Connection Box Seal (for Lower Cover/ Motor Housing)	1
42	PH1000-42	Connection Box, Lower Cover	1
43	FWM4.S	Flat Washer M4	14

Item	Part No.	Description	Qty
44	MSP412.S	Machine Screw Pan Head M4 X 12mm	4
45	PH1000-45	Position Limit Switch (AC-15, 8A, AC250V)	2
46	PH1000-46	External Circlip Ø8	2
47	PH1000-47	Position Limit Switch Spring	1
48	PH1000-48	Position Limit Switch Button	2
49	PH1000-49	Self-Tapping Screw ST2.9x14	4
56	PH1000-56	Lower Cover for Limit Position Box	1
57	PH1000-57	Plate	1
58	PH1000-58	Plate	1
59	PH1000-59	Self-Tapping Screw ST2.9x8	2
60	PH1000-60	Seal Ring	1
61	PH1000-61	Upper Cover for Limit Position Box	1
62	PH1000-62	Fixing Plate	1
63	PH1000-63	Self-Tapping Screw ST4.2x15	4
64	PH1000-64	Self-Tapping Screw ST2.9x10	8
65	FWM4.S	Flat Washer M4	7
66	MSP48.S	Machine Screw Pan Head M4 X 8mm	8
67	PH1000-67	Connection Box, Upper Cover	1
68	PH1000-68	Connection Box Seal (for Middle/ Upper Cover)	1
70	PH1000-70	Capacitor 450V 35uF CBB60	1
71	PH1000-71	Connection Box, Middle Cover	1
72	PH1000-72	Connection Box Seal (for Middle/ Lower Cover)	1
78	PH1000-78	Plug & Cable	1
81	PH1000-81	Emergency Stop Switch AC250V	1
82	PH1000-82	Switch Housing Upper Cover	1
83	PH1000-83	Switch (Up/Down) 16A	1
84	PH1000-84	Switch Housing Seal	1
85	PH1000-85	Self-Tapping Screw ST4x35	2
86	PH1000-86	Switch Housing Lower Cover	1
87	PH1000-87	Self-Tapping Screw ST4x20	4
96	PH1000-96	Bracket for Limit Switch Lever	1
97	PH1000-97	Spring for Limit Switch Lever	1
98	SCB840.S	Socket Cap Bolt M8 x 40mm	1
99	PH1000-99	Position Limit Lever	1
100	MSP510.S	Machine Screw Pan Head M5 x 10mm	2
101	PH1000-101	Sleeve for Limit Pole	1
102	PH1000-102	Limit Position Plate	1
103	PH1000-103	Limit Position Pole (A)	1
104	PH1000-104	Limit Position Pole (B)	1
105	PH1000-105	Spring for Limit Position Switch	1
106	PH1000-106	Pan Head Screw M5x38	1

NOTE: It is our policy to continually improve products and as such we reserve the right to alter data, specifications and component parts without prior notice. There may be alternative versions of this product, please contact us should you require this information.

IMPORTANT: No liability is accepted for incorrect use of product. Spare parts must be fitted by a competent person

WARRANTY: Guarantee is 12 months from purchase date, proof of which will be required for any claim.

Sealey Group, Kempson Way, Suffolk Business Park, Bury St Edmunds, Suffolk. IP32 7AR



01284 757500



sales@sealey.co.uk



www.sealey.co.uk