

fig.1

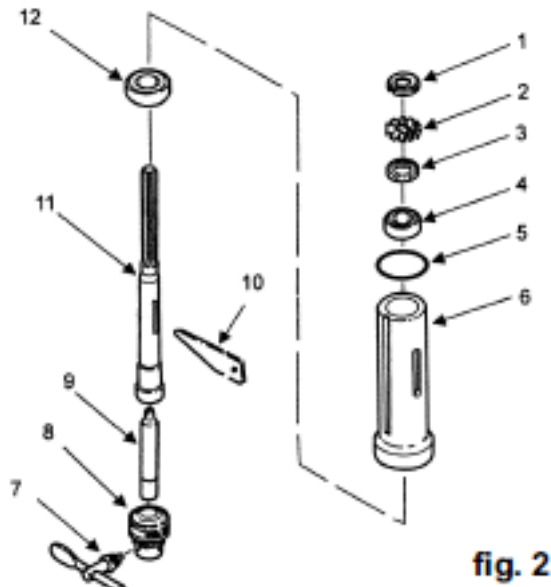
Item	Part No.	Description
1	GSM610.S	GRUB SCREW M6x10 (SINGLE)
2	PDM155B-1-02	COLLAR RACK
3	PDM260F-1-18	GEAR HELICAL
4	PDM170F-1-04	CRANK
6	PDM240F-1-06	TABLE
7	PDM240F-1-07	TABLE CLAMP
8	PDM170F-1-08	SCREW HEX M16X20-35
9	PDM240F-1-09	ARM-TABLE
10	PDM155B-1-10	BASE

Item	Part No.	Description
11	PDM240F-1-11	COLUMN SUPPORT
12	SS1040.S	HEX HEAD SET SCREW M10x40mm SINGLE
13	GSM1012.S	GRUB SCREW M10x12 (SINGLE)
14	PDM155B-1-14	TUBE COLUMN
15	PDM240F-1-15	RACK APPROX 83cm
16	PDM260F-1-17	COLUMN CLAMP
17	PDM155B-1-17	TABLE SUPPORT
18	PDM155B-1-18	WORM ELEVATION
19	PDM260F-1-16	GEAR PIN

NOTE: It is our policy to continually improve products and as such we reserve the right to alter data, specifications and component parts without prior notice.

IMPORTANT: No liability is accepted for incorrect use of product.

WARRANTY: Guarantee is 12 months from purchase date, proof of which will be required for any claim.



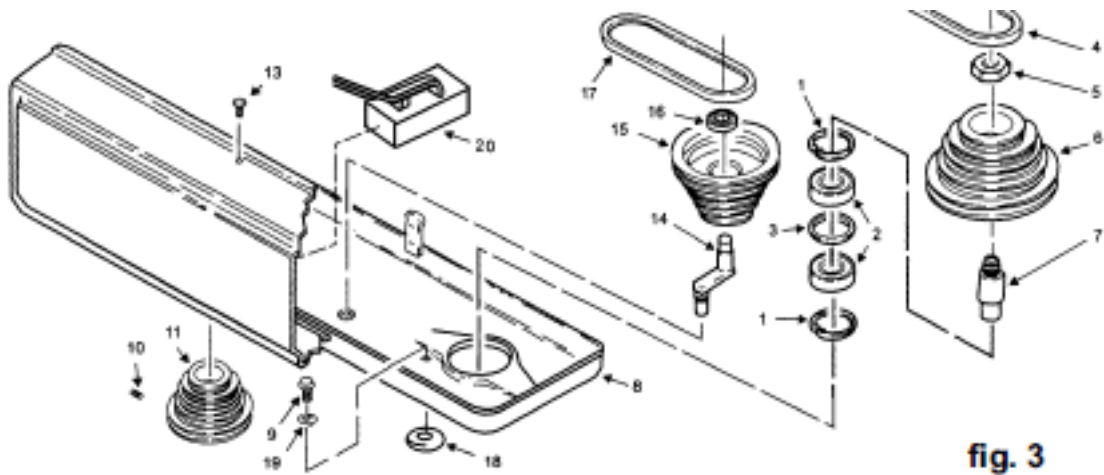
Item	Part No.	Description
1	PDM240F-2-01	LOCK NUT
2	PDM240F-2-02	LOCKING RING
3	PDM240F-2-03	METAL SEAL WASHER
4	B/6203ZZ	BEARING 6203ZZ
5	PDM240F-2-05	LARGE O-RING
6	PDM240F-2-06	TUBE QUILL

Item	Part No.	Description
7	PDM260F-2-08	CHUCK KEY
8	PDM260F-2-09	CHUCK JT3 20mm
9	PDM240F-2-09	ARBOR
10	PDM170F-2-10	KEY DRIFT
11	PDM240F-2-11	SPINDLE
12	B/6206ZZ	BEARING 6206ZZ

NOTE: It is our policy to continually improve products and as such we reserve the right to alter data, specifications and component parts without prior notice.

IMPORTANT: No liability is accepted for incorrect use of product.

WARRANTY: Guarantee is 12 months from purchase date, proof of which will be required for any claim.



Item	Part No.	Description
1	PDM240F-3-01	RETAINING RING
2	B/6205ZZ	BEARING 6205ZZ
3	PDM240F-3-03	BEARING SPACER
4	PDM240F-3-04	V-BELT (ID-720)
5	PDM240F-3-05	PULLEY NUT
6	PDM240F-3-06	PULLEY SPINDLE
7	PDM240F-3-07	PULLEY INSERT
8	PDM240F-3-08	PULLEY GUARD
10	PDM260F-3-10	SCREW RD HD WASHER M6X1.0-16
11	GSM815.S	GRUB SCREW M8x15 (SINGLE)

Item	Part No.	Description
12	PDM240F-3-11N	MOTOR PULLEY (NEW TYPE - 24mm)
13	MSP512.SB	MACHINE SCREW PAN HEAD PHILLIPS M5x12mm
14	PDM240F-3-14	IDLER PIVOT
15	PDM240F-3-15	CENTRE PULLEY
16	B/6202ZZ	BEARING 6202ZZ
17	PDM240F-3-17	V-BELT A27
18	PDM155B-3-18	FOAM WASHER
19	PDM240F-3-19	LOCK WASHER M16
20	PDM.MS	MICRO SWITCH FOR PDM DRILLS

NOTE: It is our policy to continually improve products and as such we reserve the right to alter data, specifications and component parts without prior notice.

IMPORTANT: No liability is accepted for incorrect use of product.

WARRANTY: Guarantee is 12 months from purchase date, proof of which will be required for any claim.

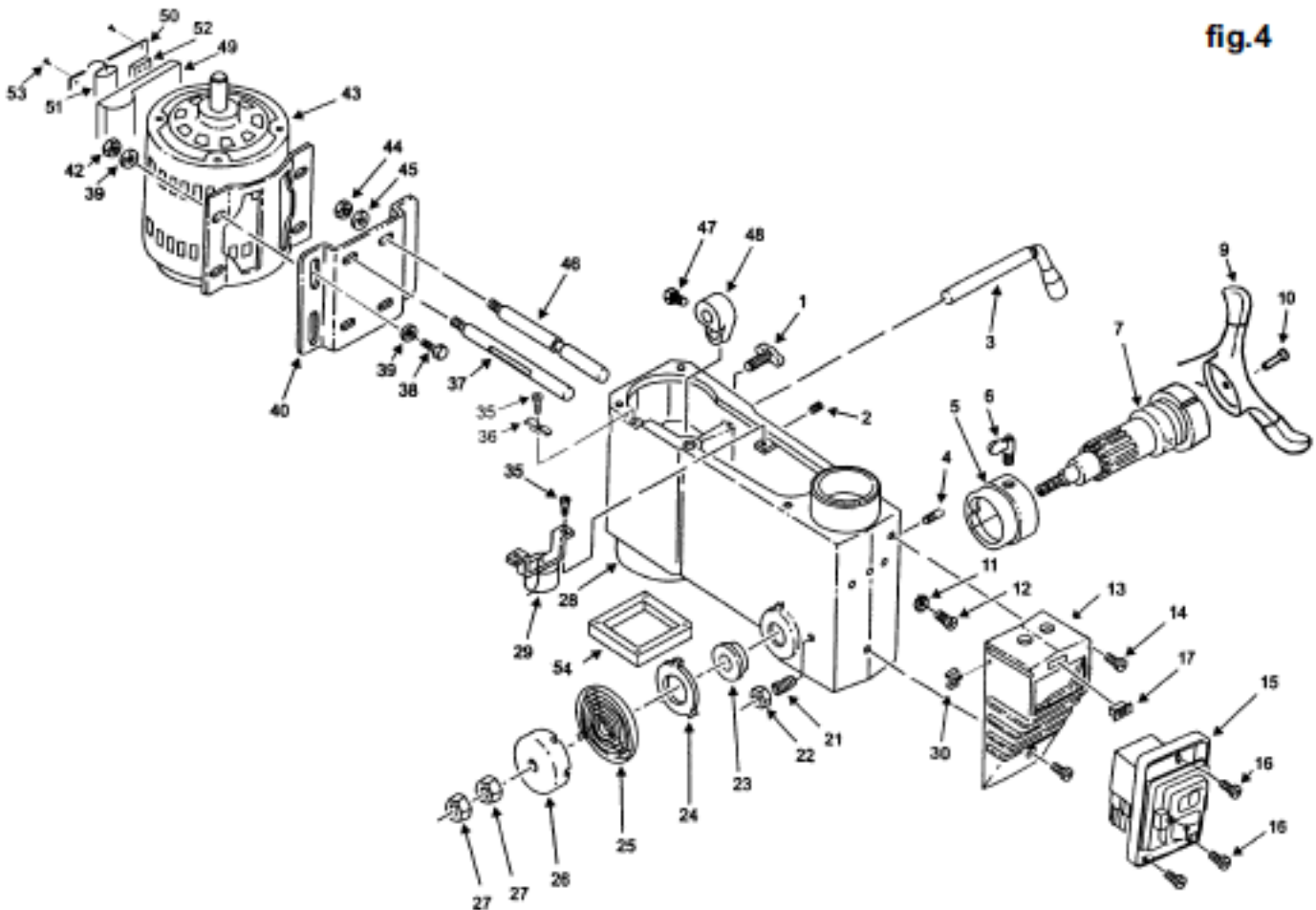


fig.4

NOTE: It is our policy to continually improve products and as such we reserve the right to alter data, specifications and component parts without prior notice.

IMPORTANT: No liability is accepted for incorrect use of product.

WARRANTY: Guarantee is 12 months from purchase date, proof of which will be required for any claim.



Parts Information:
**Pillar Drill Floor 16-Speed 1635mm Height
230V
Model No: PDM240F**

Item	Part No.	Description
1	PDM170F-4-01	MOTOR ADJUSTMENT KNOB
2	GSM1012.S	GRUB SCREW M10x12 (SINGLE)
3	PDM170F-4-03	BELT TENSION HANDLE
4	PDM240F-4-04	PIN-STOP
5	PDM260F-4-21	DEPTH STOP RING
6	PDM155B-4-06	LOCK DEPTH SCREW
7	PDM240F-4-07	HUB
--	PDM155B-4-06	LOCK DEPTH SCREW (NOT SHOWN)
9	PDM155B-4-09	HANDLE
10	SCB820.SB	SOCKET HEAD CAP SCREW M8x20 BLACK
11	PDM170F-4-11	LOCK WASHER M5
12	MSP58.SB	MACHINE SCREW PAN HEAD PHILLIPS M5x8mm
13	PDM240F-4-13	SWITCH BOX
14	PDM240F-4-14	SCREW PAN HEAD M5X0.8-16
15	PDM170F-4-15	SWITCH
16	PDM240F-4-16	SCREW
17	PDM155B-4-17	LIGHT SWITCH
21	PDM240F-4-21	SET SCREW SPECIAL 10X1.5-27
22	PDM240F-4-22	M10 HALF NUT BLACK
23	PDM170F-4-23	SPRING SEAT
24	PDM170F-4-24	SPRING RETAINER
25	PDM170F-4-25	SPRING TORSION
26	PDM170F-4-26	SPRING CAP
27	SN10.SB	STEEL NUT M10 BLACK (SINGLE)

Item	Part No.	Description
28	PDM240F-4-28	HEAD
29	PDM260F-4-48	BULB SOCKET
30	PDM240F-4-30	CHUCK KEY CLIP
35	PDM170F-4-35	SCREW
36	PDM155B-4-36	CORD CLAMP
37	PDM240F-4-37	MOTOR BRACKET SUPPORT
38	SS825.SB	HEX HEAD SET SCREW M8x25mm SINGLE BLACK
39	PDM155B-4-39	WASHER
40	PDM170F-4-40	MOTOR MOUNT
--	PDM240F-4-40N	MOTOR MOUNT (NEW TYPE) (NOT SHOWN)
42	SN8.SB	STEEL NUT M8 BLACK (SINGLE)
43	PDM240F-4-43N	MOTOR (NEW TYPE - 24mm SPINDLE)
44	PDM170F-4-44	HEX NUT M12X1.75
45	PDM170F-4-45	LOCKWASHER 1/2
46	PDM240F-4-46	MOTOR BRACKET SUPPORT
47	PDM170F-4-47	SCREW HEX HD M8X1.25-16
48	PDM260F-4-02	ADJUSTING LEVER
49	PDM155B-4-49	TERMINAL BOX
50	PDM155B-4-50	TERMINAL BOX COVER
51	PDM240F-4-51	CAPACITOR 30uf CBB5 450v 50/60hz 100x40
52	PDM155B-4-52	TERMINAL BLOCK
53	MSP410.SB	MACHINE SCREW PAN HEAD PHILLIPS M4x10mm
--	DPG230	DRILL PRESS GUARD 75mm (NOT SHOWN)
54	PDM240F-4-29C	LIGHT COVER

NOTE: It is our policy to continually improve products and as such we reserve the right to alter data, specifications and component parts without prior notice.

IMPORTANT: No liability is accepted for incorrect use of product.

WARRANTY: Guarantee is 12 months from purchase date, proof of which will be required for any claim.

Sealey Group, Kempson Way, Suffolk Business Park, Bury St Edmunds, Suffolk. IP32 7AR



01284 757500



01284 703534



sales@sealey.co.uk



www.sealey.co.uk