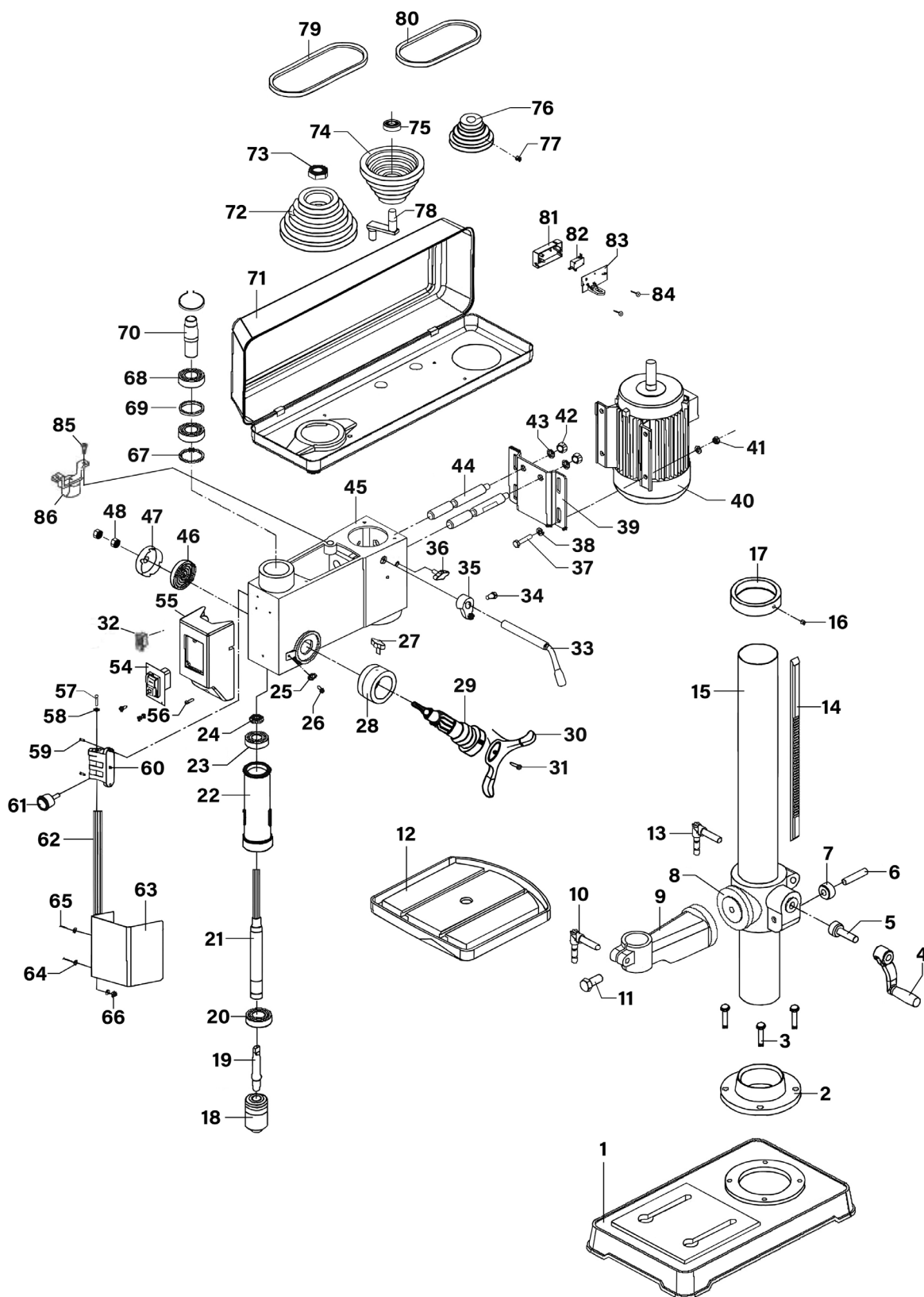


Parts Information: Premier Floor Standing Pillar Drill 16-Speed 750W/230V Model No: PDM240F.V3



NOTE: It is our policy to continually improve products and as such we reserve the right to alter data, specifications and component parts without prior notice. There may be alternative versions of this product, please contact us should you require this information.

IMPORTANT: No liability is accepted for incorrect use of product. Spare parts must be fitted by a competent person

WARRANTY: Guarantee is 12 months from purchase date, proof of which will be required for any claim.

Jack Sealey Ltd t/a Sealey Group, Kempson Way, Suffolk Business Park, Bury St Edmunds, Suffolk, IP32 7AR UK

Jack Sealey (EU) Ltd t/a Sealey Group, Farney Street, Carrickmacross, Co. Monaghan, A81 PK68 Ireland

Tel: 01284 757500 • Email: sales@sealey.co.uk • Web: www.sealey.co.uk



TM

Parts Information: Premier Floor Standing Pillar Drill 16-Speed 750W/230V Model No: PDM240F.V3

Item	Part No.	Description
1	PDM240F-V3-01	Base (Dark Grey)
2	PDM240F-V3-02	Support Column (Dark Grey)
3	SS1040.S	Hex Head Set Screw M10 X 40 Zinc
4	PDM240FV2-04	Table Crank
5	PDM240FV2-05	Elevation Worm
6	PDM240FV2-06	Pin for Gear
7	PDM240FV2-07	Helical Gear
8	PDM240F-V3-08	Table Bracket (Dark Grey)
9	PDM240F-V3-09	Table Arm (Dark Grey)
10	PDM240FV2-10	Table Clamp
11	PDM240FV2-11	Screw
12	PDM240FV2-12	Table
13	PDM240FV2-13	Locking Handle
14	PDM240FV2-14	Rack
15	PDM240F-V3-15	Column Tube
16	GSM610.S	Grub Screw M6x10 (single)
17	PDM240FV2-17	Column Collar
18	PDM240FV2-18	Chuck
--	PDM260F-2-08	Chuck key (Not Shown)
19	PDM240FV2-19	Arbor
20	B/6206ZZ	Bearing 6206zz
21	PDM240FV2-21	Spindle
22	PDM240FV2-22	Quill Tube
23	B/6203ZZ	Bearing 6203ZZ
24	PDM240FV2-24	Lock Nut
25	PDM240FV2-25	Pointer
26	PDM240FV2-26	Pan Head Screw
27	PDM240FV2-27	Depth Screw Lock
28	PDM240FV2-28	Ring Depth Stop w/Scale
29	PDM240FV2-29	Hub
30	PDM240FV2-30	Handle
31	SCB820.SB	Socket Cap Bolt M8 x 20mm Black
32	PDM240FV2-32	Lampn On/Off Rocker Switch
33	PDM240FV2-33	Tensioning Handle
34	PDM240FV2-34	Screw Hex Hd M8x1.25-16
35	PDM240FV2-35	Adjusting Lever
36	PDM240FV2-36	Motor Adjusting Knob
37	SS825.SB	Hex Head Set Screw M8 X 25 Black
38	FWM8.SB	Flat Washer M8 Black
39	PDM240FV2-39	Motor Mount
40	PDM240F-V3-40	Motor (Black)
41	SN8.SB	Steel Nut M8 Black

Item	Part No.	Description
42	SN8.SB	Steel Nut M8 Black
43	SWM8.SB	Spring Washer M8 Black
44	PDM240FV2-44	Motor Bracket Support
45	PDM240FV2-45	Head w/ Pointer and Trim
46	PDM240FV2-46	Torsion Spring
47	PDM240FV2-47	Spring Cap
48	PDM240FV2-48	Spring Cap Nut
54	PDM240FV2-54	Switch, On/Off Press Button c/w Emergency Stop Cover
55	PDM240FV2-55	Housing for On/Off Press Button Switch
56	PDM240FV2-56	Screw Pan Head M5x0.8-16
57	PDM240FV2-57	Hex screw
58	PDM240FV2-58	Washer
59	PDM240FV2-59	Pan Head Screw
60	PDM240FV2-60	Micro Switch, Complete with Housing
61	PDM240FV2-61	Lock Button
62	PDM240FV2-62	Chuck Guard Rod (360mm)
63	PDM260FV2-63	Chuck Guard Assembly
64	FWM5.S	Flat Washer M5 Zinc
65	PDM240FV2-65	Pan Head Screw
66	NLN5.S	Nyloc Nut M5 Zinc
67	PDM240FV2-67	Retaining Ring
68	B/6205ZZ	Bearing 6205zz
69	PDM240FV2-69	Bearing Spacer
70	PDM240FV2-70	Pulley Insert
71	PDM240FV2-71	Pulley Guard
72	PDM240FV2-72	Spindle Pulley
73	PDM240FV2-73	Pulley Nut
74	PDM240FV2-74	Center Pulley
75	B/6202ZZ	Bearing 6202zz
76	PDM240FV2-76	Motor Pulley
77	GSM815.S	Grub screw M8x15 (single)
78	PDM240FV2-78	Idler Pivot
79	V/M25	V-Belt (Id-630) M25
80	V/M26	V-Belt (Id-650) M26
81	PDM240FV2-81	Rear Cover for Microswitch
82	PDM240FV2-82	Micro Switch. w/o Housing
83	PDM240FV2-83	Front Cover for Micro Switch
84	PDM240FV2-84	Self-tapping Screw
85	PDM240FV2-85	Pan Head Screw
86	PDM240FV2-86	Lamp Socket

NOTE: It is our policy to continually improve products and as such we reserve the right to alter data, specifications and component parts without prior notice. There may be alternative versions of this product, please contact us should you require this information.

IMPORTANT: No liability is accepted for incorrect use of product. Spare parts must be fitted by a competent person

WARRANTY: Guarantee is 12 months from purchase date, proof of which will be required for any claim.

Jack Sealey Ltd t/a Sealey Group, Kempson Way, Suffolk Business Park, Bury St Edmunds, Suffolk, IP32 7AR UK
Jack Sealey (EU) Ltd t/a Sealey Group, Farney Street, Carrickmacross, Co. Monaghan, A81 PK68 Ireland
Tel: 01284 757500 • **Email:** sales@sealey.co.uk • **Web:** www.sealey.co.uk