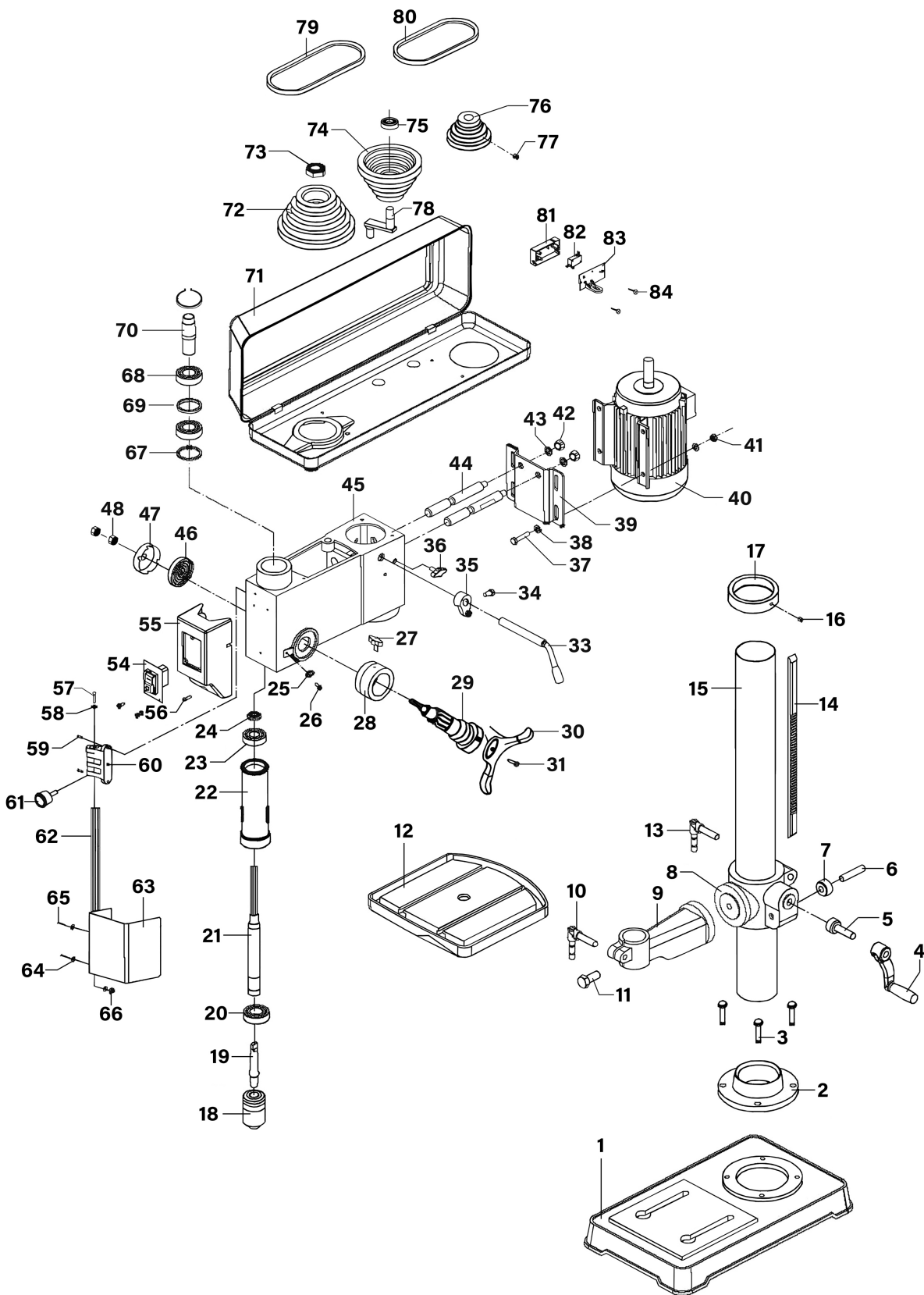


### Parts Information:

# Premier Floor Pillar Drill 16-Speed 370W/230V

**Model No: PDM170F.V3**



**NOTE:** It is our policy to continually improve products and as such we reserve the right to alter data, specifications and component parts without prior notice. There may be alternative versions of this product, please contact us should you require this information.

**IMPORTANT:** No liability is accepted for incorrect use of product. Spare parts must be fitted by a competent person

**WARRANTY:** Guarantee is 12 months from purchase date, proof of which will be required for any claim.

**Jack Sealey Ltd t/a Sealey Group**, Kempson Way, Suffolk Business Park, Bury St Edmunds, Suffolk, IP32 7AR UK

**Jack Sealey (EU) Ltd t/a Sealey Group**, Farney Street, Carrickmacross, Co. Monaghan, A81 PK68 Ireland

**Tel:** 01284 757500 • **Email:** [sales@sealey.co.uk](mailto:sales@sealey.co.uk) • **Web:** [www.sealey.co.uk](http://www.sealey.co.uk)



Parts Information:  
**Premier Floor Pillar Drill 16-Speed**  
**370W/230V**  
**Model No: PDM170F.V3**

Item	Part No.	Description
1	PDM170F-V3-01	Base (Dark Grey)
2	PDM170F-V3-02	Support Column (Dark Grey)
3	SS1040.S	Hex Head Set Screw M10 X 40 Zinc
4	PDM170F.V2-04	Table Crank
5	PDM170F.V2-05	Elevation Worm
6	PDM170F.V2-06	Pin for Gear
7	PDM170F.V2-07	Helical Gear
8	PDM170F-V3-08	Table Bracket (Dark Grey)
9	PDM170F-V3-09	Table Arm (Dark Grey)
10	PDM170F.V2-10	Table Clamp
11	PDM170F.V2-11	Screw
12	PDM170F.V2-12	Table
13	PDM170F.V2-13	Locking Handle
14	PDM170F.V2-14	Rack
15	PDM170F-V3-15	Column Tube
16	GSM610.S	Grub Screw M6x10 (single)
17	PDM170F.V2-17	Column Collar
18	PDM170F.V2-18	Chuck
19	PDM170F.V2-19	Arbor
20	B/6204-2RS	Bearing 6204-2rs
21	PDM170F.V2-21	Spindle
22	PDM170F.V2-22	Quill Tube
23	B/6201-2RS	Bearing 6201-2rs
24	PDM170F.V2-24	Lock Nut
25	PDM170F.V2-25	Pointer
26	PDM170F.V2-26	Pan Head Screw
27	PDM170F.V2-27	Depth Screw Lock
28	PDM170F.V2-28	Ring Depth Stop w/ Scale
29	PDM170F.V2-29	Hub
30	PDM170F.V2-30	Handle
31	SCB820.SB	Socket Cap Bolt M8 x 20mm Black
33	PDM170F.V2-33	Tensioning Handle
34	SCB815.SB	Socket Cap Bolt M8 x 15mm Black
35	PDM170F.V2-35	Adjusting Lever
36	PDM170F.V2-36	Motor Adjusting Knob
37	SS825.SB	Hex Head Set Screw M8 X 25 Black
38	FWM8.SB	Flat Washer M8 Black
39	PDM170F.V2-39	Motor Mount
40	PDM170F-V3-40	Motor (Black)
41	SN8.SB	Steel Nut M8 Black

Item	Part No.	Description
42	SN8.SB	Steel Nut M8 Black
43	SWM8.SB	Spring Washer M8 Black
44	PDM170F.V2-44	Motor Bracket Support
45	PDM170F.V2-45	Head w/ Pointer and Trim
46	PDM170F.V2-46	Torsion Spring
47	PDM170F.V2-47	Spring Cap
48	PDM170F.V2-48	Spring Cap Nut
54	PDM170F.V2-54	On/Off Press Button Power Switch
55	PDM170F.V2-55	Housing for Press Button Power Switch
56	MSP58.SB	Machine Screw Pan Head Phillips M5 x 8mm Black
57	PDM170F.V2-57	Hex Screw
58	PDM170F.V2-58	Big Washer
59	PDM170F.V2-59	Pan Head Screw
60	PDM170F.V2-60	Micro Switch Complete in Housing
61	PDM170F.V2-61	Lock Button
62	PDM170F.V2-62	Chuck Guard Rod (300mm)
63	PDM170F.V2-63	Chuck Guard
64	PDM170F.V2-64	Washer
65	PDM170F.V2-65	Pan Head Screw
66	PDM170F.V2-66	Self-locking Nut
67	PDM170F.V2-67	Retaining Ring
68	B/6203-2RS	Bearing 6203-2rs
69	PDM170F.V2-69	Bearing Spacer
70	PDM170F.V2-70	Pulley Insert
71	PDM170F.V2-71	Pulley Guard
72	PDM170F.V2-72	Spindle Pulley
73	PDM170F.V2-73	Pulley Nut
74	PDM170F.V2-74	Center Pulley
75	B/6202ZZ	Bearing 6202zz
76	PDM170F.V2-76	Motor Pulley
77	GSM815.S	Grub Screw M8x15 (single)
78	PDM170F.V2-78	Idler Pivot
79	V/M25	V-belt (Id-630) M25
80	V/M26	V-belt (Id-650) M26
81	PDM170F.V2-81	Housing for Micro Switch (Rear Cover)
82	PDM170F.V2-82	Micro Switch w/o Housing
83	PDM170F.V2-83	Housing for Micro Switch (Front Cover)
84	PDM170F.V2-84	Self-tapping Screw

**NOTE:** It is our policy to continually improve products and as such we reserve the right to alter data, specifications and component parts without prior notice. There may be alternative versions of this product, please contact us should you require this information.

**IMPORTANT:** No liability is accepted for incorrect use of product. Spare parts must be fitted by a competent person

**WARRANTY:** Guarantee is 12 months from purchase date, proof of which will be required for any claim.

**Jack Sealey Ltd t/a Sealey Group**, Kempson Way, Suffolk Business Park, Bury St Edmunds, Suffolk, IP32 7AR UK  
**Jack Sealey (EU) Ltd t/a Sealey Group**, Farney Street, Carrickmacross, Co. Monaghan, A81 PK68 Ireland  
**Tel:** 01284 757500 • **Email:** sales@sealey.co.uk • **Web:** www.sealey.co.uk