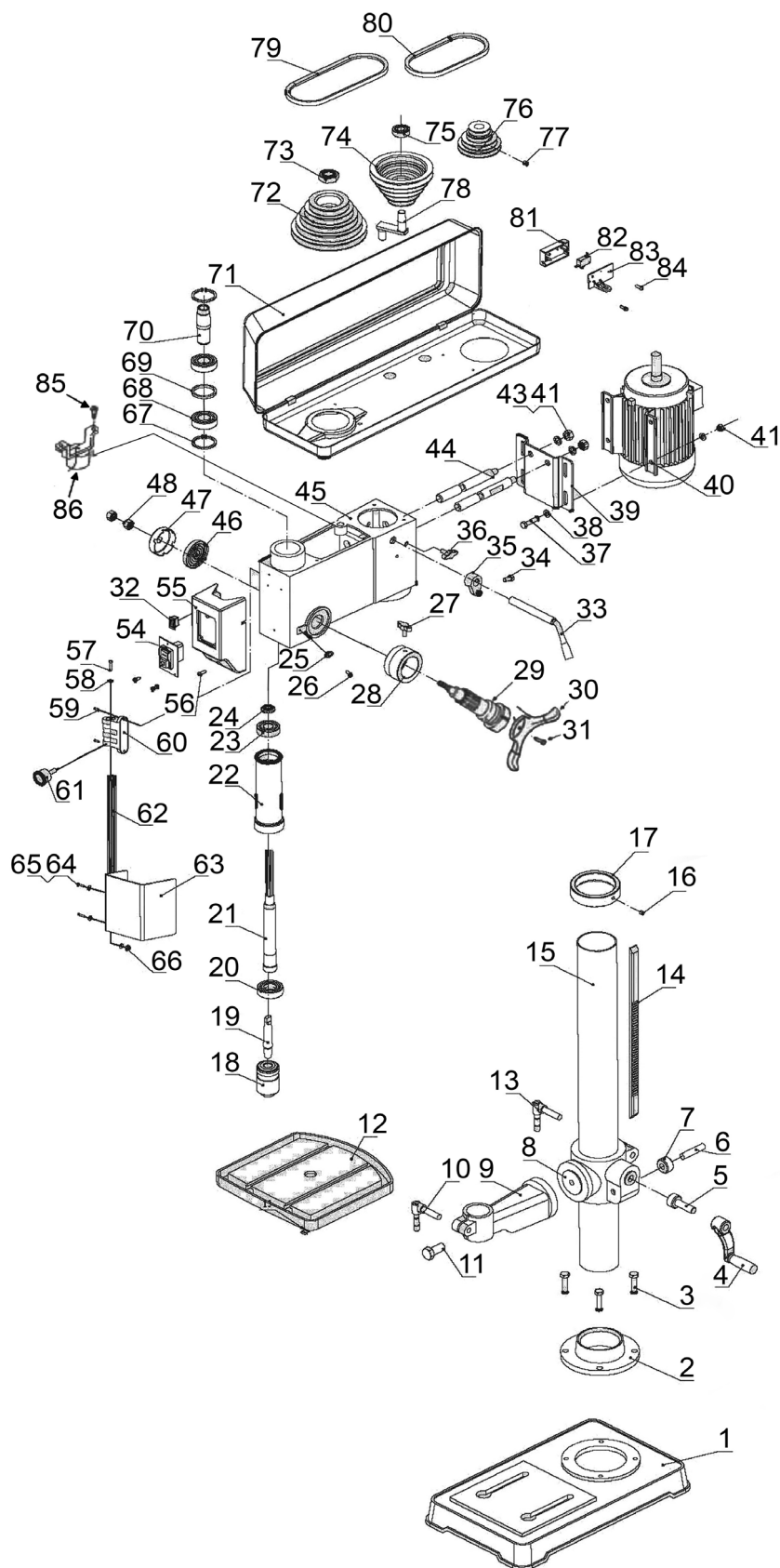


Parts Information: Premier Bench Mounting Pillar Drill 16-Speed 370W/230V Model No: PDM155B.V3



NOTE: It is our policy to continually improve products and as such we reserve the right to alter data, specifications and component parts without prior notice. There may be alternative versions of this product, please contact us should you require this information.

IMPORTANT: No liability is accepted for incorrect use of product. Spare parts must be fitted by a competent person

WARRANTY: Guarantee is 12 months from purchase date, proof of which will be required for any claim.

Jack Sealey Ltd t/a Sealey Group, Kempson Way, Suffolk Business Park, Bury St Edmunds, Suffolk, IP32 7AR UK

Jack Sealey (EU) Ltd t/a Sealey Group, Farney Street, Carrickmacross, Co. Monaghan, A81 PK68 Ireland

Tel: 01284 757500 • Email: sales@sealey.co.uk • Web: www.sealey.co.uk



TM

Parts Information: Premier Bench Mounting Pillar Drill 16-Speed 370W/230V Model No: PDM155B.V3

Item	Part No.	Description
1	PDM155B-V3-01	Base (Dark Grey)
2	PDM155B-V3-02	Support Column (Dark Grey)
3	SS1040.S	Hex Head Set Screw M10 X 40 Zinc
4	PDM155B.V2-04	Table Crank
5	PDM155B.V2-05	Elevation Worm
6	PDM155B.V2-06	Pin for Gear
7	PDM155B.V2-07	Helical Gear
8	PDM155B-V3-08	Table Bracket (Dark Grey)
9	PDM155B-V3-09	Table Arm (Dark Grey)
10	PDM155B.V2-10	Table Clamp
11	PDM155B.V2-11	Screw
12	PDM155B.V2-12	Table
13	PDM155B.V2-13	Locking Handle
14	PDM155B.V2-14	Rack
15	PDM155B-V3-15	Column Tube
16	GSM610.S	Grub Screw M6x10 (single)
17	PDM155B.V2-17	Column Collar
18	PDM155B.V2-18	Chuck
19	PDM155B.V2-19	Arbor
20	B/6204ZZ	Bearing 6204zz
21	PDM155B.V2-21	Spindle
22	PDM155B.V2-22	Quill Tube
23	B/6203ZZ	Bearing 6203ZZ
24	PDM155B.V2-24	Lock Nut
25	PDM155B.V2-25	Pointer
26	PDM155B.V2-26	Pan Head Screw
27	PDM155B.V2-27	Depth Screw Lock
28	PDM155B.V2-28	Ring Depth Stop w/Scale
29	PDM155B.V2-29	Hub
30	PDM155B.V2-30	Handle
31	SCB820.SB	Socket Cap Bolt M8 x 20mm Black
32	PDM155B.V2-32	On/Off Switch for Lamp
33	PDM155B.V2-33	Tensioning Handle
34	SCB815.SB	Socket Cap Bolt M8 x 15mm Black
35	PDM155B.V2-35	Adjusting Lever
36	PDM155B.V2-36	Motor Adjusting Knob
37	SS825.SB	Hex Head Set Screw M8 X 25 Black
38	FWM8.SB	Flat Washer M8 Black
39	PDM155B.V2-39	Motor Mount
40	PDM155B-V3-40	Motor (Black)
41	SN8.SB	Steel Nut M8 Black

Item	Part No.	Description
43	SWM8.SB	Spring Washer M8 Black
44	PDM155B.V2-44	Motor Bracket Support
45	PDM155B.V2-45	Head w/ Pointer and Trim
46	PDM155B.V2-46	Torsion Spring
47	PDM155B.V2-47	Spring Cap
48	PDM155B.V2-48	Spring Cap Nut
54	PDM155B.V2-54	Switch, On/Off Press Button
55	PDM155B.V2-55	Switch Box
56	MSP58.SB	Machine Screw Pan Head Phillips M5 x 8mm Black
57	PDM155B.V2-57	Hex Screw
58	PDM155B.V2-58	Big Washer
59	PDM155B.V2-59	Pan Head Screw
60	PDM155B.V2-60	Micro Switch Assembly
61	PDM155B.V2-61	Lock Button
62	PDM155B.V2-62	Chuck Guard Rod (300mm)
63	PDM155B.V2-63	Chuck Guard
64	PDM155B.V2-64	Washer
65	PDM155B.V2-65	Pan Head Screw
66	PDM155B.V2-66	Self-locking Nut
67	PDM155B.V2-67	Retaining Ring
68	B/6204ZZ	Bearing 6204zz
69	PDM155B.V2-69	Bearing Spacer
70	PDM155B.V2-70	Pulley Insert
71	PDM155B.V2-71	Pulley Guard
72	PDM155B.V2-72	Spindle Pulley
73	PDM155B.V2-73	Pulley Nut
74	PDM155B.V2-74	Center Pulley
75	B/6202ZZ	Bearing 6202zz
76	PDM155B.V2-76	Motor Pulley
77	GSM815.S	Grub Screw M8x15 (single)
78	PDM155B.V2-78	Idler Pivot
79	V/M25	V-Belt (Id-630) M25
80	V/M26	V-Belt (Id-650) M26
81	PDM155B.V2-81	Housing Cover for Micro Switch (Back)
82	PDM155B.V2-82	Micro Switch w/o Housing
83	PDM155B.V2-83	Housing Cover for Micro Switch (Front)
84	PDM155B.V2-84	Self-tapping Screw
85	PDM155B.V2-85	Pan Head Screw
86	PDM155B.V2-86	Lamp Socket

NOTE: It is our policy to continually improve products and as such we reserve the right to alter data, specifications and component parts without prior notice. There may be alternative versions of this product, please contact us should you require this information.

IMPORTANT: No liability is accepted for incorrect use of product. Spare parts must be fitted by a competent person

WARRANTY: Guarantee is 12 months from purchase date, proof of which will be required for any claim.

Jack Sealey Ltd t/a Sealey Group, Kempson Way, Suffolk Business Park, Bury St Edmunds, Suffolk, IP32 7AR UK

Jack Sealey (EU) Ltd t/a Sealey Group, Farney Street, Carrickmacross, Co. Monaghan, A81 PK68 Ireland

Tel: 01284 757500 • **Email:** sales@sealey.co.uk • **Web:** www.sealey.co.uk