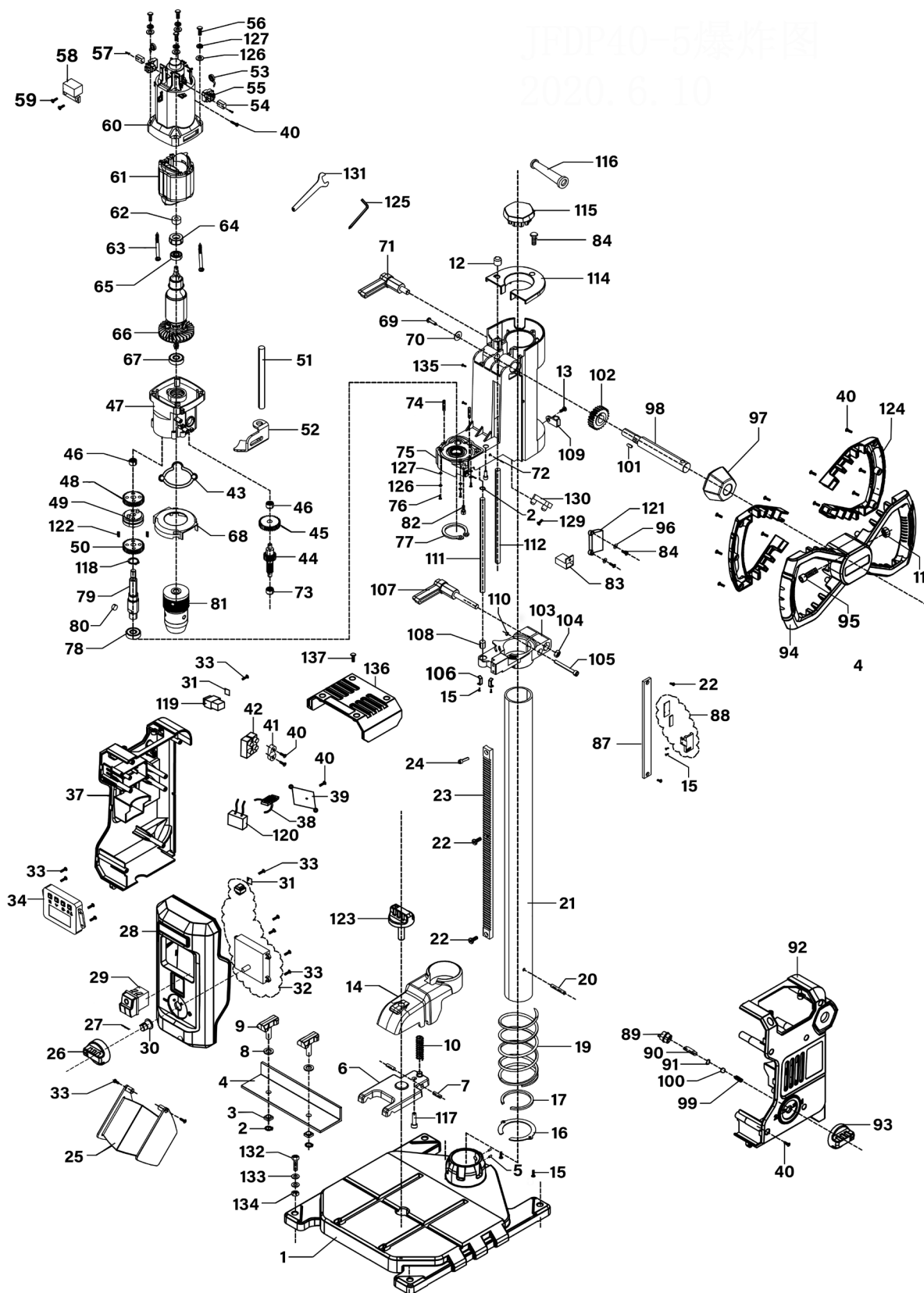


Parts Information: Bench Mounting Pillar Drill with Digital Display & Laser Guide 720W Model No: PDM10B



NOTE: It is our policy to continually improve products and as such we reserve the right to alter data, specifications and component parts without prior notice. There may be alternative versions of this product, please contact us should you require this information.

IMPORTANT: No liability is accepted for incorrect use of product. Spare parts must be fitted by a competent person

WARRANTY: Guarantee is 12 months from purchase date, proof of which will be required for any claim.

Jack Sealey Ltd t/a Sealey Group, Kempson Way, Suffolk Business Park, Bury St Edmunds, Suffolk, IP32 7AR UK

Jack Sealey (EU) Ltd t/a Sealey Group, Farney Street, Carrickmacross, Co. Monaghan, A81 PK68 Ireland

Tel: 01284 757500 • Email: sales@sealey.co.uk • Web: www.sealey.co.uk



Parts Information:

Bench Mounting Pillar Drill with Digital Display & Laser Guide 720W

Model No: PDM10B

Item	Part No.	Description
1	PDM10B-01	Aluminium Base
2	PDM10B-02	Split Washer
3	PDM10B-03	Square Nut M8
4	PDM10B-04	Guide Plate
5	PDM10B-05	Base Screw M8x8
6	PDM10B-06	Splint
7	PDM10B-07	Splint Locating Pin
8	PDM10B-08	Washer (Ø9 x Ø18 x 1.2)
9	PDM10B-09	Splint Tightening Knob
10	PDM10B-10	Splint Spring
11	SN6.S	Steel Nut M6 Zinc
12	PDM10B-12	Locking Key
13	MSP410.S	Machine Screw Pan Head Phillips M4 X 10mm
14	PDM10B-14	Positioning Locking Base
15	MSP48.S	Machine Screw Pan Head Phillips M4 X 8mm
16	PDM10B-16	Pressing Plate Ring
17	PDM10B-17	Split Washer
19	PDM10B-19	Column Spring
20	PDM10B-20	Locating Pin for Column
21	PDM10B-21	Column
22	SCB48.SB	Socket Cap Bolt M4 x 8mm Black
23	PDM10B-23	Vertical Rack
24	SCB48.SB	Socket Cap Bolt M4 x 8mm Black
25	PDM10B-25	Protection Guard
26	PDM10B-26	Electronic Speed Control Knob
27	PDM10B-27	Spring Plate
28	PDM10B-28	Front Cover
29	PDM10B-29	Main Switch
30	PDM10B-30	Speed Adjustable Knob Sleeve
31	PDM10B-31	Lead Fixed Plate
32	PDM10B-32	Electronic Speed Control Ass'y
33	PDM10B-33	Pan Head Tapping Screw ST2.9 x 10
34	PDM10B-34	LCD Display
37	PDM10B-37	Side Casing, Left
38	PDM10B-38	Inductance (c/w part PDM10B-120)
39	PDM10B-39	Inductance Press Plate
40	PDM10B-40	Pan Head Tapping Screw ST4 x 12
41	PDM10B-41	Cable Grip
42	PDM10B-42	Wire Terminal Block
43	PDM10B-43	Seal Gasket
44	PDM10B-44	Middle Shaft Gearing (c/w part 45)
45	PDM10B-45	Gear (Large)

Item	Part No.	Description
46	B/HK0808	Needle Bearing HK0808
47	PDM10B-47	Gearbox
48	PDM10B-48	Gear (High Speed)
49	PDM10B-49	Clutch Gear Assembly
50	PDM10B-50	Gear (Low Speed)
51	PDM10B-51	Support Pin
52	PDM10B-52	Gear Shifter Plate
53	PDM10B-53	Carbon Brush Spring
54	PDM10B-54	Carbon Brush
55	PDM10B-55	Carbon Brush Holder
56	MSP530.S	Machine Screw Pan Head Phillips M5 X 30mm
57	PDM10B-57	Pan Head Tapping Screw ST2.9 x 8
58	PDM10B-58	Sensor
59	PDM10B-59	Pan Head Tapping Screw ST3 x 6
60	PDM10B-60	Housing for Stator
61	PDM10B-61	Stator
62	PDM10B-62	Magnetic Ring
63	PDM10B-63	Pan Head Tapping Screw ST3.9 x 60
64	PDM10B-64	Bearing Sleeve
65	B/607ZZ	Bearing 607zz
66	PDM10B-66	Rotor
67	B/609ZZ	Bearing 609zz
68	PDM10B-68	Air Flow Guard
69	MSP610.S	Machine Screw Pan Head Phillips M6 X 10mm
70	PDM10B-70	Washer (Ø16 x Ø6.4 x 1)
71	PDM10B-71	Locking Handle Knob
72	SCB45.SB	Socket Cap Bolt M4 x 5mm Black
73	PDM10B-73	Oil Bearing (6 x Ø10 x 8)
74	PDM10B-74	Gearbox Locating Pin Ø5 x 14
75	PDM10B-75	Top Support Case
76	MSP518.S	Machine Screw Pan Head Phillips M5 x 18mm
77	PDM10B-77	External Circlip
78	B/6002ZZ	Bearing 6002zz
79	PDM10B-79	Output Shaft
80	PDM10B-80	Magnetic Key Ø6
81	PDM10B-81	Drill Chuck (1/2"-20UNF)
82	PDM10B-82	Laser Head
83	PDM10B-83	Speed Transmitter (c/w part 121)
84	MSP412.S	Machine Screw Pan Head Phillips M4 X 12mm
87	PDM10B-87	Caliper
88	PDM10B-88	Holder for Circuit Board Caliper
89	PDM10B-89	Speed Control Knob (Inner)

NOTE: It is our policy to continually improve products and as such we reserve the right to alter data, specifications and component parts without prior notice. There may be alternative versions of this product, please contact us should you require this information.

IMPORTANT: No liability is accepted for incorrect use of product. Spare parts must be fitted by a competent person

WARRANTY: Guarantee is 12 months from purchase date, proof of which will be required for any claim.

Jack Sealey Ltd t/a Sealey Group, Kempson Way, Suffolk Business Park, Bury St Edmunds, Suffolk, IP32 7AR UK
Jack Sealey (EU) Ltd t/a Sealey Group, Farney Street, Carrickmacross, Co. Monaghan, A81 PK68 Ireland
Tel: 01284 757500 • **Email:** sales@sealey.co.uk • **Web:** www.sealey.co.uk



Parts Information:
**Bench Mounting Pillar Drill with Digital
 Display & Laser Guide 720W
 Model No: PDM10B**

Item	Part No.	Description
90	PDM10B-90	Speed Control Knob Pin
91	PDM10B-91	Shaft Ring Ø12
92	PDM10B-92	Side Casing, Right
93	PDM10B-93	Speed Control Knob
94	PDM10B-94	Handwheel (c/w part 124)
95	PDM10B-95	Socket Head Screw M6
96	FWM4.S	Flat Washer M4
97	PDM10B-97	Handwheel Cushion
98	PDM10B-98	Lift Shaft Pin
99	PDM10B-99	Spring
100	SB-4.0	Steel Ball 4.0mm
101	PDM10B-101	Flat Key (4x4x10)
102	PDM10B-102	Lift Shaft Gear
103	PDM10B-103	Fixed Base for Column Top
104	SN8.S	Steel Nut M8 Zinc
105	SS645.S	Hex Head Set Screw M6 X 45 Zinc
106	PDM10B-106	Spring Plate
107	PDM10B-107	Locking Handle Knob for Fixed Base
108	PDM10B-108	Locating Bearing
109	PDM10B-109	Strain Relief Clamp
110	SN6.S	Steel Nut M6 Zinc
111	PDM10B-111	Support Locating Shaft for Bracket
112	PDM10B-112	Sliding Bar for Bracket Adjustment

Item	Part No.	Description
114	PDM10B-114	Support Top Cover
115	PDM10B-115	Stand Column Cover
116	PDM10B-116	Cable Sleeve
117	PDM10B-117	Cylindrical Head Socket Set Screw M6x30
118	PDM10B-118	External Circlip
119	PDM10B-119	Buckle for Locking Wire
120	PDM10B-120	Capacitor 0.1uF
121	PDM10B-121	Holder for PCB
122	PDM10B-122	Key for Clutch Gear Assembly
123	PDM10B-123	Locking Knob for Positioning Base
124	PDM10B-124	Handwheel Cover
125	PDM10B-125	Hex Wrench
126	SWM5.S	Spring Washer M5 Zinc
127	FWM5.S	Flat Washer M5 Zinc
129	PDM10B-129	Pan Head Tapping Screw ST4 x 8
130	PDM10B-130	LED Lamp
131	PDM10B-131	Open-End Wrench
132	SS850.S	Hex Head Set Screw M8 X 50 Zinc
133	FWM8.S	Flat Washer M8 Zinc
134	SN8.S	Steel Nut M8 Zinc
135	PDM10B-135	Pan Head Tapping Screw ST4 x 14
136	PDM10B-136	Carbon Brush Cover
137	PDM10B-129	Pan Head Tapping Screw ST4 x 8

NOTE: It is our policy to continually improve products and as such we reserve the right to alter data, specifications and component parts without prior notice. There may be alternative versions of this product, please contact us should you require this information.

IMPORTANT: No liability is accepted for incorrect use of product. Spare parts must be fitted by a competent person

WARRANTY: Guarantee is 12 months from purchase date, proof of which will be required for any claim.

Jack Sealey Ltd t/a Sealey Group, Kempson Way, Suffolk Business Park, Bury St Edmunds, Suffolk, IP32 7AR UK
Jack Sealey (EU) Ltd t/a Sealey Group, Farney Street, Carrickmacross, Co. Monaghan, A81 PK68 Ireland
Tel: 01284 757500 • **Email:** sales@sealey.co.uk • **Web:** www.sealey.co.uk