

NOTE: It is our policy to continually improve products and as such we reserve the right to alter data, specifications and component parts without prior notice.

IMPORTANT: No liability is accepted for incorrect use of product.

WARRANTY: Guarantee is 12 months from purchase date, proof of which will be required for any claim.



Parts Information:
**Diesel Pressure Washer 300bar 15ltr/min
 10hp
 Model No: PCDM3600.V2**

Item	Part No.	Description
1	SS612.S	HEX HEAD SET SCREW M6x12mm SINGLE
2	PCDM3600.02	PUMP COVER
3	PCDM3600.03	O-RING
4	PCDM3600.04	PIN
5	PCDM3600.05	ENGINE OIL PUMP UNIT
6	PCDM3600.06	DRIVE GEAR
7	PCDM3600.07	WEIGHT
8	PCDM3600.08	PIN
9	PCDM3600.09	O-RING
10	PCDM3600.10	OIL FILTER ASSEMBLY
11	SFS616.S	HEX HEAD FLANGE BOLT M6x16 SINGLE
12	PCDM3600.12	DRAIN PLUG SCREW
13	PCDM3600.13	PLASTIC WASHER
14	PCDM3600.48	OIL SEAL (50x35x8)
15	PCDM3600.15	CYLINDER BLOCK
16	B/7941-8	NEEDLE BEARING 7941-8
17	PCDM3600.17	O-RING
18	PCDM3600.18	OIL DIPSTICK
19	PCDM3600.19	FUEL CONTROLLER ASSEMBLY
20	NLN10.S	NYLOC NUT M10 ZINC (SINGLE)
21	PCDM3600.21	STUD (SHORT)
22	PCDM3600.22	STUD (LONG)
23	PCDM3600.23	COPPER GASKET
24	PCDM3600.24	GASKET
25	PCDM3600.25	SEAL PLATE
26	PCDM3600.26	NUT
27	FWM8.S	FLAT WASHER M8 SINGLE
28	PCDM3600.28	RETAINER
29	FN6.S	FLANGE NUT SERRATED M6 ZINC (SINGLE)
30	B/HK1512	NEEDLE BEARING HK1512
31	PCDM3600.31	THRUST PLATE
32	PCDM3600.32	FLANGE BOLT M8X13
33	B/6308	BEARING 6308
34	PCDM3600.34	SHOCK ABSORBER SEAT
35	PCDM3600.35	AIR COVER
36	PCDM3600.36	SHOCK ABSORBER
37	PCDM3600.37	SHEATH
38	SFS612.S	HEX HEAD FLANGE BOLT M6x12 SINGLE
39	PCDM3600.39	CYLINDER HEAD STUD BOLT (SHORT) M10X105
40	PCDM3600.40	CYLINDER HEAD STUD BOLT (LONG) M10X118
41	PCDM3600.41	RING
42	PCDM3600.42	CYLINDER HEAD SEAL

Item	Part No.	Description
43	PCDM3600.43	CYLINDER HEAD GASKET
44	SN10.S	STEEL NUT M10 ZINC DIN934(SINGLE)
45	PCDM3600.45	CYLINDER HEAD NUT
46	PCDM3600.46	CRANKCASE COVER WASHER
47	PCDM3600.47	BEARING SLEEVE
48	PCDM3600.48	OIL SEAL (50x35x8)
49	PCDM3600.49	OIL INDICATOR
50	SFS834.S	HEX HEAD FLANGE BOLT M8x34 SINGLE
51	PCDM3600.51	CRANKCASE COVER
52	PCDM3600.52	PLUNGER
53	PCDM3600.53	OIL PLUG
54	B/6203	BEARING 6203
55	PCDM3600.55	BALANCE SHAFT
56	PCDM3600.56	KEY
57	PCDM3600.57	TIMING GEAR
58	PCDM3600.58	SET BOLT
59	PCDM3600.59	GASKET
60	PCDM3600.60	GASKET
61	PCDM3600.61	CRANKSHAFT TIMING GEAR
62	PCDM3600.62	KEY
63	PCDM3600.63	CRANKSHAFT
64	SB-6.4	STEEL BALL 6.4mm
65	PCDM3600.65	KEY
66	PCDM3600.66	DRIVE SHAFT
67	PCDM3600.67	KEY
68	PCDM3600.68	FLYWHEEL TOOTH
69	PCDM3600.69	FLYWHEEL
70	PCDM3600.70	FLYWHEEL GASKET
71	PCDM3600.71	FLANGE NUT BLACK
72	PCDM3600.72	RATCHET REEL
73	SFS612.S	HEX HEAD FLANGE BOLT M6x12 SINGLE
74	PCDM3600.74	RING ASSEMBLY
77	PCDM3600.77	PISTON
78	PCDM3600.78	PISTON PIN (c/w RING)
80	PCDM3600.80	CONNECTING ROD ASS'Y
84	PCDM3600.84	INTAKE PIPE
85	PCDM3600.85	CYLINDER COVER COMPLETE
86	PCDM3600.86	INTAKE VALVE
87	PCDM3600.87	EXHAUST VALVE
88	PCDM3600.88	INLET VALVE SEAT
89	PCDM3600.89	EXHAUST VALVE SEAT
90	PCDM3600.90	STUD

NOTE: It is our policy to continually improve products and as such we reserve the right to alter data, specifications and component parts without prior notice.

IMPORTANT: No liability is accepted for incorrect use of product.

WARRANTY: Guarantee is 12 months from purchase date, proof of which will be required for any claim.

Sealey Group, Kempson Way, Suffolk Business Park, Bury St Edmunds, Suffolk. IP32 7AR



01284 757500



01284 703534



sales@sealey.co.uk



www.sealey.co.uk



Parts Information:
**Diesel Pressure Washer 300bar 15ltr/min
 10hp
 Model No: PCDM3600.V2**

Item	Part No.	Description
91	PCDM3600.91	WASHER FOR EXHAUST PIPE
--	PCDM3600.85	CYLINDER COVER COMPLETE (NOT SHOWN)
93	PCDM3600.93	PIN
94	PCDM3600.94	VALVE SPRING GASKET
95	PCDM3600.95	OIL SEAL (13x8x3)
96	PCDM3600.96	VALVE SPRING
97	PCDM3600.97	VALVE SPRING SEAT
98	PCDM3600.98	VALVE RETAINING CLIP
99	PCDM3600.99	VALVE ADJUSTING CUSHION
100	PCDM3600.100	ROCKER ARM ASSEMBLY
--	SCB1055.SB	SOCKET CAP BOLT BLACK M10x55 (NOT SHOWN)
--	PCDM3600.100	ROCKER ARM ASSEMBLY (NOT SHOWN)
--	FN6.S	FLANGE NUT SERRATED M6 ZINC (SINGLE) (NOT SHOWN)
107	PCDM3600.107	VALVE RETAINER
108	PCDM3600.108	GASKET
109	PCDM3600.109	INSULATOR
110	PCDM3600.110	STUD
111	PCDM3600.111	STUD
112	SFS622.S	HEX HEAD FLANGE BOLT M6x22 SINGLE
113	PCDM3600.113	INLET PIPE
114	PCDM3600.114	BOLT M6X26
115	PCDM3600.115	FELT WASHER
116	PCDM3600.116	AIR CLEANER ASS'Y
132	PCDM3600.132	CYLINDER HEAD COVER ASS'Y
135	PCDM3600.135	FLANGE BOLT M6X70
136	PCDM3600.136	CUSHION
137	PCDM3600.137	FAN COVER
138	PCDM3600.138	CUSHION SHEATH
139	PCDM3600.139	SHEATH

Item	Part No.	Description
140	PCDM3600.140	GASKET
141	SCB622.SB	SOCKET HEAD CAP SCREW M6x22 BLACK
142	PCDM3600.142	FLANGE NUT ZINC YELLOW
143	PCDM3600.143	STARTER ASS'Y
155	PCDM3600.155	VALVE PUSH ROD ASS'Y
156	PCDM3600.156	VALVE TAPPET
157	PCDM3600.157	CAMSHAFT TIMING GEAR
158	PCDM3600.158	KEY
159	PCDM3600.159	CAMSHAFT
160	PCDM3600.160	MUFFLER ASS'Y
161	PCDM3600.161	FLANGE BOLT M8X12
162	FWM8.S	FLAT WASHER M8 SINGLE
163	SWM8.S	SPRING WASHER M8 ZINC (SINGLE)
164	PCDM3600.164	FLANGE BOLT M10X56
165	PCDM3600.165	FLANGE BOLT M8X46C
166	PCDM3600.166	BOLT M8X48
167	SWM8.S	SPRING WASHER M8 ZINC (SINGLE)
168	PCDM3600.168	UPPER SUPPORT FOR FUEL TANK
169	PCDM3600.169	CUSHION
170	PCDM3600.170	FUEL RETURN PIPE
171	PCDM3600.171	CLIP
172	PCDM3600.172	NYLON WASHER
173	PCDM3600.173	BOLT M12X15
174	PCDM3600.174	LOWER SUPPORT FOR FUEL TANK
175	PCDM3600.175	BOLT
176	FN6.S	FLANGE NUT SERRATED M6 ZINC (SINGLE)
177	PCDM3600.177	FUEL TANK SWITCH ASS'Y
178	PCDM3600.178	O-RING
179	PCDM3600.179	FUEL PIPE
180	PCDM3600.180	CLIP

NOTE: It is our policy to continually improve products and as such we reserve the right to alter data, specifications and component parts without prior notice.

IMPORTANT: No liability is accepted for incorrect use of product.

WARRANTY: Guarantee is 12 months from purchase date, proof of which will be required for any claim.

Sealey Group, Kempson Way, Suffolk Business Park, Bury St Edmunds, Suffolk. IP32 7AR



01284 757500



01284 703534



sales@sealey.co.uk



www.sealey.co.uk



Parts Information:
**Diesel Pressure Washer 300bar 15ltr/min
10hp
Model No: PCDM3600.V2**

Item	Part No.	Description
181	PCDM3600.181	FUEL FILTER RUBBER WASHER
182	PCDM3600.182	ELEMENT ASS'Y
183	PCDM3600.183	FUEL PIPE
184	PCDM3600.184	FUEL TANK
185	PCDM3600.185	FUEL FILTER
186	PCDM3600.186	FUEL TANK CAP
187	PCDM3600.187	CUSHION
188	PCDM3600.188	FUEL INJECTION VALVE ASS'Y
189	PCDM3600.189	FUEL INJECTION PUMP ASS'Y
190	PCDM3600.190	STARTING MOTOR ASS'Y
191	SS1035.S	HEX HEAD SET SCREW M10x35mm SINGLE
192	PCDM3600.192	SPRING GASKET
193	FWM10.S	FLAT WASHER M10 SINGLE
194	PCDM3600.194	CONTROL HANDLE ASS'Y
198	PCDM3600.198	RETAINER
199	PCDM3600.199	ENGINE SHUT-OFF HANDLE ASS'Y
--	PCDM3600.116	AIR CLEANER ASS'Y (NOT SHOWN)
208	PCDM3600.208	LEVER SHAFT ASS'Y
212	PCDM3600.212	STATOR / ROTOR ASS'Y
223	SFS618.S	HEX HEAD FLANGE BOLT M6x18 SINGLE
224	PCDM3600.224	SWITCH PLATE

Item	Part No.	Description
225	FWM8.S	FLAT WASHER M8 SINGLE
226	PCDM3600.161	FLANGE BOLT M8X12
227	PCDM3600.227	STARTING KEY
228	PCDM3600.228	STARTING KEY ASS'Y
229	PCDM3600.229	WIRE ASS'Y
230	680-4356	RELAY
231	PCDM3600.231	RECTIFIER
232	RS125.12	BATTERY 22AH
233	PCDM3600.233	LEAD WIRE (BLK)
234	PCDM3600.234	LEAD WIRE (RED)
235	PCDM3600.235	FLANGE BOLT M5X12
236	PCDM3600.236	GASKET
237	FN5.S	FLANGE NUT SERRATED M5 ZINC (SINGLE)
238	PCDM3600.238	CONNECTING WIRE
239	PCDM3600.239	MAGNET
240	PCDM3600.240	SCREW
241	PCDM3600.241	SCREW
242	FN5.S	FLANGE NUT SERRATED M5 ZINC (SINGLE)
243	MSP48.S	MACHINE SCREW PAN HEAD PHILLIPS M4x8mm
244	FWM3.S	FLAT WASHER M3 SINGLE
245	PCDM3600.245	GASKET

NOTE: It is our policy to continually improve products and as such we reserve the right to alter data, specifications and component parts without prior notice.

IMPORTANT: No liability is accepted for incorrect use of product.

WARRANTY: Guarantee is 12 months from purchase date, proof of which will be required for any claim.

Sealey Group, Kempson Way, Suffolk Business Park, Bury St Edmunds, Suffolk. IP32 7AR



01284 757500



01284 703534



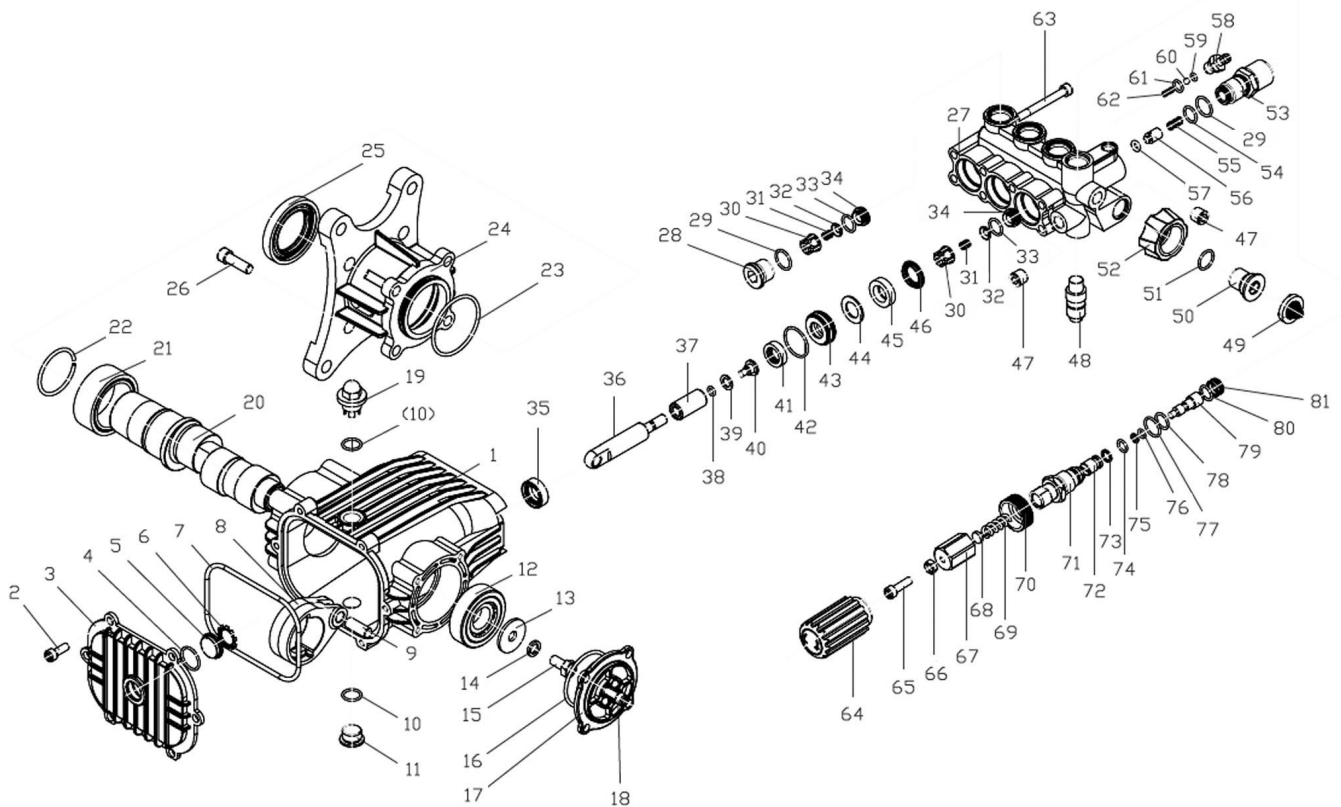
sales@sealey.co.uk



www.sealey.co.uk



Parts Information:
Diesel Pressure Washer 300bar 15ltr/min
10hp
Model No: PCDM3600.V2



NOTE: It is our policy to continually improve products and as such we reserve the right to alter data, specifications and component parts without prior notice.

IMPORTANT: No liability is accepted for incorrect use of product.

WARRANTY: Guarantee is 12 months from purchase date, proof of which will be required for any claim.

Sealey Group, Kempson Way, Suffolk Business Park, Bury St Edmunds, Suffolk. IP32 7AR



01284 757500



01284 703534



sales@sealey.co.uk



www.sealey.co.uk



Parts Information:
**Diesel Pressure Washer 300bar 15ltr/min
 10hp
 Model No: PCDM3600.V2**

Item	Part No.	Description
1	PCDM3600V2P01	CRANKCASE
2	PCDM3600V2P02	SOCKET HEAD CAP SCREW M8x16
3	PCDM3600V2P03	BACK COVER
4	PCDM3600V2P04	O- RING 18x1.8
5	PCDM3600V2P05	PLUG
6	PCDM3600V2P06	M14 EXT TOOTH WASHER BLACK
7	PCDM3600V2P07	O-RING 97.5x3.55
8	PCDM3600V2P08	CONNECTING ROD
9	PCDM3600V2P09	CONNECTING ROD PIN
10	PCDM3600V2P10	O-RING 13.2x1.8
11	PCDM3600V2P11	BULKHEAD
12	B/NJ304EM	BEARING NJ304EM
13	SCB816.S	SOCKET CAP SCREW ZINC M8X16
14	SWM8.S	SPRING WASHER M8 ZINC (SINGLE)
15	PCDM3600V2P15	BOLT M8x16
16	PCDM3600V2P16	O-RING 45x2.65
17	PCDM3600V2P17	COVER
18	SCB816.S	SOCKET CAP SCREW ZINC M8X16
19	PCDM3600V2P19	BREATH PLUG
20	PCDM3600V2P20	CRANKSHAFT
21	B/NK140/20	BEARING NK140/20
22	PCDM3600V2P22	BLOCK RING
23	PCDM3600V2P23	O-RING 50x2.65
24	PCDM3600V2P24	CONNECTING FLANGE
25	PCDM3600V2P25	OIL SEAL FB 38x58x8
26	SCB825.S	SOCKET CAP BOLT ZINC M8X25
27	PCDM3600V2P27	PUMP BODY
28	PCDM3600V2P28	BULKHEAD
29	PCDM3600V2P77	O-RING 15x1.8
30	PCDM3600V2P30	VALVE COVER
31	PCDM3600V2P31	VALVE SPRING
32	PCDM3600V2P32	O-RING 11.8x1.8
33	PCDM3600V2P33	VALVE PLATE
34	PCDM3600V2P34	VALVE SEAT
35	PCDM3600V2P35	OIL SEAL 15x24x7
36	PCDM3600V2P36	PLUNGER
37	PCDM3600V2P37	PLUNGER
38	PCDM3600V2P38	O-RING 5x1.8
39	PCDM3600V2P39	COPPER WASHER
40	PCDM3600V2P40	BOLT
41	PCDM3600V2P41	SEAL RING 14x21x5

Item	Part No.	Description
42	PCDM3600V2P42	O-RING 24.3x1.8
43	PCDM3600V2P43	SEAL SEAT
44	PCDM3600V2P44	SEAL RING
45	PCDM3600V2P45	SEAL RING
46	PCDM3600V2P46	SEAL RING (C)
47	PCDM3600V2P47	PLUG SCREW
48	PCDM3600V2P48	THERMAL PROTECTION
49	PCDM3600V2P49	INLET FILTER
50	PCDM3600V2P50	INLET CONNECTOR
51	PCDM3600V2P51	O-RING
52	PCDM3600V2P52	PLASTIC NUT
53	PCDM3600V2P53	OUTLET CONNECTOR
54	PCDM3600V2P54	O-RING 11.8x1.8
55	PCDM3600V2P55	VALVE SPRING
56	PCDM3600V2P56	VALVE CORE
57	PCDM3600V2P57	O-RING 4.65x2.65
58	PCDM3600V2P58	INJECTOR
59	PCDM3600V2P59	O-RING 3.65x1.78
60	SB-4.7	STEEL BALL 4.7mm
61	PCDM3600V2P61	O-RING 7.65x1.78
62	PCDM3600V2P62	INJECTOR SPRING
63	PCDM3600V2P63	BOLT M6X55-12.9
64	PCDM3600V2P64	REGULATING PRESSURE HANDLE GRIP
65	SCB620.S	SOCKET CAP BOLT ZINC M6X20
66	SN6.S	STEEL NUT M6 ZINC DIN934 (SINGLE)
67	PCDM3600V2P67	VALVE CAP
68	PCDM3600V2P68	SPRING SEAT
69	PCDM3600V2P69	REGULATING PRESSURE SPRING
70	PCDM3600V2P70	NUT
71	PCDM3600V2P71	VALVE BODY
72	PCDM3600V2P72	VALVE NUT
73	PCDM3600V2P73	BLOCK RING
74	3000LJ.V2-P20	O-RING (8x1.8)
75	PCDM3600V2P75	BLOCK RING
76	PCDM3600V2P76	O-RING 5x1.8
77	PCDM3600V2P77	O-RING 15x1.8
78	PCDM3600V2P78	O-RING 11.8x1.8
79	PCDM3600V2P79	VALVE PIN
80	PCDM3600V2P80	O-RING 16x1.8
81	PCDM3600V2P81	REGULATING PRESSURE VALVE SEAT

NOTE: It is our policy to continually improve products and as such we reserve the right to alter data, specifications and component parts without prior notice.

IMPORTANT: No liability is accepted for incorrect use of product.

WARRANTY: Guarantee is 12 months from purchase date, proof of which will be required for any claim.

Sealey Group, Kempson Way, Suffolk Business Park, Bury St Edmunds, Suffolk. IP32 7AR



01284 757500



01284 703534



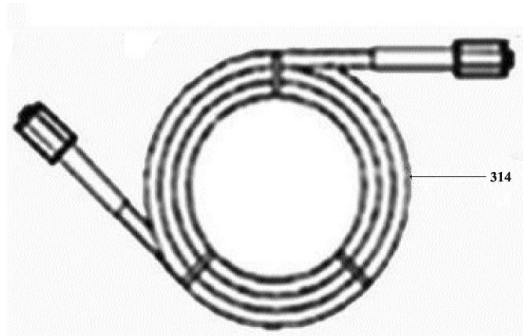
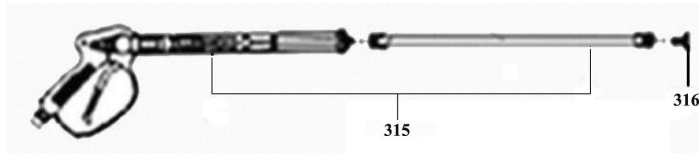
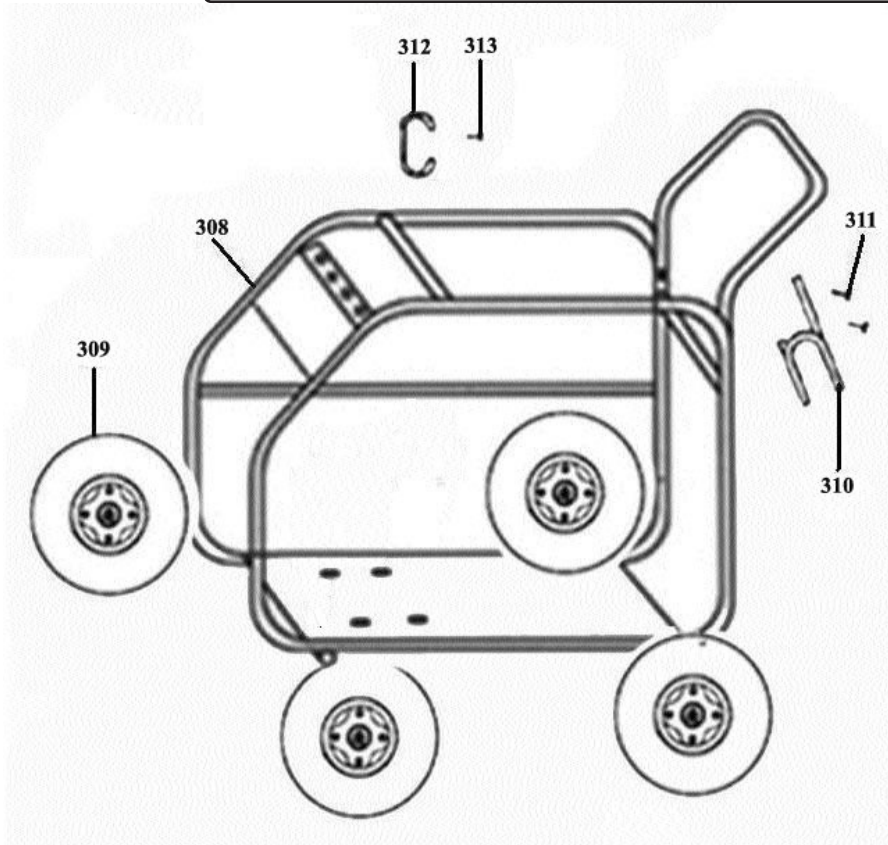
sales@sealey.co.uk



www.sealey.co.uk



Parts Information:
Diesel Pressure Washer 300bar 15ltr/min
10hp
Model No: PCDM3600.V2



NOTE: It is our policy to continually improve products and as such we reserve the right to alter data, specifications and component parts without prior notice.

IMPORTANT: No liability is accepted for incorrect use of product.

WARRANTY: Guarantee is 12 months from purchase date, proof of which will be required for any claim.

Sealey Group, Kempson Way, Suffolk Business Park, Bury St Edmunds, Suffolk. IP32 7AR



01284 757500



01284 703534



sales@sealey.co.uk



www.sealey.co.uk



Parts Information:
**Diesel Pressure Washer 300bar 15ltr/min
10hp
Model No: PCDM3600.V2**

Item	Part No.	Description
308	PCDM3600.308	FRAME
309	PCM2500.162	WHEEL 4.10/3.50-4 (2PI)
310	PCDM3600.310	HOOK FOR HOSE
311	SCB645.SB	SOCKET HEAD CAP SCREW M6x45 BLACK
312	PCDM3600.312	HOOK FOR GUN
313	SCB640.SB	SOCKET HEAD CAP SCREW M6x40 BLACK
314	PCDM3600.314	HIGH PRESSURE HOSE
--	PCDM3600.314A	CONNECTOR (MALE) (NOT SHOWN)
--	PCDM3600.300A	QUICK RELEASE COUPLING 16MM (NOT SHOWN)
315	PCDM3600.315N	GUN & LANCE (NEW TYPE)
--	PCDM3600.315A	QUICK RELEASE COUPLING 11MM (NOT SHOWN)
--	PCDM3600.315C	CONNECTOR MALE (NOT SHOWN)
--	PCDM3600.315N	GUN & LANCE (NEW TYPE) (NOT SHOWN)

Item	Part No.	Description
316	PCDM3600.316	NOZZLE (SET OF 5)
--	PCDM3600.317	BATTERY BOX COVER (NOT SHOWN)
--	SFS512.S	HEX HEAD FLANGE BOLT M5x12 SINGLE (NOT SHOWN)
--	NLN8.S	NYLOC NUT M8 ZINC DIN 985 (SINGLE) (NOT SHOWN)
--	PCDM3600.320	AXLE (SET OF 4) (NOT SHOWN)
--	PCDM3600.321	GASKET (NOT SHOWN)
--	PCDM3600.322	O-RING (NOT SHOWN)
--	PCDM3600.323	REGULATOR (NOT SHOWN)
--	PCDM3600.324	STATOR (NOT SHOWN)
--	PCDM3600.300A	QUICK RELEASE COUPLING 16MM (NOT SHOWN)
--	PCDM3600V2CV	COMPLETE VALVE (NOT SHOWN)
--	PCDM3600V2P	PUMP (w/o HEAD) (NOT SHOWN)
--	PCDM3600.325	GASKET - FUEL TANK COCK (NOT SHOWN)

NOTE: It is our policy to continually improve products and as such we reserve the right to alter data, specifications and component parts without prior notice.

IMPORTANT: No liability is accepted for incorrect use of product.

WARRANTY: Guarantee is 12 months from purchase date, proof of which will be required for any claim.

Sealey Group, Kempson Way, Suffolk Business Park, Bury St Edmunds, Suffolk. IP32 7AR



01284 757500



01284 703534



sales@sealey.co.uk



www.sealey.co.uk