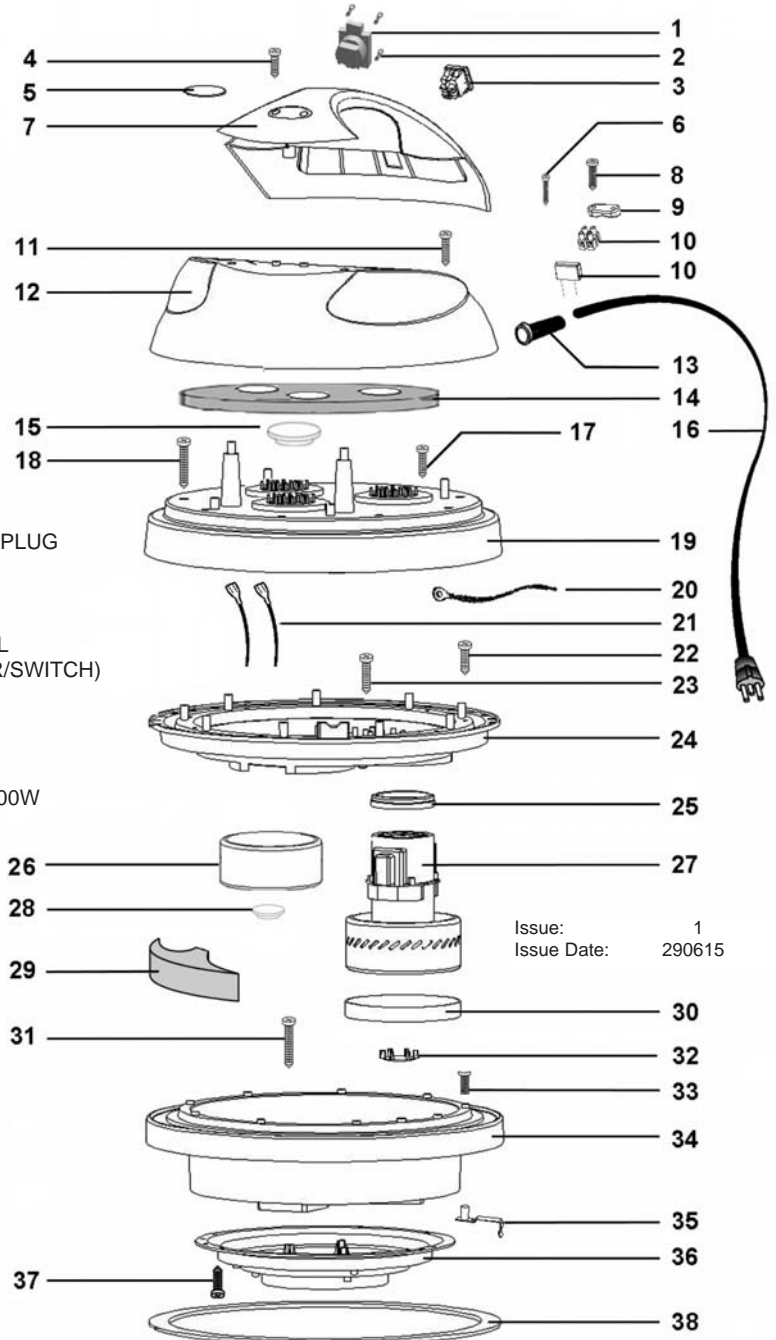




PARTS FOR:
75ltr WET & DRY INDUSTRIAL VACUUM CLEANER
TWIN MOTOR STAINLESS DRUM 1200/2400W
 MODEL: **PC85**

1 OF 3

ITEM	PART NO	DESCRIPTION
1	PC85.01	SOCKET (3-PIN PLUG)
2	PC85.02	SCREW M4x20
3	PC85.03	LIGHT SWITCH (RED)
4	PC85.04	SCREW S/T 5x20
5	PC85.05	STICKER, SEALEY MODEL
6	PC85.06	SCREW S/T 2.9x19
7	PC85.07	HANDLE RED 2 HOLE dia260
8	PC85.08	SCREW S/T 5x25
9	PC85.09	CABLE GRIP
10	PC85.10	TERMINAL BLOCKS(C/W WIRE)
11	PC85.11	SCREW S/T 5x25
12	PC85.12	BLACK COVER dia441
13	PC85.13	CABLE SLEEVE
14	PC85.14	FILTER MTP/30 95x15mm
15	PC85.15	POLYETHYLENE STOPPER dia63
16	PC85.16	POWER CORD H05 2x1.5mm 8.5m UK PLUG
17	PC85.17	SCREW S/T 5x50
18	PC85.18	SCREW S/T 5X40
19	PC85.19	MOTOR COVER RED dia452
20	PC85.20	CONNECTION CABLE WITH TERMINAL
21	PC85.21	CONNECTION WIRES 600mm (MOTOR/SWITCH)
22	PC85.22	SCREW S/T 5x35
23	PC85.23	SCREW S/T 5x40
24	PC85.24	MOTOR HOLDER, BLACK dia444
25	PC85.25	MOTOR PLASTIC SPACER RING
26	PC85.26	MOTOR, BY-PASS DOUBLE STAGE 1200W
27	PC85.27	FALSE MOTOR dia140 H=67mm
28	PC85.28	POLYETHYLENE STOPPER dia 41
29	PC85.29	SOUND ABSORBENT TRIANGLE
30	PC85.30	GASKET,"L" SECTION
31	PC85.31	SCREW S/T 5x40
32	PC85.32	AUTOMATIC VALVE dia50
33	PC85.33	SCREW M5x25
34	PC85.34	MOTOR BASE RED dia452
35	PC85.35	GROUND PLATE
36	PC85.36	CONVEYER
37	PC85.37	SCREW S/T 5x16
38	PC85.38	GASKET HEAD/TANK dia441x395x3



Issue: 1
 Issue Date: 290615



Sole UK Distributor,
 Sealey Group, Kempson Way,
 Suffolk Business Park,
 Bury St Edmunds, Suffolk, IP32 7AR



01284 757500
 01284 703534



www.sealey.co.uk
 sales@sealey.co.uk



PARTS FOR:
75ltr WET & DRY INDUSTRIAL VACUUM CLEANER
TWIN MOTOR STAINLESS DRUM 1200/2400W
MODEL: PC85

2 OF 3

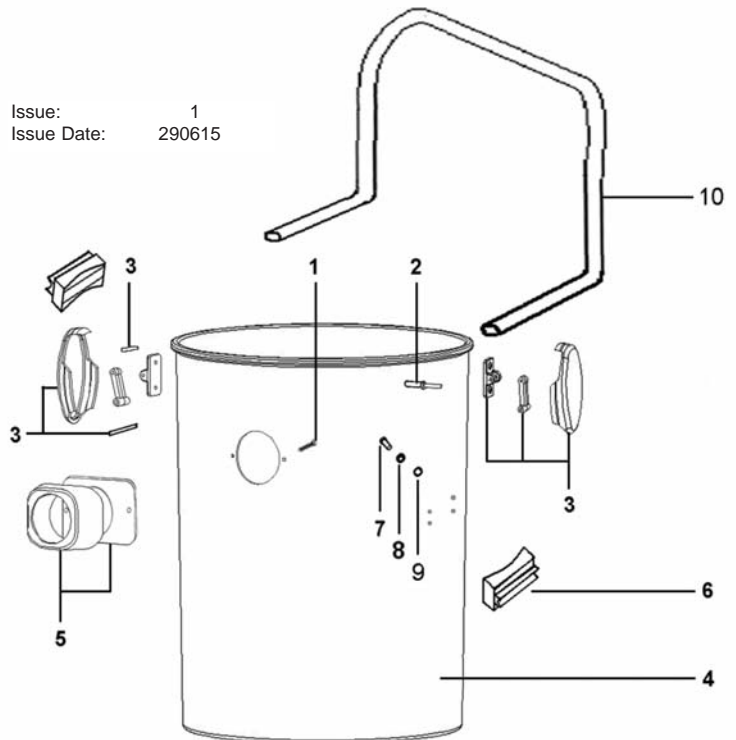


ITEM	PART NO	DESCRIPTION
A	PC85.SF	SPONGE FOAM FILTER
B	PC85.PF	POLYESTER RING FILTER
C	PC85.PB	POLYESTER BAG FILTER
D	PC85.CF	CARTRIDGE PAPER FILTER
E	PC85.NB	NYLON BAG FILTER
F	PC85.DB	DUST COLLECTION BAG Pack of 5

Issue: 1
 Issue Date: 290615

ITEM	PART NO	DESCRIPTION
1	PC85.ST01	SCREW S/T 5x25
2	PC85.ST02	RIVET 4.8x17
3	PC85.ST03	SPRING HOOK COMPLETE, BLACK
4	PC85.ST04	TANK STAINLESS STEEL H=580
5	PC85.ST05	COMPLETE INLET
6	PC85.ST06	TANK ROLLO HINGE dia 25
7	PC85.ST07	SCREW S/T 5x25
8	PC85.ST08	FINISHING WASHER dia10
9	PC85.ST09	GASKET 13.5x5x1.5mm
10	PC85.ST10	HANDLE EXEL dia25

Issue: 1
 Issue Date: 290615



Sole UK Distributor,
 Sealey Group, Kempson Way,
 Suffolk Business Park,
 Bury St Edmunds, Suffolk, IP32 7AR



01284 757500



01284 703534



www.sealey.co.uk

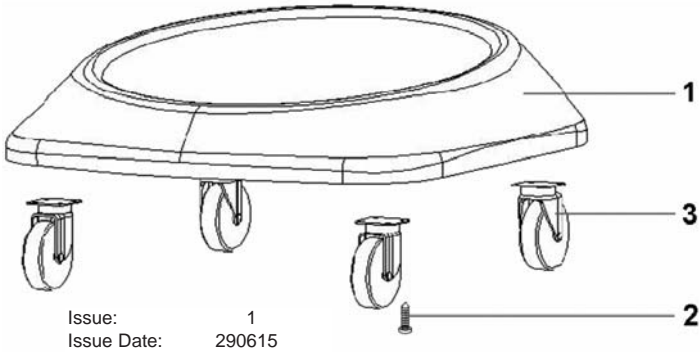


sales@sealey.co.uk



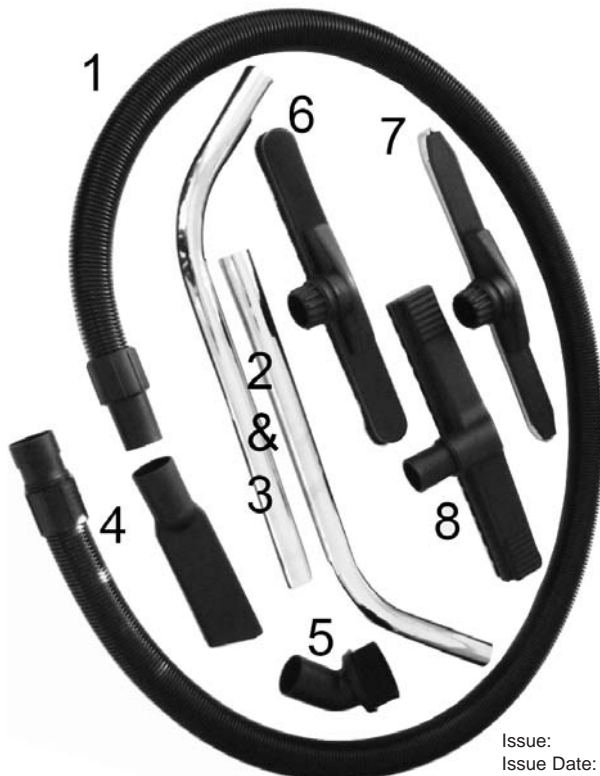
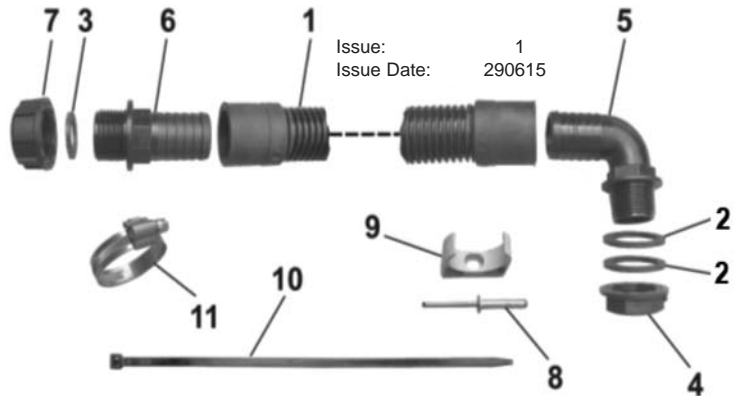
PARTS FOR:
75ltr WET & DRY INDUSTRIAL VACUUM CLEANER
TWIN MOTOR STAINLESS DRUM 1200/2400W
 MODEL: **PC85**

3 OF 3



ITEM	PART NO	DESCRIPTION
1	PC85.TR01	TROLLEY, BLACK BODY
2	PC85.TR02	SCREW S/T 5x16
3	PC85.TR03	WHEEL dia80

ITEM	PART NO	DESCRIPTION
1	PC85.DS01	DRAIN HOSE
2	PC85.DS02	GASKET 1" DRAIN SET/PUMP MOD
3	PC85.DS03	SPACER dia30.7 - STOPPER DRAIN SET
4	PC85.DS04	RING NUT 1" - DRAIN SET
5	PC85.DS05	CURVED COUPLING M 1" dia33
6	PC85.DS06	STRAIGHT COUPLING 1" dia 30
7	PC85.DS07	STOPPER F 1" - DRAIN SET
8	PC85.DS08	RIVET 4.8x25
9	PC85.DS09	CLIP GREY dia32mm
10	PC85.DS10	LARGE CLIP, BLACK 7.5mm
11	PC85.DS11	METAL CLIP dia30-45 ZINC



ITEM	PART NO	DESCRIPTION
1	PC85.ACC01	FLEXIBLE HOSE WITH SWIVEL CONNECTORS
2	PC85.ACC02	CRANKED VACUUM TUBE
3	PC85.ACC03	CRANKED VACUUM TUBE
4	PC85.ACC04	WEDGE NOZZLE
5	PC85.ACC05	BRUSH COBWEB NOZZLE
6	PC85.ACC06	DRY CARPET BRUSH NOZZLE
7	PC85.ACC07	WET FLOOR NOZZLE
8	PC85.ACC08	DRY FLOOR PLAIN NOZZLE



Sole UK Distributor,
 Sealey Group, Kempson Way,
 Suffolk Business Park,
 Bury St Edmunds, Suffolk, IP32 7AR

01284 757500
 01284 703534

www.sealey.co.uk
sales@sealey.co.uk