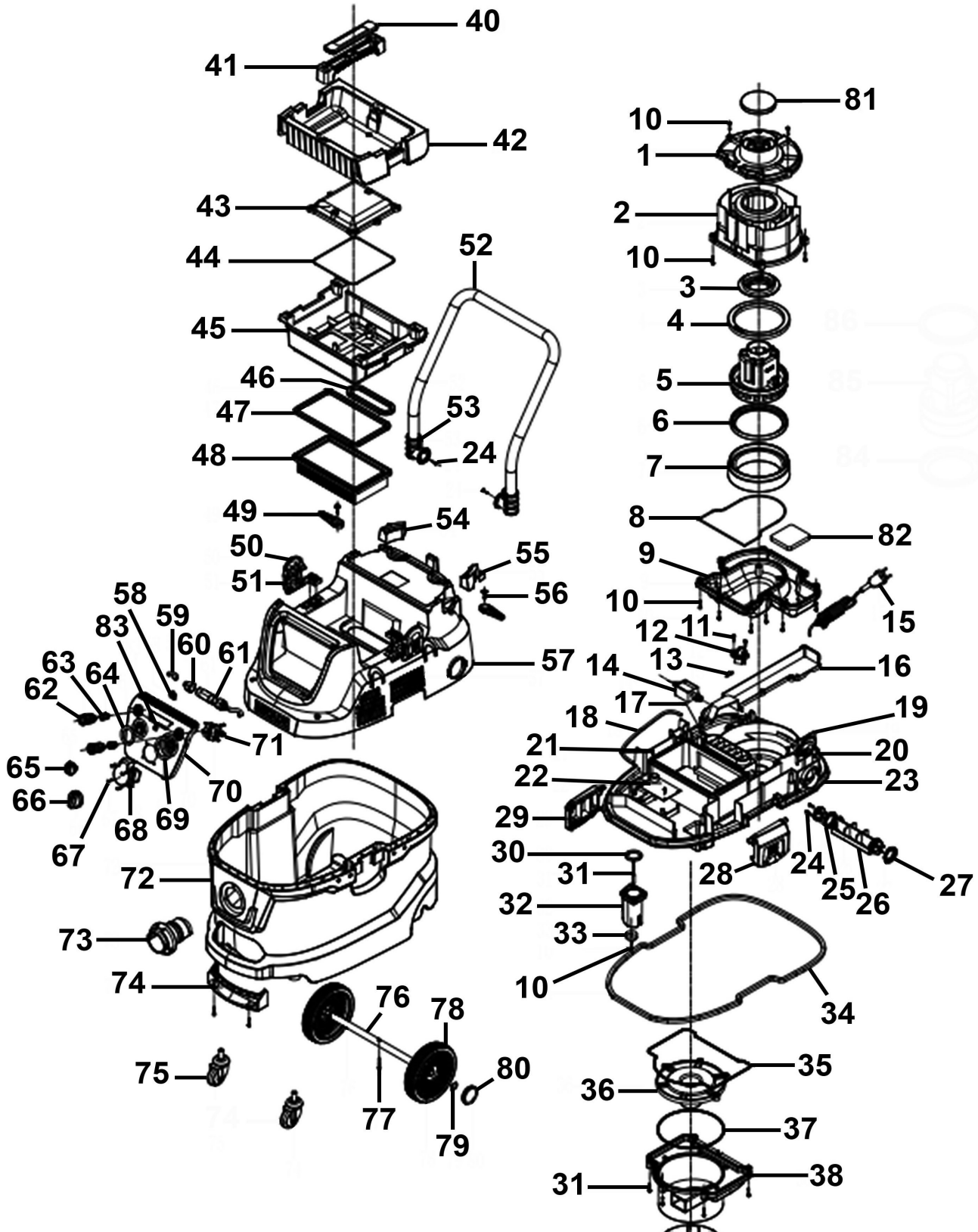


Parts Information:  
**Dust-Free Wet & Dry Industrial Vacuum  
 Cleaner 40L Plastic Drum M-Class  
 Filtration Self-Clean  
 Model No: PC400MA**



**NOTE:** It is our policy to continually improve products and as such we reserve the right to alter data, specifications and component parts without prior notice. There may be alternative versions of this product, please contact us should you require this information.

**IMPORTANT:** No liability is accepted for incorrect use of product. Spare parts must be fitted by a competent person

**WARRANTY:** Guarantee is 12 months from purchase date, proof of which will be required for any claim.



Parts Information:  
**Dust-Free Wet & Dry Industrial Vacuum  
 Cleaner 40L Plastic Drum M-Class  
 Filtration Self-Clean  
 Model No: PC400MA**

Item	Part No.	Description	Qty
1	PC400MA-01	Motor Base Cover	1
2	PC400MA-02	Motor Base	1
3	PC400MA-03	Motor Connection Ring	1
4	PC400MA-04	Motor Upper Seal Ring	1
5	PC400MA-05	Motor	1
6	PC400MA-06	Motor Lower Seal Ring	1
7	PC400MA-07	Motor Block	1
8	PC400MA-08	Air Guide Sealing Ring	1
9	PC400MA-09	Air Guide Cover	1
10	PC400MA-10	Self-Tapping Screw ST4 x 20	7
11	PC400MA-11	Self-Tapping Screw ST4 x 16	1
12	PC400MA-12	Cable Grip	1
13	PC400MA-13	Pin	1
14	PC400MA-14	Electromagnetic	1
15	PC400MA-15	Power Cable	1
16	PC400MA-16	Airflow Cover	1
17	PC400MA-17	Airflow Tools Connection	1
18	PC400MA-18	Dust Vibration Air Guide Hose	1
19	PC400MA-19	Blower Board Plate	1
20	PC400MA-20	Blower Board Plate Spring	1
21	PC400MA-21	Self-Tapping Screw ST3 x 12	4
22	PC400MA-22	PCB	1
23	PC400MA-23	Tank Cover	1
24	PC400MA-24	Self-Tapping Screw ST4 x 12	4
25	PC400MA-25	Dust Vibration Connector	1
26	PC400MA-26	Dust Vibration Tube	1
27	PC400MA-27	Dust Vibration Seal Ring	2
28	PC400MA-28	Tank Clip, Left Side	1
29	PC400MA-29	Tank Clip, Right Side	1
30	PC400MA-30	Valve Block Sealing Ring	1
31	PC400MA-31	Magnetic Closing Switch	1
32	PC400MA-32	Valve Block Seat	1
33	PC400MA-33	Water Valve	1
34	PC400MA-34	Tank Cover Sealing Ring	1
35	PC400MA-35	Cyclone Sealing Ring	1
36	PC400MA-36	Cyclone Board	1
37	PC400MA-37	Cyclone Board Sealing Ring	1
38	PC400MA-38	Cyclone Cover	1
39	PC400MA-39	Cyclone Tank	1
40	PC400MA-40	Top Handle Cover	1
41	PC400MA-41	Top Handle	1
42	PC400MA-42	Middle Cover	1

Item	Part No.	Description	Qty
43	PC400MA-43	Middle Airflow Guide Cover	1
44	PC400MA-44	Airflow Guide Seal	1
45	PC400MA-45	Middle Cover Holder	1
46	PC400MA-46	Airflow Outlet Sealing Ring	1
47	PC400MA-47	HEPA Filter Sealing Ring	1
48	PC400MCF	Washable M-Class HEPA Filter	1
49	PC400MA-49	Cable Winding Holder	2
50	PC400MA-50	Middle Cover Side Clip	2
51	PC400MA-51	Middle Cover Side Clip Block	2
52	PC400MA-52	Push Handle	1
53	PC400MA-53	Push Handle Seat	1
54	PC400MA-54	Push Handle, Left Side Support	1
55	PC400MA-55	Push Handle, Right Side Support	1
56	PC400MA-56	Self-Tapping Screw ST4 x 20	2
57	PC400MA-57	Top Cover	1
58	PC400MA-58	Potentiometer	1
59	PC400MA-59	Connection Air Hose	2
60	PC400MA-60	Internal Quick Twist (A)	2
61	PC400MA-61	Magnetic Inductive Switch	1
62	PC400MA-62	Outer Air Connector	2
63	PC400MA-63	Internal Quick Twist (B)	2
64	PC400MA-64	Label for Power Adjustment	1
65	PC400MA-65	Power Adjustment Switch Knob	1
66	PC400MA-66	Switch Knob	1
67	PC400MA-67	Self-Tapping Screw ST4 x 12	4
68	PC400MA-68	Power Socket	1
69	PC400MA-69	Switch Label	1
70	PC400MA-70	Front Cover	1
71	PC400MA-71	Rotation Switch	4
72	PC400MA-72	Tank	1
73	PC400MA-73	Suction Hose Inlet Seat	1
74	PC400MA-74	Swivel Castor Support	1
75	PC400MA-75	Swivel Castor	2
76	PC400MA-76	Wheel Axle	1
77	PC400MA-77	Self-Tapping Screw ST4 x 30	1
78	PC400MA-78	Rear Wheel	2
79	PC400MA-79	External Circlip Ø16	4
80	PC400MA-80	Wheel Cover	2
81	PC400MA-81	Motor Noise Diffuser Filter	1
82	PC400MA-82	Noise Diffuser Muffler	1
83	PC400MA-83	Warning Light	1

**NOTE:** It is our policy to continually improve products and as such we reserve the right to alter data, specifications and component parts without prior notice. There may be alternative versions of this product, please contact us should you require this information.

**IMPORTANT:** No liability is accepted for incorrect use of product. Spare parts must be fitted by a competent person

**WARRANTY:** Guarantee is 12 months from purchase date, proof of which will be required for any claim.

Sealey Group, Kempson Way, Suffolk Business Park, Bury St Edmunds, Suffolk. IP32 7AR



01284 757500



sales@sealey.co.uk

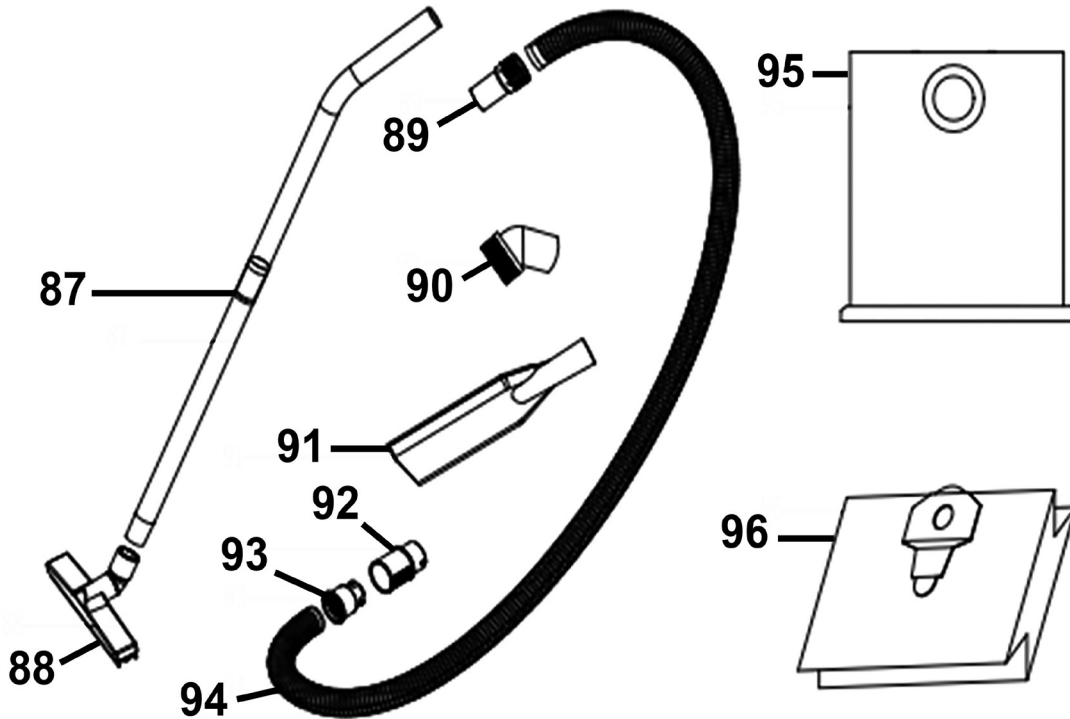


www.sealey.co.uk



Parts Information:  
**Dust-Free Wet & Dry Industrial Vacuum  
 Cleaner 40L Plastic Drum M-Class  
 Filtration Self-Clean  
 Model No: PC400MA**

## Accessories



Item	Part No.	Description	Qty
87	PC400MA-87	Telescopic Tube	2
88	PC400MA-88	Floor Brush	1
89	PC400MA-89	Hose Connector	1
90	PC400MA-90	Round Brush	1
91	PC400MA-91	Crevice Nozzle	1

Item	Part No.	Description	Qty
92	PC400MA-92	Suction Hose Connector	1
93	PC400MA-93	Threaded Connection Ring	1
94	PC400MA-94	Suction Hose 2m	1
95	PC400MFF	Foam Filter	1
96	PC400MDB	M-Class Dust Bag	1

**NOTE:** It is our policy to continually improve products and as such we reserve the right to alter data, specifications and component parts without prior notice. There may be alternative versions of this product, please contact us should you require this information.

**IMPORTANT:** No liability is accepted for incorrect use of product. Spare parts must be fitted by a competent person

**WARRANTY:** Guarantee is 12 months from purchase date, proof of which will be required for any claim.

**Sealey Group**, Kempson Way, Suffolk Business Park, Bury St Edmunds, Suffolk. IP32 7AR



01284 757500



sales@sealey.co.uk



www.sealey.co.uk