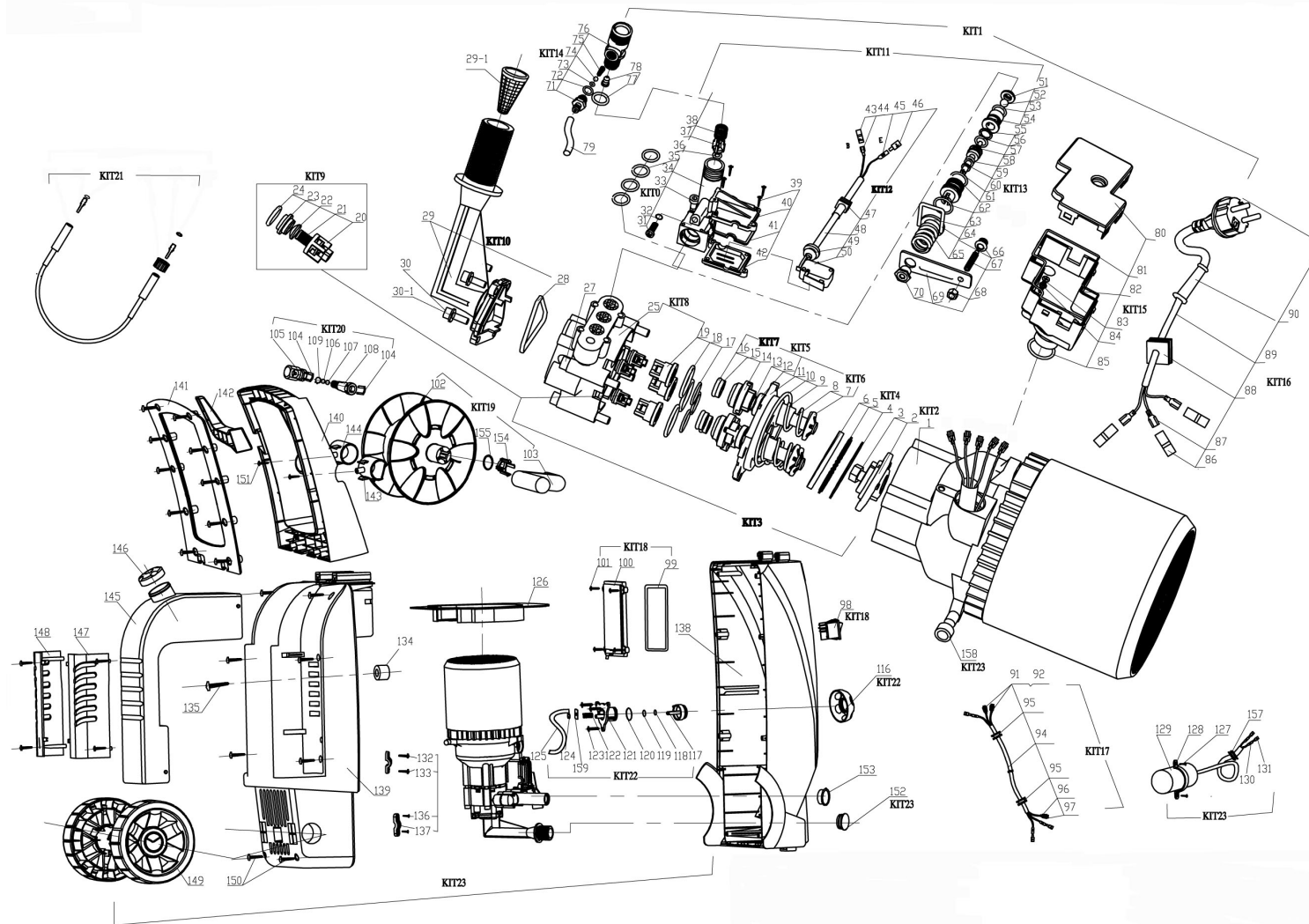




Parts Information:  
Pressure Washer 3400psi with TSS & Rotablast Nozzle® 6.7ltr/Min 230V  
Model No: PC3401



**NOTE:** It is our policy to continually improve products and as such we reserve the right to alter data, specifications and component parts without prior notice.

**IMPORTANT:** No liability is accepted for incorrect use of product.

**WARRANTY:** Guarantee is 12 months from purchase date, proof of which will be required for any claim.

Sealey Group, Kempson Way, Suffolk Business Park, Bury St Edmunds, Suffolk. IP32 7AR



01284 757500



01284 703534



sales@sealey.co.uk



www.sealey.co.uk



Parts Information:  
**Pressure Washer 3400psi with TSS &  
 Rotablast Nozzle® 6.7ltr/Min 230V  
 Model No: PC3401**

Item	Part No.	Description
	<b>PC3401.KIT1</b>	<b>MOTOR &amp; PUMP ASS'Y</b>
1	FNA.10000900	MOTOR
--	FNA.37007900	SLEEVE (NOT SHOWN)
2	FNA.43012600	CAM
3	FNA.21006500	WOBBLE PLATE SCREW (LEFT)
4	FNA.43009800	SHEET METAL
5	FNA.23000900	ROLLER
6	FNA.43009900	HEAVY PLATE
7	FNA.43009100	PISTON SPRING SEAT
8	FNA.43010000	PISTON
9	FNA.43010500	PISTON SPRING
10	FNA.26001300	RUBBER SEAL
11	FNA.43008800	PISTON BODY
12	FNA.41003400	PISTON SEAL
13	FNA.22005200	SMALL O-RING
14	FNA.42020800	PILOT SHEATH
15	FNA.42021200	GRAPHITE RING
16	FNA.22005100	PISTON O-RING
17	FNA.22004300	O-RING PILOT SHEATH
18	FNA.22004200	O-RING
19	FNA.42020900	CHECK VALVE COUPLING
20	FNA.42021100	CHECK VALVE PEDESTAL
21	FNA.43010300	CHECK VALVE SPRING
22	FNA.43009200	CHECK VALVE
23	FNA.42021000	CHECK VALVE COVER
24	FNA.22004400	CHECK VALVE O-RING
25	FNA.43016800	PUMP BODY
27	FNA.21006400	CAP SCREW
28	FNA.41003200	INLET PIPE SEAL RING
29	FNA.42097400	INLET PIPE
29-1	FNA.42000300	INLET FILTER
30	SCB416.S	SOCKET CAP BOLT ZINC M4X16
30-1	FWM5.S	FLAT WASHER M5 SINGLE
31	FNA.43010200	SCREW
32	FNA.22004800	O-RING
33	SCB535.S	SOCKET HEAD CAP SCREW M5x35
34	FNA.43016100	OUTLET BODY
35	FNA.22005400	O-RING
36	FNA.22004500	O-RING
37	FNA.42021700	VALVE CORE
38	FNA.43010400	VALVE CORE SPRING
39	FNA.21011300	SCREW
40	FNA.42028500	BOTTOM ELECTRICAL BOX

Item	Part No.	Description
41	FNA.41003600	SEAL PAD
42	FNA.42030000	UPPER ELECTRICAL BOX
43	FNA.37000200	SLEEVE
44	FNA.37000100	SLOT
45	FNA.37009200	SHORT STRAIGHT INSERT
46	FNA.37007900	SLEEVE
47	FNA.41003800	MICRO SWITCH CORD SQUARE BOOT
48	FNA.31003901	WIRE
49	FNA.41003700	MICRO SWITCH CORD RING BOOT
50	FNA.33000700	MICRO SWITCH
51	FNA.42021900	STEEL BALL COVER
52	SB-70	STEEL BALL 7.0mm
53	FNA.22004600	O-RING
54	FNA.42022000	SPILL VALVE SHELL
55	FNA.41003000	CLOSING RING
56	FNA.22004600	O-RING
57	FNA.43043800	VALVE CORE
58	FNA.22006900	PADESTAL SMALL O-RING
59	FNA.41009300	CLOSING RING
60	FNA.22003700	O-RING
61	FNA.42021800	SPILL VALVE JACKET
62	FNA.22004700	O-RING
63	FNA.43009400	CLOSING RING
64	FNA.43009300	U-PIN
65	FNA.43043700	SPRING
66	FNA.41003500	FEELER LEVER JACKET
67	FNA.43011100	FEELER LEVER
68	SN5.S	STEEL NUT M5 ZINC DIN934 (SINGLE)
69	FNA.43009500	TOTAL STOP BLADE
70	FNA.25000300	NUT
71 to 78	PC3401.KIT14	VENTURI ASS'Y
79	FNA.42080400	TUBE
80	FNA.42106700	CONNECTION BOX COVER
81	FNA.42086300	SEAL
82	FNA.42106600	CONNECTION BOX
83	FNA.21035800	SCREW
84	FNA.21031600	PLAIN PAD
85	FNA.22013500	O-RING
86	FNA.M37000800	SLEEVE
87	FNA.M37000900	TERMINAL
88	FNA.41003800	MICRO SWITCH CORD SQUARE BOOT
89	FNA.31002801	CABLE
90	FNA.41005300	CABLE SLEEVE

**NOTE:** It is our policy to continually improve products and as such we reserve the right to alter data, specifications and component parts without prior notice.

**IMPORTANT:** No liability is accepted for incorrect use of product.

**WARRANTY:** Guarantee is 12 months from purchase date, proof of which will be required for any claim.

**Sealey Group**, Kempson Way, Suffolk Business Park, Bury St Edmunds, Suffolk. IP32 7AR



01284 757500



01284 703534



sales@sealey.co.uk



www.sealey.co.uk



Parts Information:  
**Pressure Washer 3400psi with TSS &  
 Rotablast Nozzle® 6.7ltr/Min 230V  
 Model No: PC3401**

Item	Part No.	Description
	<b>PC3401.KIT2</b>	<b>MOTOR ASS'Y</b>
1	FNA.10000900	MOTOR
--	FNA.37007900	SLEEVE (NOT SHOWN)
2	FNA.43012600	CAM
3	FNA.21006500	WOBBLE PLATE SCREW (LEFT)
	<b>PC3401.KIT3</b>	<b>PUMP ASSEMBLY</b>
2	FNA.43012600	CAM
3	FNA.21006500	WOBBLE PLATE SCREW (LEFT)
4	FNA.43009800	SHEET METAL
5	FNA.23000900	ROLLER
6	FNA.43009900	HEAVY PLATE
7	FNA.43009100	PISTON SPRING SEAT
8	FNA.43010000	PISTON
9	FNA.43010500	PISTON SPRING
10	FNA.26001300	RUBBER SEAL
11	FNA.43008800	PISTON BODY
12	FNA.41003400	PISTON SEAL
13	FNA.22005200	SMALL O-RING
14	FNA.42020800	PILOT SHEATH
15	FNA.42021200	GRAPHITE RING
16	FNA.22005100	PISTON O-RING
17	FNA.22004300	O-RING PILOT SHEATH
18	FNA.22004200	O-RING
19	FNA.42020900	CHECK VALVE COUPLING
25	FNA.43016800	PUMP BODY
	<b>PC3401.KIT4</b>	<b>BEARING RACE</b>
4	FNA.43009800	SHEET METAL
5	FNA.23000900	ROLLER
6	FNA.43009900	HEAVY PLATE
	<b>PC3401.KIT5</b>	<b>PISTON BODY ASS'Y</b>
9	FNA.43010500	PISTON SPRING
10	FNA.26001300	RUBBER SEAL
11	FNA.43008800	PISTON BODY
12	FNA.41003400	PISTON SEAL
13	FNA.22005200	SMALL O-RING
	<b>PC3401.KIT6</b>	<b>PISTON ASS'Y</b>
7	FNA.43009100	PISTON SPRING SEAT

Item	Part No.	Description
8	FNA.43010000	PISTON
	<b>PC3401.KIT7</b>	<b>PILOT SHEATH ASS'Y</b>
14	FNA.42020800	PILOT SHEATH
15	FNA.42021200	GRAPHITE RING
16	FNA.22005100	PISTON O-RING
	<b>PC3401.KIT8</b>	<b>PUMP BODY ASS'Y</b>
17	FNA.22004300	O-RING PILOT SHEATH
18	FNA.22004200	O-RING
19	FNA.42020900	CHECK VALVE COUPLING
25	FNA.43016800	PUMP BODY
	<b>PC3401.KIT9</b>	<b>ONE-WAY VALVE ASS'Y</b>
20	FNA.42021100	CHECK VALVE PEDESTAL
21	FNA.43010300	CHECK VALVE SPRING
22	FNA.43009200	CHECK VALVE
23	FNA.42021000	CHECK VALVE COVER
24	FNA.22004400	CHECK VALVE O-RING
	<b>PC3401.KIT10</b>	<b>INLET PIPE ASS'Y</b>
28	FNA.41003200	INLET PIPE SEAL RING
29	FNA.42097400	INLET PIPE
29-1	FNA.42000300	INLET FILTER
	<b>PC3401.KIT11</b>	<b>OUTLET BODY ASS'Y</b>
31	FNA.43010200	SCREW
32	FNA.22004800	O-RING
34	FNA.43016100	OUTLET BODY
35	FNA.22005400	O-RING
36	FNA.22004500	O-RING
37	FNA.42021700	VALVE CORE
38	FNA.43010400	VALVE CORE SPRING
39	FNA.21011300	SCREW
40	FNA.42028500	BOTTOM ELECTRICAL BOX
41	FNA.41003600	SEAL PAD
42	FNA.42030000	UPPER ELECTRICAL BOX
51	FNA.42021900	STEEL BALL COVER
52	SB-70	STEEL BALL 7.0mm
53	FNA.22004600	O-RING
54	FNA.42022000	SPILL VALVE SHELL

**NOTE:** It is our policy to continually improve products and as such we reserve the right to alter data, specifications and component parts without prior notice.

**IMPORTANT:** No liability is accepted for incorrect use of product.

**WARRANTY:** Guarantee is 12 months from purchase date, proof of which will be required for any claim.

**Sealey Group**, Kempson Way, Suffolk Business Park, Bury St Edmunds, Suffolk. IP32 7AR



01284 757500



01284 703534



sales@sealey.co.uk



www.sealey.co.uk



Parts Information:  
**Pressure Washer 3400psi with TSS &  
 Rotablast Nozzle® 6.7ltr/Min 230V  
 Model No: PC3401**

Item	Part No.	Description
	<b>PC3401.KIT12</b>	<b>MICRO SWITCH ASS'Y</b>
43	FNA.37000200	SLEEVE
44	FNA.37000100	SLOT
45	FNA.37009200	SHORT STRAIGHT INSERT
46	FNA.37007900	SLEEVE
47	FNA.41003800	MICRO SWITCH CORD SQUARE BOOT
48	FNA.31003901	WIRE
49	FNA.41003700	MICRO SWITCH CORD RING BOOT
50	FNA.33000700	MICRO SWITCH
	<b>PC3401.KIT13</b>	<b>VALVE SHEATH ASS'Y</b>
55	FNA.41003000	CLOSING RING
56	FNA.22004600	O-RING
57	FNA.43043800	VALVE CORE
58	FNA.22006900	PADESTAL SMALL O-RING
59	FNA.41009300	CLOSING RING
60	FNA.22003700	O-RING
61	FNA.42021800	SPILL VALVE JACKET
62	FNA.22004700	O-RING
63	FNA.43009400	CLOSING RING
64	FNA.43009300	U-PIN
65	FNA.43043700	SPRING
66	FNA.41003500	FEELER LEVER JACKET
67	FNA.43011100	FEELER LEVER
68	SN5.S	STEEL NUT M5 ZINC DIN934 (SINGLE)
69	FNA.43009500	TOTAL STOP BLADE
70	FNA.25000300	NUT
<b>71 to 78</b>	<b>PC3401.KIT14</b>	<b>VENTURI ASS'Y</b>
79	FNA.42080400	TUBE
	<b>PC3401.KIT15</b>	<b>CONNECTION BOX ASS'Y</b>
80	FNA.42106700	CONNECTION BOX COVER
81	FNA.42086300	SEAL
82	FNA.42106600	CONNECTION BOX
83	FNA.21035800	SCREW
84	FNA.21031600	PLAIN PAD
85	FNA.22013500	O-RING

Item	Part No.	Description
	<b>PC3401.KIT16</b>	<b>LEAD WIRE ASS'Y</b>
86	FNA.M37000800	SLEEVE
87	FNA.M37000900	TERMINAL
88	FNA.41003800	MICRO SWITCH CORD SQUARE BOOT
89	FNA.31002801	CABLE
90	FNA.41005300	CABLE SLEEVE
	<b>PC3401.KIT17</b>	<b>SWITCH WIRE BODY</b>
91	FNA.37009200	SHORT STRAIGHT INSERT
92	FNA.37007901	SLEEVE
--	FNA.37009300	STRAIGHT SLOT (NOT SHOWN)
94	FNA.31009500	LEAD WIRE
95	FNA.41003800	MICRO SWITCH CORD SQUARE BOOT
96	FNA.M37000800	SLEEVE
97	FNA.M37000700	TERMINAL
	<b>PC3401.KIT18</b>	<b>SWITCH BOX ASS'Y</b>
98	FNA.33000800	MAIN SWITCH
99	FNA.42086300	SEAL
100	FNA.42112100	SWITCH BOX COVER
101	FNA.21009700	RD HEAD S/T SCREW M3.5 X 12 BLACK
	<b>PC3401.KIT19</b>	<b>HOSE REEL ASS'Y</b>
102	FNA.42117000	HOSE REEL
103	FNA.42117100	HANDLE
109	FNA.43070700	CIRCLIP
154	FNA.42119900	HANDLE SUPPORT
155	FNA.22013500	O-RING
--	FNA.10196200	WINDING HANDLE FOR PC3401.KIT19 (NOT SHOWN)
	<b>PC3401.KIT20</b>	<b>CONNECTOR ASS'Y</b>
104	FNA.43070000	U-PIN
105	FNA.43070100	SHIFT CONNECTOR BODY
106	FNA.22010500	O-RING
107	FNA.22556100	O-RING
108	FNA.43070200	SHIFT CONNECTOR CORE
	<b>PC3401.KIT21</b>	<b>PIPE BODY ASS'Y</b>

**NOTE:** It is our policy to continually improve products and as such we reserve the right to alter data, specifications and component parts without prior notice.

**IMPORTANT:** No liability is accepted for incorrect use of product.

**WARRANTY:** Guarantee is 12 months from purchase date, proof of which will be required for any claim.

**Sealey Group**, Kempson Way, Suffolk Business Park, Bury St Edmunds, Suffolk. IP32 7AR



01284 757500



01284 703534



sales@sealey.co.uk



www.sealey.co.uk



Parts Information:  
**Pressure Washer 3400psi with TSS &  
 Rotablast Nozzle® 6.7ltr/Min 230V  
 Model No: PC3401**

Item	Part No.	Description
	<b>PC3401.KIT22</b>	<b>SOAP ADJUSTABLE BODY</b>
116	FNA.42121100	ADJUSTABLE KNOB
117	FNA.42121200	ADJUSTABLE SEAL COVER
118	FNA.22563000	O-RING
119	FNA.22564000	O-RING
120	FNA.22565000	O-RING
121	FNA.42112000	SOAP ADJUSTABLE PEDESTAL
122	FNA.43069000	SPRING
123	FNA.21009700	RD HEAD S/T SCREW M3.5 X 12 BLACK
124	FNA.43069100	SHAFT WHEEL (MIDDLE)
125	FNA.42113900	TUBE
159	FNA.43070800	KNOB PAD
	<b>PC3401.KIT23</b>	<b>HOUSING ASS'Y</b>
123	FNA.21009700	RD HEAD S/T SCREW M3.5 X 12 BLACK
126	FNA.42121300	THERMAL BAFFLE
127	FNA.21035900	SCREW
128	FNA.42121400	PRESS PLATE
129	FNA.37012800	CAPACITOR 450vac 50/60hz CBB60 33uf 90x4
130	FNA.37009200	SHORT STRAIGHT INSERT
131	FNA.37007901	SLEEVE
132	FNA.21010900	SCREW
133	FNA.42023100	CLAMPING PLATE
134	FNA.41005100	BACK-UP PAD
135	MSC835.SB	CSK PHILLIPS MACHINE SCREW M8x35 BLACK
136	FNA.21011700	RD HEAD S/T SCREW M4.8 X 18 BLACK
137	FNA.42120600	PRESS PLATE

Item	Part No.	Description
138	FNA.42121502	FRONT HOUSING (RED)
139	FNA.42112300	BACK HOUSING
140	FNA.42121600	HANDLE
141	FNA.42121700	HANDLE COVER
142	FNA.42121800	CABLE HOOK
143	FNA.42121900	HOSE REEL SUPPORT (RIGHT)
144	FNA.42122000	HOSE REEL SUPPORT (LEFT)
145	FNA.42112600	SOAP BOTTLE
146	FNA.42122202	SOAP BOTTLE CAP
147	FNA.42113100	GUN GUARD (RIGHT)
148	FNA.42112800	GUN GUARD (LEFT)
149	FNA.42084300	WHEEL
150	FNA.21011700	RD HEAD S/T SCREW M4.8 X 18 BLACK
151	FNA.21009100	SCREW
152	FNA.42021600	INLET COVER
153	FNA.42045301	OUTLET COVER
157	FNA.41003800	MICRO SWITCH CORD SQUARE BOOT
158	FNA.41005200	MOTOR FOOT
	<b>ACCESSORIES</b>	
--	FNA.10096202	CONNECTOR ASS'Y (NOT SHOWN)
--	FNA.10009502	GUN (NOT SHOWN)
--	FNA.10011200	LANCE FOR PC2950 & PC2700 (NOT SHOWN)
--	FNA.10061900	HI-LOW NOZZLE (NOT SHOWN)
--	PCAK03	TURBO ROTABLAST NOZZLE (NOT SHOWN)
--	FNA.42111700	HOSE ASS'Y (NOT SHOWN)
--	FNA.81001700	NEEDLE PROBE (NOT SHOWN)
--	PC3401.SK	SEAL KIT (NOT SHOWN)

**NOTE:** It is our policy to continually improve products and as such we reserve the right to alter data, specifications and component parts without prior notice.

**IMPORTANT:** No liability is accepted for incorrect use of product.

**WARRANTY:** Guarantee is 12 months from purchase date, proof of which will be required for any claim.

**Sealey Group**, Kempson Way, Suffolk Business Park, Bury St Edmunds, Suffolk. IP32 7AR



01284 757500



01284 703534



sales@sealey.co.uk



www.sealey.co.uk