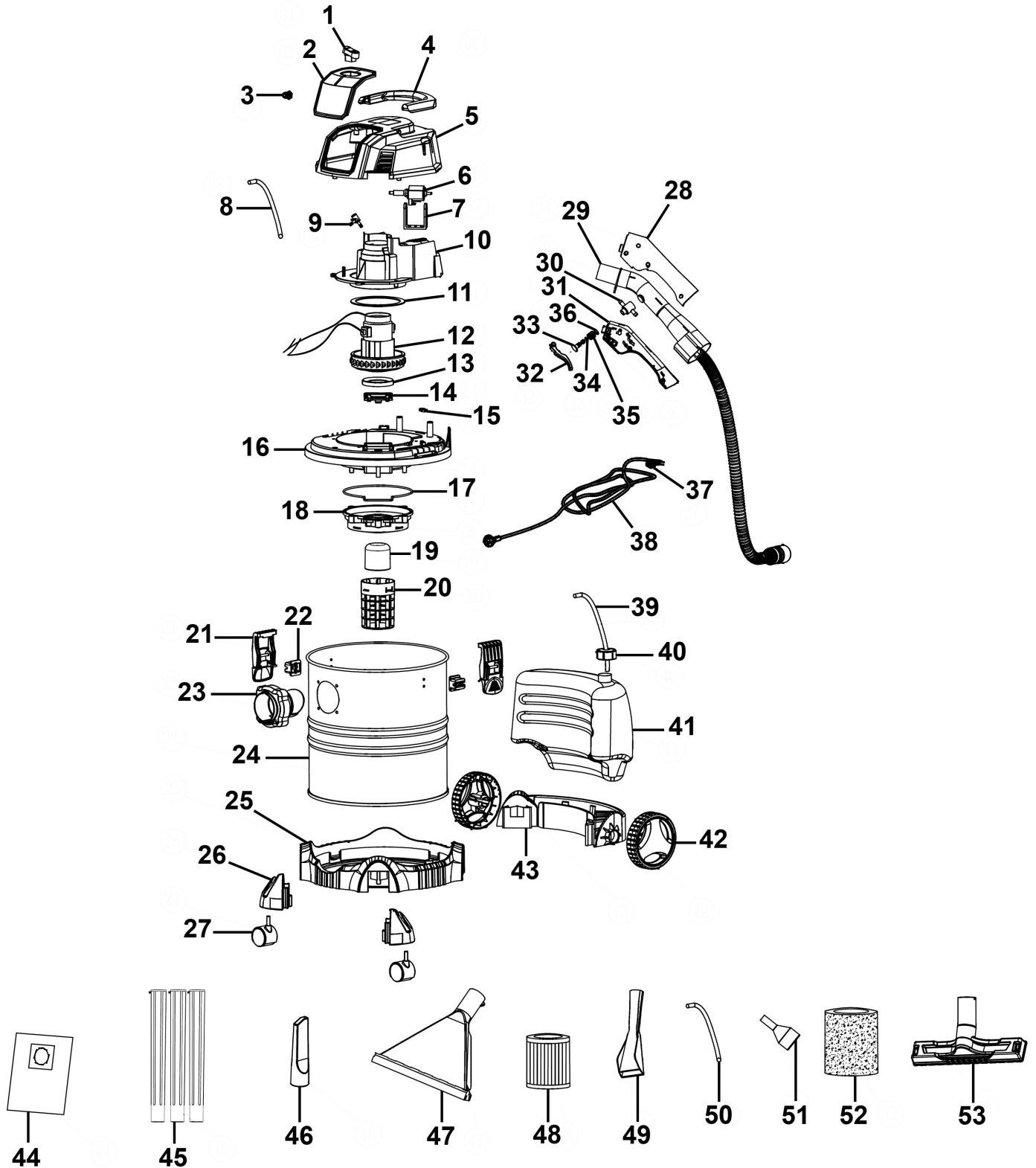




Parts Information:
20L Valeting Machine with Accessories
Wet & Dry 1400W/230V
Model No: PC310.V3



NOTE: It is our policy to continually improve products and as such we reserve the right to alter data, specifications and component parts without prior notice. There may be alternative versions of this product, please contact us should you require this information.

IMPORTANT: No liability is accepted for incorrect use of product. Spare parts must be fitted by a competent person

WARRANTY: Guarantee is 12 months from purchase date, proof of which will be required for any claim.

Sealey Group, Kempson Way, Suffolk Business Park, Bury St Edmunds, Suffolk. IP32 7AR



01284 757500



sales@sealey.co.uk



www.sealey.co.uk



Parts Information:
20L Valeting Machine with Accessories
Wet & Dry 1400W/230V
Model No: PC310.V3

Item	Part No.	Description	Qty
1	PC310-V3-01	On/Off Switch	1
2	PC310-V3-02	Decorative Cover	1
3	PC310-V3-03	Connector	1
4	PC310-V3-04	Handle for Top Cover	1
5	PC310-V3-05	Top Cover	1
6	PC310-V3-06	Pump	1
7	PC310-V3-07	Pump Bracket	1
8	PC310-V3-08	Tube (Small)	1
9	PC310-V3-09	Connector (3-way)	1
10	PC310-V3-10	Motor Cover	1
11	PC310-V3-11	Foam Seal (for Motor Cover)	1
12	PC310-V3-12	Motor	1
13	PC310-V3-13	Sealing Ring	1
14	PC310-V3-14	Cover Plate for Filter Cleaning	1
15	PC310-V3-15	Cord Clamp	2
16	PC310-V3-16	Lower Cover	1
17	PC310-V3-17	Foam Seal	1
18	PC310-V3-18	Base for Safety Valve	1
19	PC310-V3-19	Safety Valve	1
20	PC310-V3-20	Basket	1
21	PC310-V3-21	Tank Clip	1
22	PC310-V3-22	Tank Clip Base	2
23	PC310-V3-23	Air Inlet Base	2
24	PC310-V3-24	Stainless Steel Tank 20L	1
25	PC310-V3-25	Base	1
26	PC310-V3-26	Swivel Castor Wheel Base	1
27	PC310-V3-27	Wheel, Swivel Castor, Single Bolt	2
28	PC310-V3-28	Left Side Cover (for Airflow Control Handle)	2

Item	Part No.	Description	Qty
29	PC310-V3-29	Air flow Control Handle (w/Flexible Hose)	1
30	PC310-V3-30	Valve	1
31	PC310-V3-31	Right Side Cover (for Airflow Control Handle)	1
32	PC310-V3-32	Trigger	1
33	PC310-V3-33	Valve Core	1
34	PC310-V3-34	O-Ring	1
35	PC310-V3-35	Spring for Valve Core	1
36	PC310-V3-36	Water Seal	1
37	PC310-V3-37	Capacitor	1
38	PC310-V3-38	Power Cable	1
39	PC310-V3-39	Water Hose for Water/Soap Tank	1
40	PC310-V3-40	Cap for Water Tank	1
41	PC310-V3-41	Water/Soap Tank	1
42	PC310-V3-42	Rear Wheel (Fixed)	2
43	PC310-V3-43	Base for Water Tank	1
44	PCU04	Dust Collection Bag (Pack of 5)	1
45	PC310-V3-45	Extension Tube (x3)	1
46	PC310-V3-46	Crevice Nozzle	1
47	PC310-V3-47	Carpet Brush (Triangle)	1
48	PCU02	HEPA Filter	1
49	PC310-V3-49	Shampoo Brush	1
50	PC310-V3-50	Water Hose for Brush	1
51	PC310-V3-51	Filter (inside Clean Water Tank)	1
52	PCU01	Foam Filter (Pack of 10)	1
53	PC310-V3-53	Combo Floor Brush	1

NOTE: It is our policy to continually improve products and as such we reserve the right to alter data, specifications and component parts without prior notice. There may be alternative versions of this product, please contact us should you require this information.

IMPORTANT: No liability is accepted for incorrect use of product. Spare parts must be fitted by a competent person

WARRANTY: Guarantee is 12 months from purchase date, proof of which will be required for any claim.

Sealey Group, Kempson Way, Suffolk Business Park, Bury St Edmunds, Suffolk. IP32 7AR



01284 757500



sales@sealey.co.uk



www.sealey.co.uk