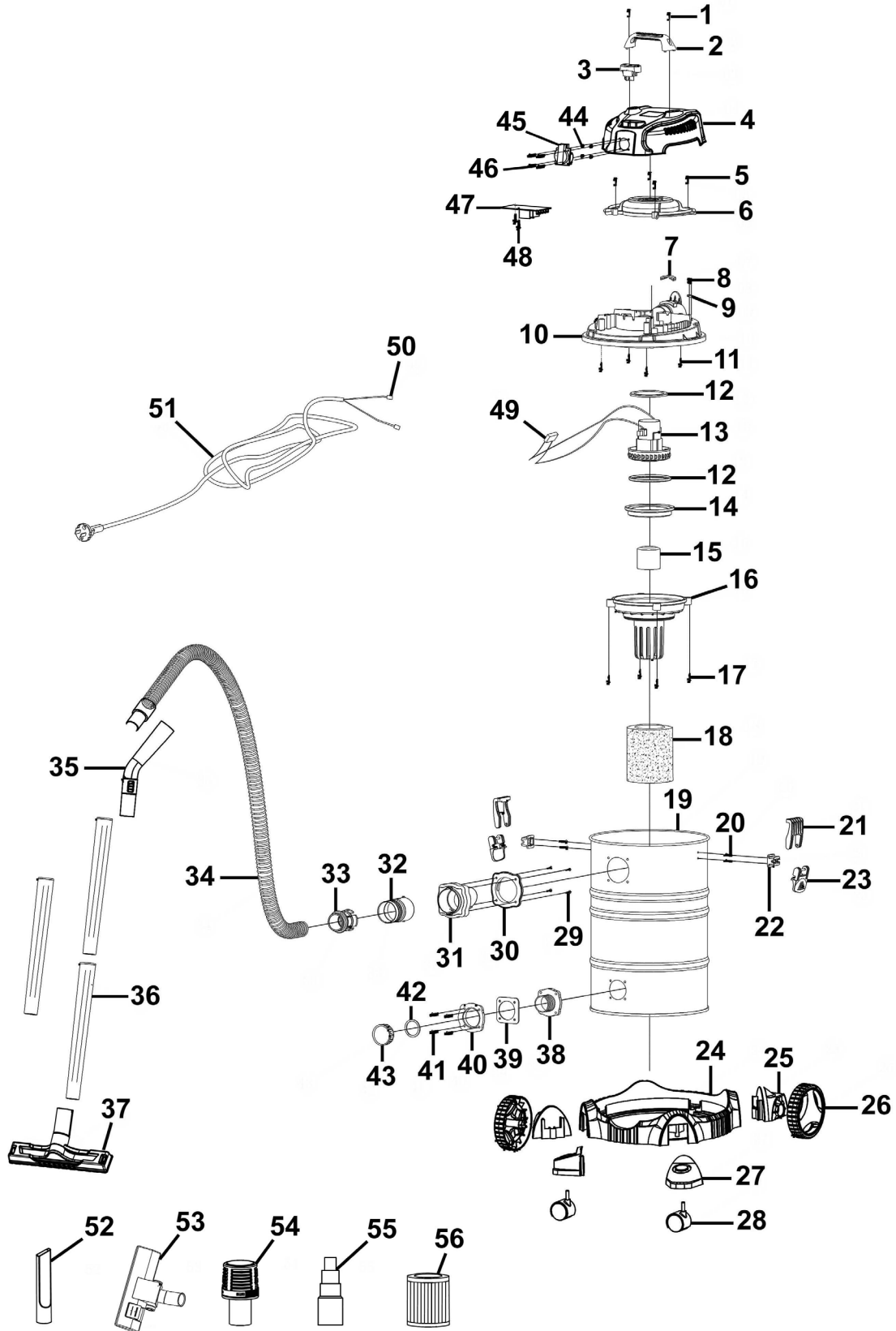




Parts Information:  
Industrial Vacuum Cleaner Stainless Drum  
Auto Start 20L 1400W  
Model No: PC200SDAUTO.V4



**NOTE:** It is our policy to continually improve products and as such we reserve the right to alter data, specifications and component parts without prior notice. There may be alternative versions of this product, please contact us should you require this information.

**IMPORTANT:** No liability is accepted for incorrect use of product. Spare parts must be fitted by a competent person

**WARRANTY:** Guarantee is 12 months from purchase date, proof of which will be required for any claim.

Sealey Group, Kempson Way, Suffolk Business Park, Bury St Edmunds, Suffolk. IP32 7AR



01284 757500



sales@sealey.co.uk



www.sealey.co.uk



Parts Information:  
**Industrial Vacuum Cleaner Stainless Drum  
 Auto Start 20L 1400W  
 Model No: PC200SDAUTO.V4**

Item	Part No.	Description	Qty
1	PC200SDAUTO-V4-01	Self-Tapping Screw	2
2	PC200SDAUTO-V4-02	Top Handle	1
3	PC200SDAUTO-V4-03	Rocker Switch	1
4	PC200SDAUTO-V4-04	Top Cover	1
5	PC200SDAUTO-V4-05	Self-Tapping Screw	4
6	PC200SDAUTO-V4-06	Motor Cover	1
7	PC200SD-V4-07	Lower Cover Stopper	1
8	PC200SD-V4-08	Self-Tapping Screw	2
9	PC200SD-V4-09	Cable Grip	1
10	PC200SD-V4-10	Lower Cover	1
11	PC200SD-V4-11	Self-Tapping Screw	4
12	PC200SD-V4-12	Sealing Ring	2
13	PC200SDAUTO-V4-13	Motor 1400W	1
14	PC200SD-V4-14	Base for Safety Valve	1
15	PC200SD-V4-15	Safety Valve	1
16	PC200SD-V4-16	Base for Foam Filter	1
17	PC200SD-V4-17	Self-Tapping Screw	4
18	PCU01	Foam Filter for PC200 & PC300 Series - Pack of 10	1
19	PC200SD-V4-19	Stainless Steel Tank 20L	1
20	PC200SD-V4-20	Self-Tapping Screw	4
21	PC200SD-V4-21	Tank Clip (Upper)	2
22	PC200SD-V4-22	Tank Clip Base	2
23	PC200SD-V4-23	Tank Clip (Lower)	2
24	PC200SD-V4-24	Base	1
25	PC200SD-V4-25	Base for Rear Wheel	2
26	PC200SD-V4-26	Rear Wheel	2
27	PC200SD-V4-27	Base for Swivel Castor	2
28	PC200SD-V4-28	Wheel, Swivel Castor, Single Bolt	2

Item	Part No.	Description	Qty
29	PC200SD-V4-29	Self-Tapping Screw	4
30	PC200SD-V4-30	Hose Inlet Base	1
31	PC200SD-V4-31	Hose Inlet	1
32	PC200SD-V4-32	Hose Connector (A)	1
33	PC200SD-V4-33	Hose Connector (B)	1
34	PC200SD-V4-34	Flexible Hose	1
35	PC200SD-V4-35	Flexible Hose Adaptor	1
36	PC200SD-V4-36	Stainless Steel Extension Tube	3
37	PC300SD-V4-46	Floor Brush	1
38	PC200SD-V4-38	Drainage Outlet	1
39	PC200SD-V4-39	Sealing Ring for Drainage Outlet	1
40	PC200SD-V4-40	Fixed Base for Drainage Outlet	1
41	PC200SD-V4-41	Self-Tapping Screw	4
42	PC200SD-V4-42	Sealing Ring for Drainage Cap	1
43	PC200SD-V4-43	Drainage Cap	1
44	PC200SDAUTO-V4-44	Nut	4
45	PC200SDAUTO-V4-45	Power Socket	1
46	PC200SDAUTO-V4-46	Fixing Pin	2
47	PC200SDAUTO-V4-47	PCB	1
48	PC200SDAUTO-V4-48	Fixing Screw for PCB	2
49	PC200SDAUTO-V4-49	Inductance	1
50	PC200SDAUTO-V4-50	Inner Wire	1
51	PC200SDAUTO-V4-51	Power Cord	1
52	PC200SD-V4-47	Crevice Nozzle	1
53	PC200SD-V4-37	Floor Brush	1
54	PC200SD-V4-48	Noise Diffuser Muffler	1
55	PC200SDAUTO-V4-55	Power Tool Adaptor	1
56	PCU02	HEPA Filter for PC200 & PC300 Series	1

**NOTE:** It is our policy to continually improve products and as such we reserve the right to alter data, specifications and component parts without prior notice. There may be alternative versions of this product, please contact us should you require this information.

**IMPORTANT:** No liability is accepted for incorrect use of product. Spare parts must be fitted by a competent person

**WARRANTY:** Guarantee is 12 months from purchase date, proof of which will be required for any claim.

Sealey Group, Kempson Way, Suffolk Business Park, Bury St Edmunds, Suffolk. IP32 7AR



01284 757500



sales@sealey.co.uk



www.sealey.co.uk