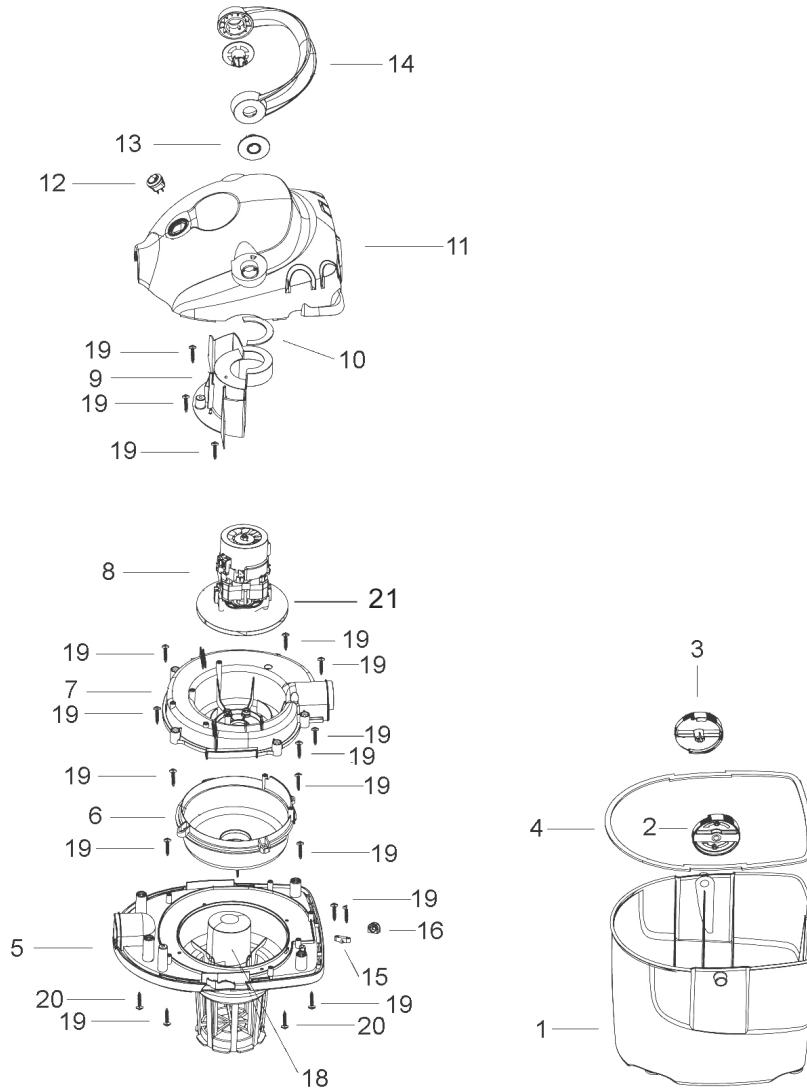




Parts Information:  
**Vacuum Cleaner Wet & Dry 10ltr**  
**1000W/230V**  
**Model No: PC100**



Item	Part No.	Description
1	PC100.01	TANK (SO)
2	PC100.02	LOCKING KNOB (A)
3	PC100.03	LOCKING KNOB (B)
4	PC100.04	SEAL
5	PC100.05	LOWER COVER
6	PC100.06	MOTOR SUPPORT
7	PC100.07	MIDDLE COVER
8	PC100.08	MOTOR
9	PC100.09	SEPERATOR
10	PC100.10	SEAL RING
11	PC100.11	UPPER COVER
12	PC100.12	SWITCH
13	PC100.13	HANDLE COVER
14	PC100.14	HANDLE

Item	Part No.	Description
15	PC100.15	CABLE CLAMP
16	PC100.16	CABLE PROTECT RING
18	PC100.18	CONTAINER
19	PC100.19	SCREW
20	PC100.20	SCREW (SPANNER TYPE)
21	PC100.21	IMPELLER
--	MC2CX0.75	MAINS CABLE BLK, 2 CORE, 0.75 MM2 (not shown)
--	PC100.ACC1	FLEXIBLE HOSE 1.2m (not shown)
--	PC100.ACC2	FOAM FILTER for PC100 (not shown)
--	PC100.ACC3	UPHOLSTERY NOZZLE (not shown)
--	PC100.ACC4	FILTER BAG for PC100 (not shown)
--	PC300SD.V3-54	CREVICE TOOL (not shown)

**NOTE:** It is our policy to continually improve products and as such we reserve the right to alter data, specifications and component parts without prior notice.

**IMPORTANT:** No liability is accepted for incorrect use of product.

**WARRANTY:** Guarantee is 12 months from purchase date, proof of which will be required for any claim.

**Sealey Group**, Kempson Way, Suffolk Business Park, Bury St Edmunds, Suffolk. IP32 7AR



01284 757500



01284 703534



sales@sealey.co.uk



www.sealey.co.uk