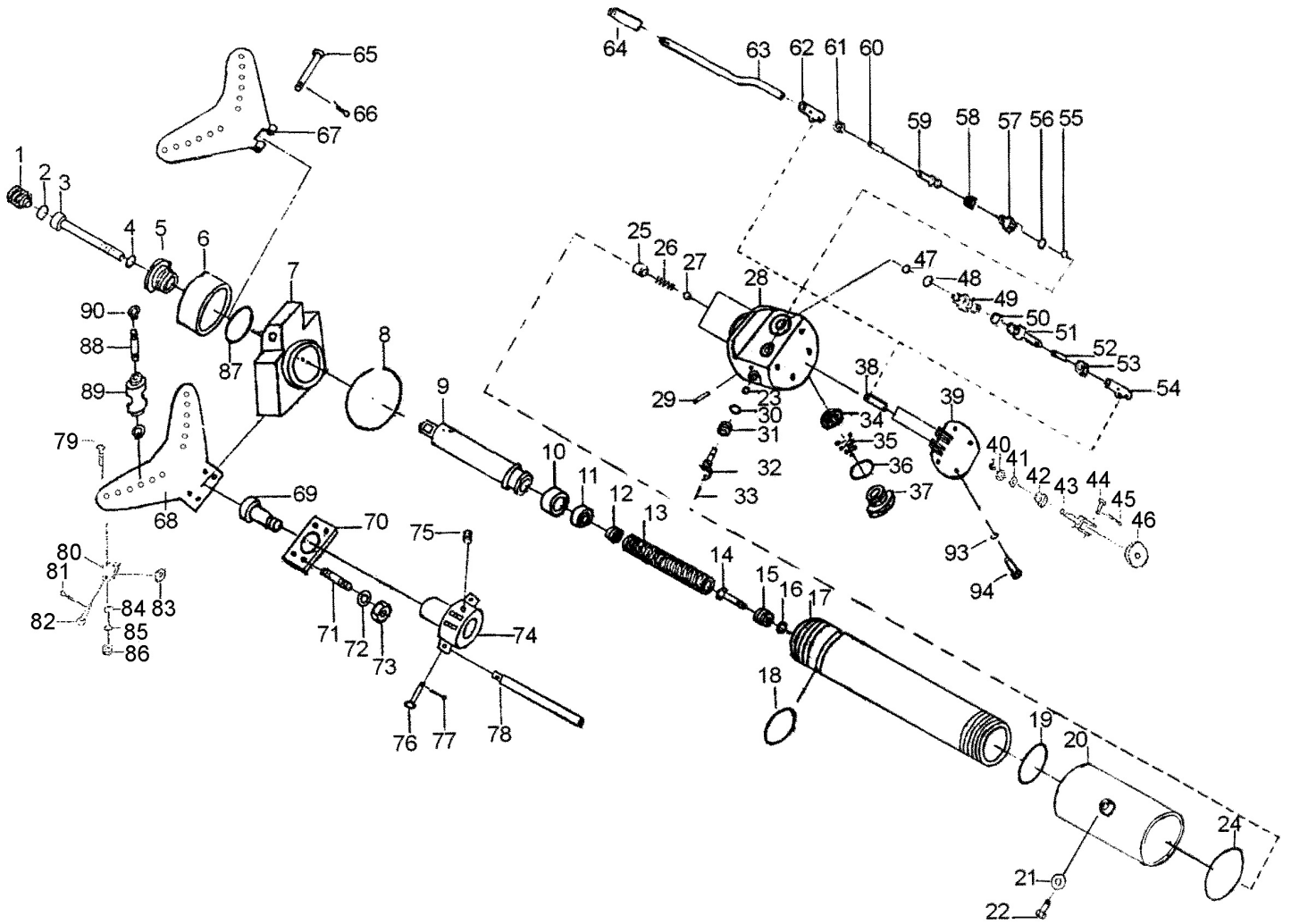


Parts Information:
**Industrial Hydraulic Pipe Bender with
 Stand 9tonne**
Model No: PBS90



Item	Part No.	Description
1	PBS90.01	Hex Screw Pin (M16 x 25)
2	PBS90.02	Copper Washer
3	SCB8100.SB	Socket Head Cap Screw M8x100 Black
--	SCB810.SB	Socket Head Cap Screw M8x10 Black (NOT SHOWN)
4	PBS90.04	O-Ring (10 x 1.9)
5	PBS90.05	Large Nut
6	PBS90.06	Large Nut
7	PBS90.07	Support
8	PBS90.08	O-Ring (100 x 3.1)

Item	Part No.	Description
9	PBS90.09	Hydraulic Piston
10	PBS90.10	Guide Ring
11	PBS90.11	Sealing Ring (50mm Dia)
12, 13 & 14	PBS90.13	Spring Assy (Includes Parts 12 & 14)
15	PBS90.15	Nut
16	PBS90.16	Spring Washer
17	PBS90.17	Cylinder Liner
18 & 19	PBS90.18	O-Ring (60 x 3.1)

NOTE: It is our policy to continually improve products and as such we reserve the right to alter data, specifications and component parts without prior notice.

IMPORTANT: No liability is accepted for incorrect use of product.

WARRANTY: Guarantee is 12 months from purchase date, proof of which will be required for any claim.



Parts Information:
**Industrial Hydraulic Pipe Bender with
 Stand 9tonne
 Model No: PBS90**

Item	Part No.	Description
20	PBS90.20	Cylinder Body
21	PBS90.21	Washer, Plastic
22	PBS90.22	Filing Screw
23	PBS90.23	Steel Ball 7mm
24	PBS90.08	O-Ring (100 x 3.1)
25	PBS90.25	Retainer
26	PBS90.26	Spring
27	SB-6.0	Steel Ball 6.0mm
28	PBS90.28	Back Support
29	PBS90.29	Pin (3 x 8)
30	PBS90.04	O-Ring (10 x 1.9)
31	PBS90.31	Screw
32	PBS90.32	Return Knob
33	PBS90.33	Pin (M4 x 16)
34	PBS90.34	Filter
35	PBS90.35	Spring
36	PBS90.36	O-Ring
37	PBS90.37	Screw Cap
38	PBS90.38	Plate Pin
39	PBS90.39	Back Cap
40	PBS90.40	Ring
41	PBS90.41	Washer M10
--	FWM10.S	Flat Washer M10 Single (NOT SHOWN)
42	PBS90.42	Screw
43	PBS90.43	Front Wheel Fork
44	PBS90.44	Axle (10 x 4.5)
45	PBS90.45	Pin (3 x 25)
46	PBS90.46	Wheel (62 x 10 x 20)
47	SB-6.0	Steel Ball 6.0mm
48	PBS90.48	O-Ring
49	PBS90.49	Pump, Low Pressure (100 kg/cm ²)
50	PBS90.50	Locking Retainer (28mm Dia)
51	PBS90.51	Large Piston
52	PBS90.52	Pin (6 x 30)
53	PBS90.53	Nut
54	PBS90.54	Bar Support
55	SB-6.0	Steel Ball 6.0mm
56	PBS90.56	O-Ring (26 x 2.4)
57	PBS90.57	Pump, High Pressure (630 kg/cm ²)
58	PBS90.58	Sealing Ring (16mm Dia)
59	PBS90.59	Small Piston
60	PBS90.52	Pin (6 x 30)

Item	Part No.	Description
61	PBS90.61	Nut
62	PBS90.62	Handle Support
63	PBS90.63	Handle
64	PBS90.64	Grip
65	PBS90.65	Axle For Plate
66	PBS90.66	Pin (3 x 40)
67	PBS90.67	Upper Plate
68	PBS90.68	Lower Plate
69	PBS90.69	Axle
70	PBS90.74	Leg Support + Plate
71	PBS90.71	Stud (M12 x 50)
72	FWM12.SB	Flat Washer M12 Black (Single)
73	SN12.SB	Steel Nut M12 Black (Single)
74	PBS90.74	Leg Support + Plate
75	PBS90.75	Stud (M10 x 12)
76	PBS90.76	Axle For Legs (8 x 30)
77	PBS90.45	Pin (3 x 25)
78	PBS90.78	Leg
79	PBS90.79	Screw (M6 x 20)
80	PBS90.80	Wheel Fork
81	PBS90.45	Pin (3 x 25)
82	PBS90.44	Axle (10 x 4.5)
83	PBS90.46	Wheel (62 x 10 x 20)
84	PBS90.84	Washer M6
--	FWM6.S	Flat Washer M6 Single (NOT SHOWN)
85	PBS90.85	Spring Washer (M6)
86	PBS90.86	Hex Screw (M6)
87	PBS90.18	O-Ring (60 x 3.1)
88	PBS90.88	Axle Of Supporting Roller
89	PBS90.89	Supporting Roller
90	PBS90.90	Circlip
--	PBS90.92	Washer (M8) (NOT SHOWN)
93	PBS90.93	Spring Washer (M8)
94	PBS90.94	Screw (M8 x 25)
--	PBS90.95	Bending Die 1/2" (NOT SHOWN)
--	PBS90.96	Bending Die 3/4" (NOT SHOWN)
--	PBS90.97	Bending Die 1" (NOT SHOWN)
--	PBS90.98	Bending Die 1-1/4" (NOT SHOWN)
--	PBS90.99	Bending Die 1-1/2" (NOT SHOWN)
--	PBS90.100	Bending Die 2" (NOT SHOWN)
--	PBS90.103	Complete Hydraulic Unit C/W Handle (NOT SHOWN)
--	PBS90.HANDLE	Handle For Pump (NOT SHOWN)

NOTE: It is our policy to continually improve products and as such we reserve the right to alter data, specifications and component parts without prior notice.

IMPORTANT: No liability is accepted for incorrect use of product.

WARRANTY: Guarantee is 12 months from purchase date, proof of which will be required for any claim.

Sealey Group, Kempson Way, Suffolk Business Park, Bury St Edmunds, Suffolk. IP32 7AR



01284 757500



01284 703534



sales@sealey.co.uk



www.sealey.co.uk