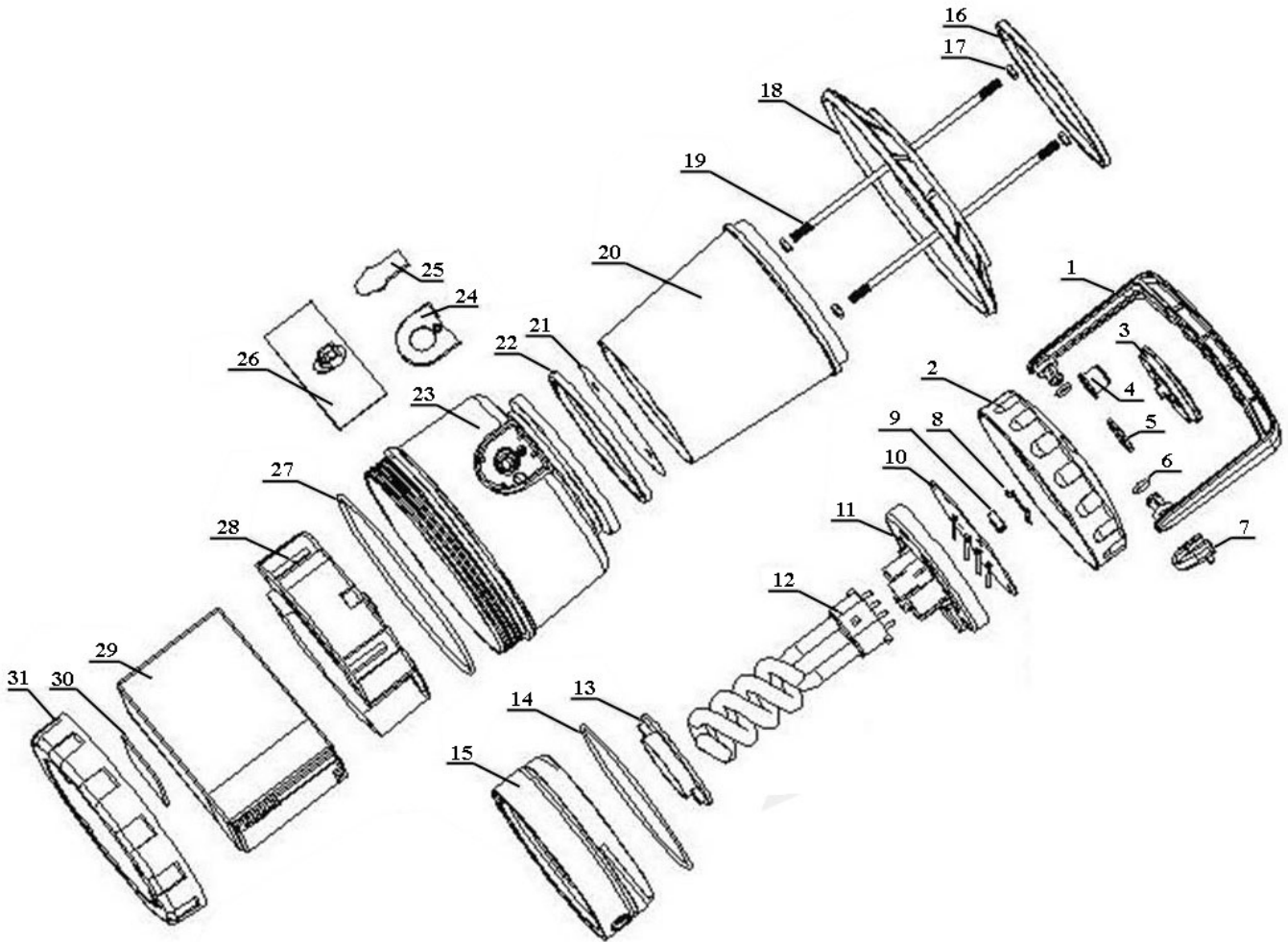


Parts Information:
Twin Fluorescent Rechargeable Lantern
12W with Remote Control
Model No: ML111.V2



Item	Part No.	Description
1	ML111.V2-01	HANDLE
2	ML111.V2-02	UPPER COVER
3	ML111.V2-03	SWITCH COVER
4	ML111.V2-04	POWER BUTTON
5	ML111.V2-05	HANDLE NUT
6	ML111.V2-06	O-RING
7	ML111.V2-07	REMOTE HOLDER
8	ML111.V2-08	POWER SWITCH CLIP
9	ML111.V2-09	POWER SWITCH BLOCK
10	ML111.V2-10	PCB FOR REMOTE CHARGE
11	ML111.V2-11	BULB BASE
12	ML111/SB	SPIRAL TUBE 12W/6V for ML111
13	ML111.V2-13	BULB HOLDER
14	ML111.V2-14	O-RING
15	ML111.V2-15	UPPER BASE
16	ML111.V2-16	O-RING
17	SN4.S	STEEL NUT M4 ZINC DIN934 (SINGLE)

Item	Part No.	Description
18	ML111.V2-18	SHADE
19	ML111.V2-19	SCREW
20	ML111.V2-20	LAMP SHADE
21	ML111.V2-21	REFLECTOR
22	ML111.V2-22	O-RING
23	ML111.V2-23	LOWER BASE
24	ML111.V2-24	CHARGER HOLDER
25	ML111.V2-25	CHARGER HOLDER COVER
26	ML111.V2-26	PCB
27	ML111.V2-27	O-RING
28	ML111.V2-28	BATTERY BASE
29	AK437V3-05	BATTERY (6V- SQUARE TYPE)
30	ML111.V2-30	SPONGE
31	ML111.V2-31	LOWER COVER
--	ML111.V2-C	MAINS CHARGER 6V 300MA (NOT SHOWN)
--	ML111.V2-CC	CIGARETTE CABLE (NOT SHOWN)
--	ML111.V2-RC	REMOTE CONTROL (NOT SHOWN)

NOTE: It is our policy to continually improve products and as such we reserve the right to alter data, specifications and component parts without prior notice.

IMPORTANT: No liability is accepted for incorrect use of product.

WARRANTY: Guarantee is 12 months from purchase date, proof of which will be required for any claim.