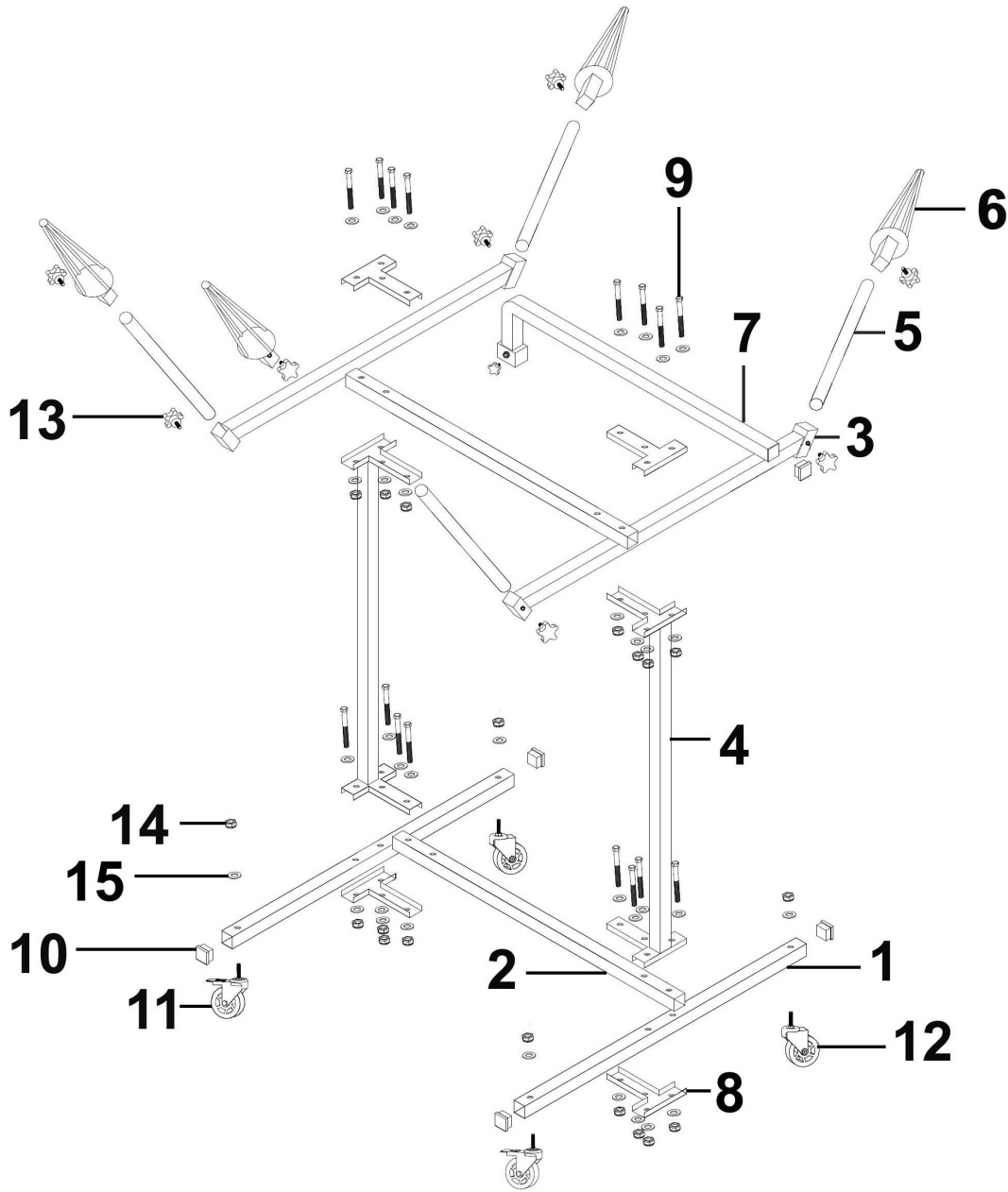


Parts Information:  
**Alloy Wheel Painting/Repair Stand Heavy-Duty - 4 Wheel Capacity**  
**Model No: MK71**



Item	Part No.	Description
1	MK71.01	Wheel Base Beam
2	MK71.02	Cross Beam
3	MK71.03	Side Support Beam for Cone
4	MK71.04	Upright Post
5	MK71.05	Support Bar for Cone
6	MK71.06	Cone
7	MK71.07	Handle
8	MK71.08	Lower Plate (T-Shape)

Item	Part No.	Description
9	MK71.09	Screw Set
10	MK71.10	Plastic End Cap
11	MK71.11	Castor (c/w Brake)
12	MK71.12	Castor
13	MK71.13	Threaded Knob
14	NLN10.S	Nyloc Nut M10 Zinc
15	FWM10.S	Flat Washer M10 Zinc

**NOTE:** It is our policy to continually improve products and as such we reserve the right to alter data, specifications and component parts without prior notice. There may be alternative versions of this product, please contact us should you require this information.

**IMPORTANT:** No liability is accepted for incorrect use of product. Spare parts must be fitted by a competent person

**WARRANTY:** Guarantee is 12 months from purchase date, proof of which will be required for any claim.