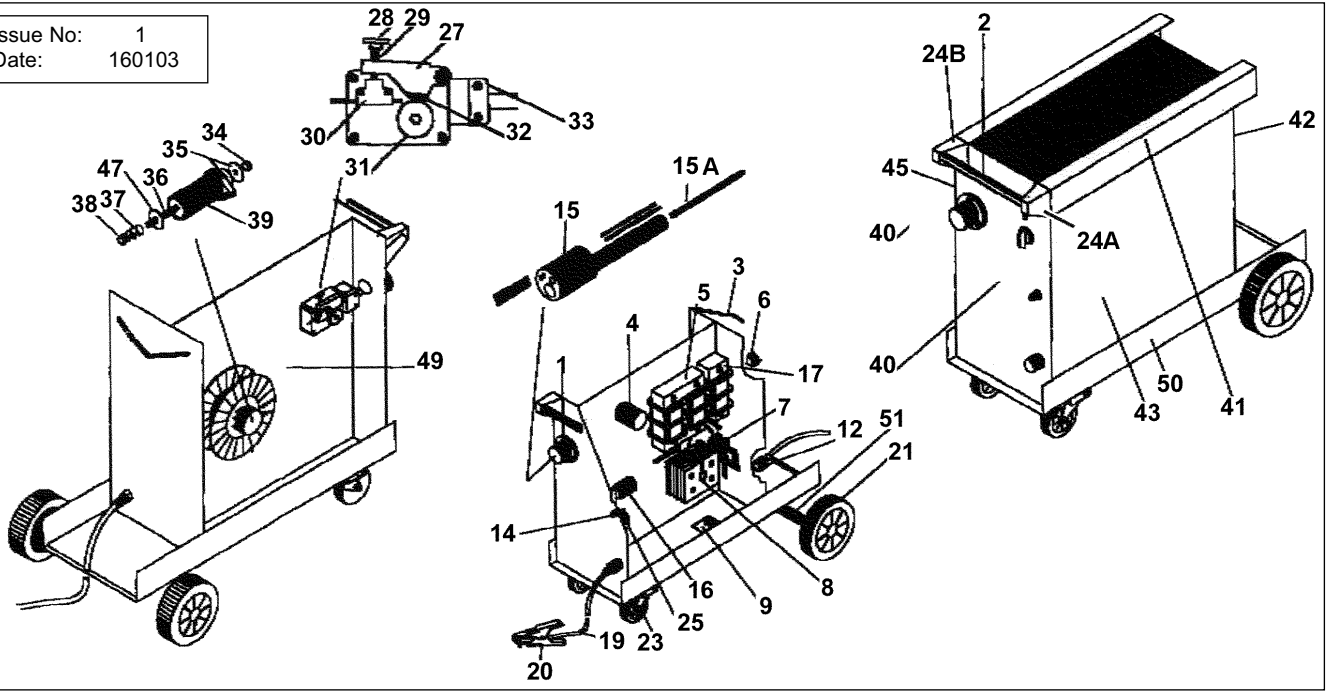
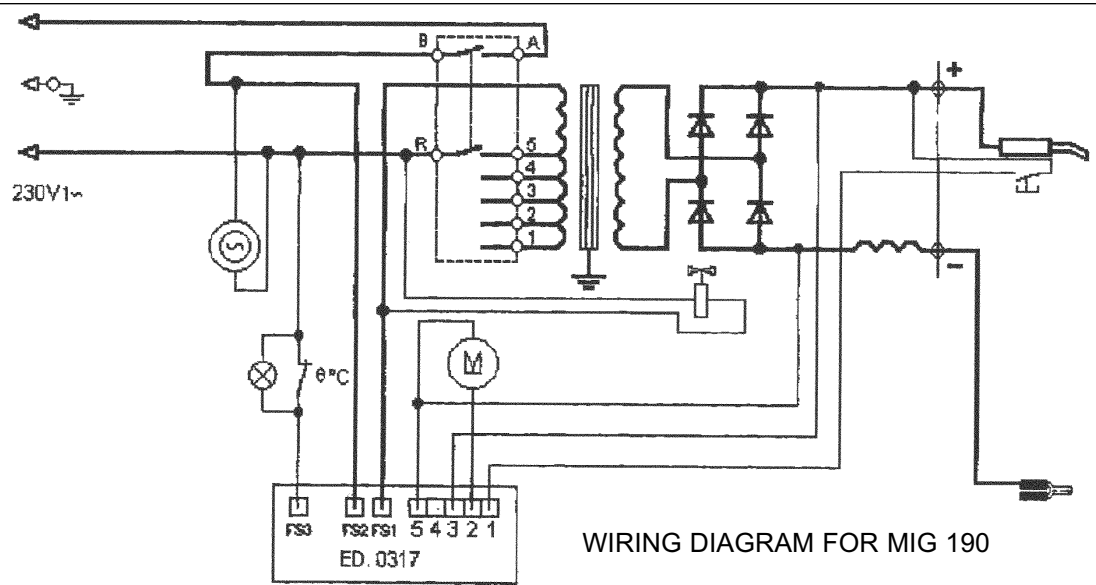


Issue No: 1
Date: 160103



Item	Part No	Description
1	331.01503350	Euro connector protector
2	331.10045262N	Handle
3	331.04501017	Chain
4	331.00601035	Wire feed motor
5	331.19060610	Power transformer
6	331.01401025	Solenoid valve
7	331.02301025	Fan
8	331.00901230	Rectifier
14	331.03402010	Knob
15	331.01503305	Central connection
15A	331.01503325	Pipe 5x2x131
16	331.00704190	Commutator
17	331.19440519	Reactor MIG 190cc
19	331.14230164	Earth cable
20	331.01505150	Earth clamp
21	331.02201175	Wheel, diameter 175mm
23	331.02202180	Wheel, diameter 80mm
24A	331.03401015R	Handle bracket, right
24B	331.03401015L	Handle bracket, left
25	331.01001025	Electronic card
27	331.00601908	Wire feed lever

Item	Part No	Description
28	331.00601909	Wire lock screw
30	331.00601912	Sheath lock
31	331.02110050	Roller, 0.6mm & 0.8mm
32	331.00601911	Bearing
33	331.00601913	Centre connection lock
34	331.0301510Z	Nut
35	331.030211040Z	Washer
36	331.02110010	Reel holder pin
37	331.02120300	Spring
38	331.03017120	Nut
39	331.02104850	Reel holder
40	331.104A448N187	Front panel
41	331.104A405N	Lid
42	331.104A403N	Rear panel
43	331.104A407N	Side
45	331.104A406N	Door
47	331.0302012Z	Washer
48	331.01501424	Torch, 424 plus (not shown)
49	331.104A402N	Partition panel
50	331.104A401N	Bottom
51	331.10040440	Wheel axle



WIRING DIAGRAM FOR MIG 190

Sole UK Distributor, Sealey Group, Bury St. Edmunds, Suffolk.

