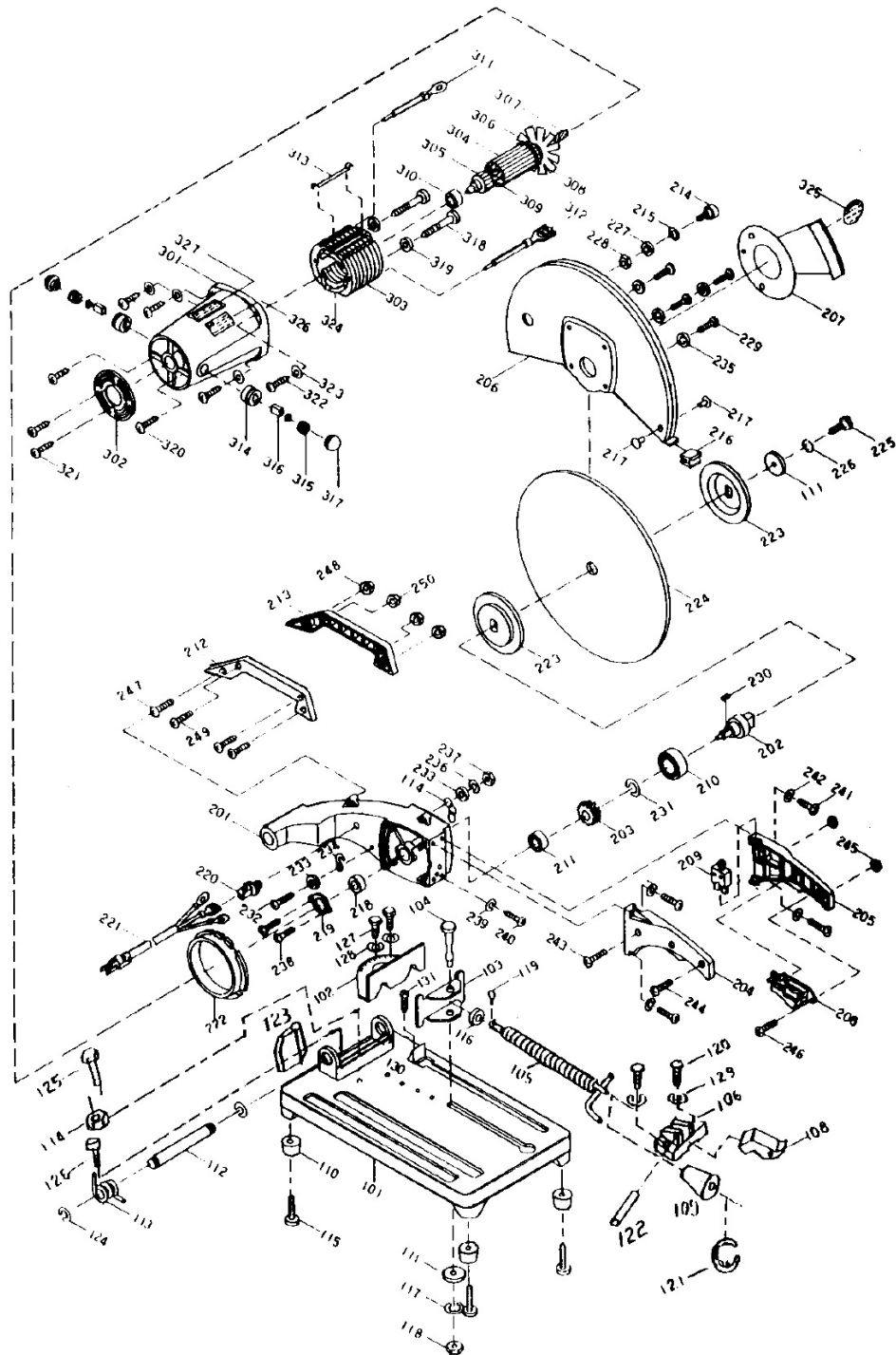


Parts Information:  
**Cut-Off Machine 355mm 110V Portable**  
**Model No: MG214/110V**



**NOTE:** It is our policy to continually improve products and as such we reserve the right to alter data, specifications and component parts without prior notice.

**IMPORTANT:** No liability is accepted for incorrect use of product.

**WARRANTY:** Guarantee is 12 months from purchase date, proof of which will be required for any claim.

Item	Part No.	Description
101	MG214/101	Base
102	MG214/102	Clamp (a)
103	MG214/103	Clamp (b)
104	MG214/104	Shaft,clamp
105	MG214/105	Screw, lead
106	MG214/106	Nut,vice
107	MG214/107	Cover, dust
108	MG214/108	Nut, quick release
109	MG214/109	Handle
110	MG214/110	Pad, rubber
111	MG214/111	Washer
112	MG214/112	Shaft
113	MG214/113	Spring
114	MG214/114	Nut
115	MG214/115	Screw
116	MG214/116	Washer
117	MG214/117	Washer, spring
118	MG214/118	Nut, hex
119	MG214/119	Pin
120	MG214/120	Screw hex head
121	MG214/121	Ring, retaining
122	MG214/122	Pin
123	MG214/123	Plate, bracket clamp
124	MG214/124	Ring, retaining
125	MG214/125	Screw, hex
126	MG214/126	Screw, hex
127	MG214/127	Screw, hex
128	MG214/128	Washer, spring
129	MG214/120	Screw hex head
130	MG214/130	Board
131	MG214/131	Screw
201	MG214/201	Housing
202	MG214.V2-030	Shaft
203	MG214/203	Gear
204	MG214/204	Handle, left
205	MG214/205	Handle, right
206	MG214/206	Spring
207	MG214/207	Cover
208	MG214/208-230	Switch, on/off (230v)
209	MG214/209	Switch, overload
210	B/6006ZZ	Bearing 6006zz
211	B/608ZZ	Bearing 608zz
212	MG214/212	Crank, right
213	MG214/213	Crank, left
214	MG214/214	Screw
215	MG214/215	Cover
216	MG214/216	Pad

Item	Part No.	Description
217	MG214/217	Screw
218	MG214/218	Bearing
219	MG214/219	Cover bearing
220	MG214/220	Strain relief
221	MG214/221	Plug
223	MG214/223	Flange
224	PTC/355C	Cutting Disc Ø355 x 3mm 25.4mm Bore
226	MG214/226	Washer, spring
227	MG214/227	Screw
228	MG214/228	Guard, safety
230	MG214/230	Key
231	MG214/231	Ring,retaining
232	MG214/232	Screw
233	MG214/233	Washer
234	MG214/234	Hook, chain
236	MG214/236	Washer
237	MG214/237	Nut, hex
238	MG214/238	Screw
239	MG214/239	Washer
240	MG214/240	Screw
241	MG214/241	Screw
242	MG214/242	Washer
243	MG214/243	Screw
244	MG214/244	Screw
245	MG214/245	Nut, hex
246	MG214/246	Screw
247	MG214/247	Screw
248	MG214/248	Nut, hex
249	MG214/249	Screw
250	MG214/250	Nut, hex
301	MG214/301	Housing
302	MG214/302	Cover, rear
303	MG214/303-110	Field coil assembly 110v
304	MG214/304-110	Armature 110v (green)
310	B/6200ZZ	Bearing 6200zz
313	MG214/313	Holder, stator
314	MG214/314	Holder, carbon brush
315	MG214/315	Cap, brush
316	MG214.V2-006	Carbon brush (single)
317	MG214/317	Cover, dust
318	MG214/318	Screw
319	MG214/319	Screw
320	MG214/320	Screw, hex
321	MG214/321	Screw
322	MG214/322	Screw
323	MG214/323	Washer
329	MG214/329	Screw 5x12

**NOTE:** It is our policy to continually improve products and as such we reserve the right to alter data, specifications and component parts without prior notice.

**IMPORTANT:** No liability is accepted for incorrect use of product.

**WARRANTY:** Guarantee is 12 months from purchase date, proof of which will be required for any claim.

**Sealey Group**, Kempson Way, Suffolk Business Park, Bury St Edmunds, Suffolk. IP32 7AR



01284 757500



01284 703534



sales@sealey.co.uk



www.sealey.co.uk