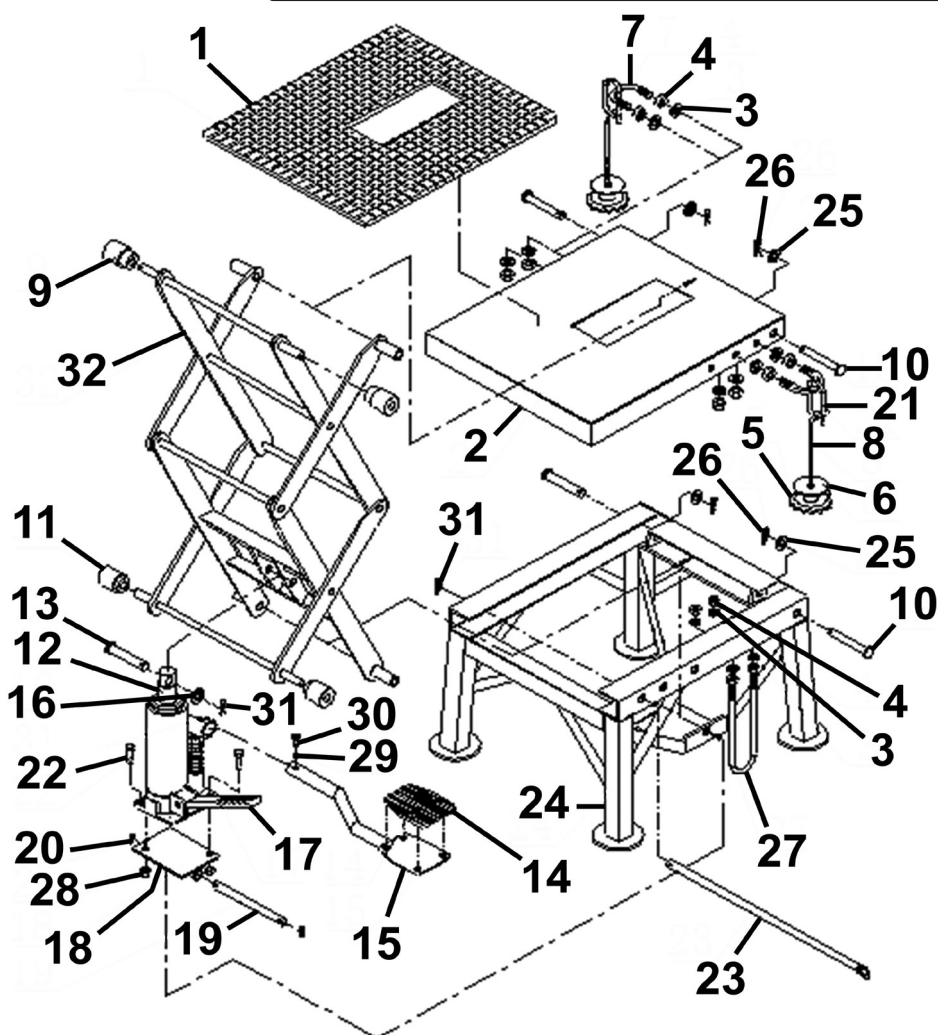


Parts Information: Hydraulic Motorcycle Lift Off-Road/Trials Bikes 135kg Capacity Model No: MC135.V2



Item	Part No.	Description	Qty
1	MC135-V2-01	Rubber Plate	1
2	MC135-V2-02	Platform	1
3	FWM8.S	Flat Washer M8 Zinc	12
4	SN8.S	Steel Nut M8 Zinc	12
5	MC135-V2-05	Knob, Threaded Female Fitting	2
6	MC135-V2-06	Repair Washer	2
7	MC135-V2-07	U-Bolt	2
8	MC135-V2-08	J-Hook	2
9	MC135-V2-09	Upper Roller	2
10	MC135-V2-10	Pin Ø12 x 80	4
11	MC135-V2-11	Lower Roller	2
12	MC135-V2-12	Pump	1
13	MC135-V2-13	Pin Ø12 x 65	1
14	MC135-V2-14	Rubber Pad (for Foot Pedal)	1
15	MC135-V2-15	Foot Pedal	1
16	FWM12.S	Flat Washer M12 Zinc	1

17	MC135-V2-17	Release Valve, Foot Pedal	1
18	MC135-V2-18	Mounting Plate	1
19	MC135-V2-19	Mounting Plate Pin Ø12 x 155	1
20	MC135-V2-20	R-Pin	2
21	MC135-V2-21	Pulling Tab	2
22	SS825.S	Hex Head Set Screw M8 X 25 Zinc	2
23	MC135-V2-23	Locking Bar	1
24	MC135-V2-24	Base Frame	1
25	FWM12.S	Flat Washer M12 Zinc	4
26	MC135-V2-26	Split Pin	4
27	MC135-V2-27	U-Bolt Limit Assembly	1
28	NLN8.S	Nyloc Nut M8 Zinc	2
29	FWM8.S	Flat Washer M8 Zinc	1
30	SS812.S	Hex Head Set Screw M8 X 12 Zinc	1
31	MC135-V2-31	R-Pin	2
32	MC135-V2-32	Lift Arm Assembly	1

NOTE: It is our policy to continually improve products and as such we reserve the right to alter data, specifications and component parts without prior notice. There may be alternative versions of this product, please contact us should you require this information.

IMPORTANT: No liability is accepted for incorrect use of product. Spare parts must be fitted by a competent person

WARRANTY: Guarantee is 12 months from purchase date, proof of which will be required for any claim.