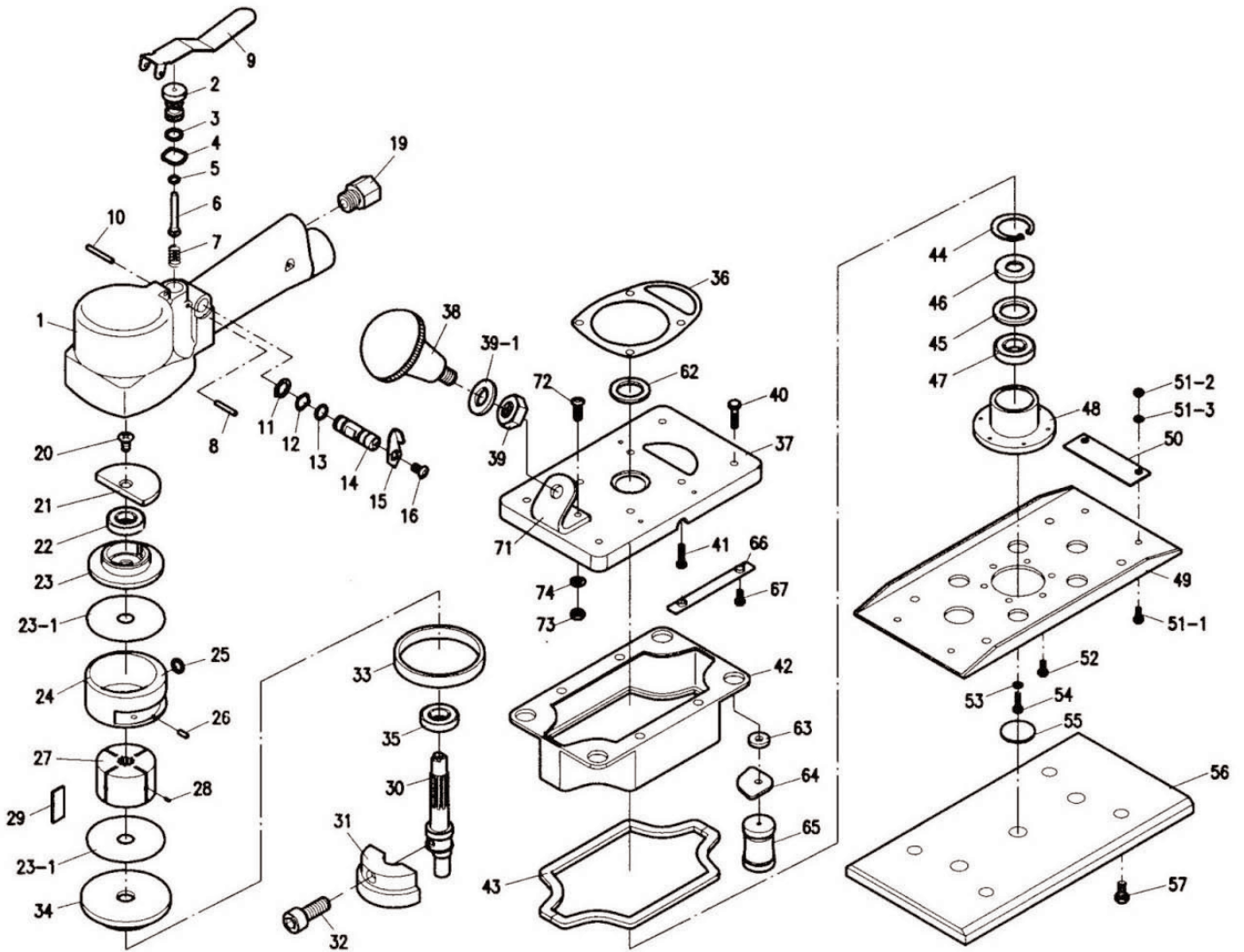




Parts Information:
Air Sander Random Orbital Dust-Free 220
x 112mm
Model No: MAT110AS



NOTE: It is our policy to continually improve products and as such we reserve the right to alter data, specifications and component parts without prior notice.

IMPORTANT: No liability is accepted for incorrect use of product.

WARRANTY: Guarantee is 12 months from purchase date, proof of which will be required for any claim.

Sealey Group, Kempson Way, Suffolk Business Park, Bury St Edmunds, Suffolk. IP32 7AR



01284 757500



01284 703534



sales@sealey.co.uk



www.sealey.co.uk



Parts Information:
**Air Sander Random Orbital Dust-Free 220
x 112mm**
Model No: MAT110AS

Item	Part No.	Description
1	MAT110AS.01	BODY
2	MAT110AS.02	VALVE PIN SLEEVE
3	MAT110AS.03	O-RING (P8)
4	MAT110AS.04	CRINKLE WASHER
5	MAT110AS.05	O-RING (4x7)
6	MAT110AS.06	VALVE
7	MAT110AS.07	VALVE SPRING
8	MAT110AS.08	NEEDLE PIN (3x18)
9	MAT110AS.09	VALVE LEVER
10	MAT110AS.10	SPRING PIN M3X20
11	MAT110AS.11	SNAP RING
12	MAT110AS.12	WAVE WASHER
13	MAT110AS.25	O-RING (P6)
14	MAT110AS.14	REGULATOR
15	MAT110AS.15	REGULATOR LEVER
16	MAT110AS.16	SCREW (M4x6)
19	MAT110AS.19	COUPLING 1/4"
20	MAT110AS.20	SCREW (M5x12)
21	MAT110AS.21	COUNTERBALANCE
22	B/6200ZZ	BEARING 6200ZZ
23	MAT110AS.23	BEARING HOLDER
23-1	MAT110AS.23-1	SIDE PLATE
24	MAT110AS.24	CYLINDER
25	MAT110AS.25	O-RING (P6)
26	MAT110AS.26	SPRING PIN (3x5)
27	MAT110AS.27	ROTOR
28	MAT110AS.28	VANE SPRING
29	MAT110AS.29	ROTOR VANE
30	MAT110AS.30	ROTOR SHAFT
31	MAT110AS.31	COUNTERBALANCE
32	MAT110AS.32	CAP SCREW (M5x25)
33	MAT110AS.33	SPACER
34	MAT110AS.34	BEARING CASE
35	B/6201ZZ	BEARING 6201ZZ
36	MAT110AS.36	MOTOR GASKET

Item	Part No.	Description
37	MAT110AS.37	BASE PLATE
38	MAT110AS.38	KNOB
39	MAT110AS.39	NUT (3/8")
39-1	MAT110AS.39-1	SPRING WASHER (3/8")
40	MAT110AS.40	SCREW (M5x15)
41	MAT110AS.41	SCREW (M5x15)
42	MAT110AS.42	COVER
43	MAT110AS.43	COVER GASKET
44	MAT110AS.44	SNAP RING (R26)
45	MAT110AS.45	FELT RING
46	MAT110AS.46	DUST SEAL
47	B/6000-2RS	BEARING 6000-2RS
48	MAT110AS.48	BEARING CASE
49	MAT110AS.49	BACKING PLATE
50	MAT110AS.50	PAPER LOCK
51-1	MAT110AS.51-1	SCREW (M4x8)
51-2	SN4.S	STEEL NUT M4 ZINC DIN934 (SINGLE)
51-3	MAT110AS.51-3	WASHER
52	MAT110AS.52	SCREW (M4x8)
53	MAT110AS.53	WASHER
54	MAT110AS.54	SCREW (M5x10)
55	MAT110AS.55	PACKING
56	MAT110AS.56-1	BACKING PAD
57	MAT110AS.57	SCREW (M5x10)
62	MAT110AS.62	FELT RING
63	MAT110AS.63	SMALL THICK WASHER M5
64	MAT110AS.64	CLAMP
65	MAT110AS.65	SUPPORT
66	MAT110AS.66	GASKET
67	MAT110AS.67	SCREW (M4x6)
71	MAT110AS.71	BRACKET
72	MAT110AS.72	HEX SCREW (M4x12)
73	SN4.S	STEEL NUT M4 ZINC DIN934 (SINGLE)
74	MAT110AS.74	WASHER

NOTE: It is our policy to continually improve products and as such we reserve the right to alter data, specifications and component parts without prior notice.

IMPORTANT: No liability is accepted for incorrect use of product.

WARRANTY: Guarantee is 12 months from purchase date, proof of which will be required for any claim.

Sealey Group, Kempson Way, Suffolk Business Park, Bury St Edmunds, Suffolk. IP32 7AR



01284 757500



01284 703534



sales@sealey.co.uk



www.sealey.co.uk