

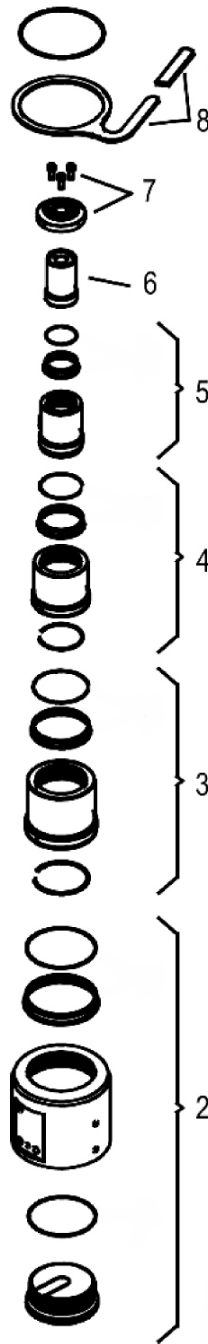
Item	Part No.	Description
9	N15-4C-1104M	HYDRAULIC BASE ASS'Y
10	N20-3C-C53M	BASE ASS'Y
11	NP15-2B-C11	RELEASE ASS'Y
12	N20-3C-C11	HOSE CONNECTION ASS'Y
13	N15-4-C8	PUMP PISTON (c/w SPRING)
14	N20-3C-C27	CYLINDER ASS'Y
15	N20-3/1213	WHEEL, FIXED (157x20x38)
16	N15-4C-C28M	FRAME ASS'Y

Item	Part No.	Description
17	N15-4C-C52	COVER
18	N15-2C-C21	HANDLE ASS'Y COMPLETE
19	A-5212	EXTENSION
10	N10-3-C96	HOSE CONNECTOR
21	N20-3C-C39	PNEUMATIC VALVE ASS'Y
22	NP15-2B-C71	BLOCK CONNECTOR ASS'Y
--	RN15-4C	REPAIR KIT (NOT SHOWN)

NOTE: It is our policy to continually improve products and as such we reserve the right to alter data, specifications and component parts without prior notice.

IMPORTANT: No liability is accepted for incorrect use of product.

WARRANTY: Guarantee is 12 months from purchase date, proof of which will be required for any claim.



Item	Part No.	Description
2	N15-4C-C25	HYDRAULIC UNIT ASS'Y
3	N15-4-1105M	PISTON ASS'Y (LOWER)
4	N15-4-1145M	PISTON
5	N15-4-1146M	PISTON

Item	Part No.	Description
6	N15-4-1147	PISTON
7	N15-4-C17	BEARING (c/w SCREWS)
8	N15-4C-C16	HYDRAULIC HANDLE GRIP ASS'Y

NOTE: It is our policy to continually improve products and as such we reserve the right to alter data, specifications and component parts without prior notice.

IMPORTANT: No liability is accepted for incorrect use of product.

WARRANTY: Guarantee is 12 months from purchase date, proof of which will be required for any claim.