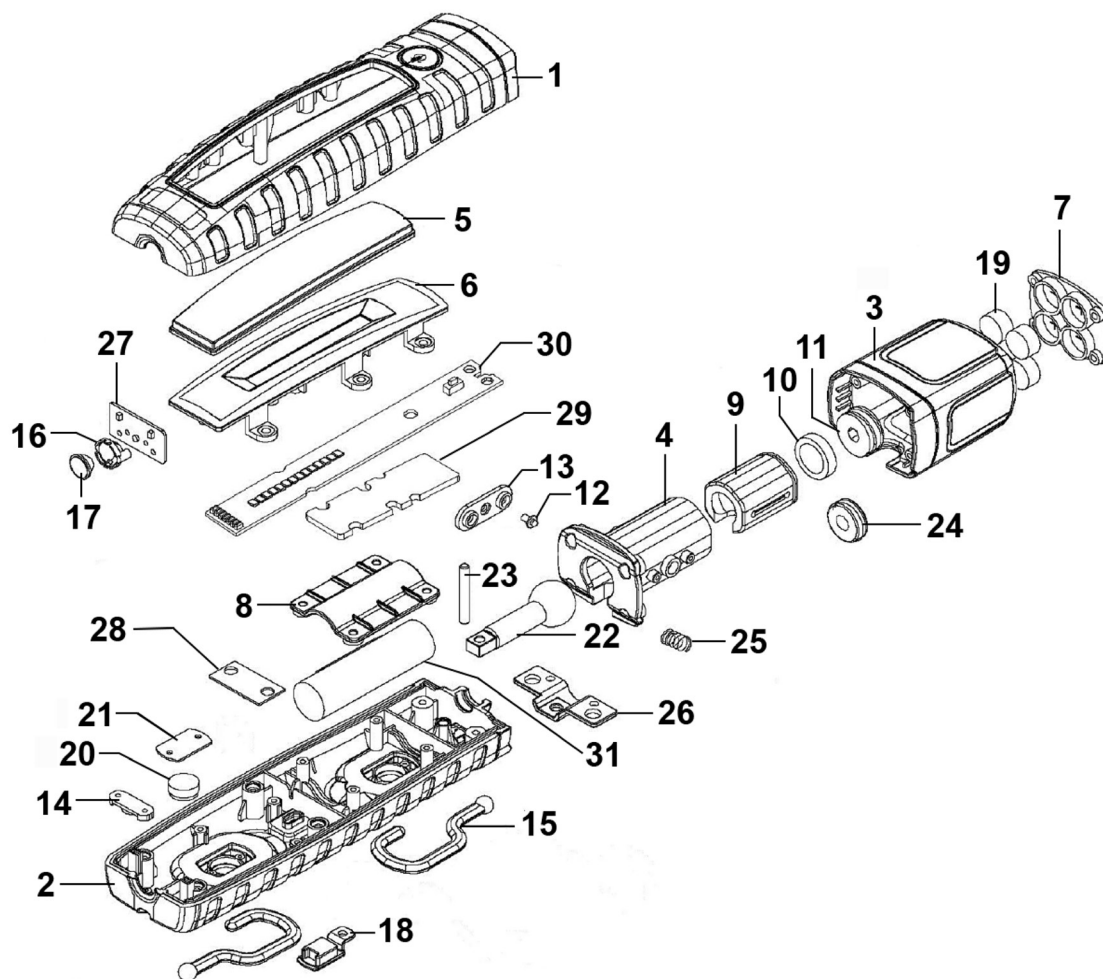


Parts Information: Rechargeable 360° Inspection Light 8W & 3W SMD LED - Red Model No: LED360R.V5



Item	Part No.	Description
1	LED360R.V3-01	Front Housing 'Red'
2	LED360R.V3-02	Back Housing 'Red'
3	LED360PLUSR03	Handle 'Red'
4	LED360PLUS.04	Rotating Support (Large)
5	LED360.V2-07	Lens, Front
6	LED360V5.08	Plastic Reflector
7	LED360.V2-09	Bottom Cover
8	LED360.V3-08	Battery Cover
9	LED360.V2-14	Rotating Support (Upper)
10	LED360.V2-04	Ball Support (Lower)
11	LED360.V2-05	Ball Support (Upper)
12	LED360.V2-17	Pin
13	LED360.V2-16	Rotating Support
14	LED360.V2-10	Hook Support
15	LED360.V2-06	Hook, Top
16	LED360PLUS.15	Head Lens Solid Board
17	LED360PLUS.16	Head Lens

Item	Part No.	Description
18	LED360PLUS.18	Charger Socket Cover
19	LED360.13	Magnet
20	LED360.V2-25	Back Housing Magnet
21	LED360.V2-19	Magnet Support
22	LED360.V2-20	Rotating Ball
23	LED360.V2-21	Rotating Ball Pin
24	LED360.V2-22	Wave Spring
25	LED360.V2-23	Spring Dia 5.16mm
26	LED360PLUS.34	Pivot Board
27	LED360PLUS.30	Head Led
28	LED360.V3-28	USB Charging PCB
29	LED360V5.29	Cooling Board
30	LED360V5.30	PCB, 14SMD, 130 x 18mm, 14 LED
31	LED3604.30	Battery Li-Ion 3.7V 2600mAh 9.6Wh (19 x 65mm)(c/w Connector)
--	LED3602G.41	USB Cable, (USB - Micro USB) 920mm (Not Shown)

NOTE: It is our policy to continually improve products and as such we reserve the right to alter data, specifications and component parts without prior notice. There may be alternative versions of this product, please contact us should you require this information.

IMPORTANT: No liability is accepted for incorrect use of product. Spare parts must be fitted by a competent person

WARRANTY: Guarantee is 12 months from purchase date, proof of which will be required for any claim.