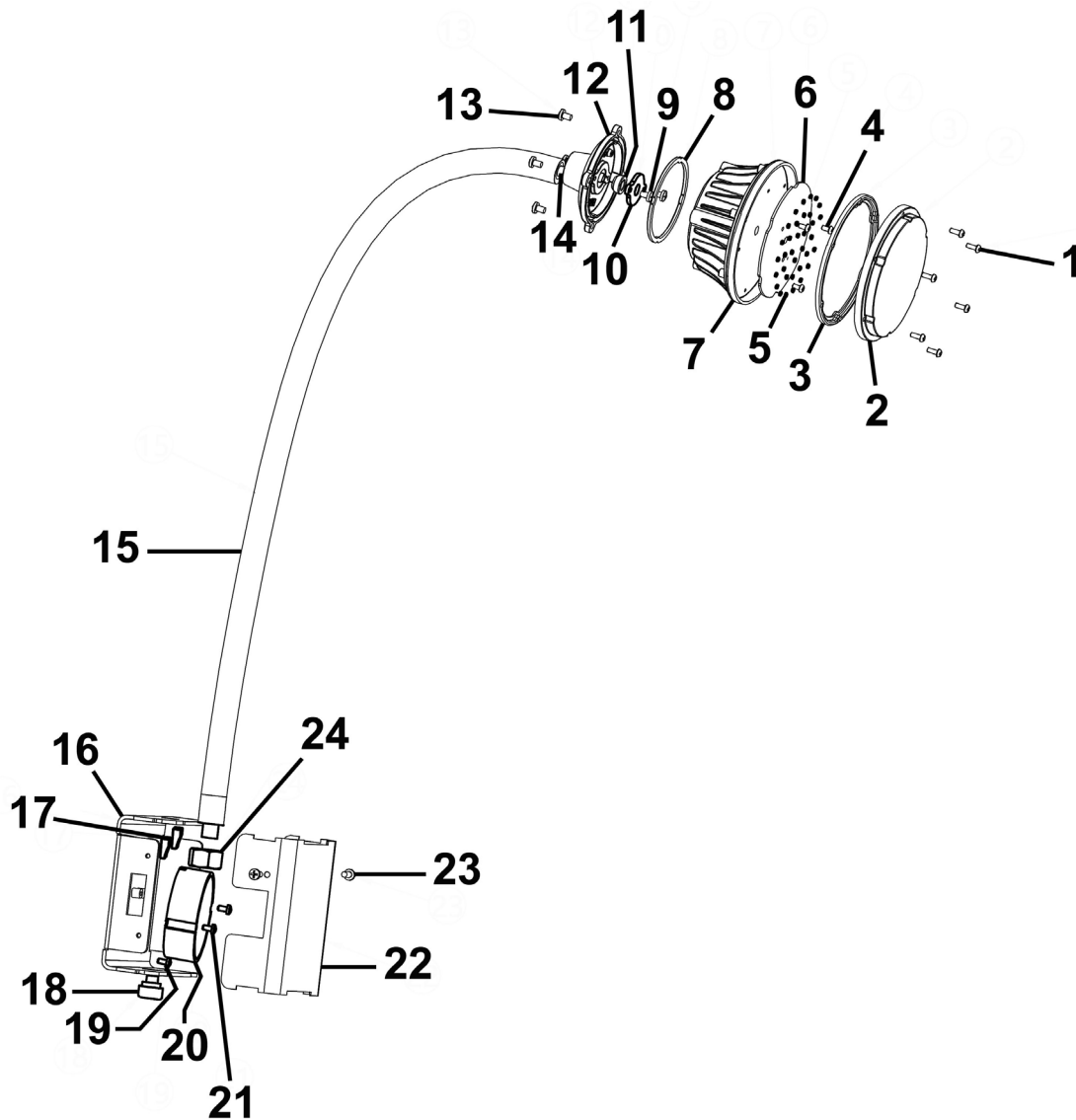


Parts Information: Loading Bay Floodlight with Flexible Arm 20W SMD LED Model No: LED20WDL



Item	Part No.	Description	Qty
1	LED20WDL-01	Self-Tapping Screw M3x10	6
2	LED20WDL-02	Lens	1
3	LED20WDL-03	Lens Seal	1
4	LED20WDL-04	Self-Tapping Screw M3x5	3
5	LED20WDL-05	LED	35
6	LED20WDL-06	PCB	1
7	LED20WDL-07	Body	1
8	LED20WDL-08	Back Cover Seal	1
9	LED20WDL-09	Flat Head Screw M4x8	2
10	LED20WDL-10	Waterproof Plug (A)	1
11	LED20WDL-11	Waterproof Plug (B)	1
12	LED20WDL-12	Main Body Back Cover	1

Item	Part No.	Description	Qty
13	LED20WDL-13	Flat Head Screw M4x14	4
14	LED20WDL-14	Power Cord	1
15	LED20WDL-15	Neck	1
16	LED20WDL-16	Junction Box Base (A)	1
17	LED20WDL-17	Plug Terminal	4
18	LED20WDL-18	Waterproof Joint	1
19	LED20WDL-19	Self-Tapping Screw M4x4	1
20	LED20WDL-20	Power Supply Unit	1
21	LED20WDL-21	Junction Box Base (B)	1
22	LED20WDL-22	Junction Box Cover	1
23	LED20WDL-23	Knurled Thumb Screw M4x8mm	2
24	SN12.S	Steel Nut M12 Zinc	1

NOTE: It is our policy to continually improve products and as such we reserve the right to alter data, specifications and component parts without prior notice. There may be alternative versions of this product, please contact us should you require this information.

IMPORTANT: No liability is accepted for incorrect use of product. Spare parts must be fitted by a competent person

WARRANTY: Guarantee is 12 months from purchase date, proof of which will be required for any claim.