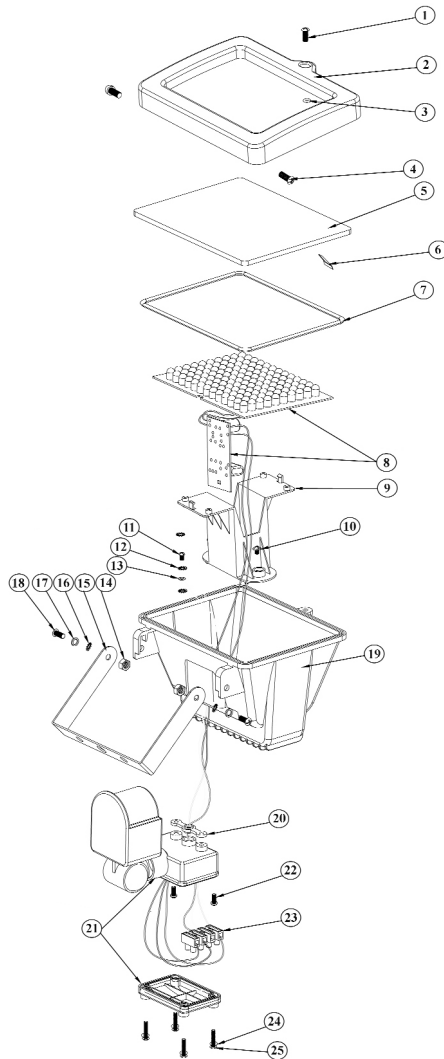




Parts Information:  
**Floodlight with Wall Bracket & PIR Sensor**  
**130 LED 230V**  
**Model No: LED130S.V2**



Item	Part No.	Description
1	LED130S.V2-01	SCREW (M5x18)
2	LED130S.V2-02	FRAME
3	LED130S.V2-03	O-RING (8x1.9)
4	LED130S.V2-04	SCREW (4x10)
5	LED130.V2-05	GLASS (177.5x143x5)
6	LED130.V2-06	GLASS CLIP
7	LED130.V2-07	SEAL GASKET
8	LED130S.V2-08	LED ASS'Y
9	LED130.V2-09	PLASTIC BRACKET
10	LED130.V2-10	SCREW (c/w WASHER)
11	LED130.V2-11	SCREW (M4x6)
12	LED130S.V2-12	TOOTH WASHER (6mm)
13	LED130S.V2-13	WIRING

Item	Part No.	Description
14	LED130.V2-14	SCREW (M6)
15	LED130S.V2-15	MOUNTING BRACKET
16	LED130S.V2-16	WASHER (6mm)
17	LED130.V2-17	WASHER (6mm)
18	LED130.V2-18	SCREW (M6x14)
19	LED130.V2-19	LAMP BODY
20	LED130.V2-20	WIRE CLAMP
21	LED130S.V2-21	SENSOR (c/w COVER)
22	LED130S.V2-22	SCREW (M4x14)
23	LED130S.V2-23	TERMINAL BLOCK
24	LED130S.V2-24	O-RING (3.5x18)
25	LED130S.V2-25	SCREW (3.5x18)

**NOTE:** It is our policy to continually improve products and as such we reserve the right to alter data, specifications and component parts without prior notice.

**IMPORTANT:** No liability is accepted for incorrect use of product.

**WARRANTY:** Guarantee is 12 months from purchase date, proof of which will be required for any claim.

**Sealey Group**, Kempson Way, Suffolk Business Park, Bury St Edmunds, Suffolk. IP32 7AR



01284 757500



01284 703534



sales@sealey.co.uk



www.sealey.co.uk