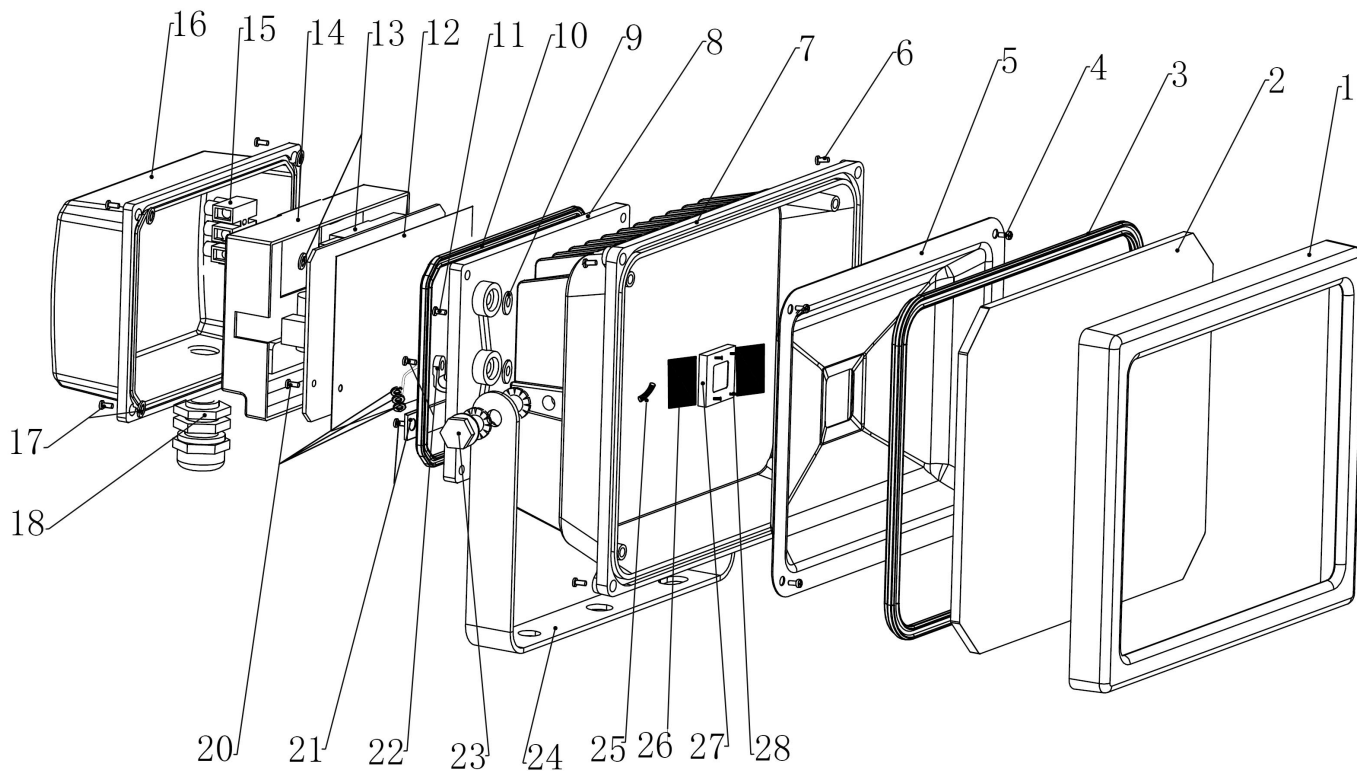


Parts Information:
**Floodlight with Wall Bracket 20W COB LED
 230V**
Model No: LED120



Item	Part No.	Description
1	LED120S.01	FRAME
2	LED120S.02	GLASS (175x135mm)
3	LED120S.03	SEAL GASKET
4	LED120S.04	SCREW
5	LED120S.05	REFLECTOR
6	LED120S.06	SCREW
7	LED120.07	LAMP BODY
8	LED120S.08	CONNECTION BOX (BOTTOM)
9	LED120S.09	CLIP
10	LED120S.10	CONNECTION BOX SEAL
12	MSP410.S	MACHINE SCREW PAN HEAD PHILLIPS M4x10mm
13	LED120S.12	BACKING PAD
13	LED120S.13	STARTER POWER
--	LED120S.13A	CLIP (NOT SHOWN)
14	LED120S.14	STARTER COVER
15	LED120.15	TERMINAL BLOCK
16	LED120.16	BOX COVER
17	MSP412.S	MACHINE SCREW PAN HEAD PHILLIPS M4x12mm
--	LED120S.17A	O-RING (NOT SHOWN)
18	LED120S.18	CABLE GRIP

Item	Part No.	Description
19	MSP36.S	MACHINE SCREW PAN HEAD PHILLIPS M3x6mm
20	LED120S.20A	EARTH WIRE
--	MSP412.S	MACHINE SCREW PAN HEAD PHILLIPS M4x12mm (NOT SHOWN)
--	LED120S.20B	CLIP (NOT SHOWN)
--	LED120S.20C	CLIP (NOT SHOWN)
21	MSP46.S	MACHINE SCREW PAN HEAD PHILLIPS M4x6mm
--	LED120S.21B	FIXED BOARD (NOT SHOWN)
--	LED120S.22	CLIP (NOT SHOWN)
--	MSP410.S	MACHINE SCREW PAN HEAD PHILLIPS M4x10mm
23	LED120S.23	ADJUST SCREW
--	LED120S.23A	CLIP (NOT SHOWN)
--	LED120S.23B	CLIP (NOT SHOWN)
24	LED120S.24	MOUNTING BRACKET
25	LED120S.25	LED CLIP
26	LED120S.26	LED PLATE
27	LED120S.27	LED BULB
28	MSC35.S	CSK PHILLIPS MACHINE SCREW M3x5 (SINGLE)

NOTE: It is our policy to continually improve products and as such we reserve the right to alter data, specifications and component parts without prior notice.

IMPORTANT: No liability is accepted for incorrect use of product.

WARRANTY: Guarantee is 12 months from purchase date, proof of which will be required for any claim.