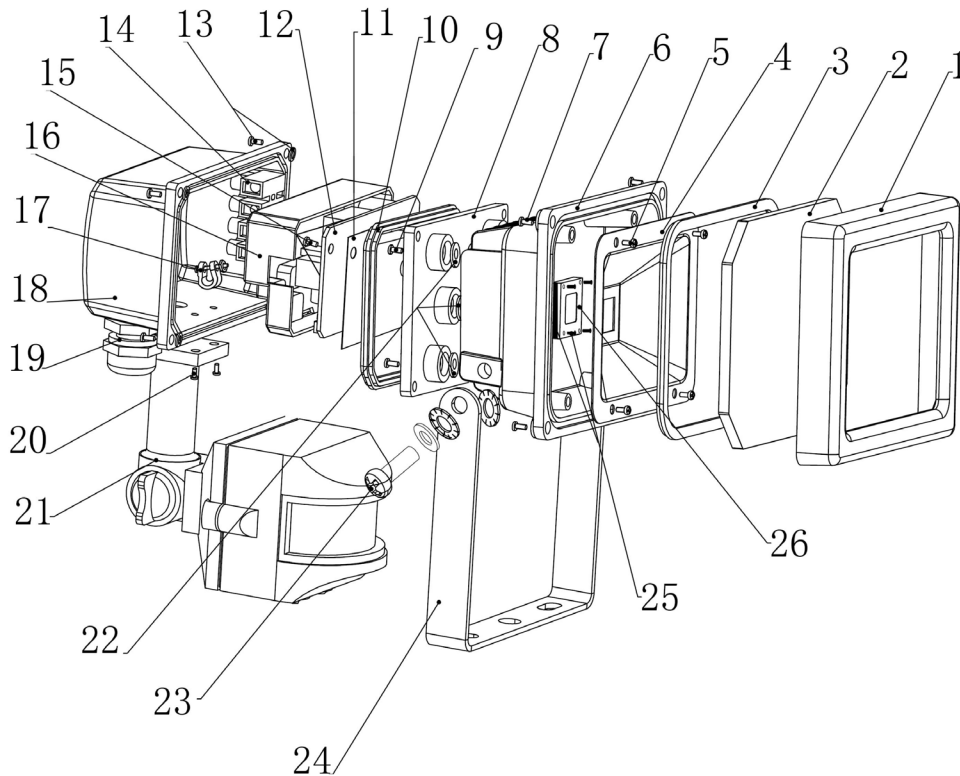


Parts Information:
Floodlight with Wall Bracket & PIR Sensor
10W COB LED 230V
Model No: LED110S



Item	Part No.	Description
1	LED110S.01	FRAME
2	LED110S.02	GLASS (110x82mm)
3	LED110S.03	BODY RING
4	LED110S.04	REFLECTOR
5	LED120S.04	SCREW
6	LED110S.06	LAMP BODY
7	MSP412.S	MACHINE SCREW PAN HEAD PHILLIPS M4x12mm
8	LED110S.08	CONNECTION BOX (BOTTOM)
9	MSP410.S	MACHINE SCREW PAN HEAD PHILLIPS M4x10mm
10	LED110S.10	CONNECTION BOX SEAL
11	LED110S.11	BACKING PAD
12	LED110S.12	STARTER POWER
13	MSP410.S	MACHINE SCREW PAN HEAD PHILLIPS M4x10mm
--	LED120S.17A	O-RING (NOT SHOWN)
15	LED120S.15	TERMINAL BLOCK
--	MSP36.S	MACHINE SCREW PAN HEAD PHILLIPS M3x6mm (NOT SHOWN)
--	LED110S.15A	EARTH WIRE (NOT SHOWN)
16	LED110S.16	STARTER COVER

Item	Part No.	Description
17	LED120S.22	CLIP
--	MSP410.S	MACHINE SCREW PAN HEAD PHILLIPS M4x10mm (NOT SHOWN)
--	LED120S.22A	PAN HEAD MACHINE SCREW M4X10 (NOT SHOWN)
--	MSP46.S	MACHINE SCREW PAN HEAD PHILLIPS M4x6mm (NOT SHOWN)
18	LED110S.18	BOX COVER
19	LED120S.18	CABLE GRIP
20	MSP38.S	MACHINE SCREW PAN HEAD PHILLIPS M3x8mm
21	LED110S.21	PIR SENSOR 120DEG
22	LED110S.22	CLIP
23	MSP614.S	MACHINE SCREW PAN HEAD PHILLIPS M6x14mm
--	LED120S.23A	CLIP (NOT SHOWN)
--	LED110S.23B	CLIP (NOT SHOWN)
24	LED110S.24	MOUNTING BRACKET
25	MSC35.S	CSK PHILLIPS MACHINE SCREW M3x5 (SINGLE)
--	LED110S.25A	LED CLIP (NOT SHOWN)
26	LED110S.26	LED BULB

NOTE: It is our policy to continually improve products and as such we reserve the right to alter data, specifications and component parts without prior notice.

IMPORTANT: No liability is accepted for incorrect use of product.

WARRANTY: Guarantee is 12 months from purchase date, proof of which will be required for any claim.