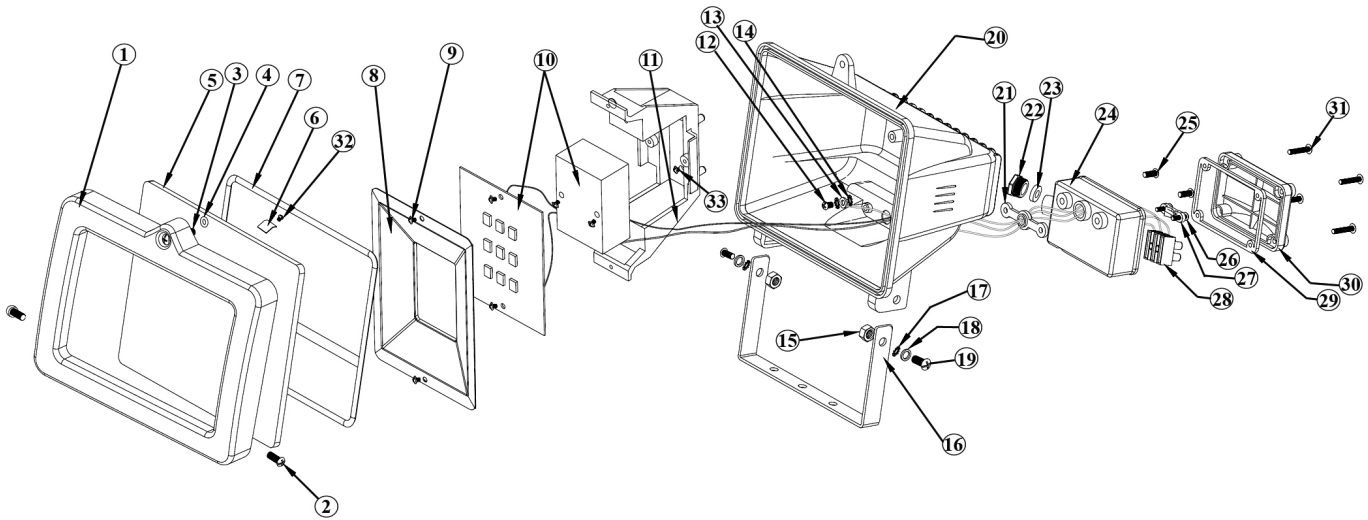




Parts Information:  
**Floodlight with Wall Bracket 9 SMD LED  
 230V**  
**Model No: LED044**



| Item | Part No.   | Description      |
|------|------------|------------------|
| 1    | LED044S.02 | FRAME            |
| 2    | LED044S.04 | SCREW            |
| 3    | LED044S.01 | SCREW            |
| 4    | LED044S.03 | O-RING           |
| 5    | LED044S.05 | GLASS (130x95mm) |
| 6    | LED044S.06 | GLASS CLIP       |
| 7    | LED044S.07 | SEAL GASKET      |
| 8    | LED044S.09 | SCREW            |
| 9    | LED044S.08 | REFLECTOR        |
| 10   | LED044S.10 | LIGHT ASSEMBLY   |
| 11   | LED044S.11 | FIXED BRACKET    |
| 12   | LED044S.12 | SCREW            |
| 13   | LED044.13  | EARTH WIRE       |
| 14   | LED044.14  | SCREW            |
| 15   | LED044S.15 | NUT              |
| 16   | LED044.16  | FIXED BRACKET    |
| 17   | LED044.17  | TOOTH WASHER     |

| Item | Part No.   | Description             |
|------|------------|-------------------------|
| 18   | LED044S.18 | WASHER                  |
| 19   | LED044S.19 | SCREW                   |
| 20   | LED044S.20 | LAMP BODY               |
| 21   | LED044S.21 | WIRE CLAMP              |
| 22   | LED044.22  | CABLE GRIP              |
| 23   | LED044.23  | RING                    |
| 24   | LED044.24  | CONNECTION BOX (BOTTOM) |
| 25   | LED044.25  | SCREW                   |
| 26   | LED044.26  | SCREW                   |
| 27   | LED046S.28 | CABLE GRIP              |
| 28   | LED044.28  | TERMINAL BLOCK          |
| 29   | LED044.29  | CONNECTION BOX SEAL     |
| 30   | LED044.30  | CONNECTION BOX COVER    |
| 31   | LED044S.26 | SCREW                   |
| 32   | LED044S.27 | SCREW                   |
| 33   | LED044S.28 | SCREW                   |

**NOTE:** It is our policy to continually improve products and as such we reserve the right to alter data, specifications and component parts without prior notice.

**IMPORTANT:** No liability is accepted for incorrect use of product.

**WARRANTY:** Guarantee is 12 months from purchase date, proof of which will be required for any claim.

**Sealey Group**, Kempson Way, Suffolk Business Park, Bury St Edmunds, Suffolk. IP32 7AR



01284 757500



01284 703534



sales@sealey.co.uk



www.sealey.co.uk