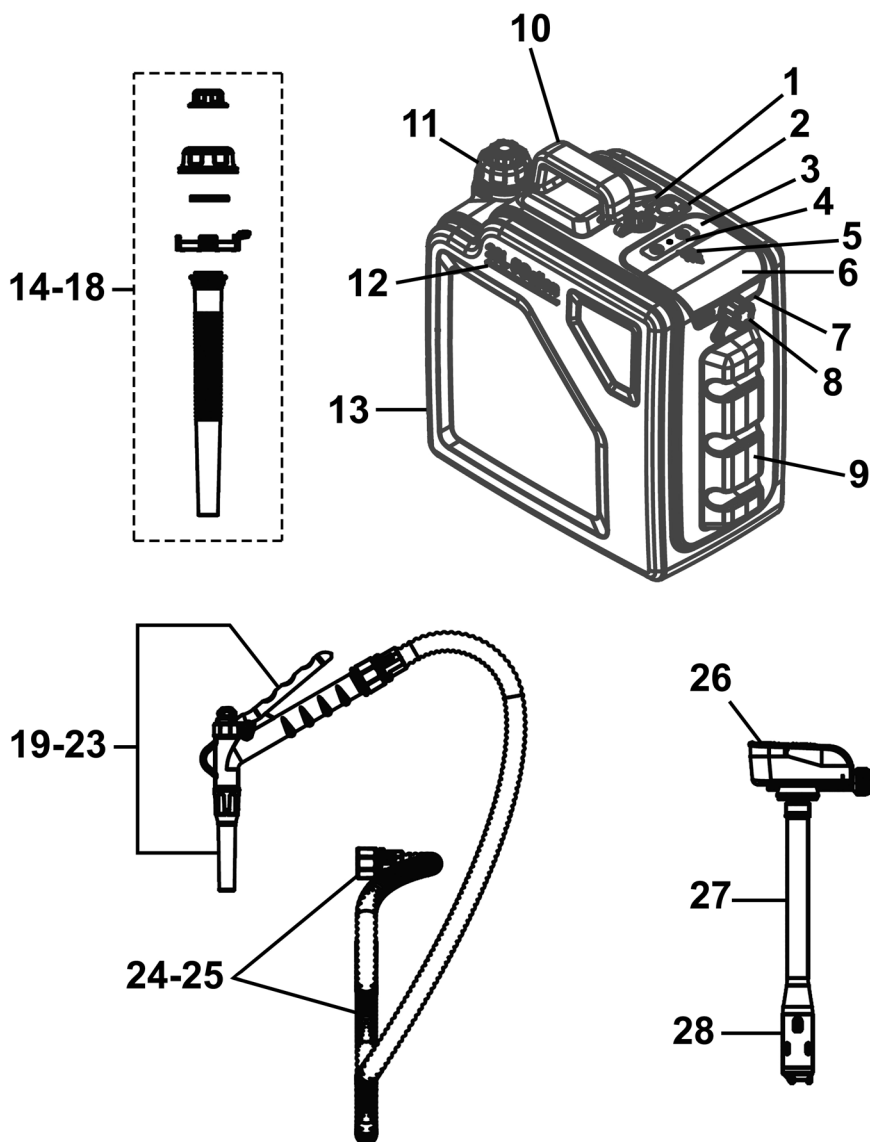




TM

Parts Information: Portable Fuelling Station 20L Multi Powered Model No: JC20FS



Item	Part No.	Description
1	JC20FS-01	Replacement Air Vent and Cap
2	JC20FS-02	Nozzle Seat
3	JC20FS-03	Power (ON) Button
4	JC20FS-04	Indicator Lamp
5	JC20FS-05	Power (OFF) Button
6	JC20FS-06	Battery Compartment and Cover
7	JC20FS-07	DC Inport
8	JC20FS-08	Replacement Outlet Cap
9	JC20FS-09	Discharge Hose Holder
10	JC20FS-10	Tank Handle
11	JC20FS-11	Fuelling Inlet Port

Item	Part No.	Description
12	JC20FS-12	Liquid Level Line
13	JC20FS-13	Fuel Tank
14-18	JC20FS-14-18	Replacement Manual Nozzle Set
19-23	JC20FS-19-23	Replacement Nozzle Assembly
24-25	JC20FS-24-25	Replacement Clear Flexible Hose
26	JC20FS-26	Controller
27	JC20FS-27	Intake Pipe
28	JC20FS-28	Pump and Motor
--	JC20FS-ACC1	DC Cable with Battery Clips (Not Shown)
--	JC20FS-ACC2	Car Cigarette Lighter Cord (Not Shown)

NOTE: It is our policy to continually improve products and as such we reserve the right to alter data, specifications and component parts without prior notice. There may be alternative versions of this product, please contact us should you require this information.

IMPORTANT: No liability is accepted for incorrect use of product. Spare parts must be fitted by a competent person

WARRANTY: Guarantee is 12 months from purchase date, proof of which will be required for any claim.

Jack Sealey Ltd t/a Sealey Group, Kempson Way, Suffolk Business Park, Bury St Edmunds, Suffolk, IP32 7AR UK

Jack Sealey (EU) Ltd t/a Sealey Group, Farney Street, Carrickmacross, Co. Monaghan, A81 PK68 Ireland

Tel: 01284 757500 • Email: sales@sealey.co.uk • Web: www.sealey.co.uk