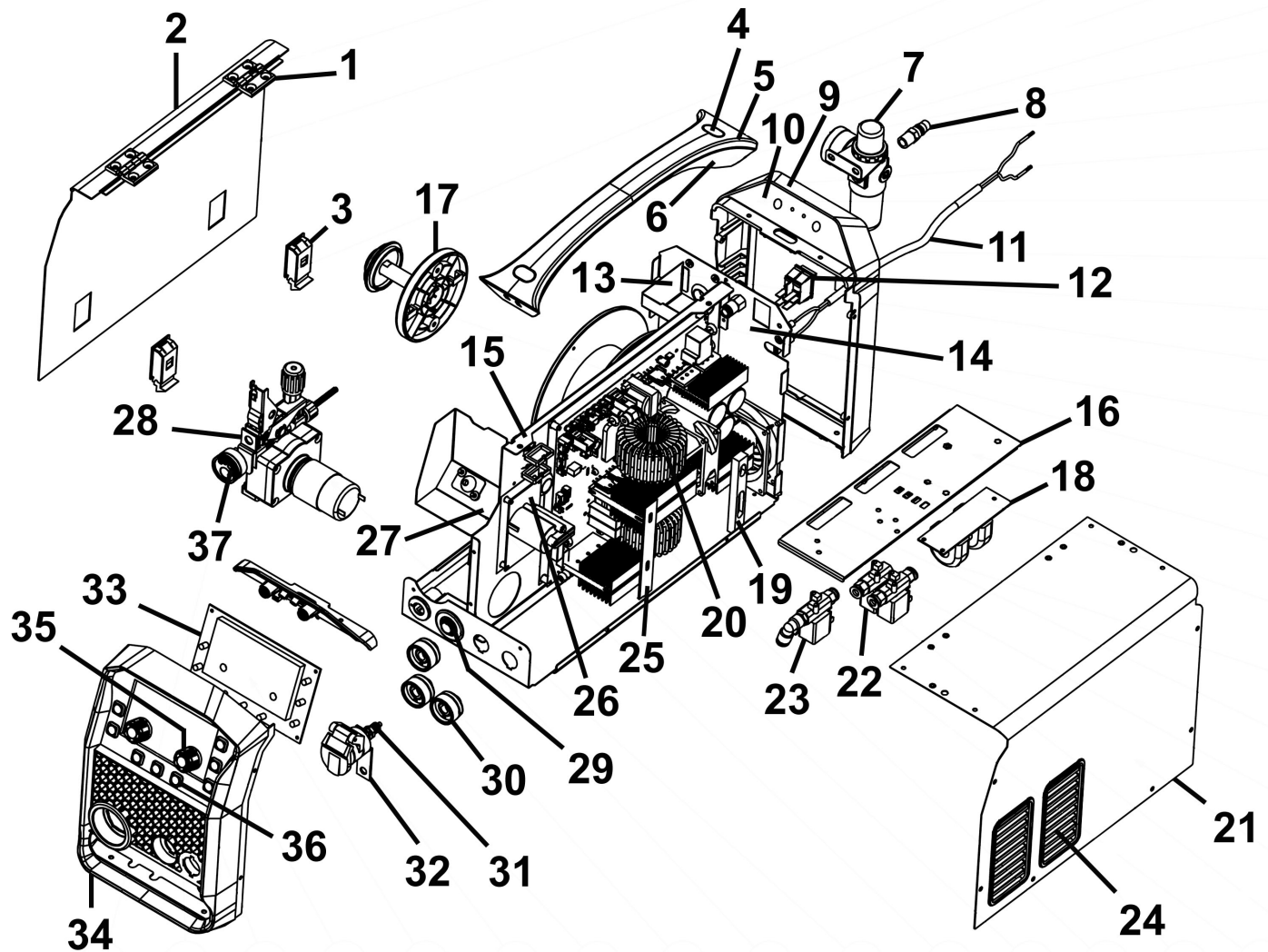


Parts Information:
**Mutli Process Inverter Welder 200A &
 Plasma Cutter 40A**
Model No: IMIG200P



Item	Part No.	Description	Qty
1	POWERMIG300I-21	Door Hinge	2
2	IMIG200P-02	Door Panel	1
3	POWERMIG300I-23	Door Latch	2
4	IMIG200P-04	Decorative Cover	2
5	IMIG200P-05	Handle Cover	1
6	IMIG200P-06	Handle Cover Base	1
7	PP25E-05	Regulator Assembly	1

Item	Part No.	Description	Qty
8	PP25E-04	Pneumatic Connector	1
9	IMIG200P-09	Rear Plastic Panel	1
10	IMIG200P-10	Rear Cover Plate	2
11	IMIG200P-11	Power Cable	1
12	IMIG200P-12	Rocker Switch	1
13	IMIG200P-13	Protective Cover	1
14	IMIG200P-14	Bottom Cover	1

NOTE: It is our policy to continually improve products and as such we reserve the right to alter data, specifications and component parts without prior notice. There may be alternative versions of this product, please contact us should you require this information.

IMPORTANT: No liability is accepted for incorrect use of product. Spare parts must be fitted by a competent person

WARRANTY: Guarantee is 12 months from purchase date, proof of which will be required for any claim.



Parts Information:
**Mutli Process Inverter Welder 200A &
Plasma Cutter 40A
Model No: IMIG200P**

Item	Part No.	Description	Qty
15	IMIG200P-15	Bracket	1
16	IMIG200P-16	EMC Bracket	1
17	IMIG200P-17	Wire Spool Holder	1
18	IMIG200P-18	EMC PCB	1
19	IMIG200P-19	Support Bar (A)	1
20	IMIG200P-20	Main PCB	1
21	IMIG200P-21	Top Cover	1
22	IMIG200P-22	Solenoid Valve (A)	2
23	IMIG200P-23	Solenoid Valve (B)	1
24	IMIG200P-24	Fan Grille	2
25	IMIG200P-25	Support Bar (B)	1
26	IMIG200P-26	PCB (High Frequency)	1
27	IMIG200P-27	PCB Protective Cover	1
28	IMIG200P-28	Wire Feed Motor	1

Item	Part No.	Description	Qty
29	IMIG200P-29	Quick Socket	1
30	IMIG200P-30	Quick Connector	3
31	PP25E-17	Torch Connector	1
32	IMIG200P-32	Angled Plate	1
33	IMIG200P-33	Control Panel PCB	1
34	IMIG200P-34	Front Panel, Plastic	1
35	IMIG200P-35	Potentiometer Knob	2
36	IMIG200P-36	Display Board Key	8
37	IMIG200P-37	Mig Torch Connector	1
--	IMIG200P-38	Earth Clamp 1.5m (Not Shown)	1
--	IMIG200P-39	Electrode Holder 2m (Not Shown)	1
--	IMIG200P-40	Mig Torch 3m (Not Shown)	1
--	IMIG200P-41	Cutting Torch 2.5m (Not Shown)	1

NOTE: It is our policy to continually improve products and as such we reserve the right to alter data, specifications and component parts without prior notice. There may be alternative versions of this product, please contact us should you require this information.

IMPORTANT: No liability is accepted for incorrect use of product. Spare parts must be fitted by a competent person

WARRANTY: Guarantee is 12 months from purchase date, proof of which will be required for any claim.

Sealey Group, Kempson Way, Suffolk Business Park, Bury St Edmunds, Suffolk. IP32 7AR



01284 757500



sales@sealey.co.uk



www.sealey.co.uk