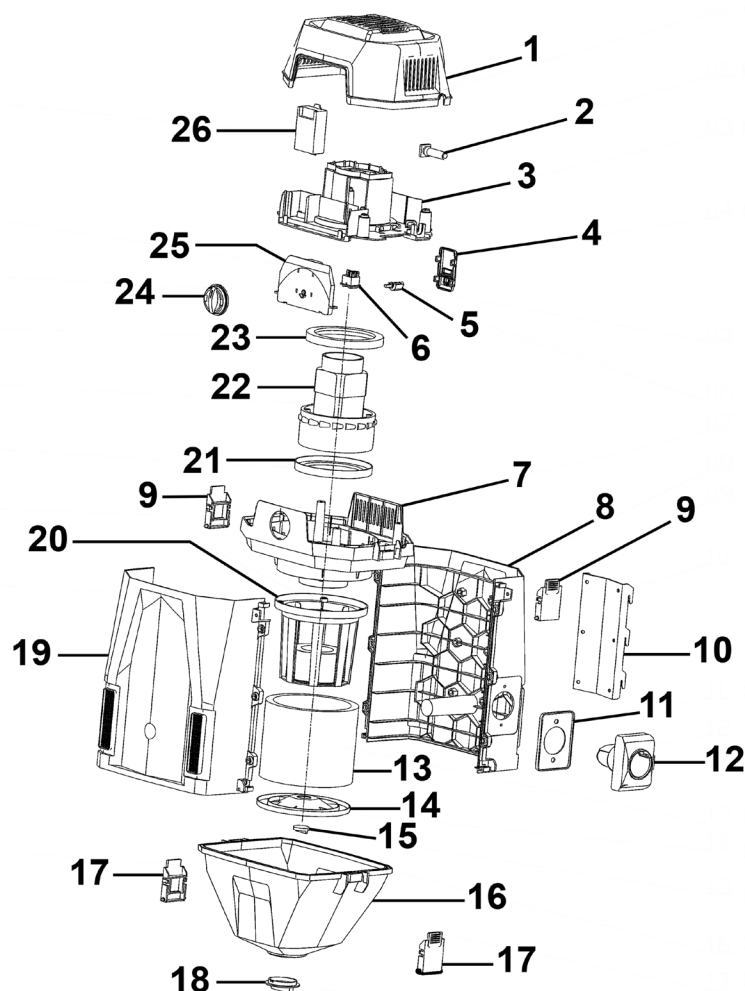


Parts Information: Wall Mounting Garage Vacuum with Remote Control 1200W/230V Model No: GV180WM.V2



| Item | Part No. | Description |
|------|---------------|----------------------------|
| 1 | GV180WM-V2-01 | Top Cover |
| 2 | GV180WM-V2-02 | Cable Sleeve |
| 3 | GV180WM-V2-03 | Motor Support, Upper Cover |
| 4 | GV180WM-V2-04 | Switch Backing Cover |
| 5 | GV180WM-V2-05 | Switch Shaft/Pin |
| 6 | GV180WM-V2-06 | Rocker Switch |
| 7 | GV180WM-V2-07 | Motor Support, Lower Cover |
| 8 | GV180WM-V2-08 | Rear Cover |
| 9 | GV180WM-V2-09 | Tank Clip (Upper) |
| 10 | GV180WM-V2-10 | Hanging Frame Holder |
| 11 | GV180WM-V2-11 | Air Inlet Seal |
| 12 | GV180WM-V2-12 | Air Inlet |
| 13 | GV180WMV2CF | Cartridge Filter |
| 14 | GV180WM-V2-14 | Filter Cover |
| 15 | GV180WM-V2-15 | Filter Buckle Clip |
| 16 | GV180WM-V2-16 | Dust Hopper |
| 17 | GV180WM-V2-17 | Dust Hopper Clip |

| Item | Part No. | Description |
|------|-----------------|---|
| 18 | GV180WM-V2-18 | Dust Cover |
| 19 | GV180WM-V2-19 | Front Cover |
| 20 | GV180WM-V2-20 | Filter Basket |
| 21 | GV180WM-V2-21 | Lower Motor Support Ring |
| 22 | GV180WM-V2-22 | Motor |
| 23 | GV180WM-V2-23 | Upper Motor Support Ring |
| 24 | GV180WM-V2-24 | Switch Knob |
| 25 | GV180WM-V2-25 | Switch Panel |
| 26 | GV180WM-V2-26 | Remote Control |
| -- | GV180WM-V2-ACC1 | Telescopic Extension Tubes (Not Shown) |
| -- | GV180WM-V2-ACC2 | Round Brush (Not Shown) |
| -- | GV180WM-V2-ACC3 | Combo Brush (Not Shown) |
| -- | GV180WM-V2-ACC4 | Deluxe Car Nozzle (Not Shown) |
| -- | GV180WM-V2-ACC5 | Crevice Tool (Not Shown) |
| -- | GV180WM-V2-ACC6 | Elbow Connector (Not Shown) |
| -- | GV180WM-V2-ACC7 | Flexible Hose 10m (Not Shown) |

NOTE: It is our policy to continually improve products and as such we reserve the right to alter data, specifications and component parts without prior notice. There may be alternative versions of this product, please contact us should you require this information.

IMPORTANT: No liability is accepted for incorrect use of product. Spare parts must be fitted by a competent person

WARRANTY: Guarantee is 12 months from purchase date, proof of which will be required for any claim.

Jack Sealey Ltd t/a Sealey Group, Kempson Way, Suffolk Business Park, Bury St Edmunds, Suffolk, IP32 7AR UK

Jack Sealey (EU) Ltd t/a Sealey Group, Farney Street, Carrickmacross, Co. Monaghan, A81 PK68 Ireland

Tel: 01284 757500 • Email: sales@sealey.co.uk • Web: www.sealey.co.uk