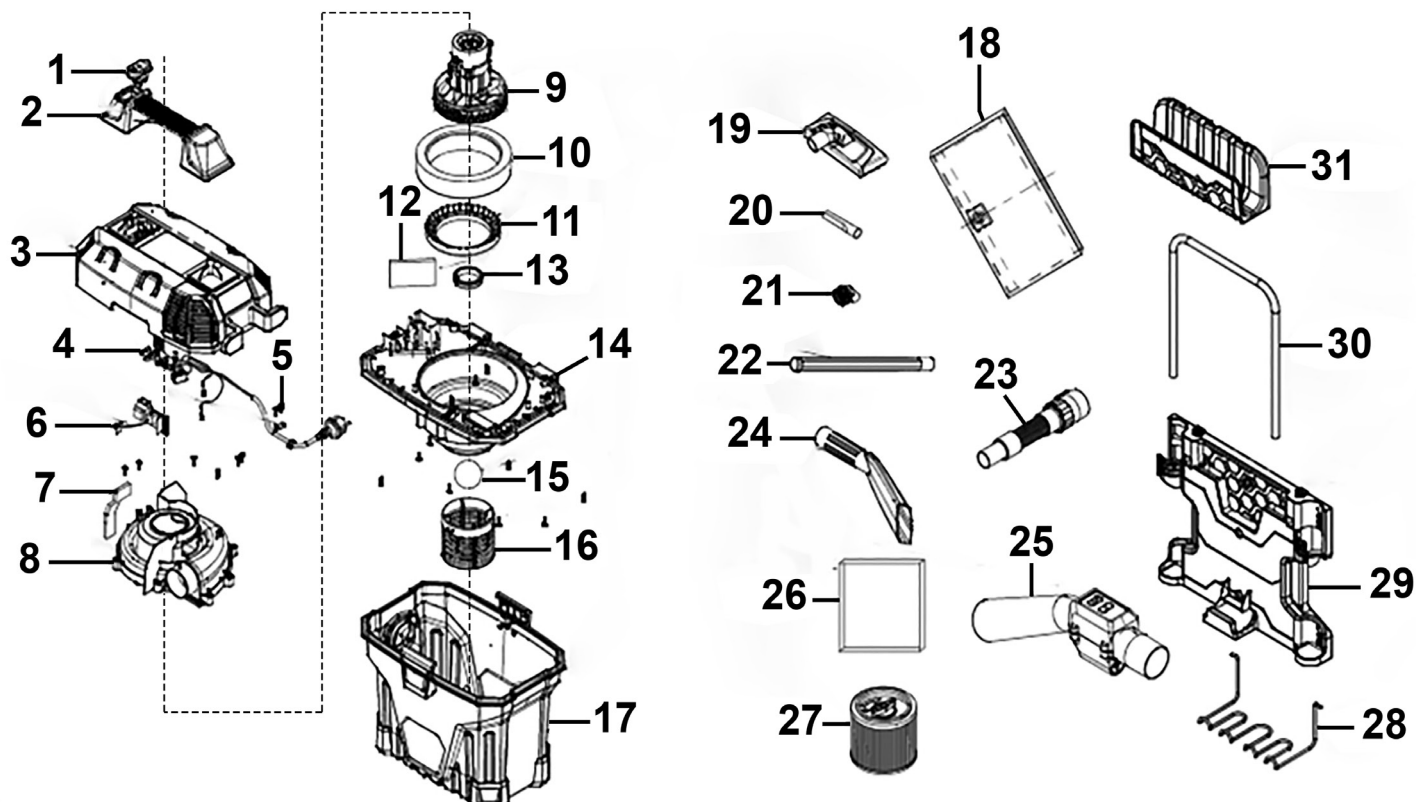


Parts Information: Wall Mounting Garage Vacuum with Remote Control 1500W/230V Model No: GV180WM



Item	Part No.	Description
1	GV180WM.01	Switch, On/Off Rocker (16A/250V - T85/55)
2	GV180WM.02	Handle
3	GV180WM.03	Upper Cover
4	GV180WM.04	Cable
5	GV180WM.05	Cable Grip
6	GV180WM.06	PCB, Remote Control Board, 60 X 52mm
7	GV180WM.07	Foam
8	GV180WM.08	Air Flow Cover
9	GV180WM.09	Motor (Internal 230v 1500w)
10	GV180WM.10	Foam
11	GV180WM.11	Rubber Seal Ring 111.4mm ID
12	GV180WM.12	Foam
13	GV180WM.13	Seal Ring 46mm ID
14	GV180WM.14	Lower Cover
15	GV180WM.15	Plastic Ball 54mm Dia
16	GV180WM.16	Cartridge Basket

Item	Part No.	Description
17	GV180WM.17	Tank
18	GV180WM.18	Dust Bag for GV180WM
19	GV180WM.19	Combo Brush
20	GV180WM.20	Crevice Tool
21	GV180WM.21	Round Brush
22	GV180WM.22	Extension Tube (Set of 2)
23	GV180WM.23	Hose
24	GV180WM.24	Car Crevice Tool
25	GV180WM.25	Remote Control
26	GV180WM.26	Foam Filter For GV180WM
27	GV180WM.27	Cartridge Filter For GV180WM
28	GV180WM.28	Hanging Frame
29	GV180WM.29	Hanging Frame Ass'y
30	GV180WM.30	Hanging Frame Support
31	GV180WM.31	Upper Hanging Frame
--	GV180WM.14A	Foam Seal Set (Not Shown)

NOTE: It is our policy to continually improve products and as such we reserve the right to alter data, specifications and component parts without prior notice. There may be alternative versions of this product, please contact us should you require this information.

IMPORTANT: No liability is accepted for incorrect use of product. Spare parts must be fitted by a competent person

WARRANTY: Guarantee is 12 months from purchase date, proof of which will be required for any claim.

Sealey Group, Kempson Way, Suffolk Business Park, Bury St Edmunds, Suffolk. IP32 7AR



01284 757500



sales@sealey.co.uk



www.sealey.co.uk