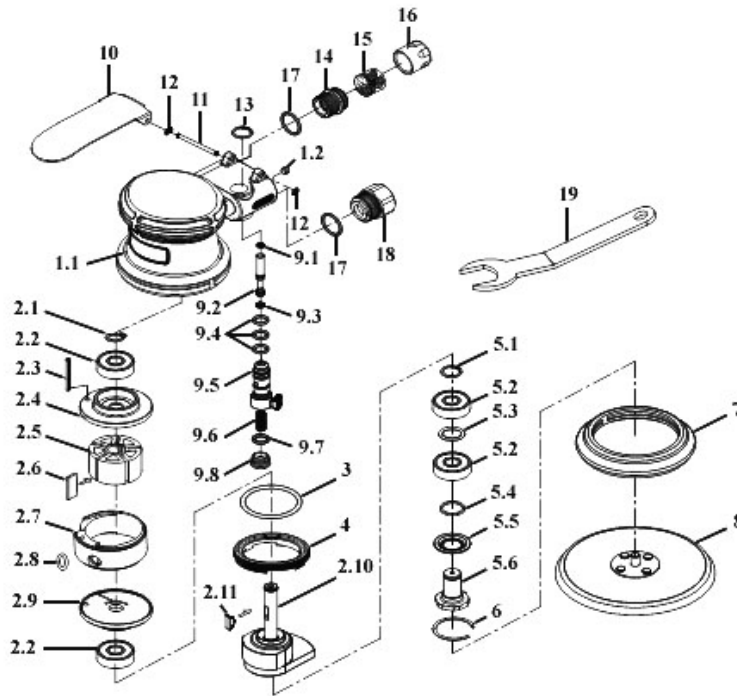




Parts Information:
Generation Series Air Palm Orbital Sander
Ø150mm
Model No: GSA08



| Item | Part No. | Description |
|------|-------------|-------------------------------------|
| 1.1 | GSA08.01 | HOUSING |
| 1.2 | GSA08.01-1 | HOUSING + GSA08.01-2 BUSHING (ASSY) |
| 2.1 | GSA08.02-1 | SNAP RING |
| 2.2 | B/6000ZZ | BEARING 6000ZZ |
| 2.3 | GSA08.02-3 | SPRING PIN |
| 2.4 | GSA08.02-4 | END PLATE |
| 2.5 | GSA08.02-5 | ROTOR |
| 2.6 | GSA08.02-6 | ROTOR BLADE |
| 2.7 | GSA08.02-7 | CYLINDER |
| 2.8 | GSA08.02-8 | O-RING |
| 2.9 | GSA08.02-9 | FRONT PLATE |
| 2.1 | GSA08.02-10 | CRANKSHAFT |
| 2.11 | GSA08.02-11 | KEY |
| 3 | GSA08.03 | O-RING |
| 4 | GSA08.04 | LOCK RING |
| 5.1 | GSA08.05-1 | SNAP RING |
| 5.2 | B/6001-2RS | BEARING 6001-2RS |
| 5.3 | GSA08.05-3 | SPACER |
| 5.4 | GSA08.05-4 | BEARING SEAL |
| 5.5 | GSA08.05-5 | BEARING SHIELD |
| 5.6 | GSA08.05-6 | BALANCER SHAFT |
| 6 | GSA08.06 | SNAP RING |
| 7 | GSA08.07 | PAD COVER |

| Item | Part No. | Description |
|------|-------------|-------------------------------|
| 8 | GSA08.08 | PAD |
| 9.1 | GSA08.09-1 | O-RING |
| 9.2 | GSA08.09-2 | VALVE STEM |
| 9.3 | GSA08.09-3 | O-RING |
| 9.4 | GSA08.09-4 | O-RING |
| 9.5 | GSA08.09-5 | REGULATOR |
| 9.6 | GSA08.09-6 | SPRING |
| 9.7 | GSA08.09-7 | O-RING |
| 9.8 | GSA08.09-8 | VALVE SCREW |
| 10 | GSA08.10 | LEVER |
| 11 | GSA08.11 | PIN |
| 12 | GSA08.12 | E-CLIP |
| 13 | GSA08.13 | SNAP RING |
| 14 | GSA08.14 | OUTLET BUSHING |
| 15 | GSA08.15 | MUFFLER INSERT |
| 16 | GSA08.16 | MUFFLER CAP |
| 17 | GSA08.17 | O-RING |
| 18 | GSA08.18 | AIR INLET |
| 19 | GSA08.19 | PAD WRENCH |
| -- | GSA08.02-4N | END PLATE (NEW) (NOT SHOWN) |
| -- | GSA08.02-5N | METAL ROTOR (NEW) (NOT SHOWN) |
| -- | GSA08.02-9N | FRONT PLATE (NEW) (NOT SHOWN) |

NOTE: It is our policy to continually improve products and as such we reserve the right to alter data, specifications and component parts without prior notice.

IMPORTANT: No liability is accepted for incorrect use of product.

WARRANTY: Guarantee is 12 months from purchase date, proof of which will be required for any claim.

Sealey Group, Kempson Way, Suffolk Business Park, Bury St Edmunds, Suffolk. IP32 7AR



01284 757500



01284 703534



sales@sealey.co.uk



www.sealey.co.uk