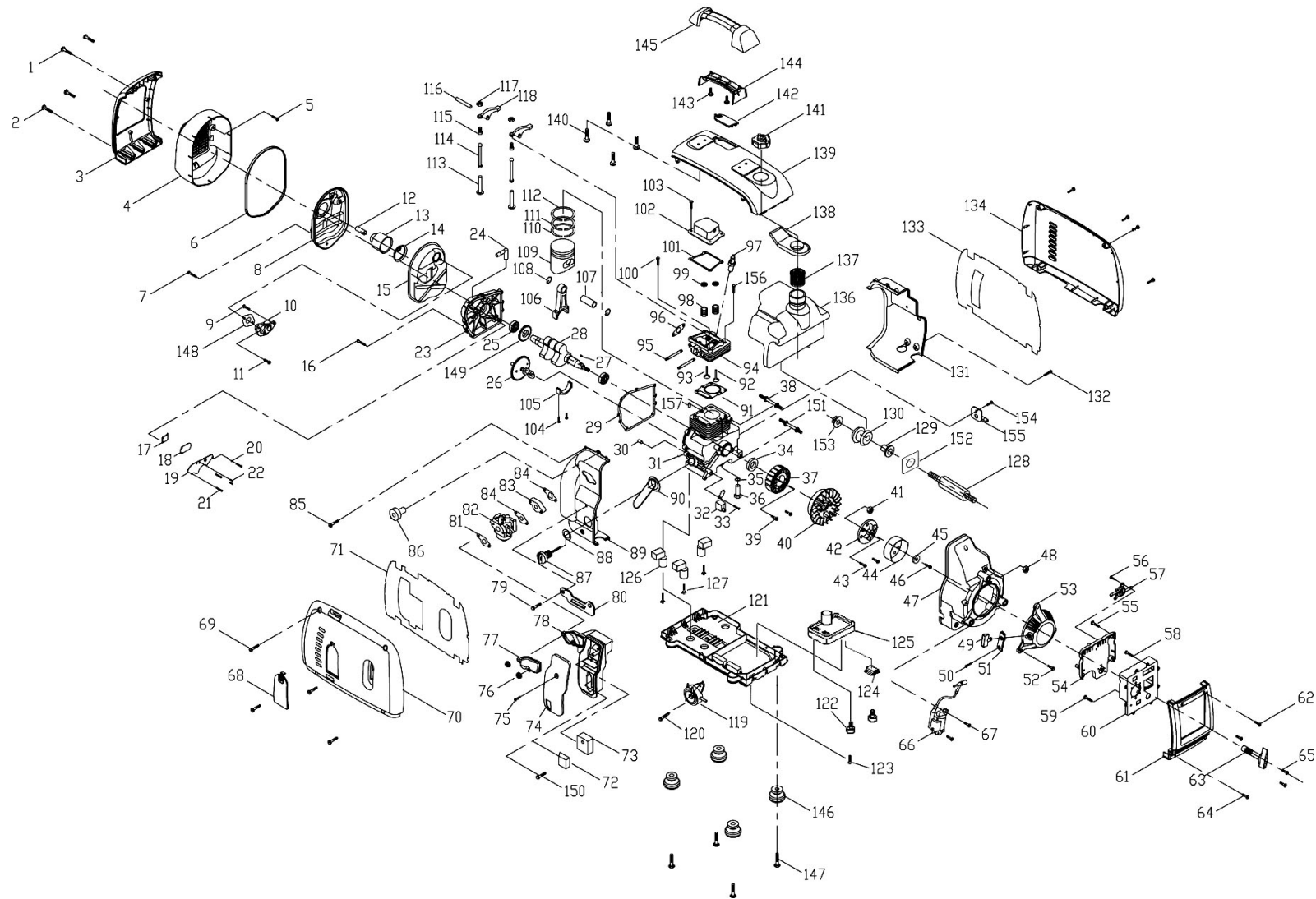




Parts Information:
Generator Inverter 1000W 230V
Model No: G1000E.V3



NOTE: It is our policy to continually improve products and as such we reserve the right to alter data, specifications and component parts without prior notice.

IMPORTANT: No liability is accepted for incorrect use of product.

WARRANTY: Guarantee is 12 months from purchase date, proof of which will be required for any claim.

Sealey Group, Kempson Way, Suffolk Business Park, Bury St Edmunds, Suffolk. IP32 7AR



01284 757500



01284 703534



sales@sealey.co.uk



www.sealey.co.uk



Parts Information:
Generator Inverter 1000W 230V
Model No: G1000E.V3

Item	Part No.	Description
1	G1000E.V3-01	CROSS HEAD SCREW (M5x20)
2	G1000E.V3-02	CROSS HEAD SCREW (M6x16)
3	G1000E.V3-03	BACK BOARD
4	G1000E.V3-04	MUFFLER HOOD
5	G1000E.V3-05	CROSS HEAD SCREW (M5x8)
6	G1000E.V3-06	RUBBER SEAL
7	G1000E.V3-07	FLANGE SCREW (M5x20)
8	G1000E.V3-08	MUFFLER BACK COVER
9	G1000E.V3-09	FLANGE SCREW (M5x20)
10	G1000E.V3-10	EXHAUST
11	G1000E.V3-11	FLANGE SCREW (M6x40)
12	G1000E.V3-12	MUFFLER EXHAUST
13	G1000E.V3-13	BOBBIN FOR MUFFLER
14	G1000E.V3-14	COVER FOR BOBBIN
15	G1000E.V3-15	MUFFLER FRONT COVER
16	G1000E.V3-16	FLANGE SCREW (M5x25-8.8)
17	G1000E.V3-17	VALVE PAD BASE
18	G1000E.V3-18	VALVE PAD
19	G1000E.V3-19	VALVE PAD COVER
20	G1000E.V3-20	WASHER
21	G1000E.V3-21	CROSS HEAD SCREW (M4x10)
22	G1000E.V3-22	RIVET (3x4)
23	G1000E.V3-23	COVER
24	G1000E.V3-24	ELBOW
25	G1000E.V3-25	BEARING
26	G1000E.V3-26	CAMSHAFT
27	G1000E.V3-27	WOODRUFF KEY
28	G1000E.V3-28	CRANKSHAFT
29	G1000E.V3-29	SEAL GASKET
30	G1000E.V3-30	DOWEL PIN
31	G1000E.V3-31	CRANKCASE
32	G1000E.V3-32	TRIGGER COIL
33	G1000E.V3-33	SCREW (M5x12)
34	G1000E.V3-34	OIL SEAL
35	G1000E.V3-35	O-RING
36	G1000E.V3-36	OIL SENSOR
37	G1000E.V3-37	STATOR
38	G1000E.V3-38	SCREW (5.5 x 46)
39	G1000E.V3-39	FLANGE SCREW (M5x25)
40	G1000E.V3-40	FLYWHEEL

Item	Part No.	Description
41	SN10.S	STEEL NUT M10 ZINC DIN934(SINGLE)
42	G1000E.V3-42	STARTING BASE
43	G1000E.V3-43	FLANGE SCREW (M6x14)
44	G1000E.V3-44	STARTING FLANGE
45	G1000E.V3-45	GASKET
46	G1000E.V3-46	FLANGE SCREW (M6x18)
47	G1000E.V3-47	AIR GUIDE COVER
48	FN5.S	FLANGE NUT SERRATED M5 ZINC (SINGLE)
49	G1000E.V3-49	STARTING KNOB
50	G1000E.V3-50	CROSS HEAD SCREW (M5x12)
51	G1000E.V3-51	RECOIL STARTING BOARD
52	G1000E.V3-52	CROSS HEAD SCREW
53	G1000E.V3-53	STARTING COVER ASS'Y
54	G1000E.V3-54	BACK COVER FOR SOCKET BOARD
55	G1000E.V3-55	CROSS HEAD SCREW (ST4.2 x 15)
56	G1000E.V3-56	CROSS HEAD SCREW (ST6.5 x 13)
57	G1000E.V3-57	OIL SWITCH
58	G1000E.V3-58	FLANGE SCREW (M6x10)
59	G1000E.V3-59	CROSS HEAD SCREW (ST4.2 x 15)
60	G1000E.V3-60	SOCKET BOARD
--	G1000E.V3-60A	INDICATOR LIGHT (NOT SHOWN)
61	G1000E.V3-61	FRONT BOARD
62	G1000E.V3-62	CROSS HEAD SCREW (M4x20)
63	G1000E.V3-63	OIL SWITCH BUTTON
64	G1000E.V3-64	CROSS HEAD SCREW (M6x16)
65	G1000E.V3-65	CROSS HEAD SCREW (M4x18)
66	G1000E.V3-66	IGNITOR
67	G1000E.V3-67	SCREW (ST5.5 x 19)
68	G1000E.V3-68	RIGHT SIDE BOARD
69	G1000E.V3-69	CROSS HEAD SCREW (M6x16)
70	G1000E.V3-70	LEFT BOARD
71	G1000E.V3-71	BAFFLE (LEFT SIDE)
72	G1000E.V3-72	FOAM FILTER
73	G1000E.V3-73	FILTER BLOCK
74	G1000E.V3-74	FILTER COVER
75	G1000E.V3-75	SCREW (ST4.8 x 12)
76	SN5.S	STEEL NUT M5 ZINC DIN934 (SINGLE)
77	G1000E.V3-77	FILTER BODY COVER
78	G1000E.V3-78	FILTER BODY
79	G1000E.V3-79	FLANGE SCREW (M6x20)

NOTE: It is our policy to continually improve products and as such we reserve the right to alter data, specifications and component parts without prior notice.

IMPORTANT: No liability is accepted for incorrect use of product.

WARRANTY: Guarantee is 12 months from purchase date, proof of which will be required for any claim.

Sealey Group, Kempson Way, Suffolk Business Park, Bury St Edmunds, Suffolk. IP32 7AR



01284 757500



01284 703534



sales@sealey.co.uk



www.sealey.co.uk



Parts Information:
Generator Inverter 1000W 230V
Model No: G1000E.V3

Item	Part No.	Description
80	G1000E.V3-80	SUPPORT FOR AIR FILTER
81	G1000E.V3-81	CARBURETTOR SEAL GASKET
82	G1000E.V3-82	CARBURETTOR
83	G1000E.V3-83	CARBURETTOR BLOCK
84	G1000E.V3-84	CARBURETTOR SEAL GASKET
85	G1000E.V3-85	SCREW (ST4.2 x 12)
86	G1000E.V3-86	LEVEL RING
87	G1000E.V3-87	OIL LEVEL INDICATOR
88	G1000E.V3-88	OIL RING
89	G1000E.V3-89	RIGHT COVER
90	G1000E.V3-90	RUBBER GASKET
91	G1000E.V3-91	CYLINDER WASHER
92	G1000E.V3-92	INPUT VALVE
93	G1000E.V3-93	OUTPUT VALVE
94	G1000E.V3-94	CYLINDER HEAD
95	G1000E.V3-95	SCREW
96	G1000E.V3-96	OUTPUT VALVE SEAL GASKET
97	G1000E.V3-97	SPARK PLUG
98	G1000E.V3-98	VALVE SPRING
99	G1000E.V3-99	VALVE SPRING RING
100	G1000E.V3-100	FLANGE SCREW
101	G1000E.V3-101	SEAL GASKET FOR CYLINDER COVER
102	G1000E.V3-102	CYLINDER COVER
103	G1000E.V3-103	SCREW (M5x10)
104	G1000E.V3-104	FLANGE SCREW
105	G1000E.V3-105	CONNECTING ROD COVER
106	G1000E.V3-106	CONNECTING ROD
107	G1000E.V3-107	PISTON PIN
108	G1000E.V3-108	PISTON PIN SPRING
109	G1000E.V3-109	PISTON
110	G1000E.V3-110	OIL RING
111	G1000E.V3-111	PISTON RING
112	G1000E.V3-112	PISTON RING
113	G1000E.V3-113	CYLINDER VALVE SUPPORT
114	G1000E.V3-114	VALVE ROCKER ARM
115	G1000E.V3-115	ADJUSTER SCREW
116	G1000E.V3-116	ROCKER ARM PIN
117	G1000E.V3-117	NUT
118	G1000E.V3-118	VALVE ROCKER
119	G1000E.V3-119	FUEL PUMP

Item	Part No.	Description
120	G1000E.V3-120	FLANGE SCREW (M6x12)
121	G1000E.V3-121	BASE
122	G1000E.V3-122	BASE SUPPORT MOUNT
123	G1000E.V3-123	FLANGE SCRW (M6x12)
124	G1000E.V3-124	VIBRATION REDUCER STRIP
125	G1000E.V3-125	BASE SUPPORT
126	G1000E.V3-126	VIBRATION REDUCER
127	G1000E.V3-127	FLANGE SCREW (M6x12)
128	G1000E.V3-128	OIL TANK FIXED SCREW
129	G1000E.V3-129	VIBRATION REDUCER PIPE
130	G1000E.V3-130	VIBRATION REDUCER WASHER
131	G1000E.V3-131	LEFT COVER
132	G1000E.V3-132	FLANGE SCREW (M5x10)
133	G1000E.V3-133	BAFFLE (RIGHT SIDE)
134	G1000E.V3-134	RIGHT COVER
136	G1000E.V3-136	OIL TANK
137	G1000E.V3-137	FILTER CUP
138	G1000E.V3-138	VIBRATION REDUCER RING
139	G1000E.V3-139	TOP COVER
140	G1000E.V3-140	SCREW (5.5x13)
141	G1000E.V3-141	TANK COVER
142	G1000E.V3-142	INSERT FOR TOP COVER
143	G1000E.V3-143	SCREW (4.2x9.5)
144	G1000E.V3-144	HANDLE (LOWER)
145	G1000E.V3-145	HANDLE (UPPER)
146	G1000E.V3-146	RUBBER FOOT
147	G1000E.V3-147	CROSS HEAD SCREW (M6x10)
148	G1000E.V3-148	OUTPUT PIPE SEAL GASKET
149	G1000E.V3-149	CRANKSHAFT TIMING GEAR
150	G1000E.V3-150	CROSS HEAD SCREW (M6x20)
151	G1000E.V3-151	SCREW (5.5 x 45)
152	G1000E.V3-152	SQUARE WASHER
153	G1000E.V3-153	SPACER
154	G1000E.V3-154	SCREW
155	G1000E.V3-155	INTAKE VALVE
156	G1000E.V3-156	SCREW
157	G1000E.V3-157	STUD
--	G1000E.V3-DC	DC EQUIPMENT (NOT SHOWN)
--	G1000E.V3-GS	GASKET SET (NOT SHOWN)

NOTE: It is our policy to continually improve products and as such we reserve the right to alter data, specifications and component parts without prior notice.

IMPORTANT: No liability is accepted for incorrect use of product.

WARRANTY: Guarantee is 12 months from purchase date, proof of which will be required for any claim.

Sealey Group, Kempson Way, Suffolk Business Park, Bury St Edmunds, Suffolk. IP32 7AR



01284 757500



01284 703534



sales@sealey.co.uk



www.sealey.co.uk