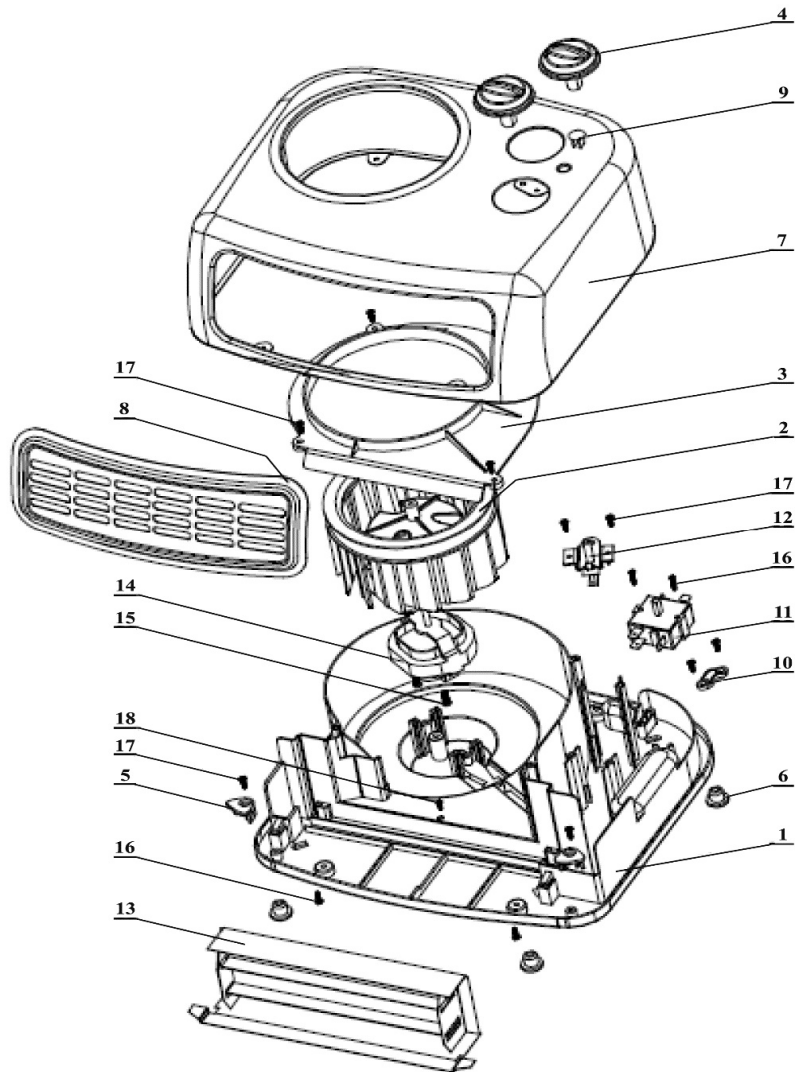


Parts Information:
**Fan Heater 2000W/230V 2 Heat Settings &
 Thermostat**
Model No: FH2009.V2



Item	Part No.	Description
1	FH2009.V2-01	BASE PLATE
2	FH2009.V2-02	FAN
3	FH2009.V2-03	FAN COVER
4	FH2009.V2-04	SWITCH KNOB
5	FH2009.V2-05	LOCK
6	FH2009.V2-06	PLASTIC FOOT
7	FH2009.V2-07	TOP COVER
8	FH2009.V2-08	FRONT GRILLE
9	FH2009.V2-09	LAMP
10	FH2009.V2-10	CORD CLAMP
11	FH2009.V2-11	POWER SWITCH
12	FH2009.V2-12	ADJUSTABLE THERMOSTAT
13	FH2009.V2-13	HEATING ELEMENT
14	FH2009.V2-14	MOTOR

Item	Part No.	Description
15	FH2009.V2-15	RD HEAD S/T SCREW M2.8 X 12
16	SN4.S	STEEL NUT M4 ZINC DIN934 (SINGLE)
17	MSP48.S	MACHINE SCREW PAN HEAD PHILLIPS M4x8mm (
18	SN4.S	STEEL NUT M4 ZINC DIN934 (SINGLE)
--	SWM4.S	SPRING WASHER M4 (SINGLE) (NOT SHOWN)
--	TS10SEW.121	M4 EXT TOOTH WASHER ZINC (NOT SHOWN)
--	FH2009.V2-21	RD HEAD S/T SCREW M2.5 X 25 (NOT SHOWN)
--	FH2009.V2-22	RD HEAD S/T SCREW M3.8 X 10 (NOT SHOWN)
--	FH2009.V2-23	RD HEAD S/T SCREW M2.8 X 12 (NOT SHOWN)
--	FH2009.V2-24	RD HEAD S/T SCREW M3.8 X 8 (NOT SHOWN)
--	MC3CX0.75	MAINS CABLE BLK, 3 CORE, 0.75 MM2 (NOT SHOWN)

NOTE: It is our policy to continually improve products and as such we reserve the right to alter data, specifications and component parts without prior notice.

IMPORTANT: No liability is accepted for incorrect use of product.

WARRANTY: Guarantee is 12 months from purchase date, proof of which will be required for any claim.