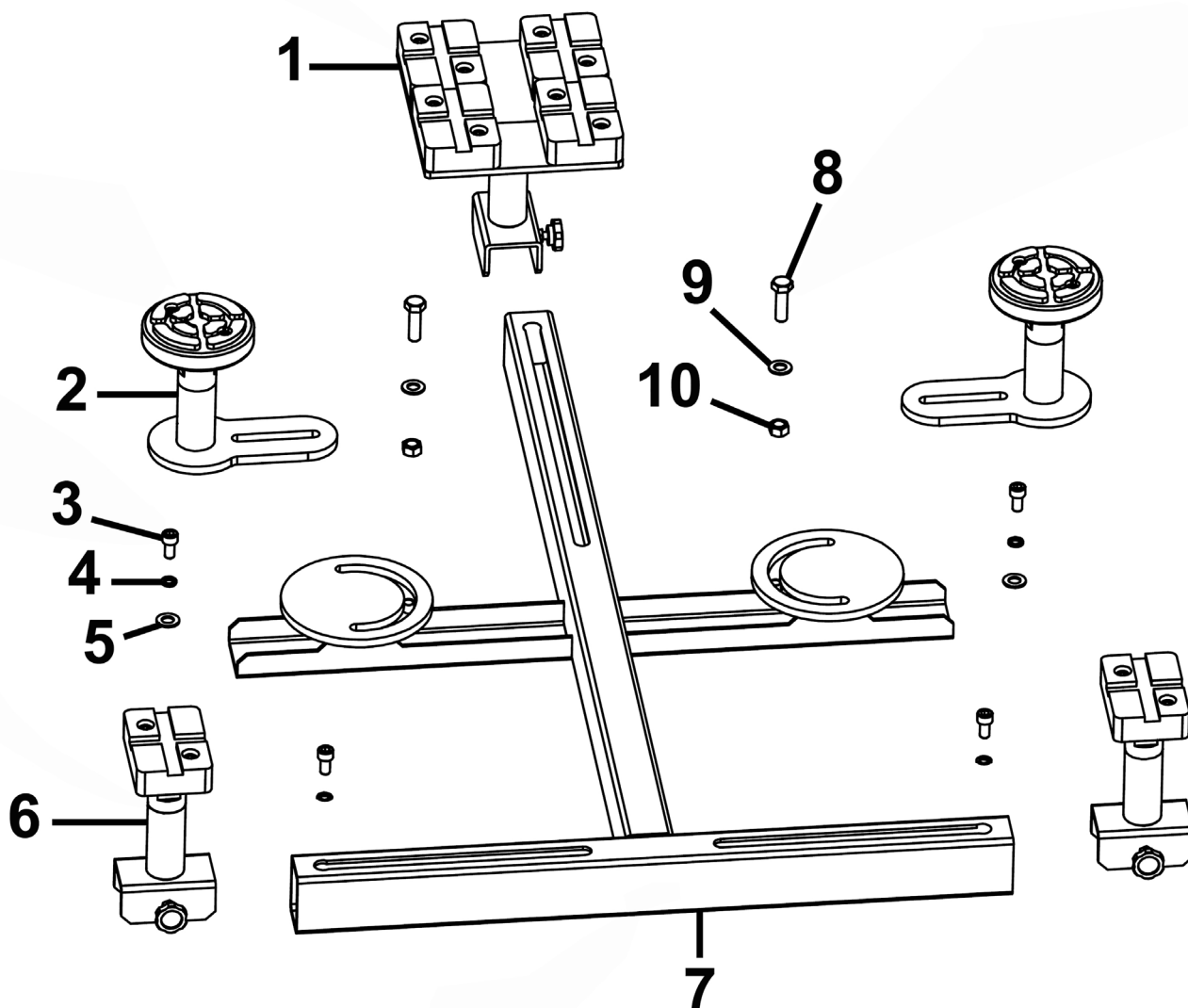


Parts Information: Lifting Platform Engines/Transmissions Adaptor Model No: EVBT05



Item	Part No.	Description	Qty
1	EVBT05-01	Saddle Pad Assembly (Square - Large)	1
2	EVBT05-02	Saddle Pad Assembly (Round)	2
3	SCB1020.S	Socket Cap Bolt M10 x 20mm	4
4	SWM10.S	Spring Washer M10 Zinc	4
5	FWM10.S	Flat Washer M10 Zinc	4

Item	Part No.	Description	Qty
6	EVBT05-06	Saddle Pad Assembly (Square - Small)	2
7	EVBT05-07	Support Rail Assembly	1
8	SS1240.S	Hex Head Set Screw M12 X 40 Zinc	2
9	FWM12.S	Flat Washer M12 Zinc	2
10	SN12.S	Steel Nut M12 Zinc	2

NOTE: It is our policy to continually improve products and as such we reserve the right to alter data, specifications and component parts without prior notice. There may be alternative versions of this product, please contact us should you require this information.

IMPORTANT: No liability is accepted for incorrect use of product. Spare parts must be fitted by a competent person

WARRANTY: Guarantee is 12 months from purchase date, proof of which will be required for any claim.

Jack Sealey Ltd t/a Sealey Group, Kempson Way, Suffolk Business Park, Bury St Edmunds, Suffolk, IP32 7AR UK

Jack Sealey (EU) Ltd t/a Sealey Group, Farney Street, Carrickmacross, Co. Monaghan, A81 PK68 Ireland

Tel: 01284 757500 • Email: sales@sealey.co.uk • Web: www.sealey.co.uk