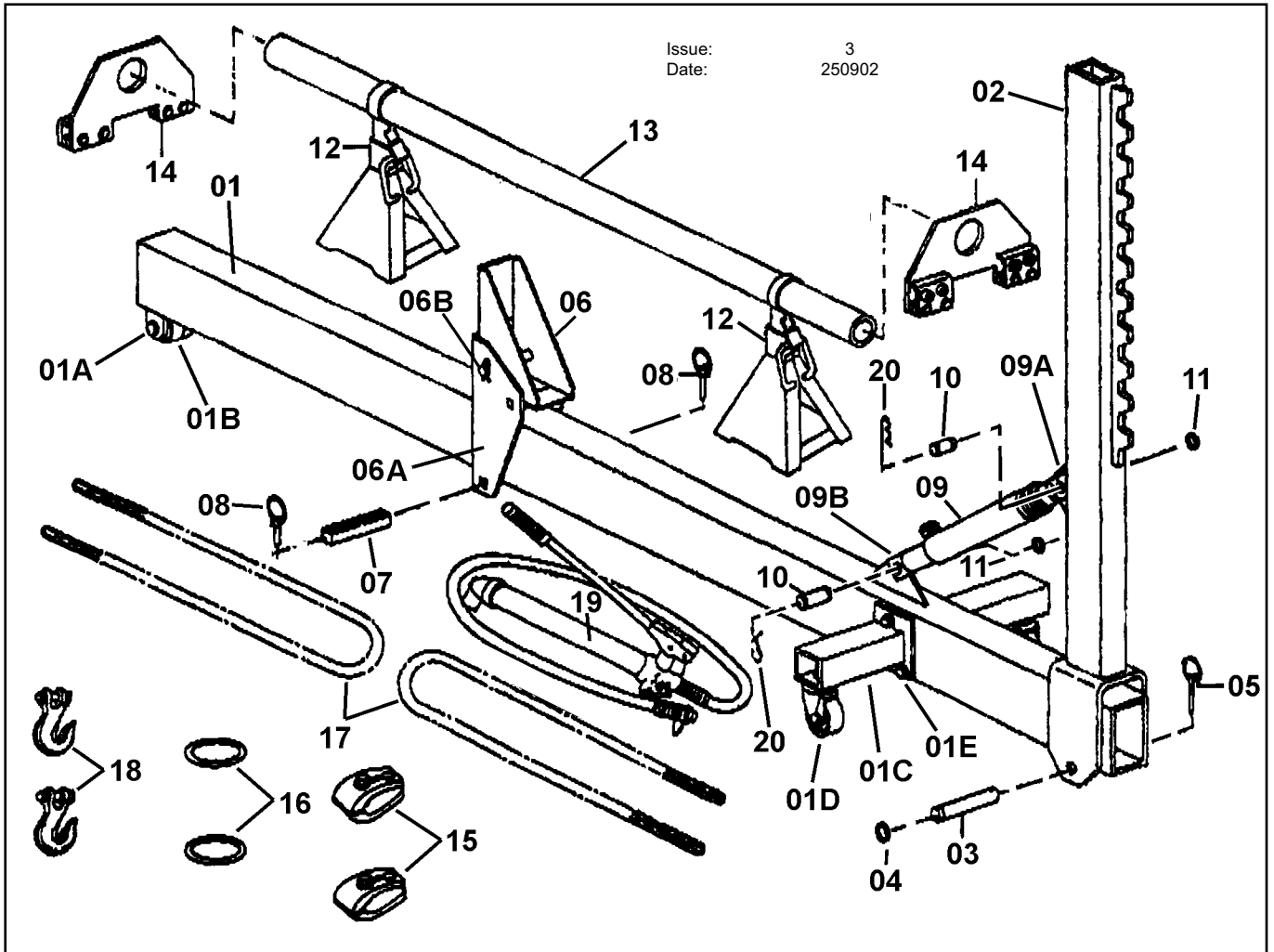


**SUPERPULL® 10 TON HYDRAULIC CHASSIS STRAIGHTENER** Model: **DZRE84/C**

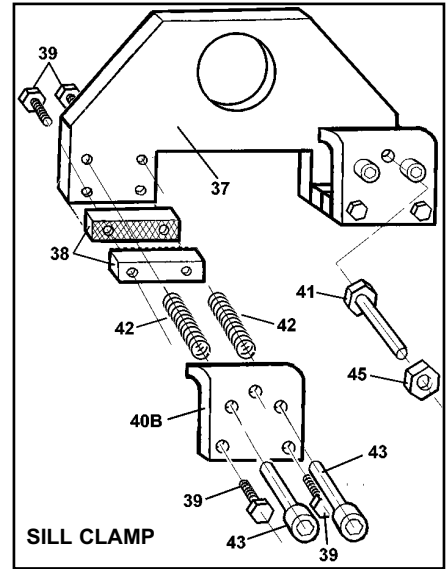
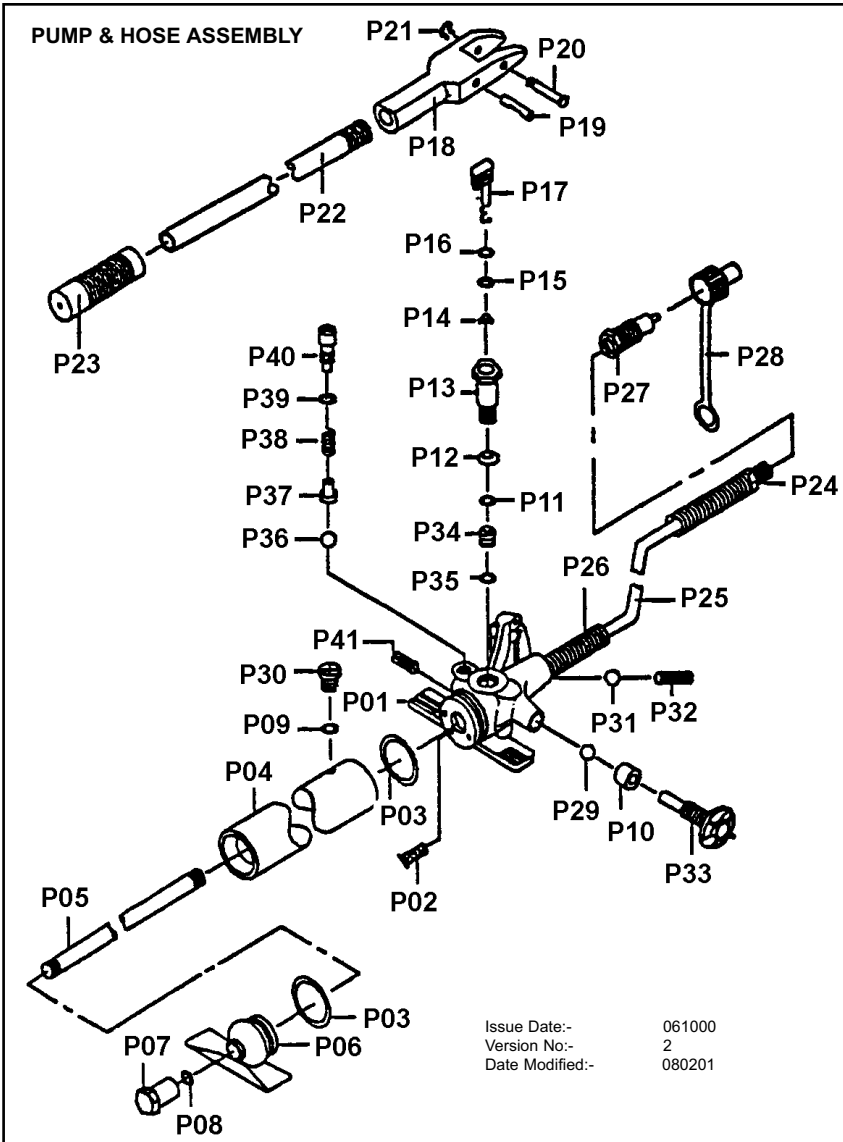
Issue: 3  
Date: 250902



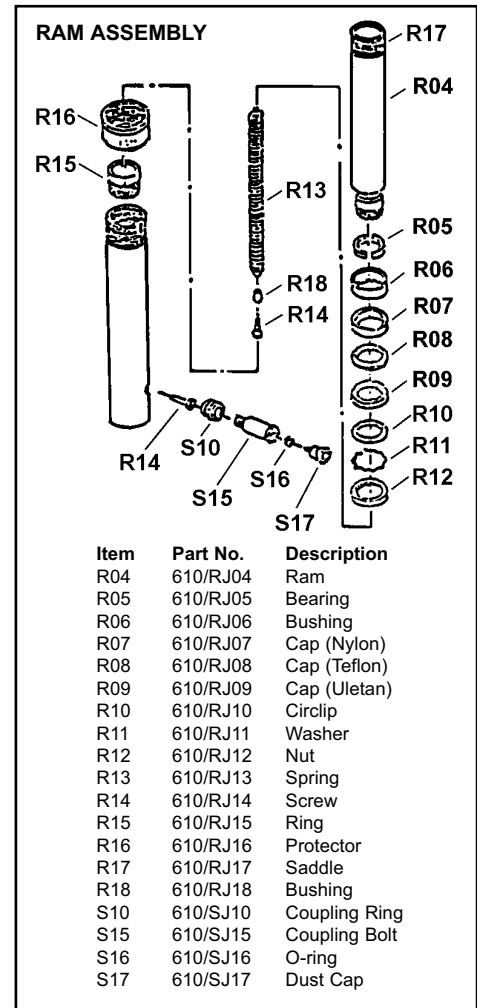
Item	Part Number	Description
01	DZRE84/C/01	Main Beam
01A	DZRE84/C/01-A	Nut & bolt
01B	DZRE84/C/01-B	Fixed Wheel
01C	DZRE84/C/01-C	Arm
01D	DZRE84/C/01-D	Castor wheel assembly
01E	DZRE84/C/01-E	Nut & bolt
02	DZRE84/C/02	Post
03	DZRE84/C/03	Spindle
04	DZRE84/C/04	Snap Ring "C"
05	DZRE84/C/05	Pin
06	DZRE84/C/06	Anchor post, top
06A	DZRE84/C/06-A	Anchor post, bottom
06B	DZRE84/C/06-B	Anchor post, spindle
07	DZRE84/C/07	Stop block
08	DZRE84/C/08	Pin

Item	Part Number	Description
09	610/41	10ton ram
09A	DZRE84/C/09A	Ram attachment
09B	DZRE84/C/09B	Ram attachment (female)
10	DZRE84/C/10	Spindle
11	DZRE84/C/11	Snap Ring "C"
12	DZRE84/C/12	Support stand (pair)
13	DZRE84/C/13	Cross Tube
14	DZRE84/C/14	Sill Clamp complete
15	DZRE84/C/15	Pull Clamp
16	DZRE84/C/16	Ring for pull clamp
17	DZRE84/C/17	Chain 2m x 3/8"
18	DZRE84/C/18	Hook
19	610/40	10ton Pump
20	DZRE84/C/20	Cotter pin

PARTS LIST FOR : **10 TON PUMP, RAM & SILL CLAMP ASSEMBLIES FOR MODELS DZRE84/C & DZRE92/C**



Item	Part No.	Description
37	DZRE84/C/14-37	Support Plate
38	DZRE84/C/14-38	Jaw Face
39	DZRE84/C/14-39	Hex Head Screw
40B	DZRE84/C/14-40B	Clamp Bracket
41	DZRE84/C/14-41	Bolt
42	DZRE84/C/14-42	Spring
43	DZRE84/C/14-43	Screw
45	DZRE84/C/14-45	Nut



Item	Part No.	Description
R04	610/RJ04	Ram
R05	610/RJ05	Bearing
R06	610/RJ06	Bushing
R07	610/RJ07	Cap (Nylon)
R08	610/RJ08	Cap (Teflon)
R09	610/RJ09	Cap (Uletan)
R10	610/RJ10	Circlip
R11	610/RJ11	Washer
R12	610/RJ12	Nut
R13	610/RJ13	Spring
R14	610/RJ14	Screw
R15	610/RJ15	Ring
R16	610/RJ16	Protector
R17	610/RJ17	Saddle
R18	610/RJ18	Bushing
S10	610/SJ10	Coupling Ring
S15	610/SJ15	Coupling Bolt
S16	610/SJ16	O-ring
S17	610/SJ17	Dust Cap

Item	Part No.	Description	Item	Part No.	Description
P01	610/PJ01	Pump Housing	P22	610/PJ22	Pump Handle Assembly
P02	610/PJ02	Filter	P23	610/PJ23	Grip
P03	610/PJ03	Seal	P24	610/PJ24	Hydraulic Fitting
P04	610/PJ04	Pump Reservoir	P25	610/PJ25	Hose
P05	610/PJ05	Screw	P26	610/PJ26	Spring
P06	610/PJ06	Pump Foot	P27	610/PJ27	Coupling
P07	610/PJ07	Bolt	P28	610/PJ28	Dust Cap
P08	610/PJ08	O-ring	P29	610/PJ29	Ball Valve
P09	610/PJ09	O-ring Seal	P30	610/PJ30	Screw
P10	610/PJ10	Spacer	P31	610/PJ31	Ball Valve
P11	610/PJ11	Seal	P32	610/PJ32	Spring
P12	610/PJ12	Washer	P33	610/PJ33	Release Valve Stem
P13	610/PJ13	Cylinder	P34	610/PPJ34	Valve
P14	610/PJ14	Filter Ring	P35	610/PPJ35	Washer
P15	610/PJ15	Seal	P36	610/PJ36	Ball Valve
P16	610/PJ16	Washer	P37	610/PJ37	Stem
P17	610/PJ17	Plunger	P38	610/PJ38	Spring
P18	610/PJ18	Pump Pivot Arm	P39	610/PJ39	O-ring Seal
P19	610/PJ19	Pivot Pin	P40	610/PJ40	Screw (Safety Valve)
P20	610/PJ20	Pivot Pin	P41	610/PJ41	Plastic Cap
P21	610/PJ21	Circlip			



01284 757500



01284 703534

E-mail: sales@sealey.co.uk  
Web: www.sealey.co.uk