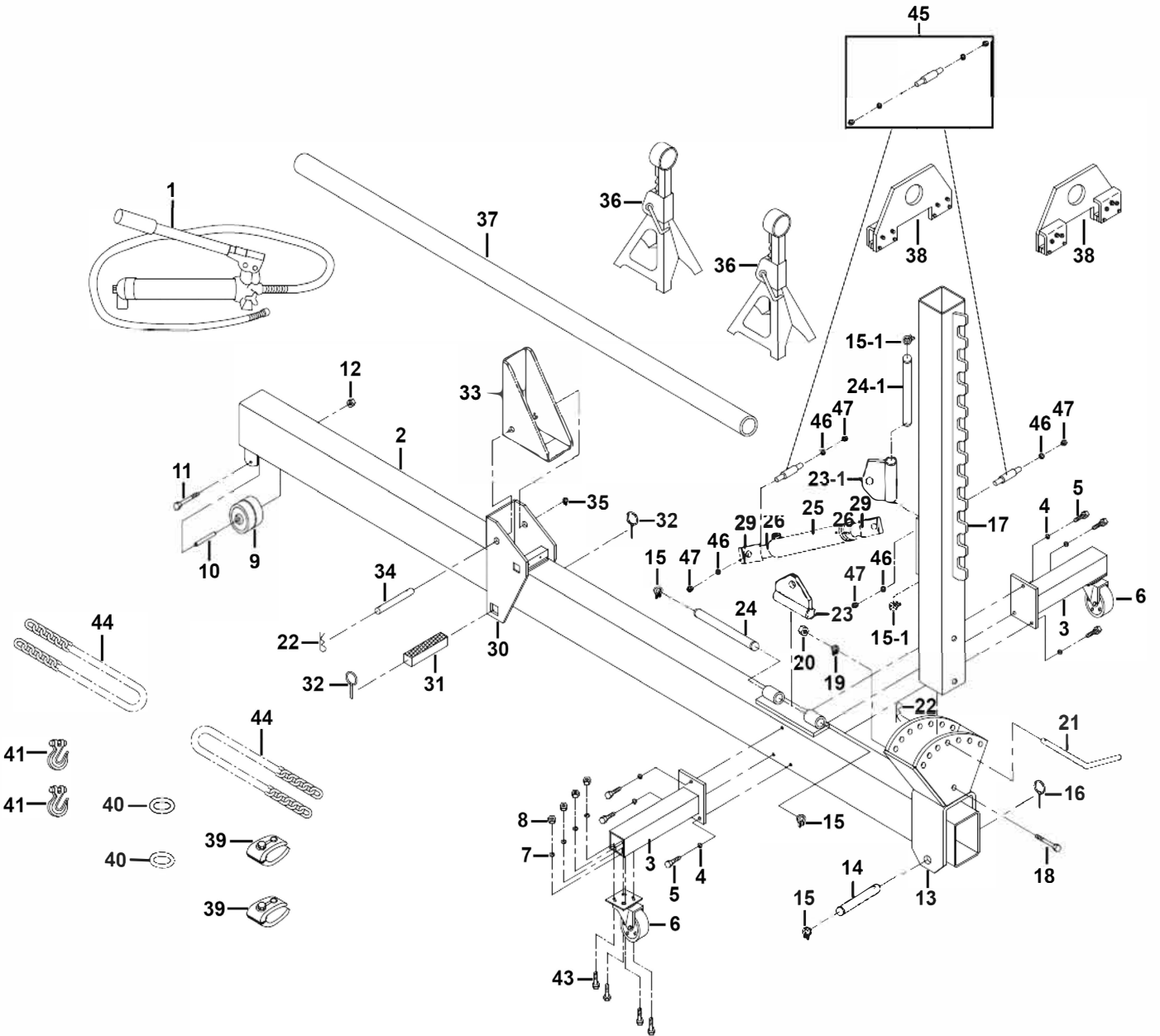




Parts Information:  
**Straightener Kit with Variable Upright**  
**Model No: DZRE21**



**NOTE:** It is our policy to continually improve products and as such we reserve the right to alter data, specifications and component parts without prior notice. There may be alternative versions of this product, please contact us should you require this information.

**IMPORTANT:** No liability is accepted for incorrect use of product. Spare parts must be fitted by a competent person

**WARRANTY:** Guarantee is 12 months from purchase date, proof of which will be required for any claim.

Sealey Group, Kempson Way, Suffolk Business Park, Bury St Edmunds, Suffolk. IP32 7AR



01284 757500



sales@sealey.co.uk



www.sealey.co.uk



Parts Information:  
**Straightener Kit with Variable Upright**  
**Model No: DZRE21**

Item	Part No.	Description
1	610/40	Hydraulic Pump, 10T
2	DZRE21.02	Main Beam
3	DZRE21.03	Arm Support, Castor Wheel
4	DZRE21.04	Spring Washer
5	DZRE21.05	Bolt
6	DZRE21.06	Wheel , Swivel Castor (Ø76 x 40 x Ø8 x 110)
7	DZRE21.07	Spring Washer
8	DZRE21.08	Nut
9	DZRE21.09	Wheel, Fixed (Ø77 x 37 x Ø12)
10	DZRE21.10	Bushing
11	DZRE21.11	Hex Head Bolt M8 x 100mm
12	SN8.S	Steel Nut M8
13	DZRE21.13	Tilting Support
14	DZRE21.14	Spindle
15	DZRE21.15	External Circlip, Lower
15-1	DZRE21.15-1	External Circlip, Upper
16	DZRE21.16	Pin
17	DZRE21.17	Post
18	DZRE21.18	Hex Head Bolt
19	DZRE21.19	Spring Washer
20	DZRE21.20	Nut
21	DZRE21.21	Lock Pin
22	DZRE21.22	R-Clip
23	DZRE21.23	Hinge, Lower

Item	Part No.	Description
23-1	DZRE21.23-1	Hinge, Upper
24	DZRE21.24	Hinge Pin, Lower
24-1	DZRE21.24-1	Hinge Pin, Upper
25	610/41	Push Ram, 10T
26	DZRE21.26	Ram Attachment (M)
29	DZRE21.29	Ram Attachment (F)
30	DZRE21.30	Bottom, Anchor Post
31	DZRE21.31	Stop Block
32	DZRE21.32	Pin
33	DZRE21.33	Top, Anchor Post
34	DZRE21.34	Spindle, Anchor Post
35	DZRE21.35	External Circlip
36	DZRE21.36	Support Stand
37	DZRE21.37	Cross Tube
38	DZRE21.38	Support Plate
39	DZRE21.39	Pull Clamp
40	DZRE21.40	Pull Ring
41	DZRE21.41	Hook Assembly
43	DZRE21.43	Screw
44	DZRE21.44	Chain
45	DZRE21.45-47	Spindle Kit
46	DZRE21.46	Spring Washer
47	DZRE21.47	Nut

**NOTE:** It is our policy to continually improve products and as such we reserve the right to alter data, specifications and component parts without prior notice. There may be alternative versions of this product, please contact us should you require this information.

**IMPORTANT:** No liability is accepted for incorrect use of product. Spare parts must be fitted by a competent person

**WARRANTY:** Guarantee is 12 months from purchase date, proof of which will be required for any claim.

Sealey Group, Kempson Way, Suffolk Business Park, Bury St Edmunds, Suffolk. IP32 7AR



01284 757500

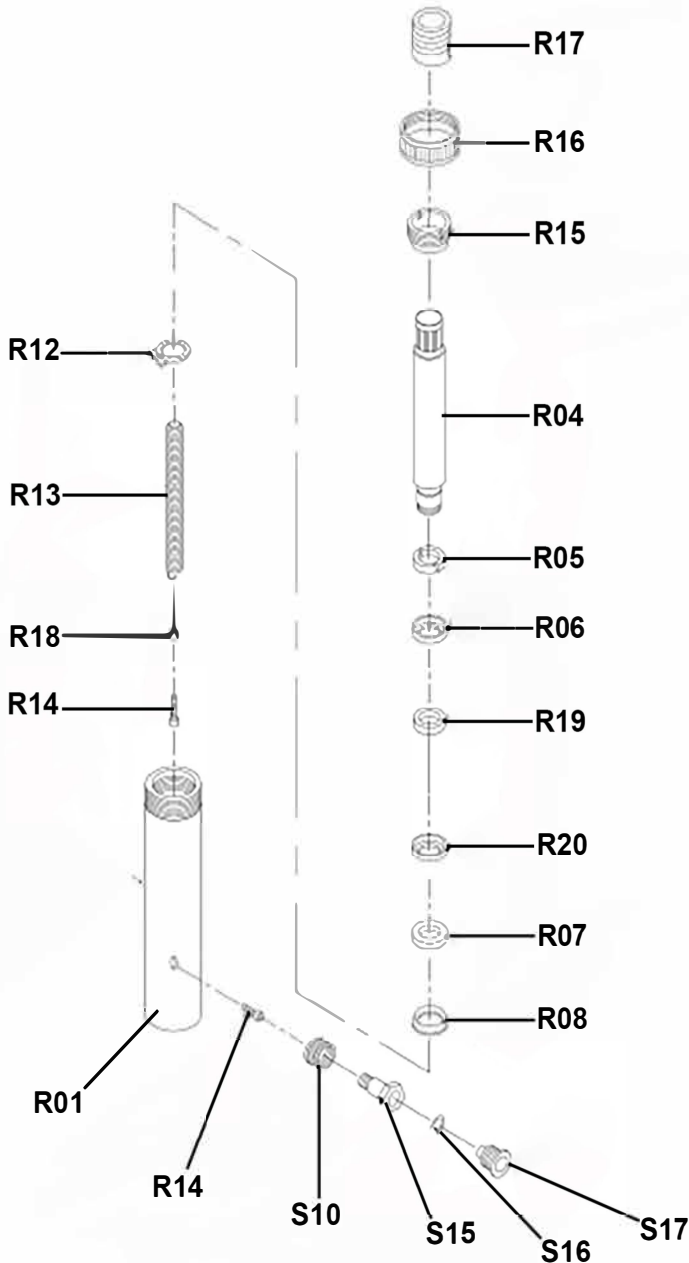


sales@sealey.co.uk



www.sealey.co.uk

## RAM ASSEMBLY



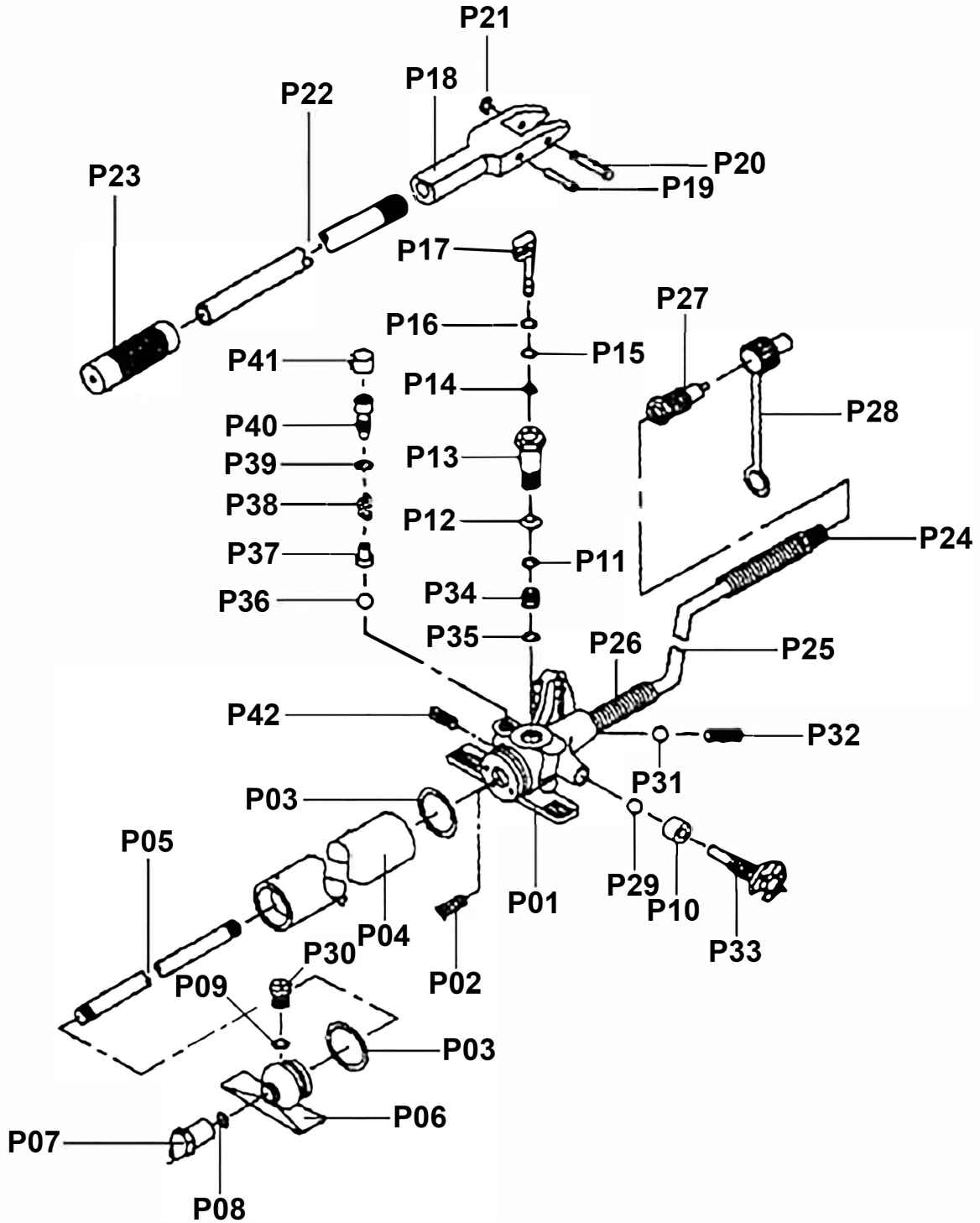
Item	Part No.	Description
R01	610.RJ01MA	Cylinder
R04	610.RJ04B	Ram
R05	610/RJ05	Half Bush
R06	610/RJ06	Bushing
R07	610.RJ07B	Cap (Ferrule)
R08	610.RJ08B	Y' Seal
R12	610.RJ12B	Snap Ring
R13	610/RJ13	Spring Ø19mm
R14	610/RJ14	Screw Set (M6 x 30mm & M6 x 20mm Skt Hd)
R15	610/RJ15	Ring
R16	610/RJ16	Protecting Cap SS
R17	610.RJ17N	Protecting Cap
R18	610/RJ18	Bushing
R19	610.RJ19B	Bearing
R20	610.RJ20B	Bearing
S10	610/SJ10	Coupling Ring
S15	610.SJ15A	Clamping Bolt
S16	610/SJ16	O-Ring (15.52 x 9.76 x 2.88)
S17	610/SJ17	Dust Cap
--	610.41-RK	Repair Kit, Push Ram (Not Shown)

**NOTE:** It is our policy to continually improve products and as such we reserve the right to alter data, specifications and component parts without prior notice. There may be alternative versions of this product, please contact us should you require this information.

**IMPORTANT:** No liability is accepted for incorrect use of product. Spare parts must be fitted by a competent person

**WARRANTY:** Guarantee is 12 months from purchase date, proof of which will be required for any claim.

## PUMP & HOSE ASSEMBLY



**NOTE:** It is our policy to continually improve products and as such we reserve the right to alter data, specifications and component parts without prior notice. There may be alternative versions of this product, please contact us should you require this information.

**IMPORTANT:** No liability is accepted for incorrect use of product. Spare parts must be fitted by a competent person

**WARRANTY:** Guarantee is 12 months from purchase date, proof of which will be required for any claim.



Parts Information:  
**Straightener Kit with Variable Upright**  
**Model No: DZRE21**

Item	Part No.	Description
P1	610/PJ01	Pump Housing
P2	610/PJ02	Filter
P3	610/PJ03	O-Ring (51.57 x 45.17 x 3.20)
P4	610/PJ04	Pump Reservoir
P5	610/PJ05	Screw
P6	610/PJ06	Pump Foot
P7	610/PJ07	Retaining Cap (M12 int thread)
P8	610/PJ08	O-Ring (20.34 x 15.50 x 2.42)
P9	SA316.10	O-Ring (12.83 x 7.59 x 2.62)
P10	610/PJ10	Spacer
P11	610/PJ11	O-Ring (25.72 x 18.66 x 3.53)
P12	610/PJ12	Washer, Dished M20 x 30mm
P13	610/PJ13	Cylinder
P14	610/PJ14	Filter Ring
P15	610/PJ15	O-Ring (12.49 x 6.72 x 3.39)
P16	610/PJ16	Washer M7 (Split Nylon)
P17	610/PJ17	Plunger
P18	610/PJ18	Pump Pivot Arm
P19	610/PJ19	Pin, Pivot Arm 1
P20	610/PJ20	Pin, Pivot Arm 2
P21	DAS150TV5-11	External Circlip ID. 9.3mm
P22	610/PJ22	Pump Handle

Item	Part No.	Description
P23	610/PJ23	Grip, Rubber Sleeve
P24	610/PJ24	Oil Fitting
P25	610/PJ25	Hose
P26	610/PJ26	Spring
P27	610/PJ27	Coupling
P28	610/PJ28	Dust Cap
P29	SB-4.7	Steel Ball 4.7mm
P30	610/PJ30	Screw
P31	SB-5.0	Steel Ball 5.0mm
P32	610/PJ32	Spring, Conical
P33	610/PJ33	Stem, Release Valve
P34	610/PJ34	Valve
P35	610/PJ35	Washer M8
P36	SB-5.0	Steel Ball 5.0mm
P37	610/PJ37	Stem
P38	610/PJ38	Spring Ø7.8mm
P39	610/PJ39	O-Ring (11.94 x 6.20 x 2.87)
P40	610/PJ40	Screw
P41	610/PJ41	Cap
P42	610.PJ42	Screw, Safety Valve
--	610/PJ27-28	Coupling + End Cap (Not Shown)

**NOTE:** It is our policy to continually improve products and as such we reserve the right to alter data, specifications and component parts without prior notice. There may be alternative versions of this product, please contact us should you require this information.

**IMPORTANT:** No liability is accepted for incorrect use of product. Spare parts must be fitted by a competent person

**WARRANTY:** Guarantee is 12 months from purchase date, proof of which will be required for any claim.

Sealey Group, Kempson Way, Suffolk Business Park, Bury St Edmunds, Suffolk. IP32 7AR



01284 757500



sales@sealey.co.uk



www.sealey.co.uk