

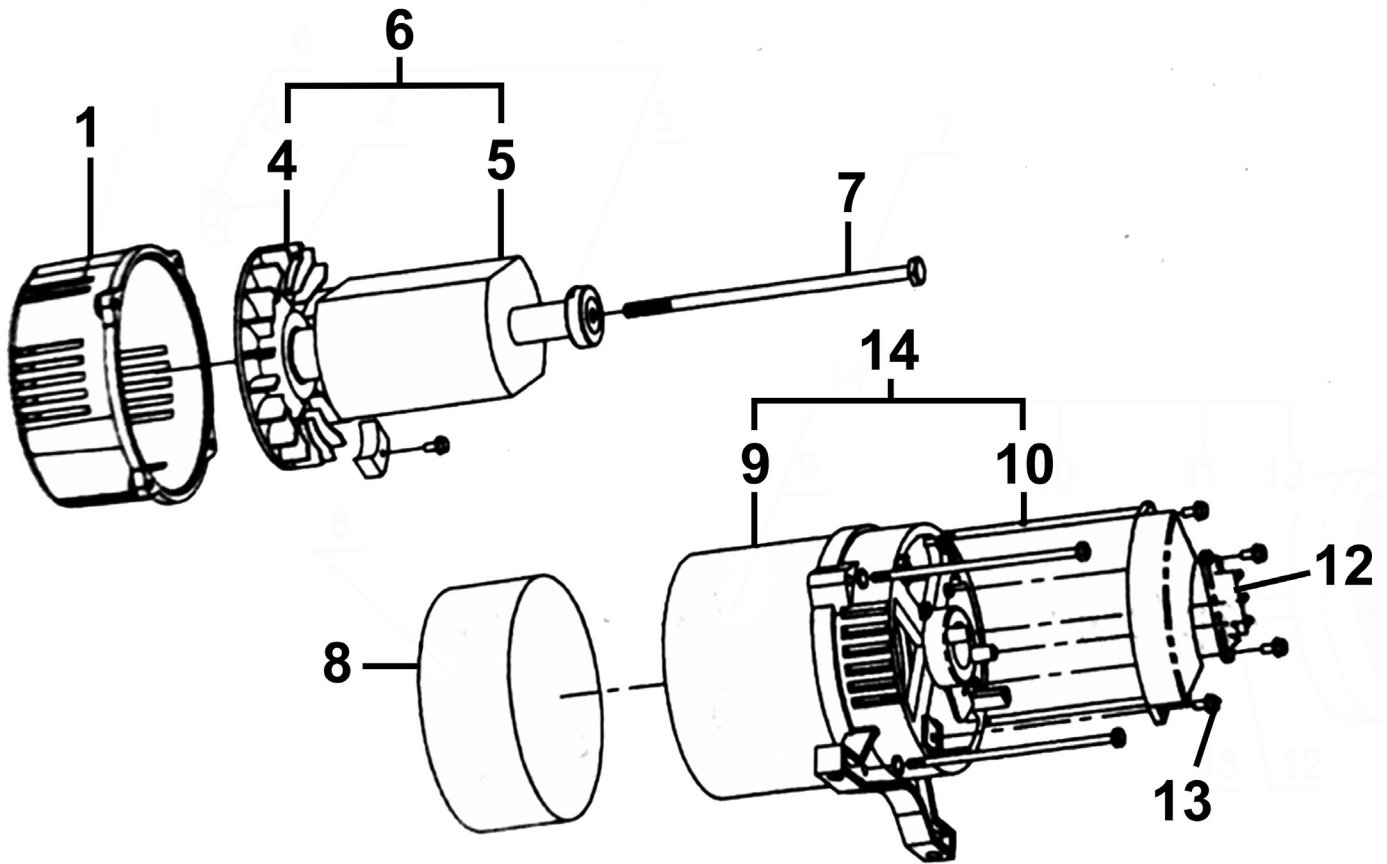
Item	Part No.	Description
1	DG7000-01	Muffler Cover Plate
2	DG7000-02	Muffler Elbow
3	DG7000-03	Outer Cover (Left Side)
4	DG7000-04	Main Cover
5	DG7000-05	Fuel Tank Sleeve
6	DG7000-06	Fuel Tank
7	DG7000-07	Door Knob
8	DG7000-08	Outer Cover (Right Side)
9	DG7000-09	Output Panel Assembly
10	DG7000-10	Air Cleaner Cover
11	DG7000-11	Lower Chassis

Item	Part No.	Description
12	DG7000-12	Engine Tray Mount
13	DG7000-13	Engine/Generator Tray
15	DG7000-15	Battery
16	DG7000-16	Battery Support Bar
17	DG7000-17	Cover Plate
--	DG7000-14	Wheel (Not Shown)
--	DG7000-18	Plate for Wheel (Not Shown)
--	DG7000-19	Wheel Axle (Not Shown)
--	DG7000-20	Muffler (Not Shown)
--	DG7000-21	Muffler Pipe(Not Shown)
--	DG7000-22	Recoil Starter Assembly (Not Shown)

NOTE: It is our policy to continually improve products and as such we reserve the right to alter data, specifications and component parts without prior notice. There may be alternative versions of this product, please contact us should you require this information.

IMPORTANT: No liability is accepted for incorrect use of product. Spare parts must be fitted by a competent person

WARRANTY: Guarantee is 12 months from purchase date, proof of which will be required for any claim.



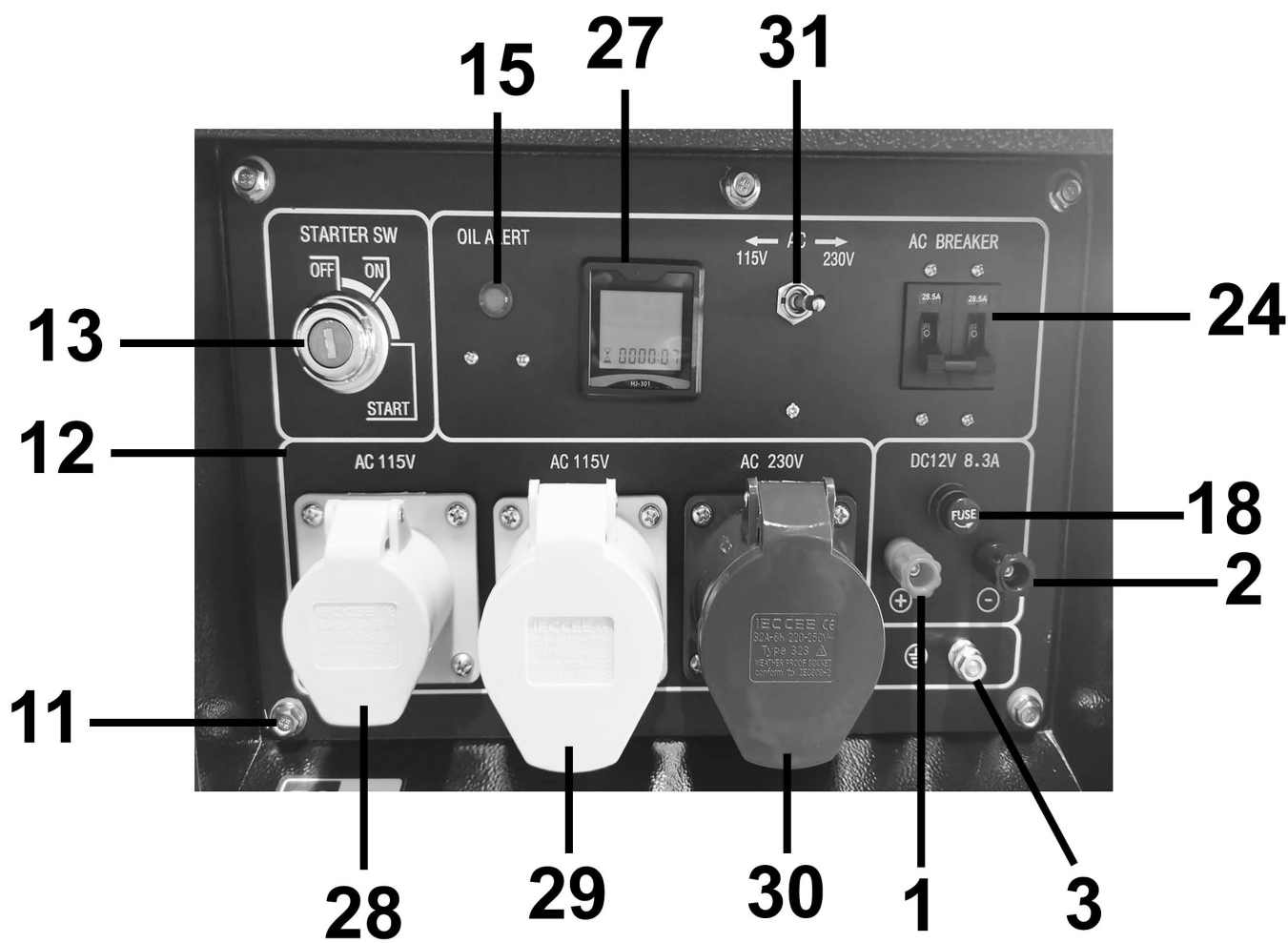
Item	Part No.	Description
1	DG7000-A01	Front End Cover
4	DG7000-A04	Fan Blade
5	DG7000-A05	Bearing
6	DG7000-A06	Rotor Unit
7	DG7000-A07	Centre Bolt
8	DG7000-A08	Motor Cover
9	DG7000-A09	Stator
10	DG7000-A10	Fixing Bolt (Long)

Item	Part No.	Description
12	DG7000-A12	Wiring Seat
13	MSP515.S	Machine Screw Pan Head Phillips M5x15mm (single)
14	DG7000-A14	Stator Unit
--	DG7000-A11	AVR (Not Shown)
--	DG7000-A16	Carbon Brush (Not Shown)
--	DG7000-A17	Back End Cover (Not Shown)

NOTE: It is our policy to continually improve products and as such we reserve the right to alter data, specifications and component parts without prior notice. There may be alternative versions of this product, please contact us should you require this information.

IMPORTANT: No liability is accepted for incorrect use of product. Spare parts must be fitted by a competent person

WARRANTY: Guarantee is 12 months from purchase date, proof of which will be required for any claim.



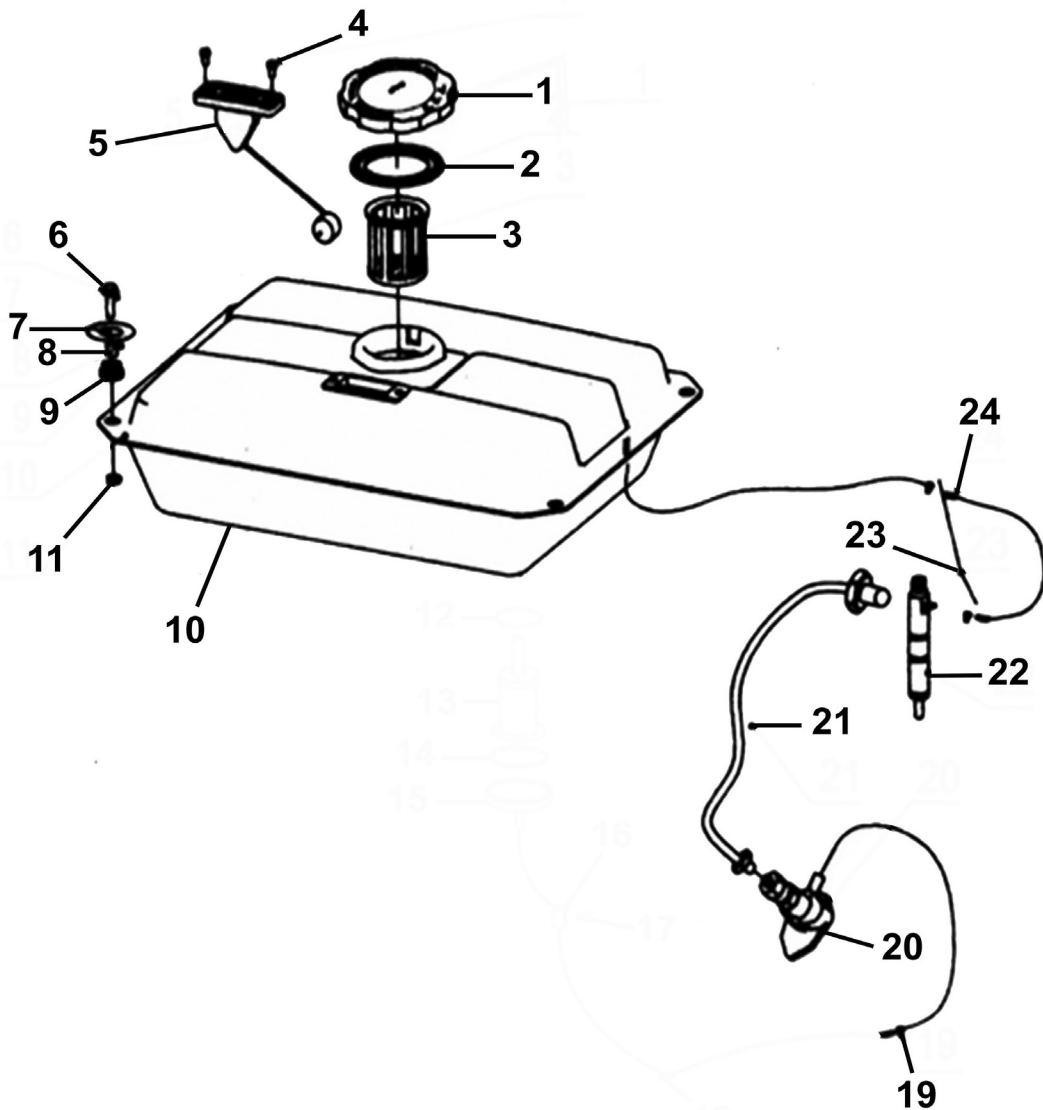
Item	Part No.	Description
1	DG7000-CP01	Positive DC Port
2	DG7000-CP02	Negative DC Port
3	DG7000-CP03	Grounded Bolt
11	DG7000-CP11	Electric Panel Bolt
12	DG7000-CP12	Electric Panel
13	DG7000-CP13	Starter Switch
15	DG7000-CP15	Oil Warning Lamp
18	DG7000-CP18	DC Fuse
24	DG7000-CP24	Circuit Breaker (Single Phase)
27	DG7000-CP27	Digital Meter
28	DG7000-CP28	Power Socket 32A 110V

Item	Part No.	Description
29	DG7000-CP29	Power Socket 16A 110V
30	DG7000-CP30	Power Socket 32A 230V
31	DG7000-CP31	Transform Switch 110/230V
--	DG7000-CP04	Bolt (Not Shown)
--	DG7000-CP05	Nut (Not Shown)
--	DG7000-CP06	Bolt (Not Shown)
--	DG7000-CP07	Bolt (Not Shown)
--	DG7000-CP14	Nut (Not Shown)
--	DG7000-CP22	Circuit Breaker Bracket (Not Shown)
--	DG7000-CP23	Nut for Circuit Breaker Bracket (Not Shown)
--	DG7000-CP25	Wiring Loom Assembly (Not Shown)

NOTE: It is our policy to continually improve products and as such we reserve the right to alter data, specifications and component parts without prior notice. There may be alternative versions of this product, please contact us should you require this information.

IMPORTANT: No liability is accepted for incorrect use of product. Spare parts must be fitted by a competent person

WARRANTY: Guarantee is 12 months from purchase date, proof of which will be required for any claim.



Item	Part No.	Description
1	DG7000-FT01	Fuel Tank Cap
2	DG7000-FT02	Fuel Tank Seal
3	DG7000-FT03	Fuel Tank Cup Filter
4	MSP510.S	Machine Screw Pan Head Phillips M5 x 10mm
5	DG7000-FT05	Fuel Level Indicator
6	SS625.S	Hex Head Set Screw M6 X 25 Zinc
7	FWM6.S	Flat Washer M6 Zinc
8	DG7000-FT08	Fuel Tank Lining
9	DG7000-FT09	Shock Absorber Cushion

Item	Part No.	Description
10	DG7000-FT10	Fuel Tank
11	SN6.S	Steel Nut M6 Zinc
19	DG7000-FT19	Fuel Inlet Pipe
20	DG7000-FT20	High Pressure Fuel Pump
21	DG7000-FT21	High Pressure Fuel Pipe
22	DG7000-FT22	Fuel Injector
23	DG7000-FT23	Overfill Tube
24	DG7000-FT24	Fuel Overload Pipe
--	DG7000-FT25	Fuel Filter (Not Shown)

NOTE: It is our policy to continually improve products and as such we reserve the right to alter data, specifications and component parts without prior notice. There may be alternative versions of this product, please contact us should you require this information.

IMPORTANT: No liability is accepted for incorrect use of product. Spare parts must be fitted by a competent person

WARRANTY: Guarantee is 12 months from purchase date, proof of which will be required for any claim.