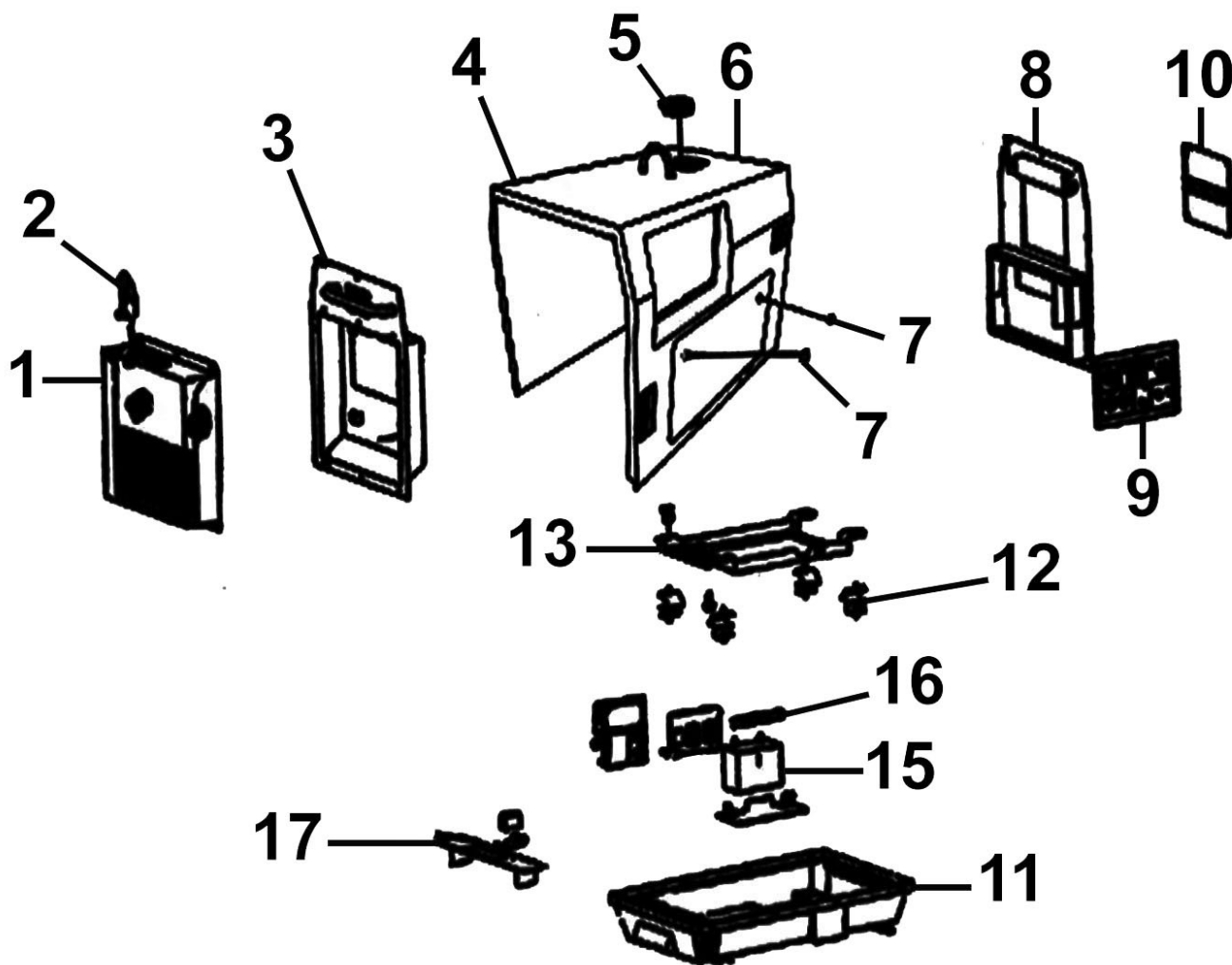


Parts Information: 5000W Diesel Generator 4-Stroke Engine 110/230V Model No: DG5000.V2



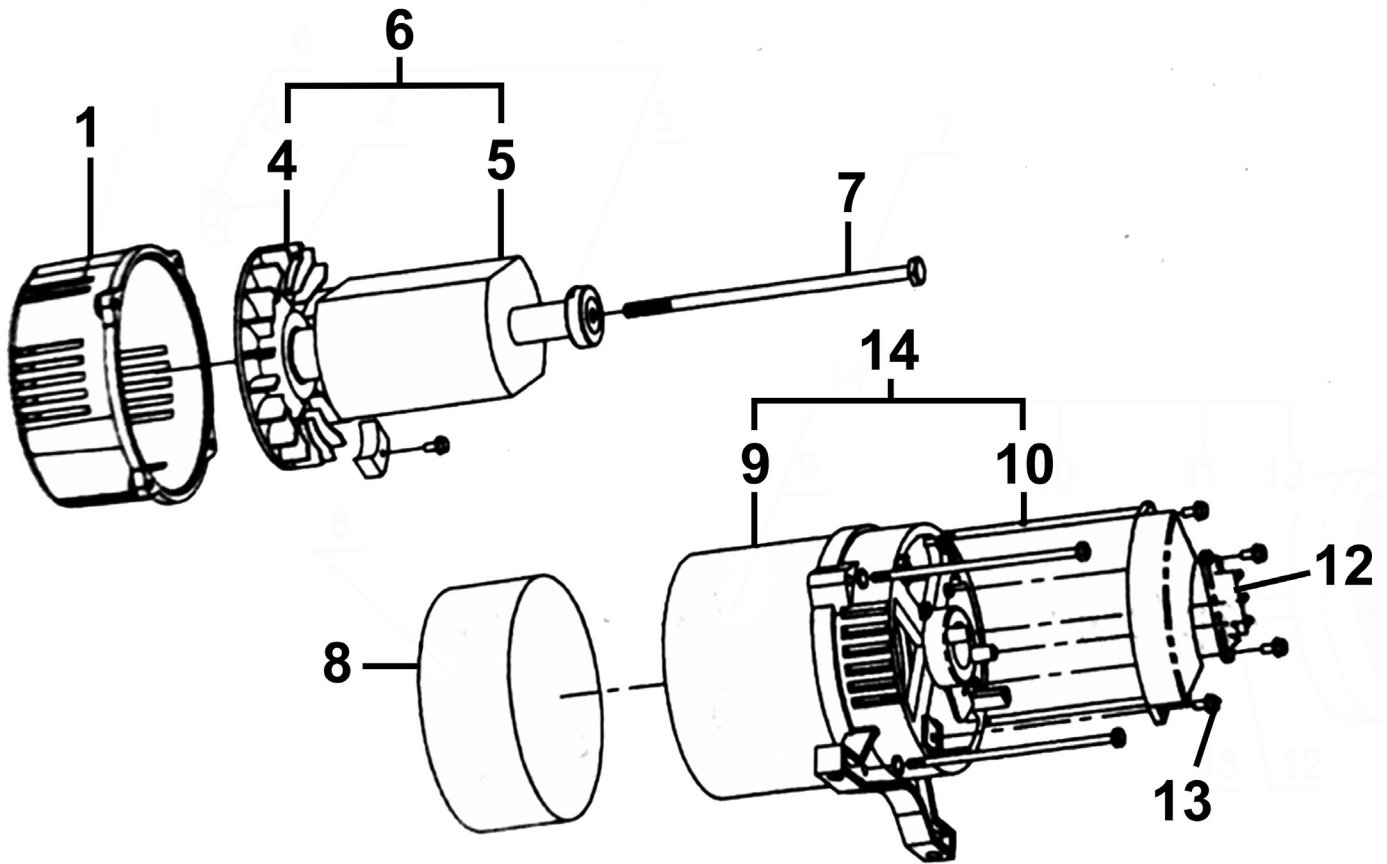
| Item | Part No. | Description |
|------|--------------|--------------------------|
| 1 | DG7000-01 | Muffler Cover Plate |
| 2 | DG7000-02 | Muffler Elbow |
| 3 | DG5000-V2-03 | Outer Cover (Left Side) |
| 4 | DG5000-V2-04 | Main Cover |
| 5 | DG7000-05 | Fuel Tank Sleeve |
| 6 | DG7000-06 | Fuel Tank |
| 7 | DG7000-07 | Door Knob |
| 8 | DG5000-V2-08 | Outer Cover (Right Side) |
| 9 | DG5000-V2-09 | Output Panel Assembly |
| 10 | DG7000-10 | Air Cleaner Cover |
| 11 | DG7000-11 | Lower Chassis |

| Item | Part No. | Description |
|------|--------------|-------------------------------------|
| 12 | DG5000-V2-12 | Engine Tray Mount |
| 13 | DG5000-V2-13 | Engine/Generator Tray |
| 15 | DG7000-15 | Battery |
| 16 | DG7000-16 | Battery Support Bar |
| 17 | DG5000-V2-17 | Cover Plate |
| -- | DG7000-14 | Wheel (Not Shown) |
| -- | DG7000-18 | Plate for Wheel (Not Shown) |
| -- | DG7000-19 | Wheel Axle (Not Shown) |
| -- | DG5000-V2-20 | Muffler (Not Shown) |
| -- | DG5000-V2-21 | Muffler Pipe (Not Shown) |
| -- | DG5000-V2-22 | Recoil Starter Assembly (Not Shown) |

NOTE: It is our policy to continually improve products and as such we reserve the right to alter data, specifications and component parts without prior notice. There may be alternative versions of this product, please contact us should you require this information.

IMPORTANT: No liability is accepted for incorrect use of product. Spare parts must be fitted by a competent person

WARRANTY: Guarantee is 12 months from purchase date, proof of which will be required for any claim.



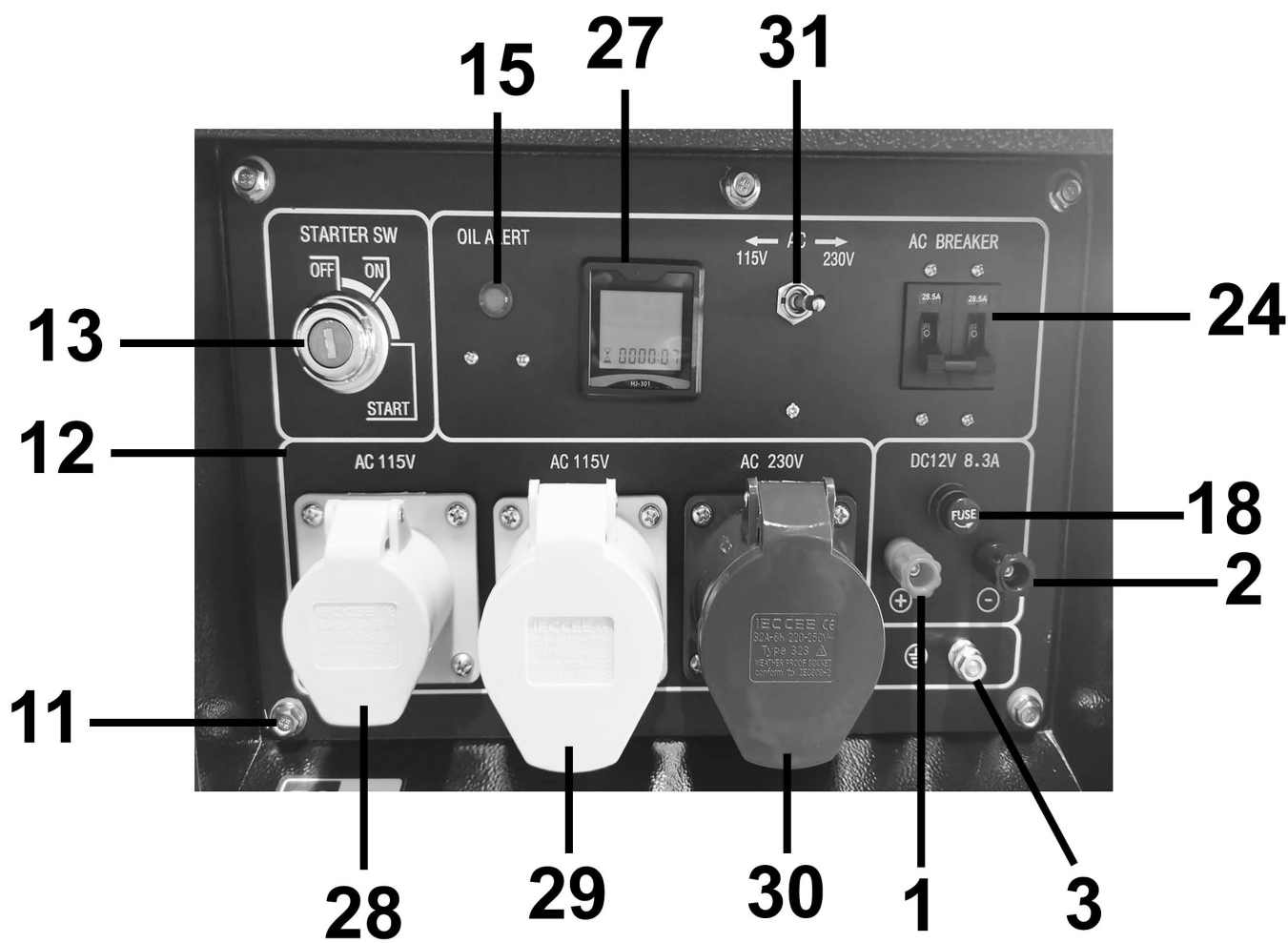
| Item | Part No. | Description |
|------|---------------|--------------------|
| 1 | DG5000-V2-A01 | Front End Cover |
| 4 | DG5000-V2-A04 | Fan Blade |
| 5 | DG5000-V2-A05 | Bearing |
| 6 | DG5000-V2-A06 | Rotor Unit |
| 7 | DG5000-V2-A07 | Centre Bolt |
| 8 | DG5000-V2-A08 | Motor Cover |
| 9 | DG5000-V2-A09 | Stator |
| 10 | DG5000-V2-A10 | Fixing Bolt (Long) |

| Item | Part No. | Description |
|------|---------------|--|
| 12 | DG5000-V2-A12 | Wiring Seat |
| 13 | MSP515.S | Machine Screw Pan Head Phillips M5x15mm (single) |
| 14 | DG5000-V2-A14 | Stator Unit |
| -- | DG5000-V2-A11 | AVR (Not Shown) |
| -- | DG7000-A16 | Carbon Brush (Not Shown) |
| -- | DG5000-V2-A17 | Back End Cover (Not Shown) |

NOTE: It is our policy to continually improve products and as such we reserve the right to alter data, specifications and component parts without prior notice. There may be alternative versions of this product, please contact us should you require this information.

IMPORTANT: No liability is accepted for incorrect use of product. Spare parts must be fitted by a competent person

WARRANTY: Guarantee is 12 months from purchase date, proof of which will be required for any claim.



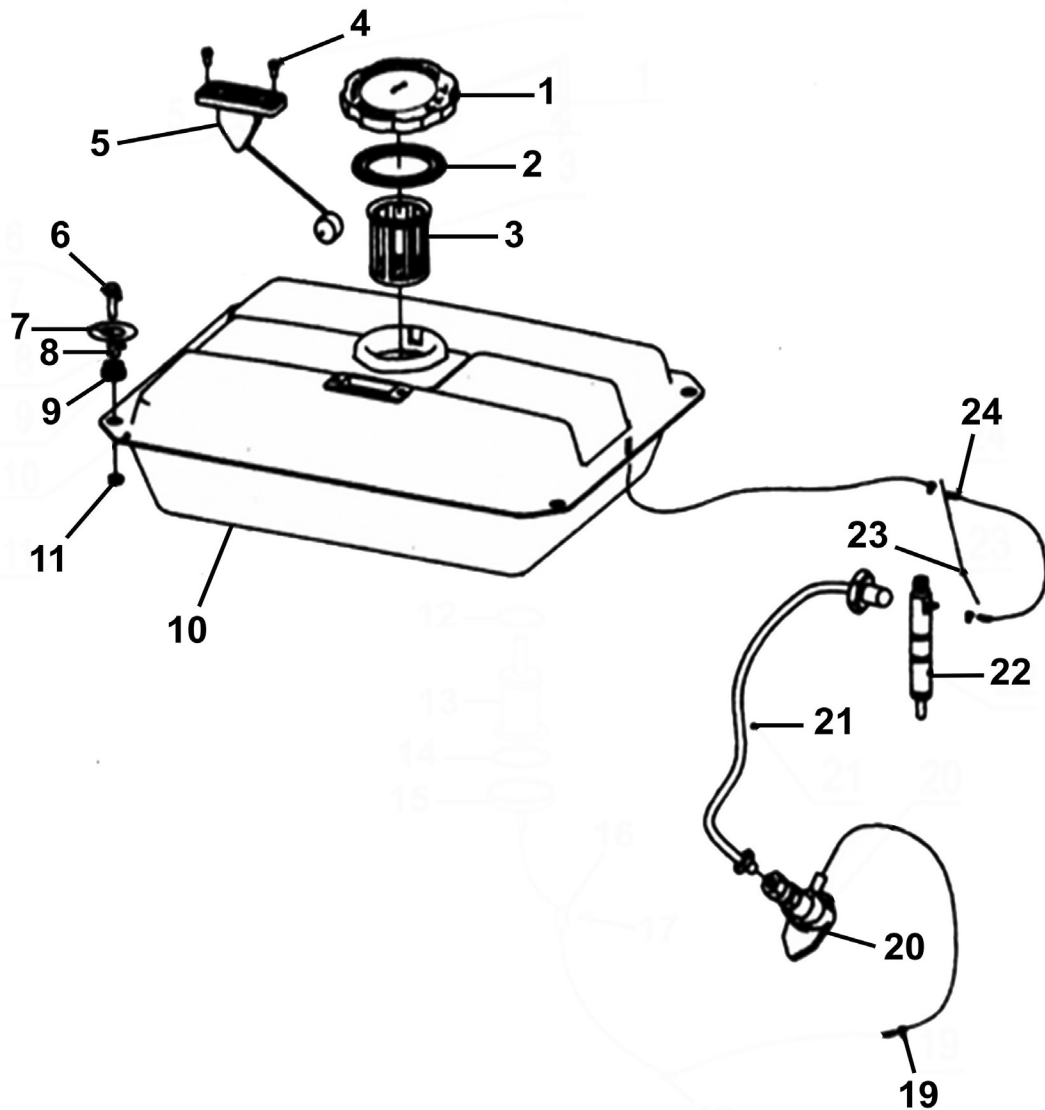
| Item | Part No. | Description |
|------|----------------|--------------------------------|
| 1 | DG7000-CP01 | Positive DC Port |
| 2 | DG7000-CP02 | Negative DC Port |
| 3 | DG7000-CP03 | Grounded Bolt |
| 11 | DG7000-CP11 | Electric Panel Bolt |
| 12 | DG5000-V2-CP12 | Electric Panel |
| 13 | DG7000-CP13 | Starter Switch |
| 15 | DG7000-CP15 | Oil Warning Lamp |
| 18 | DG7000-CP18 | DC Fuse |
| 24 | DG5000-V2-CP24 | Circuit Breaker (Single Phase) |
| 27 | DG7000-CP27 | Digital Meter |
| 28 | DG7000-CP28 | Power Socket 32A 110V |

| Item | Part No. | Description |
|------|-------------|-------------------------------------|
| 29 | DG7000-CP29 | Power Socket 16A 110V |
| 30 | DG7000-CP30 | Power Socket 32A 230V |
| 31 | DG7000-CP31 | Transform Switch 110/230V |
| -- | DG7000-CP04 | Bolt (Not Shown) |
| -- | DG7000-CP05 | Nut (Not Shown) |
| -- | DG7000-CP06 | Bolt (Not Shown) |
| -- | DG7000-CP07 | Bolt (Not Shown) |
| -- | DG7000-CP14 | Nut (Not Shown) |
| -- | DG7000-CP22 | Circuit Breaker Bracket (Not Shown) |
| -- | DG7000-CP23 | Nut (Not Shown) |
| -- | DG7000-CP25 | Wiring Loom Assembly (Not Shown) |

NOTE: It is our policy to continually improve products and as such we reserve the right to alter data, specifications and component parts without prior notice. There may be alternative versions of this product, please contact us should you require this information.

IMPORTANT: No liability is accepted for incorrect use of product. Spare parts must be fitted by a competent person

WARRANTY: Guarantee is 12 months from purchase date, proof of which will be required for any claim.



| Item | Part No. | Description |
|------|-------------|---|
| 1 | DG7000-FT01 | Fuel Tank Cap |
| 2 | DG7000-FT02 | Fuel Tank Seal |
| 3 | DG7000-FT03 | Fuel Tank Cup Filter |
| 4 | MSP510.S | Machine Screw Pan Head Phillips M5 x 10mm |
| 5 | DG7000-FT05 | Fuel Level Indicator |
| 6 | SS625.S | Hex Head Set Screw M6 X 25 Zinc |
| 7 | FWM6.S | Flat Washer M6 Zinc |
| 8 | DG7000-FT08 | Fuel Tank Lining |
| 9 | DG7000-FT09 | Shock Absorber Cushion |

| Item | Part No. | Description |
|------|----------------|-------------------------|
| 10 | DG7000-FT10 | Fuel Tank |
| 11 | SN6.S | Steel Nut M6 Zinc |
| 19 | DG5000-V2-FT19 | Fuel Inlet Pipe |
| 20 | DG5000-V2-FT20 | High Pressure Fuel Pump |
| 21 | DG5000-V2-FT21 | High Pressure Fuel Pipe |
| 22 | DG5000-V2-FT22 | Fuel Injector |
| 23 | DG5000-V2-FT23 | Overfill Tube |
| 24 | DG5000-V2-FT24 | Fuel Overload Pipe |
| -- | DG7000-FT25 | Fuel Filter (Not Shown) |

NOTE: It is our policy to continually improve products and as such we reserve the right to alter data, specifications and component parts without prior notice. There may be alternative versions of this product, please contact us should you require this information.

IMPORTANT: No liability is accepted for incorrect use of product. Spare parts must be fitted by a competent person

WARRANTY: Guarantee is 12 months from purchase date, proof of which will be required for any claim.