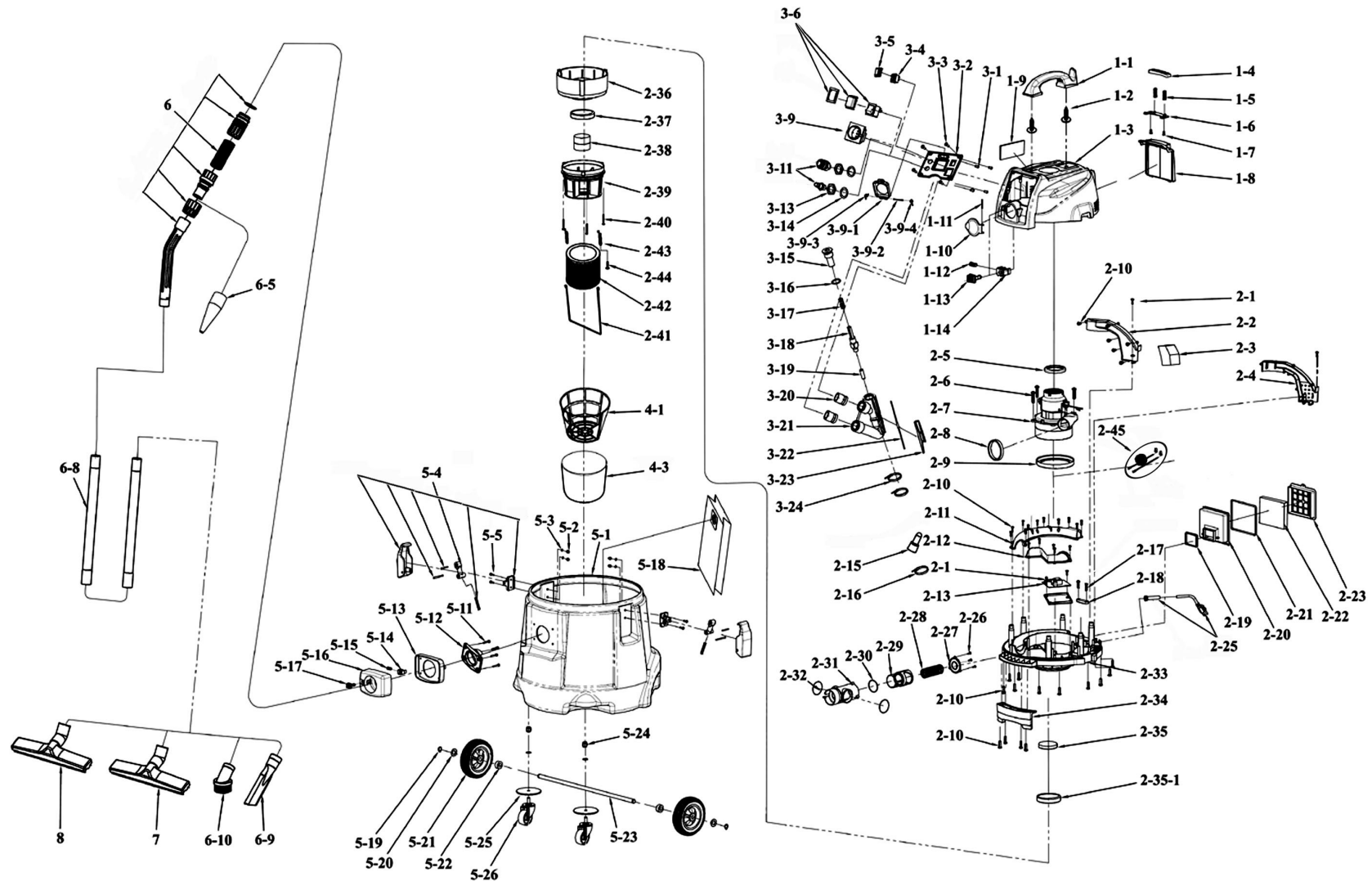




Parts Information: Combination Dust-Free/Wet & Dry Vacuum System Air/Electric - 28ltr Model No: DFS55



NOTE: It is our policy to continually improve products and as such we reserve the right to alter data, specifications and component parts without prior notice.

IMPORTANT: No liability is accepted for incorrect use of product.

WARRANTY: Guarantee is 12 months from purchase date, proof of which will be required for any claim.

Sealey Group, Kempson Way, Suffolk Business Park, Bury St Edmunds, Suffolk. IP32 7AR



01284 757500



01284 703534



sales@sealey.co.uk



www.sealey.co.uk



Parts Information:
**Combination Dust-Free/Wet & Dry Vacuum
 System Air/Electric - 28ltr
 Model No: DFS55**

Item	Part No.	Description
	DFS55.01	TOP HEAD ASS'Y
1-1	DFS55.01-1	HANDLE
1-2	DFS55.01-2	SCREW 1/4"*15
1-3	DFS55.01-3	TOP COVER
1-4	DFS55.01-4	BUTTON
1-5	DFS55.01-5	SPRING
1-6	DFS55.01-6	CLIP
1-7	DFS55.01-7	RD HEAD S/T SCREW M3X8
1-8	DFS55.01-8	BACK COVER
1-9	DFS55.01-9	SPONGE
1-10	DFS55.01-10	BLOWER COVER
1-11	DFS55.01-11	PIN 3x35
1-12	DFS55.01-12	SPRING
1-13	DFS55.01-13	BUTTON
1-14	DFS55.01-14	SWITCH BASE
	DFS55.02	MOTOR ASS'Y
2-1	DFS55.02-1	SCREW M4x10L
2-2	DFS55.02-2	COOLING TUBE - LEFT
2-3	DFS55.02-3	SPONGE
2-4	DFS55.02-4	COOLING TUBE - RIGHT
2-5	DFS55.02-5	SEAL
2-6	DFS55.02-6	SCREW M5*20
2-7	DFS55.02-7	BLOW MOTOR
2-8	DFS55.02-8	GASKET L:171mm
2-9	DFS55.02-9	GASKET
2-10	DFS55.02-10	SCREW M4*16
2-11	DFS55.02-11	PLATE 2
2-12	DFS55.02-12	PLATE 3
2-13	DFS55.02-13	PC BOARD ASS'Y
2-15	DFS55.02-15	TERMINAL CE-2
2-16	DFS55.02-16	TIE

Item	Part No.	Description
2-17	DFS55.02-17	SCREW M3.5*12
2-18	DFS55.02-18	WIRE CORD
2-19	DFS55.02-19	SQUARE SEAL
2-20	DFS55.02-20	FILTER BOX
2-21	DFS55.02-21	SQUARE SEAL
2-22	DFS55.02-22	SPONGE
2-23	DFS55.02-23	FILTER FRAME
2-25	MC3CX1.5	MAINS CABLE BLK, 3 CORE, 1.5MM2
2-26	DFS55.02-26	SCREW M4*12
2-27	DFS55.02-27	CONTROLLER COVER
2-28	DFS55.02-28	SPRING
2-29	DFS55.02-29	CONTROLLER
2-30	DFS55.02-30	O-RING P45
2-31	DFS55.02-31	BLOWER COVER
2-32	DFS55.02-32	GASKET
2-33	DFS55.02-33	HOUSING BASE
2-34	DFS55.02-34	HOLDER
2-35	DFS55.02-35	GASKET
2-35-1	DFS55.02-35-1	SEAL 3MM X 20MM X 1125MM
2-36	DFS55.02-36	FRAME
2-37	DFS55.02-37	GASKET
2-38	DFS55.02-38	FLOAT - SHORT
2-39	DFS55.02-39	FRAME
2-40	DFS55.02-40	SCREW M5*70
2-41	DFS55.02-41	HOOK
2-42	DFS55.02-42	CARTRIDGE FILTER
2-43	DFS55.02-43	SPRING
2-44	DFS55.02-44	SCREW M5x12
2-45	DFS55.02-45	FILTER ASS'Y
--	DFS55.02-49	WASHER (NOT SHOWN)
--	DFS55.02-50	SCREW M4*10 (NOT SHOWN)

NOTE: It is our policy to continually improve products and as such we reserve the right to alter data, specifications and component parts without prior notice.

IMPORTANT: No liability is accepted for incorrect use of product.

WARRANTY: Guarantee is 12 months from purchase date, proof of which will be required for any claim.

Sealey Group, Kempson Way, Suffolk Business Park, Bury St Edmunds, Suffolk. IP32 7AR



01284 757500



01284 703534



sales@sealey.co.uk



www.sealey.co.uk



Parts Information:
**Combination Dust-Free/Wet & Dry Vacuum
 System Air/Electric - 28ltr
 Model No: DFS55**

Item	Part No.	Description
	DFS55.03	PARALLEL SOCKET ASS'Y
3-1	DFS55.03-1	NUT LONG NUT WITH RIM
3-2	DFS55.03-2	PLATE
3-3	DFS55.03-3	COUNTERSUNK MACHINE SCREW M3x8
3-4	DFS55.03-4	PARALLEL SWITCH
3-5	DFS55.03-5	TRANSPARENT COVER
3-6	PC455.03-48	SWITCH
3-9	DFS55.03-9	SOCKET
3-9-1	DFS55.03-9-1	COVER
3-9-2	DFS55.03-9-2	PIN
3-9-3	DFS55.03-9-3	SPRING
3-9-4	DFS55.03-9-4	SPRING
--	DFS55.03-10	SCREW M4*12 (NOT SHOWN)
3-11	DFS55.03-11	QUICK CONNECTOR MALE PT1/4 c/w FEMALE PT
3-13	DFS55.03-13	NUT
3-14	DFS55.03-14	WASHER
3-15	DFS55.03-15	SCREW (Modified)
3-16	DFS55.03-16	O-SEAL P14
3-17	DFS55.03-17	SPRING
3-18	DFS55.03-18	BAR
3-19	DFS55.03-19	MAGNET L:20mm
3-20	DFS55.03-20	NUT
3-21	DFS55.03-21	TRIPLE CONNECTOR
3-22	DFS55.03-22	MAGNETIC SWITCH
3-23	DFS55.03-23	COVER OF MAGNETIC SWITCH
3-24	DFS55.03-24	TIE
	DFS55.04	FILTER ASS'Y
4-1	DFS55.04-1	FRAME
4-3	DFS55.04-3	FINE PARTICLE FILTER

Item	Part No.	Description
	DFS55.05	TANK ASS'Y
5-1	DFS55.05-1	TANK
5-2	DFS55.05-2	DOME NUT M4 (STAINLESS STEEL)
5-3	DFS55.05-3	WASHER
5-4	DFS55.05-4	CLIP BASE ASS'Y
5-5	DFS55.05-5	SCREW M4*12L
5-11	DFS55.05-11	SCREW M5*25L
5-12	DFS55.05-12	SUCTION CONNECTOR C
5-13	DFS55.05-13	FIXER
5-14	DFS55.05-14	SWITCH BASE
5-15	DFS55.05-15	SPRING
5-16	DFS55.05-16	SUCTION CONNECTOR COVER
5-17	DFS55.05-17	BUTTON
5-18	DFS55.05-18	DUST COLLECTION BAG 355*560
5-19	DFS55.05-19	C-RING
5-20	DFS55.05-20	WASHER
5-21	DFS55.05-21	WHEEL, REAR FIXED (124x12x30)
5-22	DFS55.05-22	BUSHING
5-23	DFS55.05-23	PIN
5-24	DFS55.05-24	NUT
5-25	DFS55.05-25	REPAIR WASHER M8x80
5-26	DFS55.05-26	WHEEL,FRONT CASTOR (50x7x21x69)
6	PC455.05-1	HOSE 3m
6-5	DFS55.06-5	RUBBER CONNECTOR
6-8	PC455.05-5	TUBE EXTENSION (2PCS)
6-9	DFS55.06-9	CREVICE TOOL
6-10	DFS55.06-10	ROUND BRUSH
7	DFS55.07	SQUEEGEE NOZZLE ASS'Y
8	DFS55.08	BRUSH NOZZLE ASS'Y

NOTE: It is our policy to continually improve products and as such we reserve the right to alter data, specifications and component parts without prior notice.

IMPORTANT: No liability is accepted for incorrect use of product.

WARRANTY: Guarantee is 12 months from purchase date, proof of which will be required for any claim.

Sealey Group, Kempson Way, Suffolk Business Park, Bury St Edmunds, Suffolk. IP32 7AR



01284 757500



01284 703534



sales@sealey.co.uk



www.sealey.co.uk