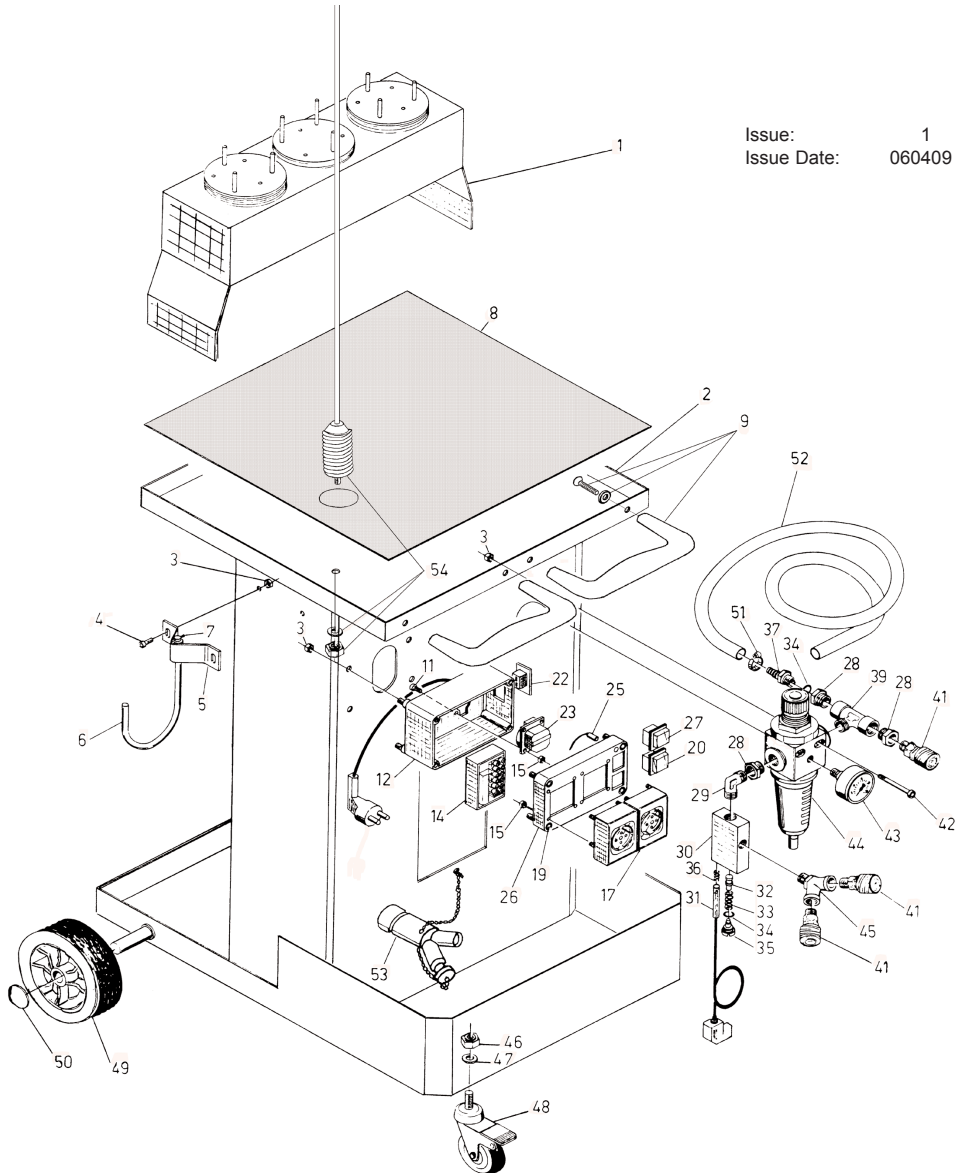


Issue: 1
 Issue Date: 060409



ITEM	PART NO	DESCRIPTION	ITEM	PART NO	DESCRIPTION
1	122/71.03.00	DISC DISPENSER	30	122.10.05.35	VALVE BODY
2	122.10.20.80	BODY	31	122.99.03.07	MAGNETIC SWITCH
3	122/29.01.12	NUT	32	122.99.03.151	VALVE PISTON
4	122/11.04.10	SCREW	33	122.99.03.111	SPRING FOR VALVE
5	122/27.02.60	BRACKET	34	122/17.01.50	O-RING
6	122/27.04.06	HOOK	35	122.91.50.07	VALVE PLUG
7	122/23.01.40	PIN	36	122/99.03.03	SPRING
8	122/27.05.15	RUBBER SHEET	37	122/97.32.58	HOSE INLET 3/8" M
9	122/10.15.10	HANDLE COMPLETE	39	122/97.43.43	CONNECTION 1/2" F,F,M
11	122/11.09.14	SCREW	41	122/97.08.03U	U TAP 3/8" UNIVERSAL
12	122/74.01.14	HOUSING	42	122/11.06.12	SCREW
14	122/98.03.40	ELECTRONIC CARD	43	122/98.02.05	GAUGE .50
15	122/21.04.10	PROTECTION PLUG	44	122/98.01.20	PRESSURE REGULATOR 1/2"
17	122/34.02.01	SOCKET KIT COMPLETE	45	122/97.43.22	CONNECTION 3/8" M,F,F
19	122/74.01.16	SCREW	46	122/29.01.20	NUT
20	122/34.06.77	SWITCH	47	122/13.02.16	WASHER
22	122/34.02.48	VALVE SOCKET	48	122/29.01.20	CASTOR WHEEL with BRAKE
23	122/34.02.02	SOCKET	49	122/99.15.50	WHEEL
25	122/74.01.17	LED INDICATOR	50	122/13.20.22	AXLE CAP
26	122/74.01.15	COVER	51	122/24.50.12	HOSE CLIP
27	122/34.03.75	SWITCH MANUAL/AUT	52	122/66.01.54	HOSE 13/19 5 MTR
28	122/97.41.43	REDUCER 1/2" M - 3/8" F	53	122/36.01.39	VAC DOUBLE SUCTION ADAPTOR
29	122/97.43.17	3/8" ELBOW M-M	54	122/25.02.40	SUCTION TUBE SUPPORT POLE

NOTE: It is our policy to continually improve products and as such we reserve the right to alter data, specifications and component parts without prior notice.

IMPORTANT: No liability is accepted for incorrect use of product.

WARRANTY: Guarantee is 12 months from purchase date, proof of which will be required for any claim.

INFORMATION: For a copy of our latest catalogue and promotions call us on 01284 757525 and leave your full name and address, including postcode.

