

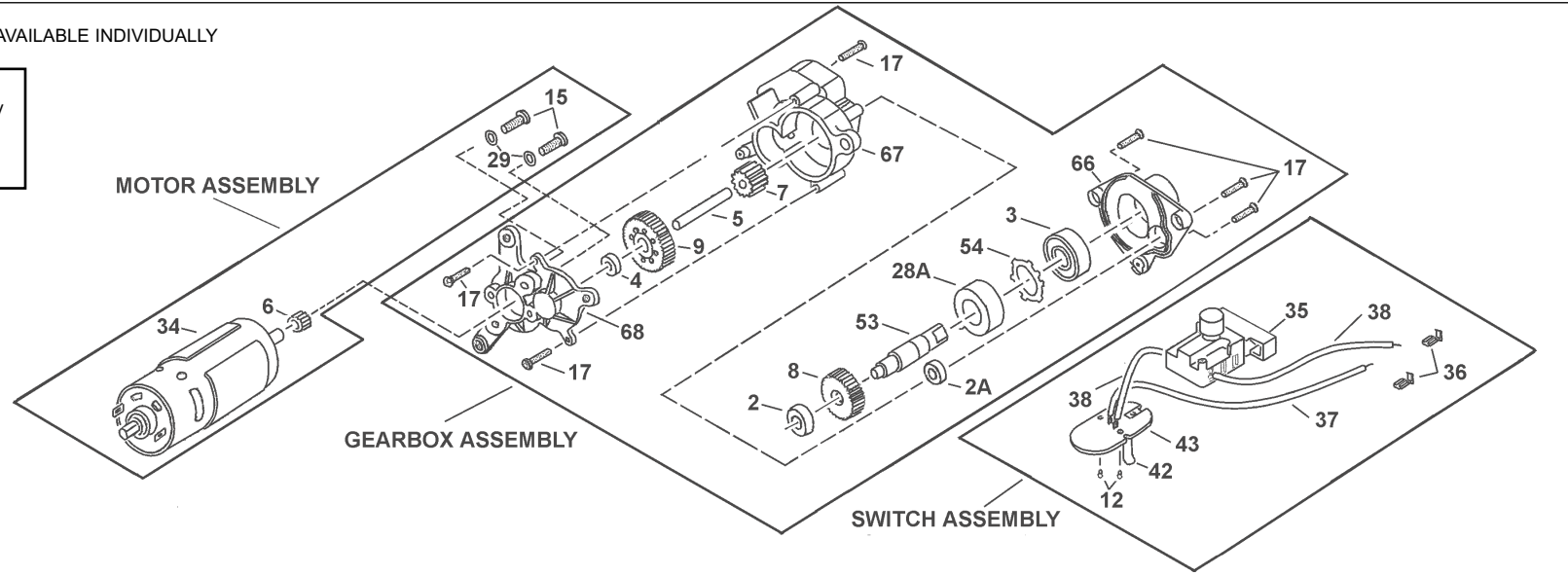


Sole U.K. Distributor,
Sealey Group,
Bury St. Edmunds,
Suffolk.

PARTS DIAGRAM FOR:
CORDLESS CIRCULAR SAW
Model: **CPS1418V**

NOTE: ITEMS WITHIN ASSEMBLIES NOT AVAILABLE INDIVIDUALLY

Item	Part No.	Description
-	CPS1418V/GA	Gearbox Assembly
-	CPS1418V/MA	Motor Assembly
-	CPS1418V/SA	Switch Assembly



Issue No: 2
Date: 210302

Item	Part No.	Description
1	CPS1418V/01	Hex. Key
2	CPS1418V/GA	Bearing
2A	CPS1418V/GA	Bearing
3	CPS1418V/GA	Bearing
4	CPS1418V/GA	Bush
5	CPS1418V/GA	Pin
7	CPS1418V/GA	Gear, 20T
8	CPS1418V/GA	Gear, 34T
9	CPS1418V/GA	Gear, 45T
10	CPS1418V/10	Torsion Spring, Guard
11	CPS1418V/11	Spring, Lock Pin
12	CPS1418V/SA	Rivet
13	CPS1418V/13	Rivet, Guide Plate
14	CPS1418V/14	Screw, M4 x 8
16	CPS1418V/16	Screw, Tapitite, M3 x 12
17	CPS1418V/GA	Screw, M3 x 10
18	CPS1418V/18	Screw, M2.6 x 8
19	CPS1418V/19	Screw, Tapitite, M3.5 x 15
20	CPS1418V/20	Screw, Tapitite, M3.5 x 10
21	CPS1418V/21	Bolt, M6

Item	Part No.	Description
22	CPS1418V/22	Screw, M4 x 13
23	CPS1418V/23	Screw, Tapitite, M3.5 x 45
24	CPS1418V/24	Bolt, M6
25	CPS1418V/25	Screw, M3 x 16
26	CPS1418V/26	Cap Screw, M6 x 12 x 1
26A	CPS1418V/26A	Cap Screw, M6 x 8 x 1.1
27	CPS1418V/27	Inner Blade Clamp
28	CPS1418V/28	Outer Blade Clamp
28A	CPS1418V/GA	Lock Ring
30	CPS1418V/30	Spring Washer, M6
31	CPS1418V/31	E-Ring
32	CPS1418V/32	C-Ring
33	CPS1418V/33	Blade, 5½"
35	CPS1418V/SA	Switch
36	CPS1418V/SA	Wire Connector
37	CPS1418V/SA	Wire (Black)
38	CPS1418V/SA	Wire (Red)
38A	CPS1418V/38A	Dust Filter
39	CPS1418V/39	Leaf Spring
40	CPS1418V/40	Tube, Extraction

Item	Part No.	Description
41	CPS1418V/41	Internal Ring
42	CPS1418V/SA	Battery Connection Plate
43	CPS1418V/SA	Battery Terminal Bracket
44	CPS1418V/44	Spindle Lock Pin
45	CPS1418V/45	Knife Lock Plate
46	CPS1418V/46	Riving Knife
48	CPS1418V/48	Guide Plate
49	CPS1418V/49	Clamp Plate
50	CPS1418V/50	Cutting Depth Adjustment Plate
51	CPS1418V/51	Clamp Shaft
52	CPS1418V/52	Knob Insert
53	CPS1418V/GA	Spindle
54	CPS1418V/GA	Circular Internal Ring
55	CPS1418V/55	Riving Knife Support Stand
56	CPS1418V/56	Upper Housing
57	CPS1418V/57	Lower Housing
58	CPS1418V/58	Guard
59	CPS1418V/59	Movable Guard (1)
60	CPS1418V/60	Movable Guard (2)
61	CPS1418V/61	Motor Bracket

Item	Part No.	Description
62	CPS1418V/62	Push Button, Blade Lock
63	CPS1418V/63	Tube Connection
64	CPS1418V/64	Indicator
65	CPS1418V/65	Base Stand Knob
66	CPS1418V/GA	Gear Box Holder
67	CPS1418V/GA	Gear Box Body
68	CPS1418V/GA	Gear Box Motor Bracket
69	CPS1418V/69	Rubber Handle
70	CPS1418V/70	Ruler
71	CPS1418V/71	Ruler Bracket
-	CB18/99	Battery (not shown)
-	CP9918VHK/32	Battery Charger (not shown)
-	CPS1418V/BKA	Base Standard Knob Assembly
-	CPS1418V/BPA	Base Plate Assembly
-	CPS1418V/GA	Gearbox Assembly
-	CPS1418V/GTA	Guard and Tube Extraction Assembly
-	CPS1418V/MA	Motor Assembly
-	CPS1418V/R	Ruler Assembly
-	CPS1418V/SA	Switch Assembly