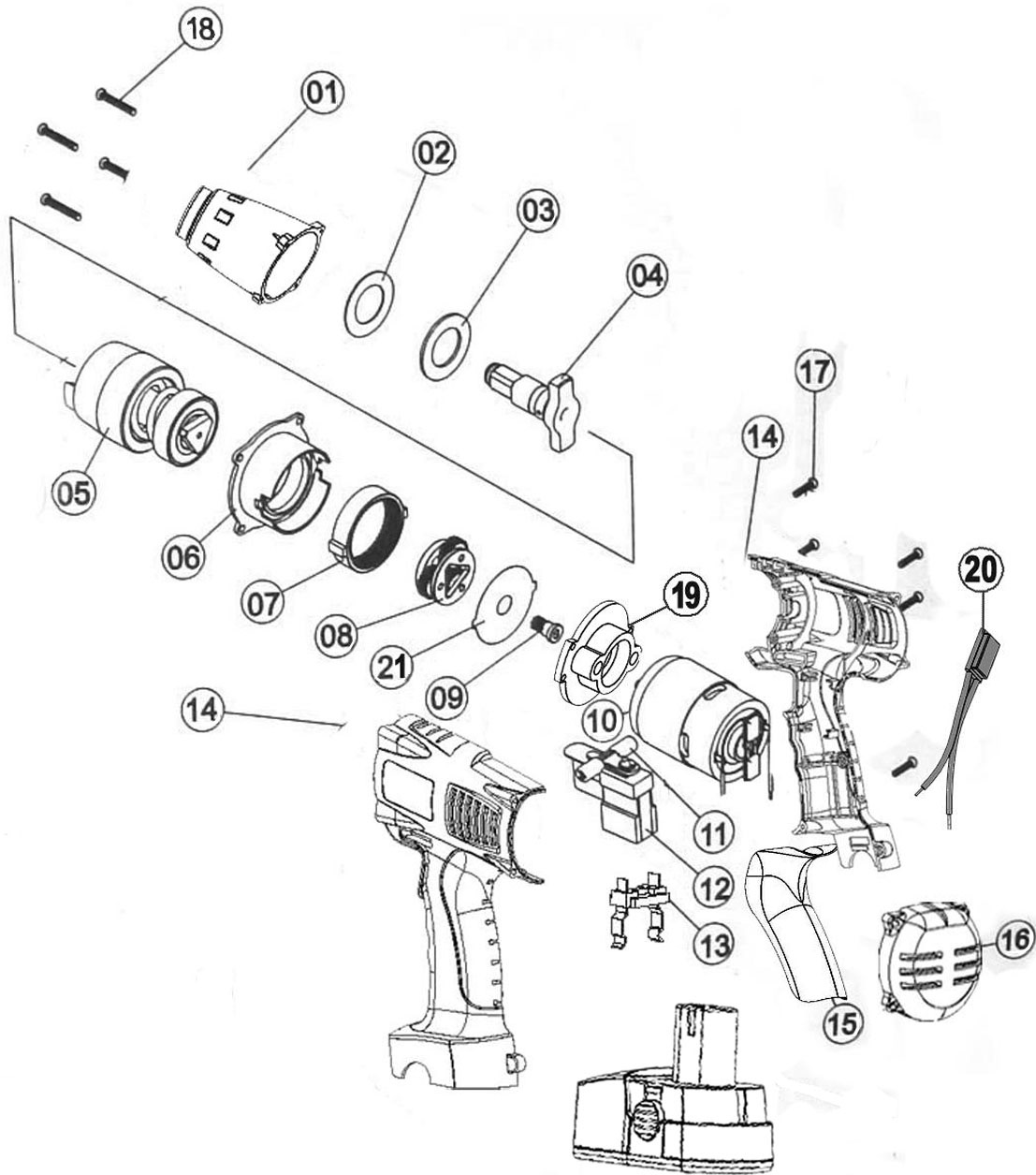




Parts Information:
Cordless Lithium-ion Impact Wrench 18V
1/2" Sq Drive 300lb.ft
Model No: CP5001



Item	Part No.	Description
1	CP5001.01	FRONT CASING
2	CP5001.02	BEARING
3	CP5001.03	GASKET
4	CP5001.04	FRONT IMPACT ASS'Y
5	CP5001.05	REAR IMPACT BLOCK
6	CP5001.06	GEARBOX
7	CP5001.07	GEAR RING
8	CP5001.08	PLANETARY GEAR SET (3PCS)
9, 10	CP5001.10A	MOTOR (c/w PINION)

Item	Part No.	Description
11, 12	CP5001.12A	SWITCH ASS'Y
13	CP5001.13	BATTERY CONNECTION ASS'Y
14, 15, 16	CP5001.14A	COMPLETE CASING
17	CP5001.17	SELF-TAPPING SCREW 3.5x18mm(6X5/8)BLK
18	CP5001.18	SCREW FOR FRONT COVER
19	CP5001.19	MOTOR COVER
20	CP5001.20	THERMAL SWITCH
21	CP5001.21	WASHER

NOTE: It is our policy to continually improve products and as such we reserve the right to alter data, specifications and component parts without prior notice.

IMPORTANT: No liability is accepted for incorrect use of product.

WARRANTY: Guarantee is 12 months from purchase date, proof of which will be required for any claim.

Sealey Group, Kempson Way, Suffolk Business Park, Bury St Edmunds, Suffolk. IP32 7AR



01284 757500



01284 703534



sales@sealey.co.uk



www.sealey.co.uk