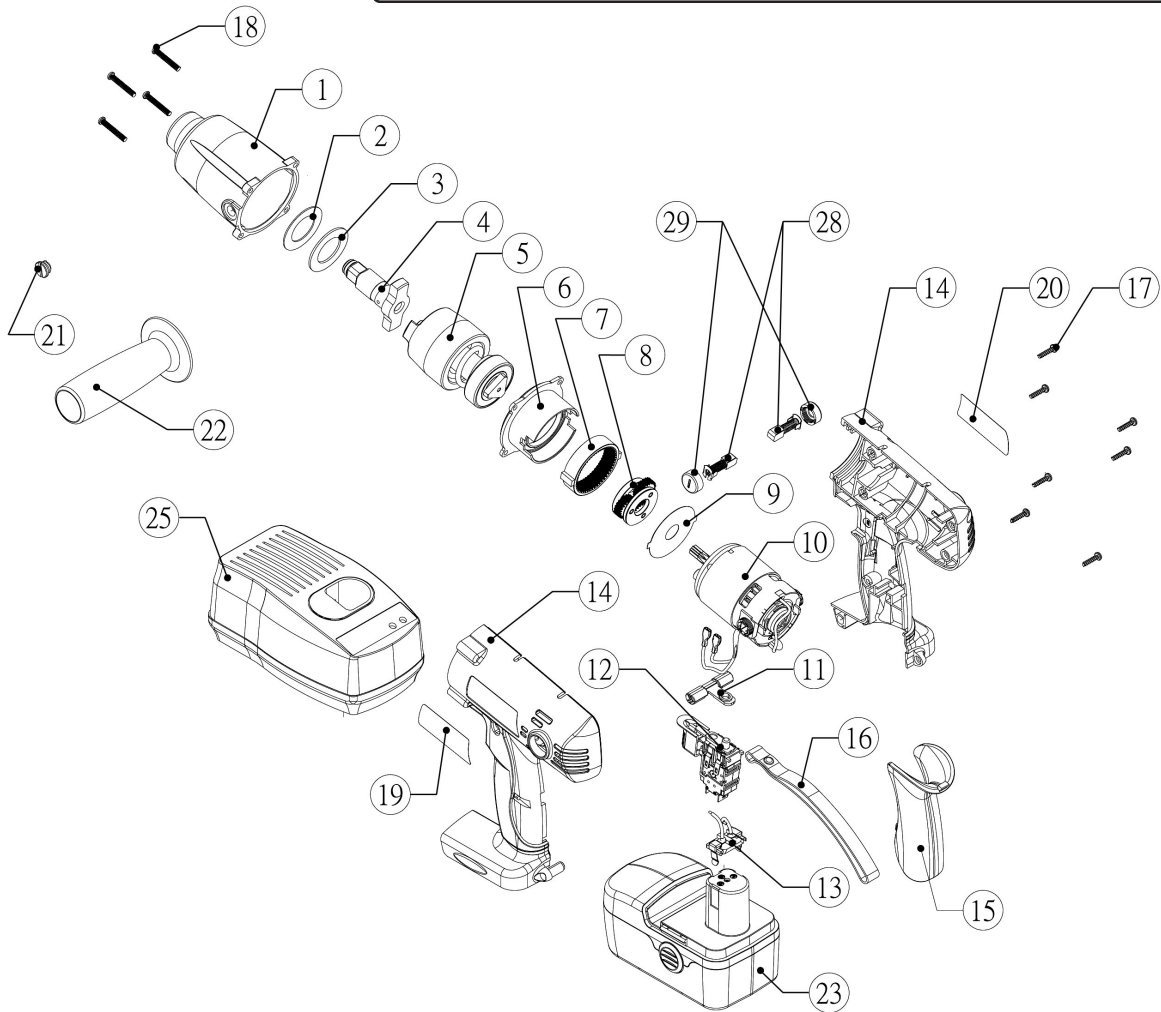




Parts Information:  
**Cordless Impact Wrench 19.2V 1/2" Sq Drive  
 300lb.ft  
 Model No: CP3003.V2**



Item	Part No.	Description
1	CP3001.V2-01	FRONT COVER ASSY
2	CP3001.V2-02	RUBBER WASHER
3	CP3001.V2-03	WASHER A
4	CP3001.V2-04	FRONT IMPACT ASSY
--	SA2/17	O-RING (16017) (NOT SHOWN)
--	SA3S/18	ANVIL COLLAR 1/2" x 2.0mm (NOT SHOWN)
5	CP3001.V2-05	REAR IMPACT ASSY
6	CP3001.V2-06	GEAR RING HOLDER
7	CP3001.V2-07	GEAR RING
8	CP3001.V2-08	PLANETARY GEARS
9	CP3003.09	WASHER
10	CP3003.10	MOTOR ASS'Y
11	CP3003.V2-11	FORWARD/REVERSE ROD
12	CP3003.V2-12	SWITCH
13	CP3001.V2-13	BATTERY CONNECTOR ASS'Y
14	CP3003.V2-14	MAIN HOUSING (L+R)

Item	Part No.	Description
15	CP3001.V2-15	SOFT GRIP
16	CP3001.V2-16	BELT 190x11x1.5
17	CP3001.V2-17	RD HEAD S/T SCREW M3.4 X 15 BLACK
18	CP3001.V2-18	FRONT COVER SCREW
19	CP3003.V2-19	LABEL FOR LEFT SIDE CASING
20	CP3003.V2-20	LABEL FOR RIGHT SIDE CASING
21	CP3001.V2-22	SCREW
22	CP3001.V2-23	SIDE HANDLE
23	CP3003BP	CORDLESS POWER TOOL BATTERY 19.2V-CP3001
--	CP-BUTTON	BUTTON & CLIP (NOT SHOWN)
25	CP3003CP	MAINS CHARGER FOR CP3003
--	CP3003CP-T	TRANSFORMER (NOT SHOWN)
28	CP3003.28	CARBON BRUSHES (SINGLE)
29	CP3003.29	CARBON BRUSH COVER
--	CP3001/C-IV	IN-VEHICLE CHARGER for CP3001 & CP3003 (NOT SHOWN)

**NOTE:** It is our policy to continually improve products and as such we reserve the right to alter data, specifications and component parts without prior notice.  
**IMPORTANT:** No liability is accepted for incorrect use of product.  
**WARRANTY:** Guarantee is 12 months from purchase date, proof of which will be required for any claim.

**Sealey Group**, Kempson Way, Suffolk Business Park, Bury St Edmunds, Suffolk. IP32 7AR

01284 757500 | 01284 703534 | sales@sealey.co.uk | www.sealey.co.uk