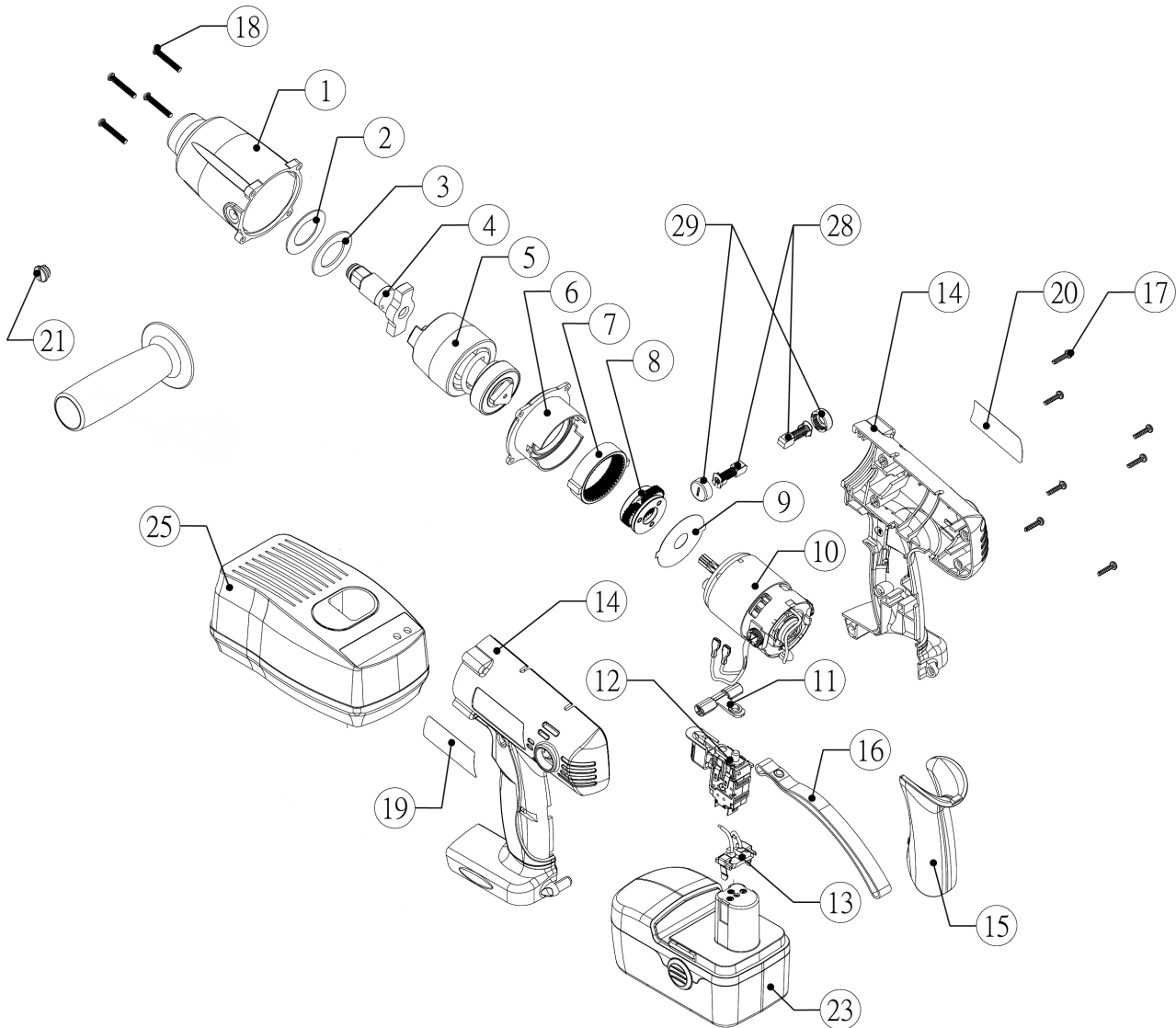




Parts Information:
**Cordless Impact Wrench 19.2V Super
 Torque 300lb.ft
 Model No: CP3003**



Item	Part No.	Description
1	CP3001.V2-01	Front Cover Assy
2	CP3001.V2-02	Rubber Washer
3	CP3001.V2-03	Washer
4	CP3001.V2-04	Front Impact Assy
5	CP3001.V2-05	Rear Impact Assy
6	CP3001.V2-06	Gear Ring Holder
7	CP3001.V2-07	Gear Ring
8	CP3001.V2-08	Planetary Gears
9	CP3003.09	Washer
10	CP3003.10	Motor Ass'y (Internal)
11	CP3003.11	Forward/Reverse Rod
--	CP3001.V2-11	Forward Reverse Rod (NOT SHOWN)
12	CP3001.V2-12	Switch
13	CP3001.V2-13	Battery Connector Ass'y

Item	Part No.	Description
14	CP3003.14	Main Housing (L+R)
15	CP3001.V2-15	Soft Grip
16	CP3001.V2-16	Belt 190x11x1.5
17	CP3001.V2-17	RD Head S/T Screw M3.4 x 15 Black
18	CP3001.V2-18	Front Cover Screw
19	CP3003.19	Label For Left Side Casing
20	CP3003.20	Label For Right Side Casing
21	CP3001.V2-22	Screw
23	CP3003BP	Cordless Power Tool Battery 19.2V
25	CP3003CP	Mains Charger
28	CP3003.28	Carbon Brushes (Single)
29	CP3003.29	Carbon Brush Cover
--	CP3001/C-IV	In-Vehicle Charger (NOT SHOWN)

NOTE: It is our policy to continually improve products and as such we reserve the right to alter data, specifications and component parts without prior notice.

IMPORTANT: No liability is accepted for incorrect use of product.

WARRANTY: Guarantee is 12 months from purchase date, proof of which will be required for any claim.

Sealey Group, Kempson Way, Suffolk Business Park, Bury St Edmunds, Suffolk. IP32 7AR



01284 757500



01284 703534



sales@sealey.co.uk



www.sealey.co.uk