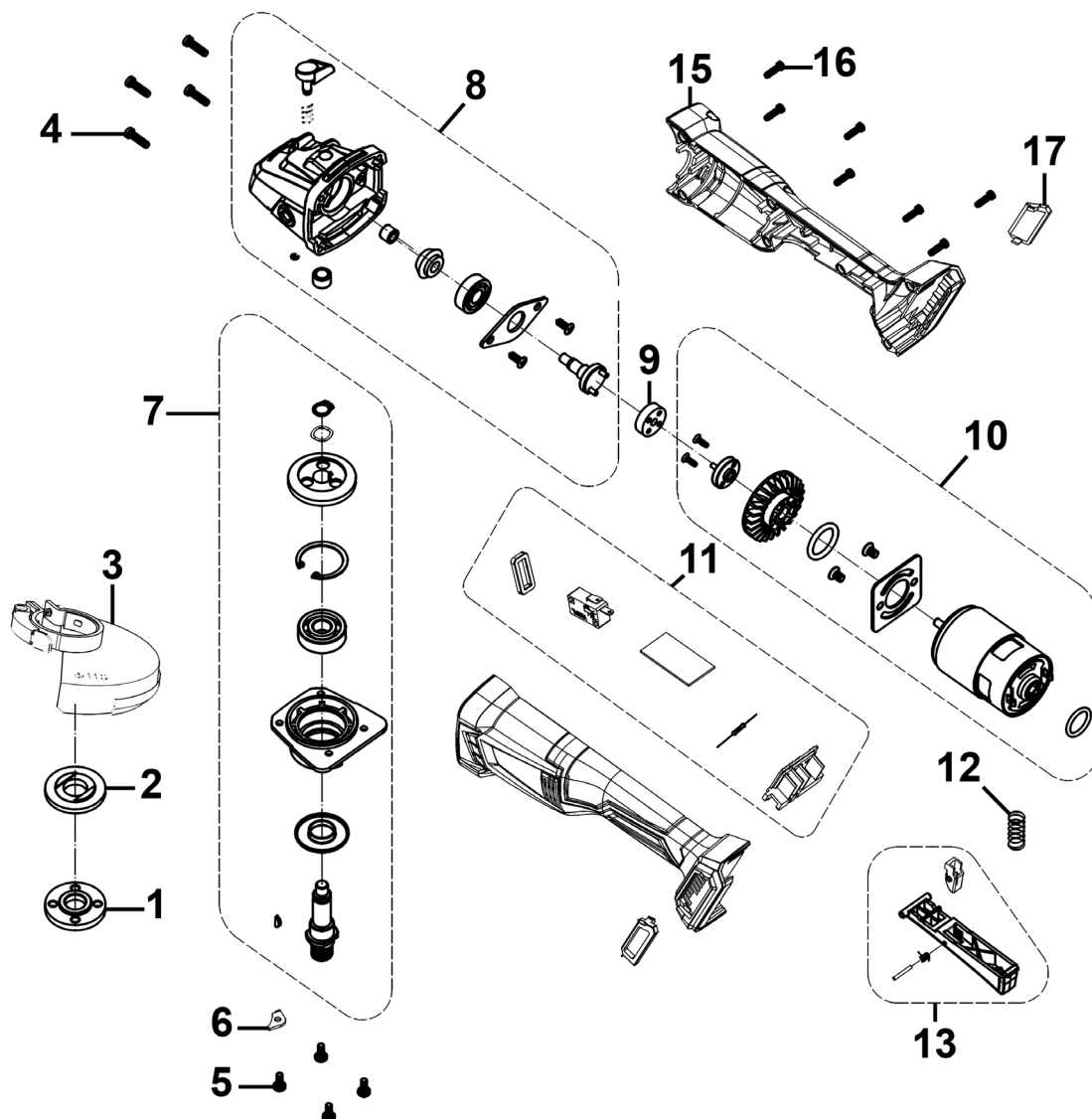


Parts Information: SV20 Series 115mm Cordless Angle Grinder 20V - Body Only Model No: CP20VAGB.V2



Item	Part No.	Description
1	CP20VAGB-V2-01	Outer Flange Nut
2	CP20VAGB-V2-02	Inner Flange Nut
3	CP20VAGB-V2-03	Wheel Guard
4	CP20VAGB-V2-04	Pan Head Tapping Screw
5	CP20VAGB-V2-05	Screw for Gear Cover Cover
6	CP20VAGB-V2-06	Stopper
7	CP20VAGB-V2-07	Gearcase Cover Assembly
8	CP20VAGB-V2-08	Gearcase Assembly

Item	Part No.	Description
9	CP20VAGB-V2-09	Rubber Connector
10	CP20VAGB-V2-10	Motor Assembly
11	CP20VAGB-V2-11	PCB/Switch Assembly
12	CP20VAGB-V2-12	Switch Trigger Spring
13	CP20VAGB-V2-13	Switch Trigger Assembly
15	CP20VAGB-V2-15	Housing Complete
16	CP20VAGB-V2-16	Pan Head Tapping Screw
17	CP20VAGB-V2-17	Dustproof Cover Left/Right

NOTE: It is our policy to continually improve products and as such we reserve the right to alter data, specifications and component parts without prior notice. There may be alternative versions of this product, please contact us should you require this information.

IMPORTANT: No liability is accepted for incorrect use of product. Spare parts must be fitted by a competent person

WARRANTY: Guarantee is 12 months from purchase date, proof of which will be required for any claim.